

cimtas

MODULE
AND
SHIPYARD

ENGINEERING



FABRICATION



MODULARIZATION

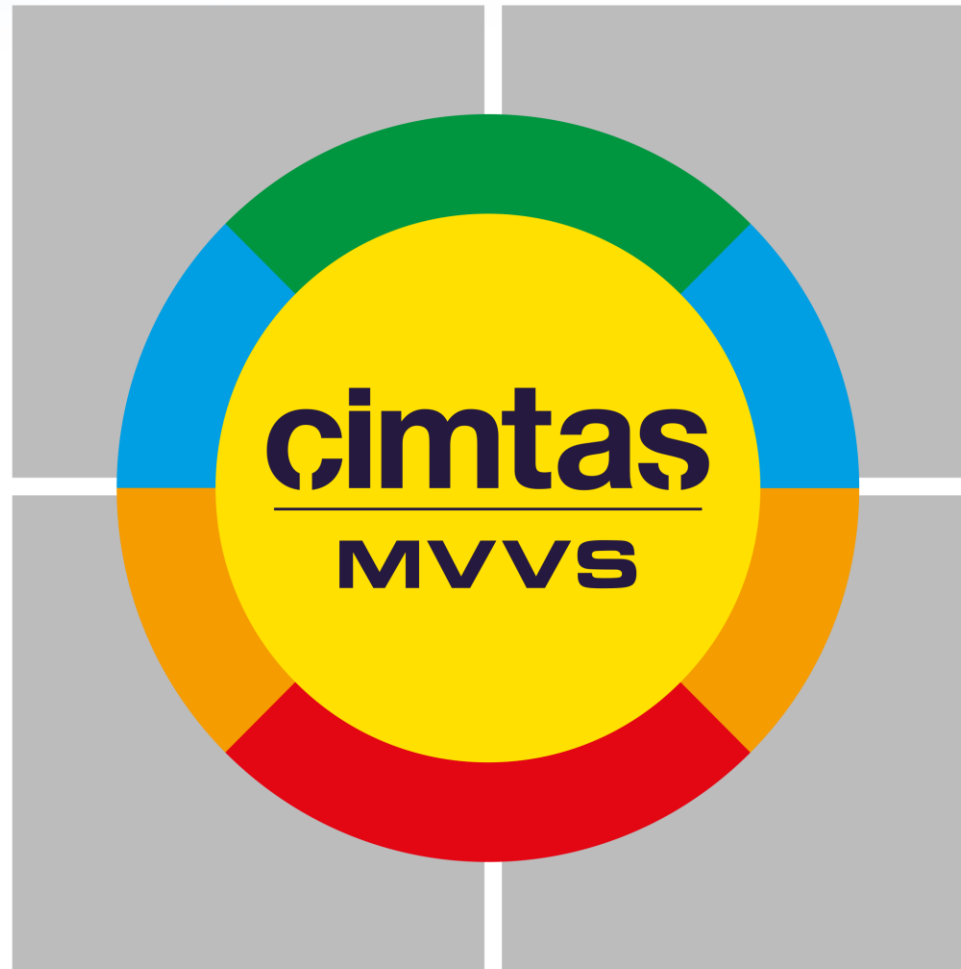


SHIPBUILDING



COMPANY PRESENTATION

CORPORATE ALIGNMENT LOGO



ZERO ACCIDENT

CORPORATE MVV

our mission

To **deliver** high **quality** engineering, procurement, welded fabrication, assembly and installation services, **safely, on time** and at the **least total cost** of each customer.

our vision

To be the **best-in class** and **preferred** partner for the engineered and **integrated** solutions of the demanding construction projects.

our values

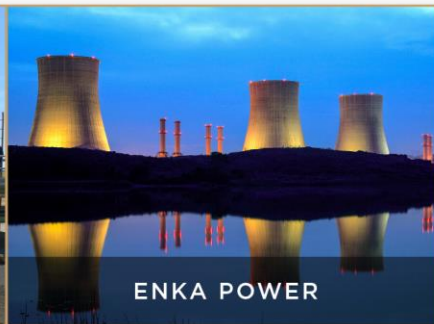
Safety, competency, development and leadership of our **employees**
Satisfaction of our **customers** through operational excellence and flexibility
Effective use of advanced **technology** and **information**
Identification and roll-out of **best practices** and **lessons learned**
Being **innovative** in everything we do and willingness to **change**
Being ethically, environmentally and socially **responsible**

ENKA

- Founded in 1957
- A group of companies composed of more than 50 subsidiaries operating in 6 major geographical areas: CIS, Asia, Middle East, Europe, Africa & Turkey
- 476 projects in 45 countries, with historical value of US\$ 41 billion
- Turnover \$6,6 B (2015)
- Amongst the top 100 international construction contractors of the World since 1982
- Ranked # 65 in ENR Top 250 International Contractors in 2015
- 21,500 people
- Traded publicly in Istanbul Stock Exchange, Market Cap \$10 B
- Holds ISO 9001, OHSAS 18001 & ISO 14001 and ASME certificates
- Shares the vision & goals of its customers, adopts to their needs and to local conditions

BUSINESS LINES:

- Engineering & Construction, Power, Real Estate, Trade



- A subsidiary of ENKA
- Incorporated in 1973 in Turkey as a local steel fabricator now an EPFI group of 5 companies:
 - Gemlik, Turkey:
 - Cintas Steel, www.cintas.com
 - Cintas Pipe Fabrication and Trading Ltd. Co., www.cimtaspipe.com
 - Cintas Precision Machining Industries and Trading Ltd. Co. www.cimtas machining.com
 - Kocaeli, Turkey:
 - Cintas Module and Shipyard, www.cimtasshipyard.com
 - Ningbo, China:
 - Cintas Ningbo Steel Processing Co. Ltd., www.cimtasnbo.com
- 3,550 people including 300 engineers
- With Activities in
 - Engineering (structural, pressure vessels, piping, plant engineering)
 - Fabrication (7 fabrication shops including pipe/fitting production and machining shops, 6 in Turkey & 1 in China, over 210,000 tons/year total capacity)
 - Modularization (Pre-assembled racks, Pre-assembled units)
 - Installation - Structural & Mechanical & Electrical (domestic and overseas jobsites)
 - Shipbuilding (powerships, barges, tankers / gas carriers)

CIMTAS MODULE & SHIPYARD



LOCATION

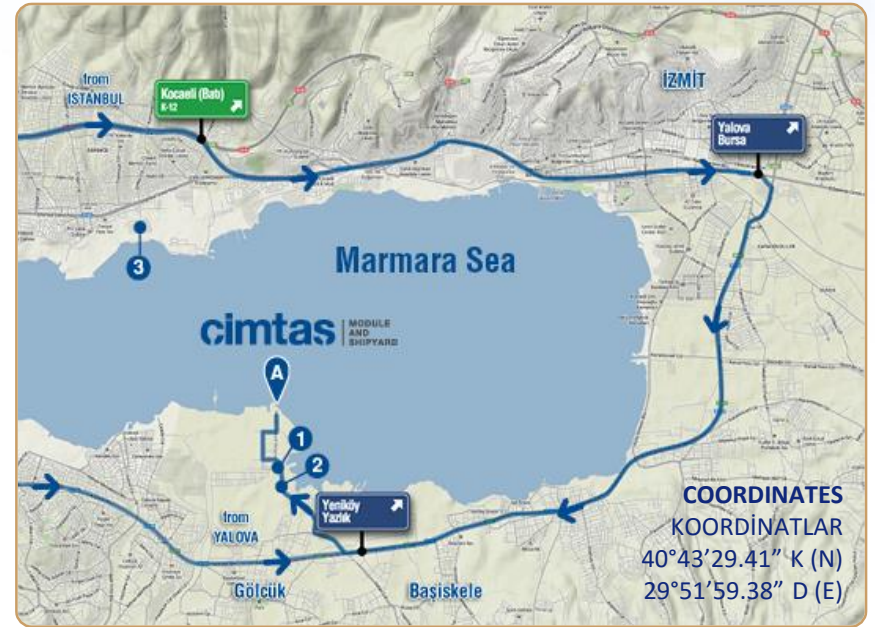


Motorway Access

- — 1.5 hrs /120 km from Istanbul
- — 1.5 hrs /100 km from Gemlik
- — 30 min / 59 km from Yalova

Fast Ferry from Istanbul

- — 75 min (European side – Yalova)
- — 45 min (Anatolian side – Yalova)



Proximity to 3 International Sea Ports

- 1 Autoport 0.5 km
- 2 Limaş 1.5 km
- 3 Derince 20 km

CIMTAS MODULE & SHIPYARD

- Founded in 2005 as Soli Shipyard in Kocaeli Free Trade Zone
- A subsidiary of ENKA
- A member of Cimtas Group
- Acquired by Cimtas Group in September, 2010
- Dedicated Services
 - Integrated Engineering (PDMS, Tekla, etc.)
 - Procurement
 - Pre-fabrication / Fabrication / Installation
 - Blasting, Painting
 - Shipbuilding / Modularization
 - Zero Accident Programme
(ref: OHSAS 18001:2007)
- Lean, Kaizen, 5S + 2S Programmes
- Annual Steel Fabrication Capacity: 35,000 tons



AT A GLANCE

- 208,500 sqm total fenced area with 240 m water front
- 42,850 sqm covered area (fabrication/paint, offices)
- 17,500 sqm covered area (steel fabrication shop)

Cranes:

- Main Gantry Crane with lifting capacity of 400 tons
- 27 nos Portal, 16 nos Overhead cranes and 1 no Jib Crane with various capacities (2 – 100 tons)

Outfitting Berth:

- 1 unit (85 x 56 m)

Slipways:

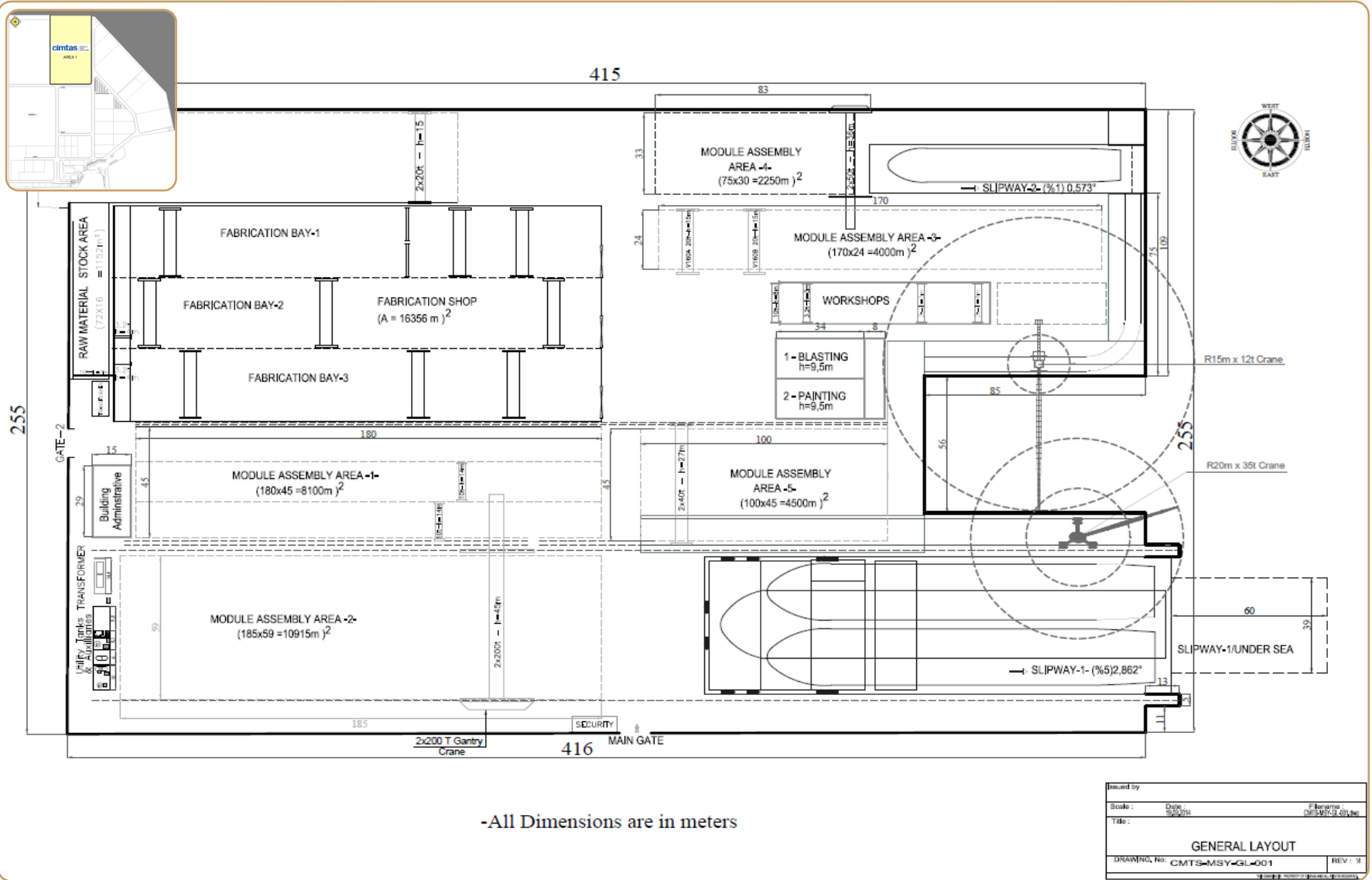
- 180 x 56 m with 400 t Gantry and 60,000 DWT capacity
- 106 x 20 m with 100 t Gantry and 10,000 DWT capacity



FACILITY / LOGISTICS



- 1 WATER FRONT: 240m
- 2 LOAD OUT BERTH: 85 m (L) x 56 m (W) (DRAFT: 6m)
- 3 ROLL-ON ROLL-OFF BARGE LOADING
- 4 QUAY: 109 m (W) (DRAFT: 7.3m)
- 5 SLIPWAY1: 180m (L) x 56 m(W) (%5 SLOPE, 60,000 DWT)
- 6 SLIPWAY2: 106m (L) x 20 m (W) (%1 SLOPE, 10,000 DWT)
- 7 2 x 200t GANTRY CRANE
- 8 2 x 50t GANTRY CRANE



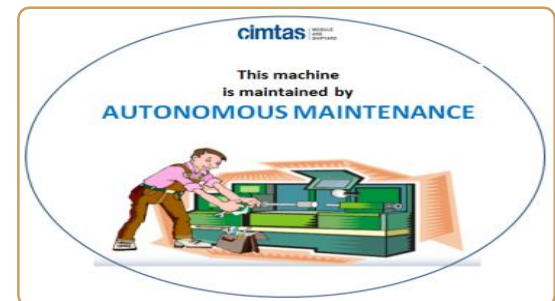
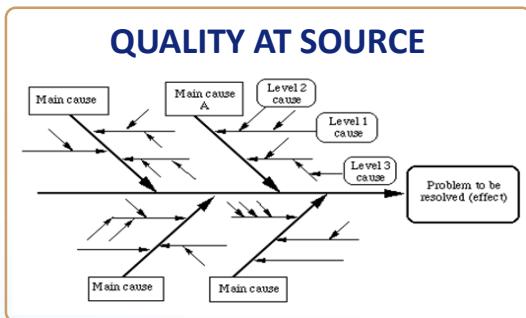
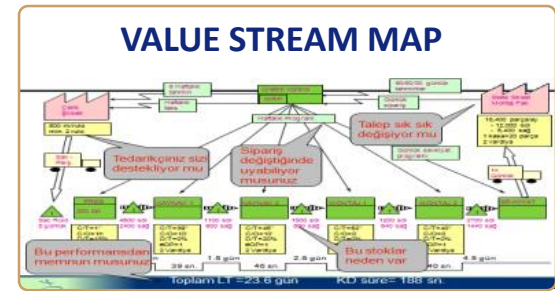
Issued by		
Scale:	Date:	Filename:
Title:	03/2015	CMS-MSY-GL-001
GENERAL LAYOUT		
DRAWING No:	CMS-MSY-GL-001	REV: 1



CIMTAS LEAN PRODUCTION APPROACH



LEAN TOOLS AT CIMTAS



BUSINESS LINES



STRUCTURAL STEEL



SHIPBUILDING

- Powerships
- Tankers
- Barges
- Gas carriers



MODULES

- Steel Bridge Modules
- Pre-Assembled Units
- Pre-Assembled Racks
- Process Skids



OFFSHORE STRUCTURES

- Platforms
- Tri/Monopiles
- Jackets



Muscat International Airport
Muscat, Oman

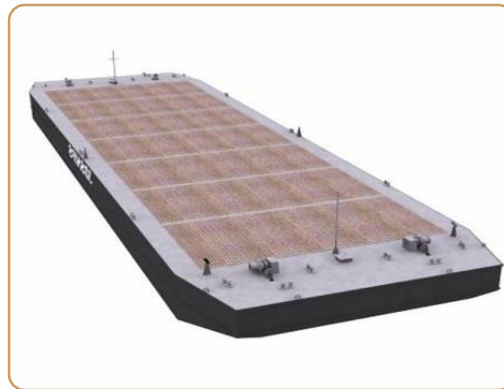


**Kuntsevo Multifunctional Business &
Trade Center**
Moscow, Russia

POWERSHIPS



BARGES



TANKERS / GAS CARRIERS



PRODUCTS

- Modules
- Pre-Assembled Process Units (PAUs)
- Pre-Assembled Racks (PARs)
- Process Skids

SCOPE

- Detail Design and Engineering
- Procurement and/or Prefabrication of;
 - Structural Steel, Cladding, Gratings, etc..
 - Piping Systems
 - Manual and Automated Valves
 - Electrical and Instrumentation
 - Engineered Equipment
 - Insulation and Heat Tracing
 - Pressure Vessels
- Assembly of;
 - Mechanical systems
 - E & I Systems
 - Tubing
 - Insulation and Heat Tracing
- Complete unit Testing ;
 - Flushing, Hydrostatic Testing
 - Functional Testing
 - Electrical Testing
- Trial Assembly (when necessary)
- Packaging and Delivery

6 Modules, 613 tons, Petrobrazi Plant
CCR Tower, Romania
UOP



Rominserv Storage Tanks Farm Revamping,
Romania, EMERSON-DANIEL



PSA and Burner Control Skid, Atyrau Refinery Reconstruction,
Kazakhstan, AXSIA HOWMAR

BRIDGE MODULES



Brief

1. Project Name : Golden Horn Project
2. Customer : IHI
3. Schedule : 16 months
4. Place of Fabrication : Cimtas Gemlik works
5. Scope of Work : Engineering, Procurement, Welded Fabrication, Assembly and Installation
6. Project Information (Quantity & Weight)
 - 184 blocks, 7,340 t, 74,000 steel elements

PARs / PAUs



Brief

1. Project Name : CCR Unit (six modules), 700 bbp
2. Customer : UOP
3. Schedule : 10 months
4. Place of Fabrication : Cimtas Gemlik works
5. Scope of Work : Engineering, Procurement, Welded Fabrication, Assembly and Installation
6. Project Information (Dimensions & Weight)
 - Overall : 63 m (L) x 12.5 m (W) x 6.5 m (H), 624 t
 - Individual : 25.5 m (L) x 6.5 m (W) x 6.5 m (H), 34 - 168 t/unit

MONOPILES



**FLOATING OFFSHORE
PLATFORMS**



JACKETS



JACK-UP PLATFORMS



DIFFERENTIATORS



SAFETY

- Zero Accident Programme
- Corporate HSE Programme
- OHSAS regulation
- Risk Analysis
- Lessons Learned
- 5S + 2S Programmes



RELIABILITY

- Preferred Partner
- Proprietary Privilege
- Business Ethics: Code of Conduct
- Consistency
- On Time Delivery
- Least Total Installed Cost



WORLD CLASS QUALITY

- High-tech Machinery
- Multi-Metallurgy Production
- Excellence in Services
- Proven Quality Assurance Systems
- Wide International Experience
- Skilled and Dynamic Personnel



EFFICIENCY

- One State-of-the-art facility
- Way Flow
- Lean Programme
- Kaizen Workshops
- Multiple Award Winner with Proven Flexibility
- Advanced Information Technology

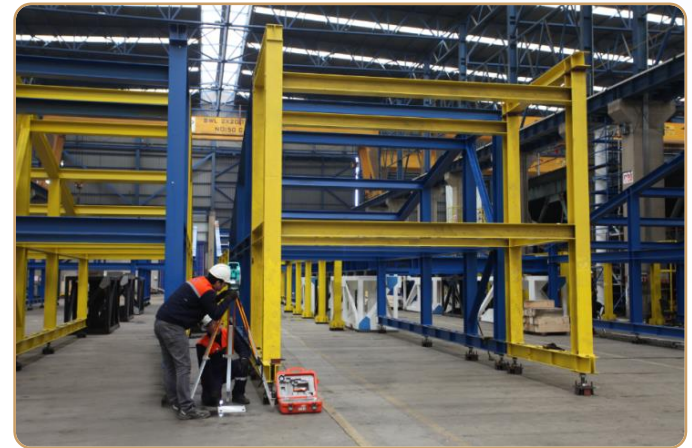
CENTER OF EXCELLENCE



- Bend Test
- Charpy Impact Test
- Hardness Test
- Macro and Micro Analysis
- Spectrometric Chemical Analysis
- Tensile Test (inc. elevated temperatures)
- Intergranular Corrosion Test
- WPQR Preparation
- Heat Treatment
Post Weld Heat Treatment, Stress Relief,
Normalization
- Welder Training (FCAW/GMAW – MIG/MAG,
SMAW – MMA, GTAW – TIG (WIG), SAW – UP,
Arc Stud Welding, Welder pre-training with
Welding Simulator



- Manuals: ISO (1) / OHSAS & HSE (1)
- Procedures: ISO (16), OHSAS (7), HSE (2)
- Instructions: ISO (393), OHSAS (43), HSE (4), QC (155)
- Personnel:
 - In-house UT Level II (2) , VT Level II (4), MT Level II (3), PT Level II (2) in accordance with EN 473 personnel
 - Welding Engineers (2), Welding Technicians (7), Welding Specialist (2), Welding Inspector (2)
 - QA Engineers (2), QA Technicians (2), QC Engineers (2), QC Technicians (8)
 - Certified Welders (98)
- Quality Portal – DCC:
 - On-line Electronic Documentation Flow
 - Full Traceability



SCOPE

- Plant Design Engineering
 - Power, Refineries, Petrochemical,
- Process Design
- Power and Process Piping
- OEM Piping
- Pressure Vessels
- Heat Exchanger
- Storage Tanks
- Marine Engineering
 - Basic Design
 - Detailed Design
- Civil & Structural Design
- Gas Processing Equipment
- BOP Equipment
- Technical Procurement
 - Valves, Instruments, Pipe Supports,
 - Process Equipment Packages
- Reverse Engineering-Laser Scanning

Cimtas Plant Design and Engineering Group provides various engineering and design services including conceptual, basic and detail engineering for the industries including but not limited to power, oil and gas, chemical, offshore and refinery.

ENGINEERING SOFTWARE

3D Design & Modeling

PDMS/Aveva

MDS/Aveva

PDMS LMI/Aveva

Smart Plant 3D & PID

PDS

Leica CloudWorx

SPR (review)

Tekla Structures

Solidworks

Autocad

Catia v5

Stress & Structural Analysis

Rohr2

Caesar II

Compress

Ansys

PVElite

Abaqus

ETABS

SAP 2000

STAAD Pro

I & C – Electrical

ETAP

Dialux

ePlan

Process & Flow Analysis

ChemCad

Flow Consultant

Sinetz

Thermoflow

Drafting

AutoCAD

Spoolgen

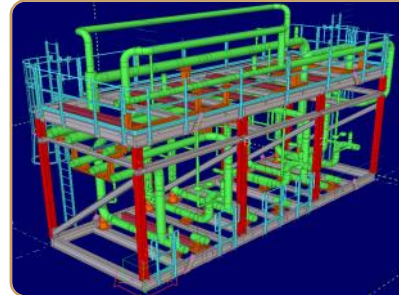
Isogen

Microstation

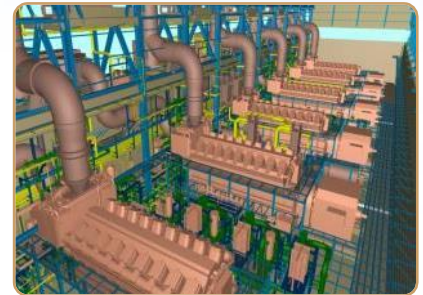
Smartsketch

ENGINEERING EXPERIENCE

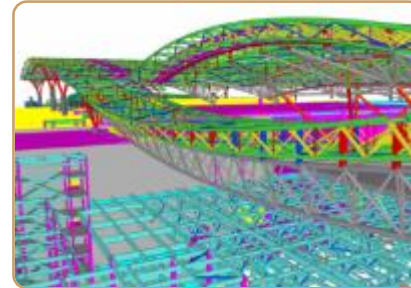
**3x42 MW SCGT Power Plant
West Qurna-2 Oilfield, Iraq
ENKA**



**Compressor Manifold Skid, SGP,
Kazakhstan, TCO**



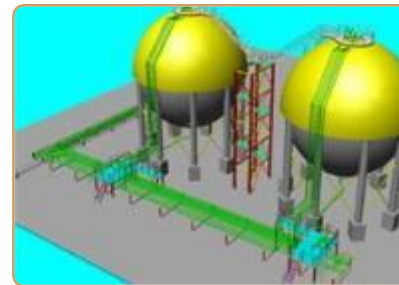
**111 MW KPS 6, Powership,
Turkey, KARADENIZ ENERGY**



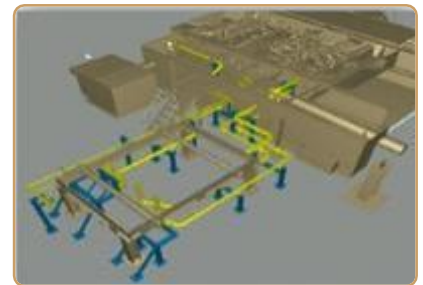
**Muscat Int.'l Airport Roof
Structure, Oman, ENKA**



**Pressure Vessels D107-D203,
Turkey, PETKIM**

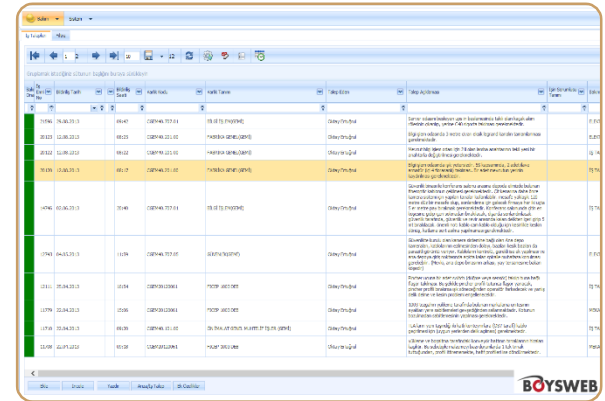
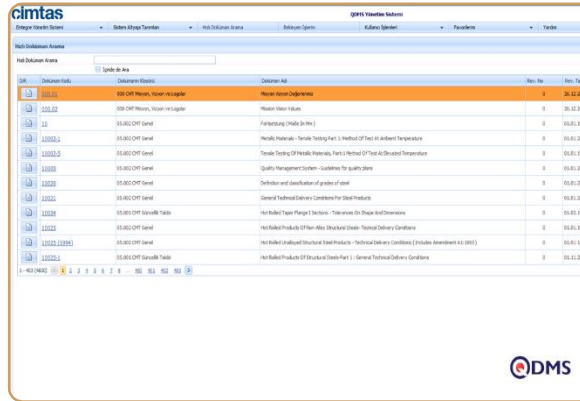
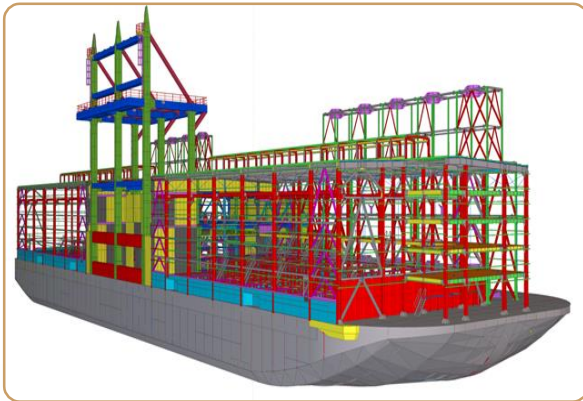
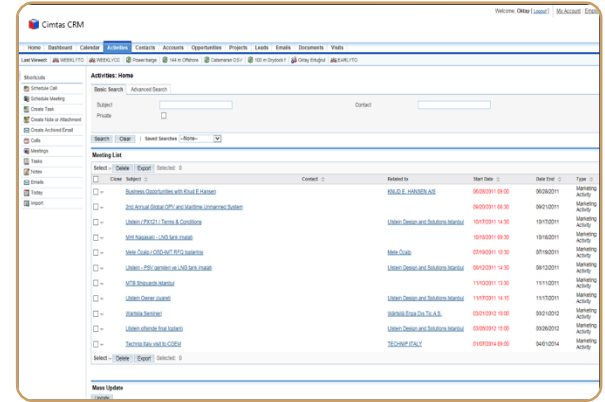
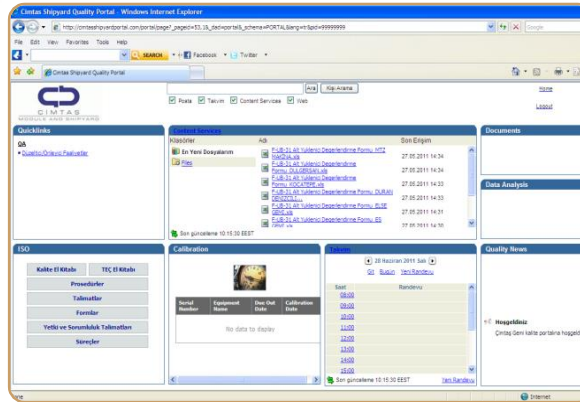
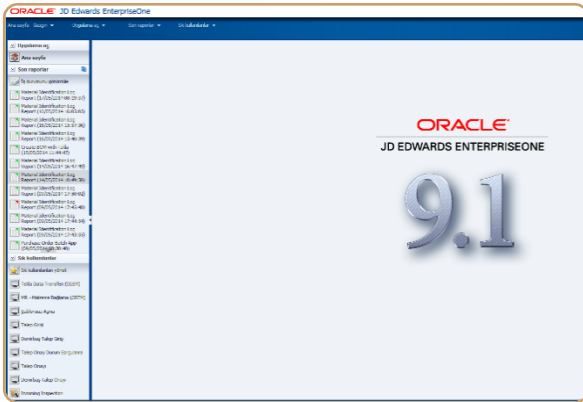


**Propylene Storage Tanks,
Turkey, PETKIM**



**Interconnecting Piping, DLN 1
Upgrade, China, GE**

INFORMATION TECHNOLOGY AND SHARING



Effective management of **interfaces, changes, revisions, material shorts and priorities**
(Oracle JD Edwards ERP, Oracle Collaboration Suite, CRM, QDMS, BOYS, 3D Design software)

CERTIFICATES



Management Service

ISO 9001:2008



Management Service

ISO 14001:2004



Management Service

OHSAS 18001:2007



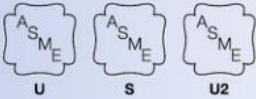
Industrie Service

EN 12952-5, EN 13480-4, EN 3834-2



Industrie Service

EN 1090-2

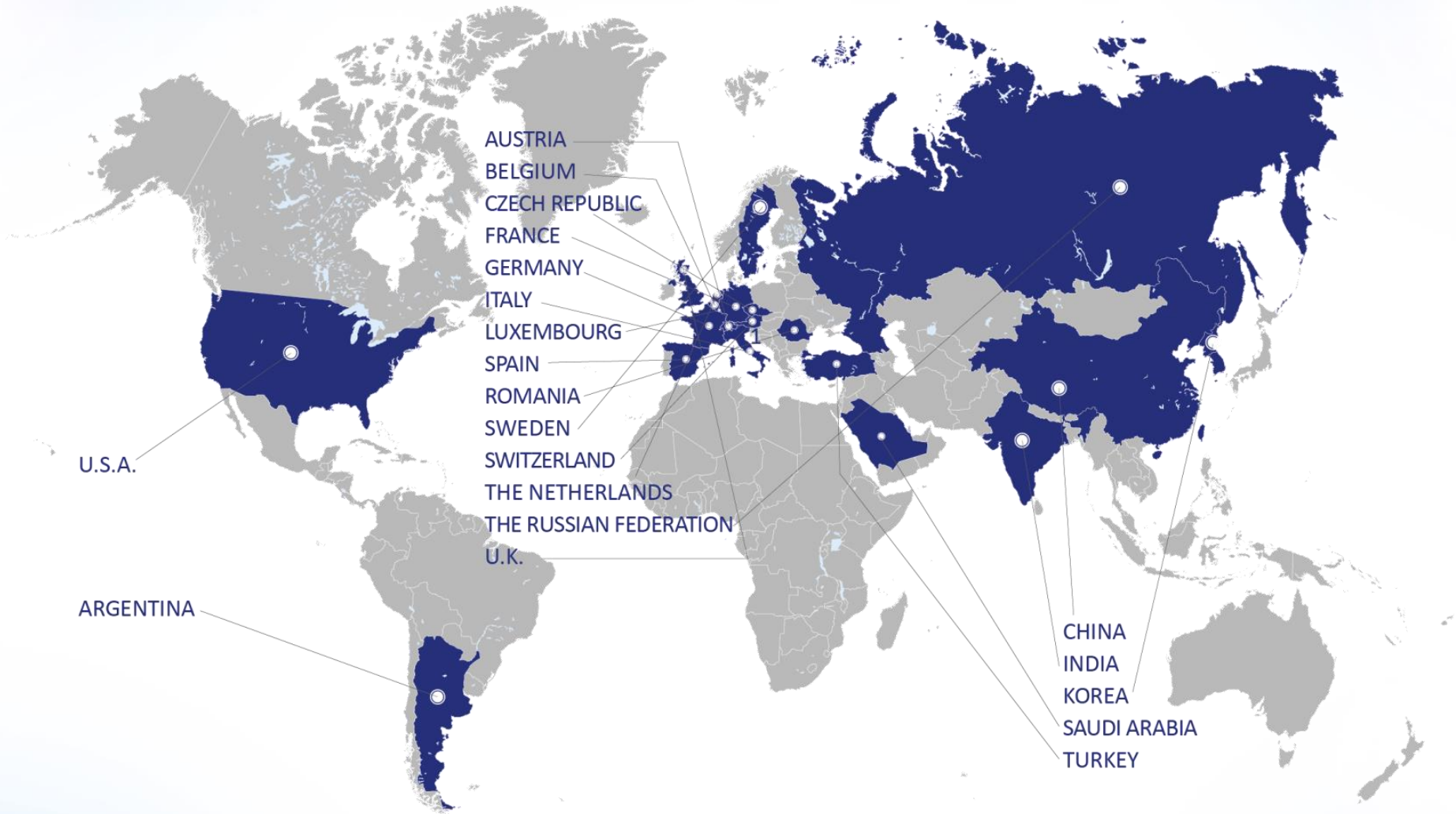


ASME 'S', 'U' and 'U2' stamps

National Secret Security Clearance

NATO Secret Security Clearance

GLOBAL SOURCING



Project No	Vessel Name	Flag	Delivery date	Vessel type	(DWT)
NB01	M/T LETIZIA EFFE	Malta	28.03.2008	Oil/Chemical Tanker IMO type II	20,000
NB02	M/T MALMO	Malta	20.08.2008	Oil/Chemical Tanker IMO type II	20,000
NB03	M/T MADEIRO	Malta	06.12.2008	Oil/Chemical Tanker IMO type II	20,000
NB04	L/S ANNE	Gibraltar	26.08.2008	Oil/Chemical Tanker IMO type II	5,850
NB05	L/S JAMIE	Gibraltar	05.03.2009	Oil/Chemical Tanker IMO type II	5,850
NB06	SOLEY-1	Malta	16.09.2009	Oil/Chemical Tanker IMO type II	20,000
NB07	SOLEY-2	Malta	16.09.2009	Oil/Chemical Tanker IMO type II	20,000
NB08	SOLEY-3	Malta	05.11.2010	Oil/Chemical Tanker IMO type II	7,000
NB09	SOLEY-4	Malta	15.02.2012	Oil/Chemical Tanker IMO type II	7,000
NB16	M/T CORAL-T	Malta	10.04.2015	Oil Tanker	4,680
NB17	GMK-1	Turkish	17.02.2014	Dynamic Positioning Service Vessel	4,200



Ship name	: GMK-1
Ship type	: Dynamic Positioning Service Vessel
Flag	: Turkish
Classification	: Bureau Veritas
Class notation	: Pontoon - Assisted Propulsion, Coastal Area, DP0
Designer / DWT	: Navtek / 4,200 t
LOA	: 92.9 m
Breadth	: 22 m
Depth	: 4.5 m
Draft (ballast)	: 1.29 m





**Muscat International Airport,
Muscat, Oman**

- Piers, bridges & bridge houses
- Steel stairs, lift shafts
- Roof trusses
- Columns & perlin
- Certification per EN 1090-2 Execution Class 3

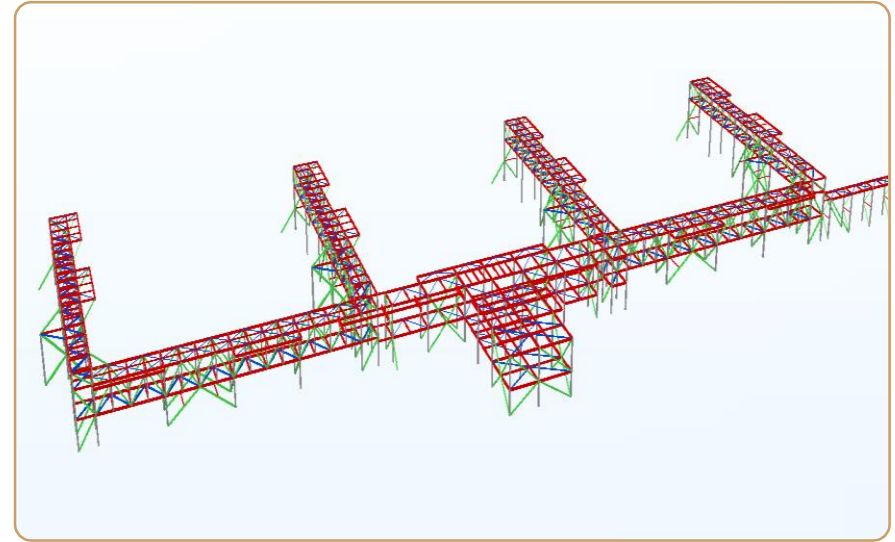
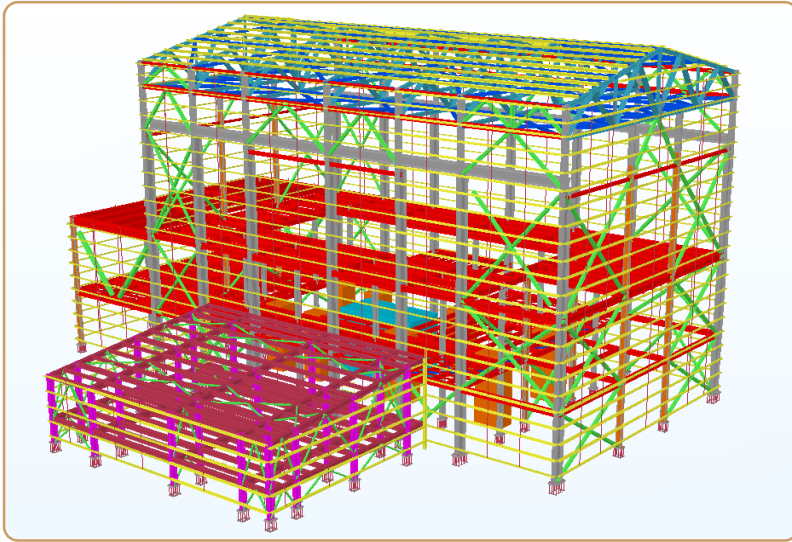
Status	Client
Delivered (Q3/2013)	BEJV



**Kuntsevo Multifunctional Busi. &
Trade Center, Moscow, Russia**

- Building Structural Steels
- Roof Trusses
- Certification per EN 1090-2 Execution Class 3

Status	Client
Delivered (Q3/2012)	ENKA



Erbil Combined Cycle Power Plant, Erbil, Iraq

- Steam Turbine Generator Building Structural Steel
- Pipe Rack Structural Steel
- Water Treatment Plant Structural Steel
- Condensate Pump Building Structural Steel

Status

Client

Delivered
(Q4/2013)

ENKA



Powerhip Conversion Project

- Project/Powerhip No: KPS6
- Power Output: 114 MW
- Power Block:
 - Combined Cycle:
 - 6 nos diesel engines c/w generators
 - 3 nos steam turbines
- Dimensions (L x W): 158 m x 28 m

Status	Client
Delivered (Q3/2011)	Karpowership



Powerbarge Conversion Project

- Project/Powerbarge No: KPS9
- Power Output: 172 MW
- Power Block:
 - Combined Cycle:
 - 9 nos diesel engines c/w generators
 - 1 nos steam turbines
- Dimensions (L x W): 135,8 m x 42 m

Status	Client
Delivered (Q2/2012)	Karpowership

GLOBAL SOURCING



IZMIT BAY CROSSING SUSPENSION BRIDGE

The 4th longest suspension bridge in the world

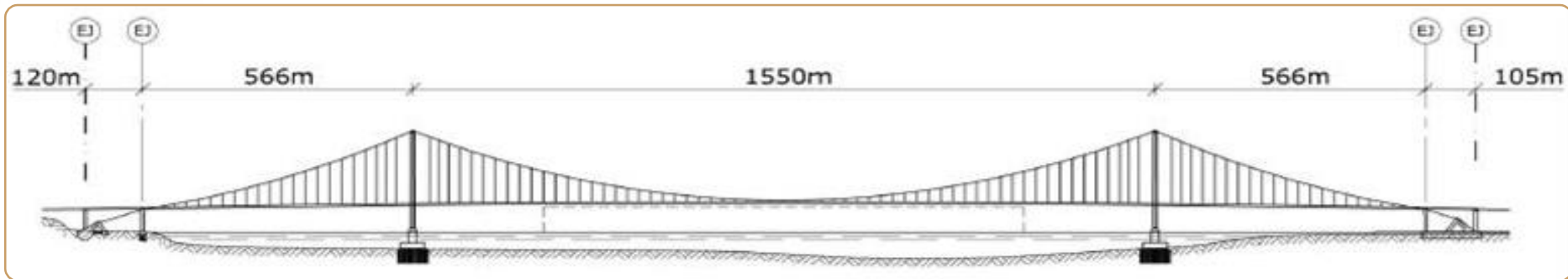
Owner	: Republic of Turkey
EPC Contractor	: NÖMAYG JV
Bridge Contractor	: IHI & ITOCHU
Bridge Fabricator	: Cimtas Gemlik Works
Ground Assembler	: Cimtas Module and Shipyard
Bridge length x height	: 2,682 m x 242 m
Main span	: 1,550 m
Bridge Total Steel Weight	: 52,000 tons



IZMIT BAY CROSSING SUSPENSION BRIDGE PROJECT

(MARMARA SEA - TURKEY)

GENERAL LAYOUT



- Total Length: **2,682 m** / Total Weight: **51,425 t**
- Main Span: **1,550 m**
- Tower Height: **246 m**
- Navigational Clearance: **64 x 1,000 m**
- **The longest** suspension bridge in **TURKEY**
- **The 4th** longest suspension bridge in the **WORLD**

Scope of Supply

- Ground Assembly of Girder Panels fabricated by Cintas Steel into Girder Blocks.
- 113 girder blocks in total
- Unit Weight: ~300 t, Total Weight: ~ 33,500 t
- Dimensions: ~ 36 m (L) x 25 m (W) x 4.75 m (H)

IZMIT BAY CROSSING SUSPENSION BRIDGE PROJECT

(MARMARA SEA - TURKEY)



A faint world map is visible in the background of the slide, rendered in a lighter shade of blue than the background itself.

cimtas | MODULE
AND
SHIPYARD

THANK YOU

www.cimtasshipyard.com