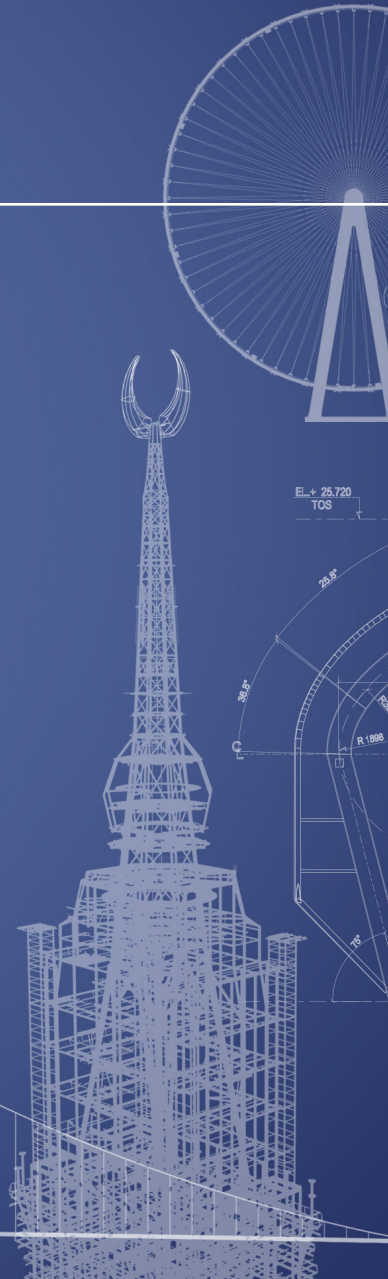
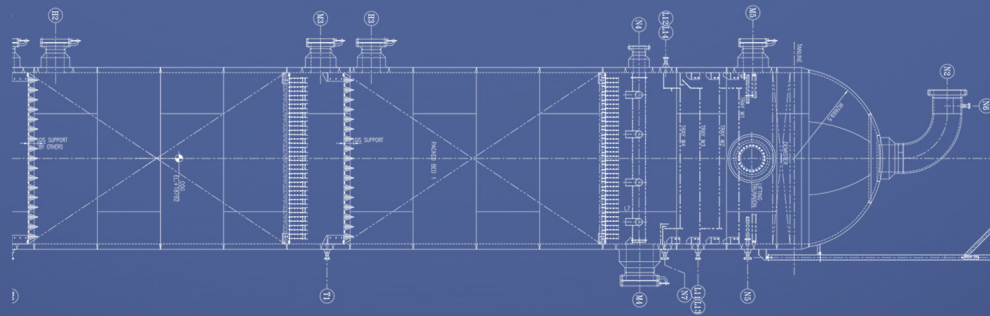
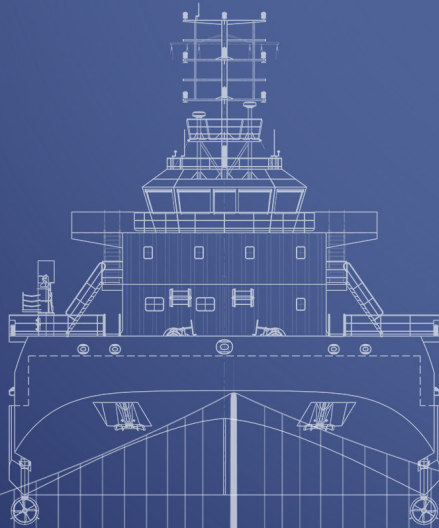


# cimtas

## COMPANY OVERVIEW 2 0 2 2



# WHO WE ARE



ÇİMTAŞ STEEL, being the flagship company of ÇİMTAŞ GROUP; provides engineering, welded fabrication, modularization and installation services to the leading customers of construction, power, oil, gas, chemicals and offshore industries.

A subsidiary of **ENKA**

## cimtas | steel



**80,000 t**  
Capacity



**1.3 M t**  
in Total



**500 M**  
USD Revenue



**2,000**  
Employees



**+100**  
Customers



**+100**  
Mega Projects



**Zero**  
Accident Policy



**49**  
Years of Experience

# ENKA

More than **550** Projects in **47** Countries  
More than **51 Billion USD** Historical Contract Value

**70<sup>th</sup>** @ ENR Top Contractors List - 2021  
More than **20,000** Employees



**OIL, GAS & PETROCHEMICALS**



**POWER PLANTS**



**INFRASTRUCTURE**

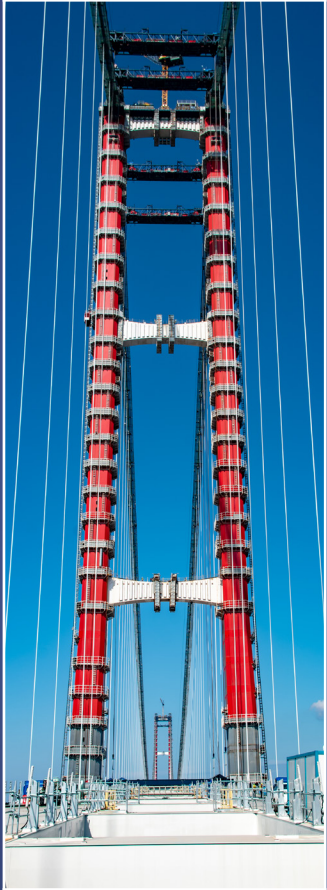


**BUILDING WORKS**

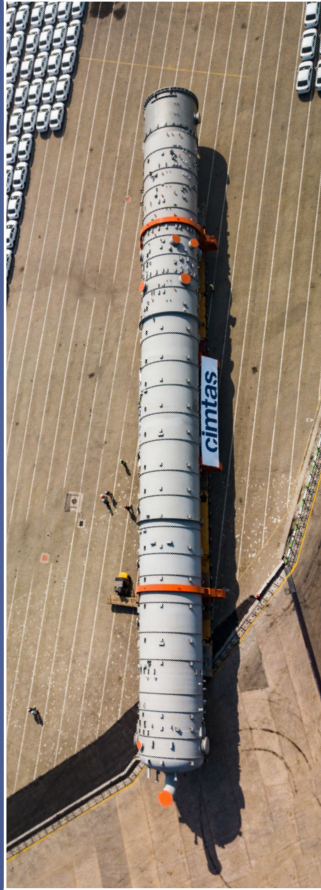
# WORLDWIDE PROJECTS



# BUSINESS LINES



**STRUCTURAL  
STEEL**



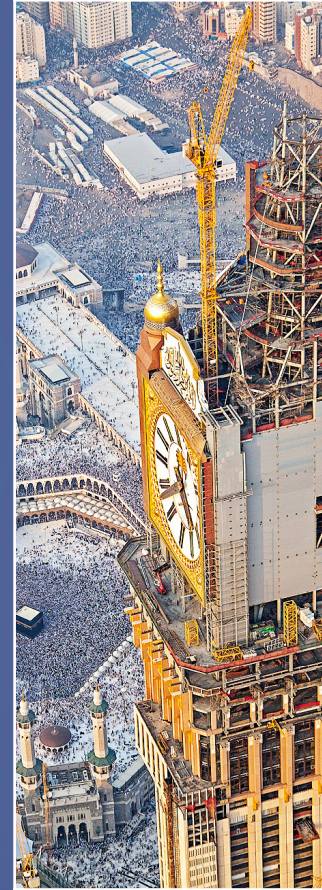
**PRESSURIZED  
EQUIPMENT**



**STEEL  
WIND TOWERS**



**OFFSHORE  
STRUCTURES**



**INSTALLATION**



**MODULARIZATION**

# STRUCTURAL STEEL

ENGINEERING  
INSTALLATION

FABRICATION  
TRANSPORTATION



MOSCOW NABEREZHNYAYA TOWER  270 m  13,000 t

*Russia*



**830,000 t**  
in Total



**25**  
Countries



**High Rises**



**Steel Bridges**



**Power, Oil & Gas  
Plants**



**Industrial  
Plants**



**Airports**



**Stadiums**



**BESMAYA CCPP**  
10,000 t

*Iraq*



**MUSCAT INTERNATIONAL AIRPORT**  
32,000 t

*Oman*



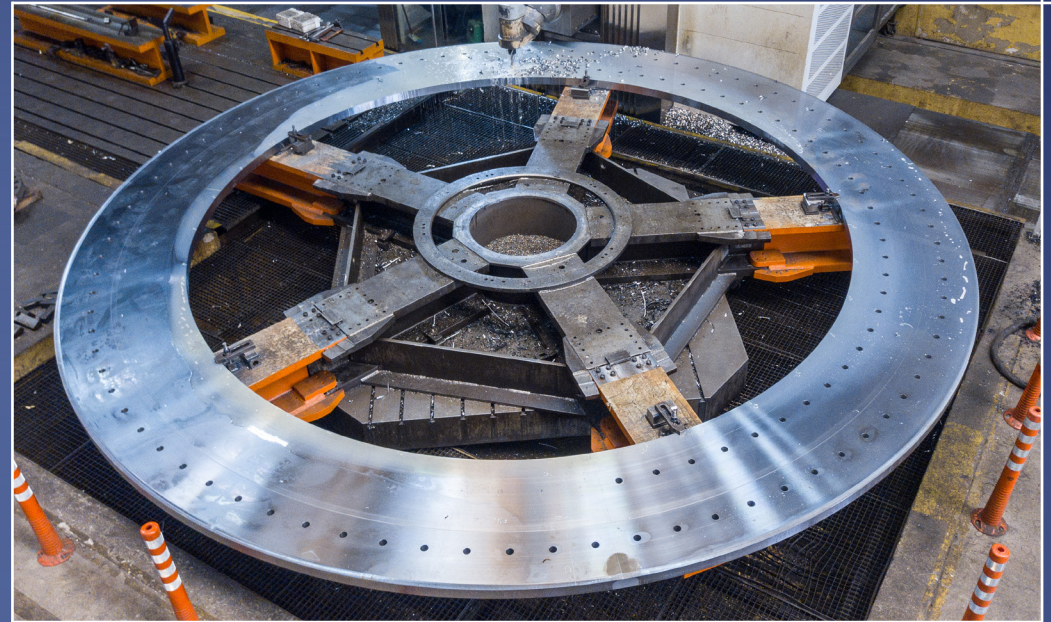
**DONBASS ARENA STADIUM**  
4,500 t

*Ukraine*



**KASHIRSKAYA TRADE CENTER**  
5,500 t

*Russia*



**BAKU** "The World's Tallest" FLAGPOLE  
 1,275 t    191 m

Azerbaijan



**ARCTIC LNG 2**  
 4,000 t    S690QL

Russia

# OSMANGAZI SUSPENSION BRIDGE

*The World's 5<sup>th</sup> Longest Suspension Bridge*

ENGINEERING  
TRIAL ASSEMBLY

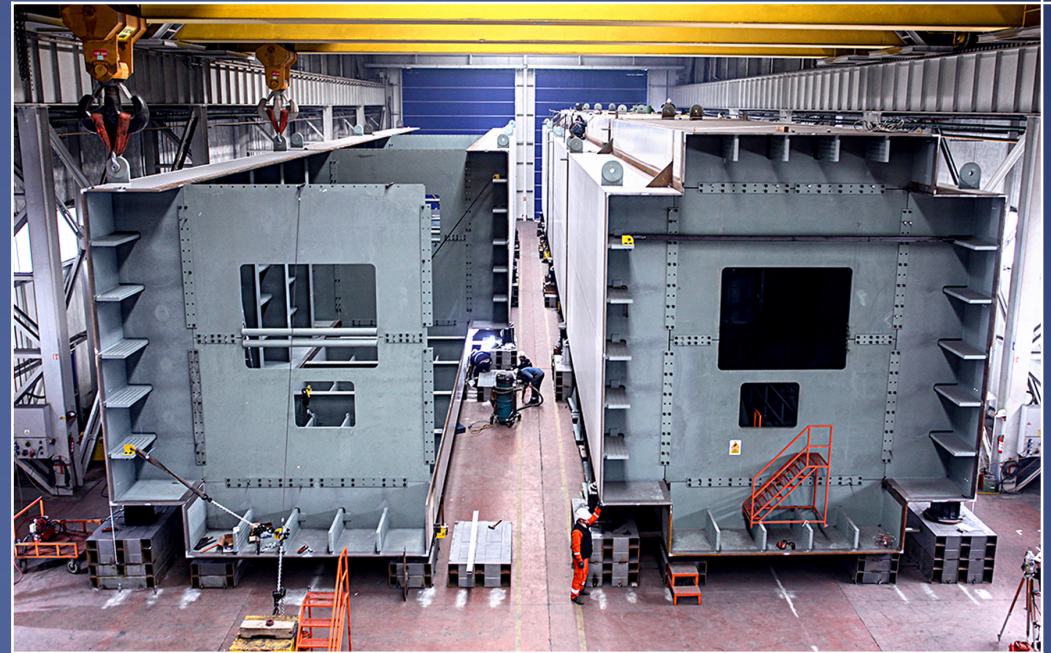
FABRICATION  
TRANSPORTATION

 52,000 t  1,550 m  2,682 m  252 m





**TOWER PANEL FABRICATION**



**TOWER BLOCK FORMATION**



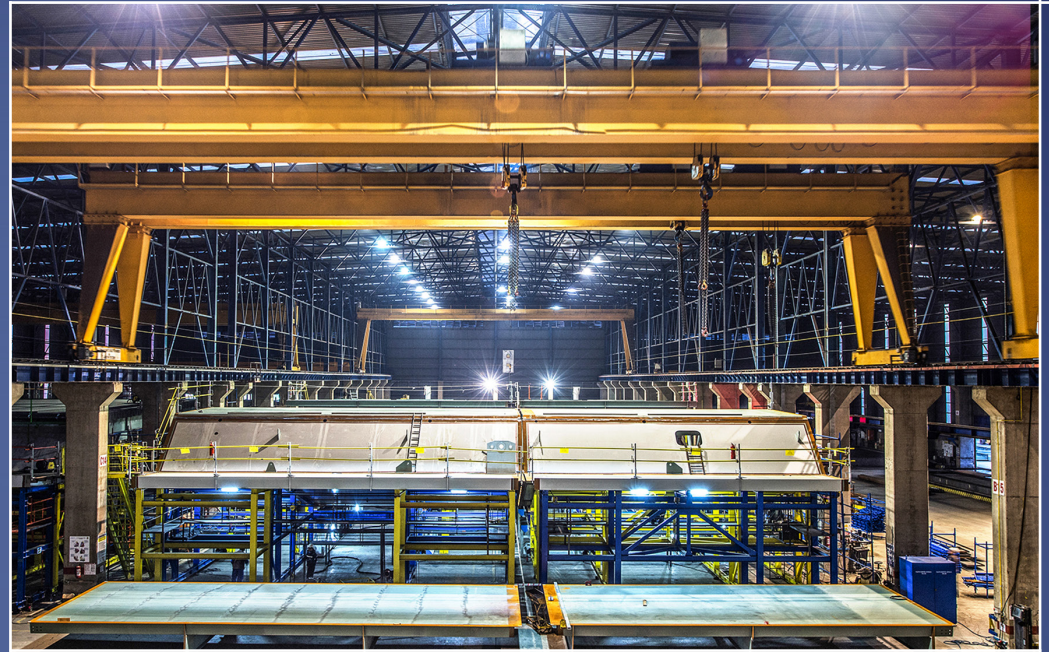
**TOWER BLOCK TRIAL ASSEMBLY**



**TOWER BLOCK TRANSPORTATION**



**GIRDER PANEL** FABRICATION



**GIRDER BLOCK** FORMATION



**GIRDER BLOCK** TRIAL ASSEMBLY



**GIRDER BLOCK** TRANSPORTATION

# 1915 ÇANAKKALE SUSPENSION BRIDGE

*The World's Longest Suspension Bridge*

ENGINEERING  
TRIAL ASSEMBLY

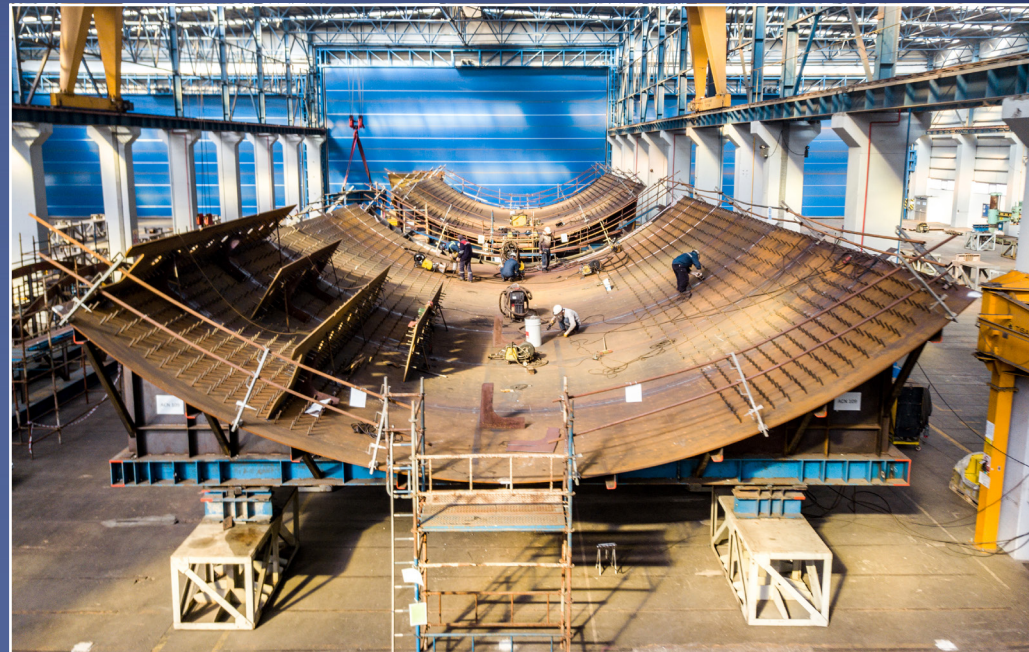
FABRICATION  
TRANSPORTATION

105,000 t 2,023 m 3,563 m 318 m





**SHAFT FABRICATION**



**SHAFT FABRICATION**



**ANCHOR FRAME FABRICATION**



**SHAFT TRANSPORTATION**



**TOWER PANEL FABRICATION**



**TOWER BLOCK FORMATION**



**TOWER BLOCK TRIAL ASSEMBLY**



**TOWER BLOCK TRANSPORTATION**



**GIRDER PANEL** FABRICATION



**GIRDER BLOCK** FORMATION



**GIRDER** TRIAL ASSEMBLY



**GIRDER BLOCK** TRANSPORTATION

# NEW YORK WHEEL

RIM SECTIONS

 4,000 t  183 m





# PRESSURIZED EQUIPMENT

MECHANICAL DESIGN  
CERTIFICATION

FABRICATION  
TRANSPORTATION



Columns - Drums - Autoclaves

Titanium Welding and Precision Machining

Heat Exchangers - Reactors

3,200 PQR - 6,500 WPS



**115,000 t**  
in Total



**1,060**  
Units in Total



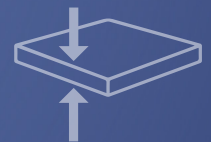
**1,500 t**



**10 m**



**100 m**



**250 mm**

**Ni-SS**

**Cr-Mo**







# STEEL WIND TOWERS

MASS PRODUCTION    FIELD SERVICES  
MECHANICAL & ELECTRICAL ASSEMBLY



**350,000 t**  
in Total



**1,250**  
Section/Year



**23** Countries



**8 m**



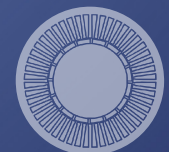
**45 m**  
Section



**400 t**  
Section

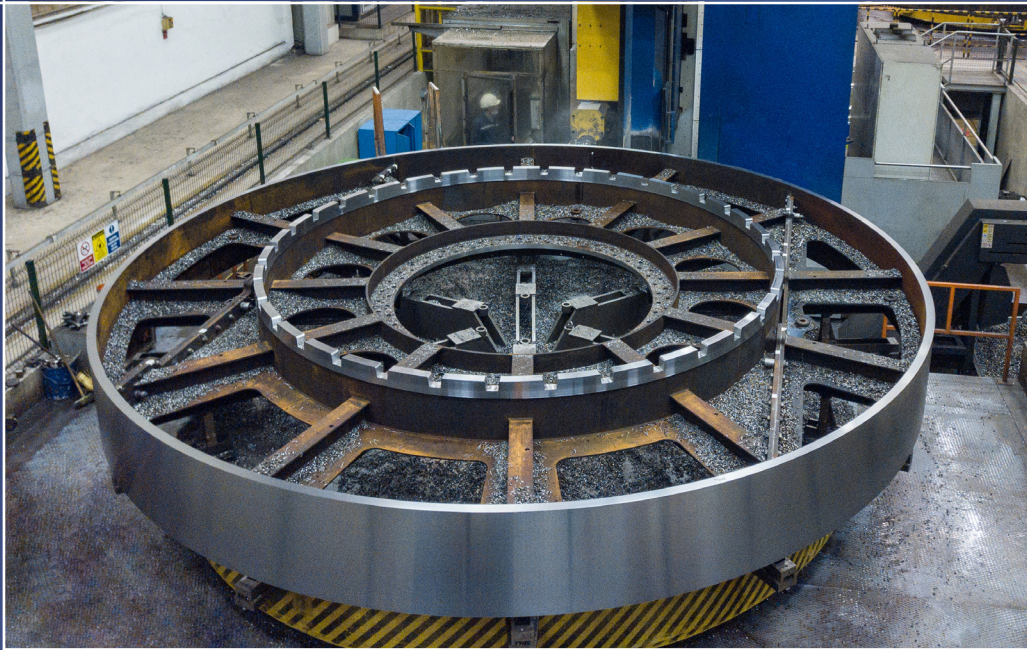


**200 mm**  
Cold Plate Rolling



**Rotor & Stator**





**ROTOR** MACHINING



**STATOR** MACHINING



**ROTOR** FABRICATION



**STATOR** FABRICATION

# OFFSHORE STRUCTURES

ENGINEERING  
ASSEMBLY

FABRICATION  
TRANSPORTATION



**STINGER SECTION PROJECT**  **600 t 50 m & 18 m & 10 m**

*The Netherlands*



**Floating** Offshore  
Structures



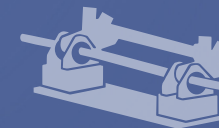
**Monopiles &**  
Transition Pieces



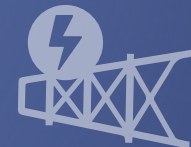
**Jackets**



**Top sides &**  
**FPSO-FSRU** Modules



**On - Site**  
Machining



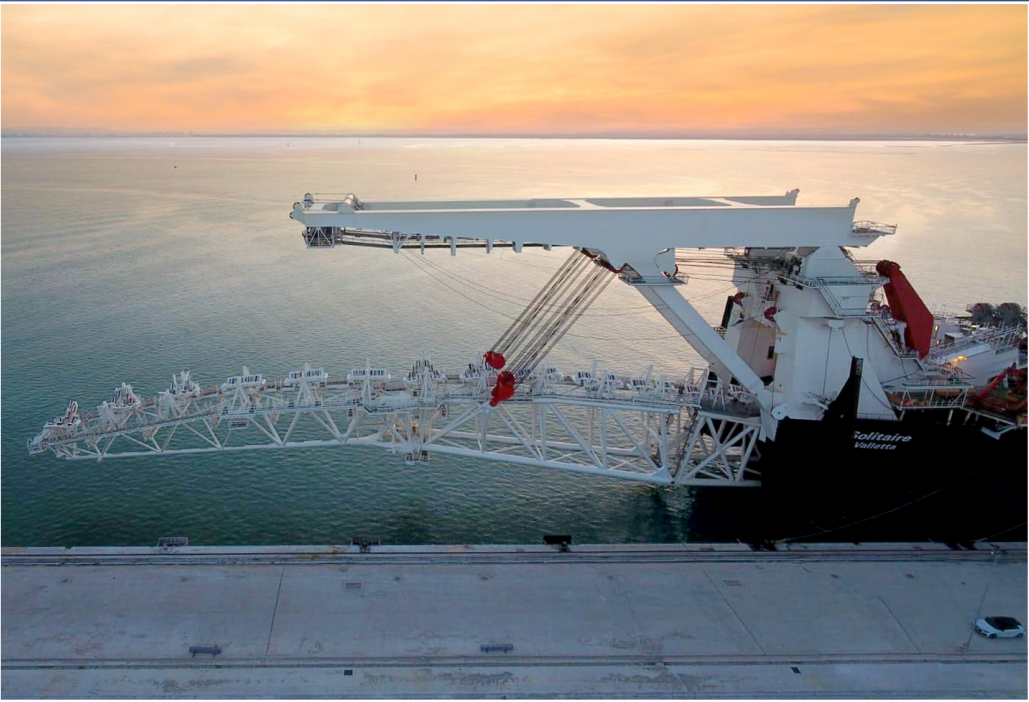
**Electrical**  
Appurtenances



**Cathodic**  
Protection



**Mechanical**  
Installation



# INSTALLATION

STRUCTURAL STEEL  
PIPING

EQUIPMENT  
MODULE



**780,000 t**  
Installed



**15**  
Countries



**High Rises**



**Steel Bridges**



**Power, Oil & Gas**  
Plants



**Industrial**  
Plants



**Airports**



**Stadiums**

**MAKKAH CLOCK TOWER** | 601 m | 14,500 t | *The World's 3<sup>rd</sup> Tallest Building*

KSA



**İZMİR-GEBZE-ADAPAZARI CCPP**  
⚡ 3,850 MW

*Turkey*



**WALSUM COAL FIRED POWER PLANT**  
⚡ 800 MW

*Germany*



**RIJNSMOND CCPP**  
⚡ 770 MW

*The Netherlands*



**SECOND GENERATION PROJECT**  
💧 25 Million t

*Kazakhstan*



**MOSCOW EURASIA TOWER**

⌈ 310 m    📐 28,500 t

*Russia*



**MUSCAT INTERNATIONAL AIRPORT**

👤 12 M P    📐 32,000 t

*Oman*



**DONBASS ARENA STADIUM**

🪑 53,000 S    📐 4,500 t

*Ukraine*



**MOSCOW NABEREZHNAYA TOWER**

⌈ 270 m    📐 13,000 t

*Russia*

# MODULARIZATION

ENGINEERING  
ASSEMBLY

FABRICATION  
TRANSPORTATION



PETROBRAZI PLANT CCR



700 t

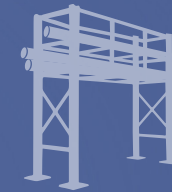
Romania



30,000 t



22 Countries



Pre-Assembled  
Racks



Pre-Assembled  
Units



Process Skids



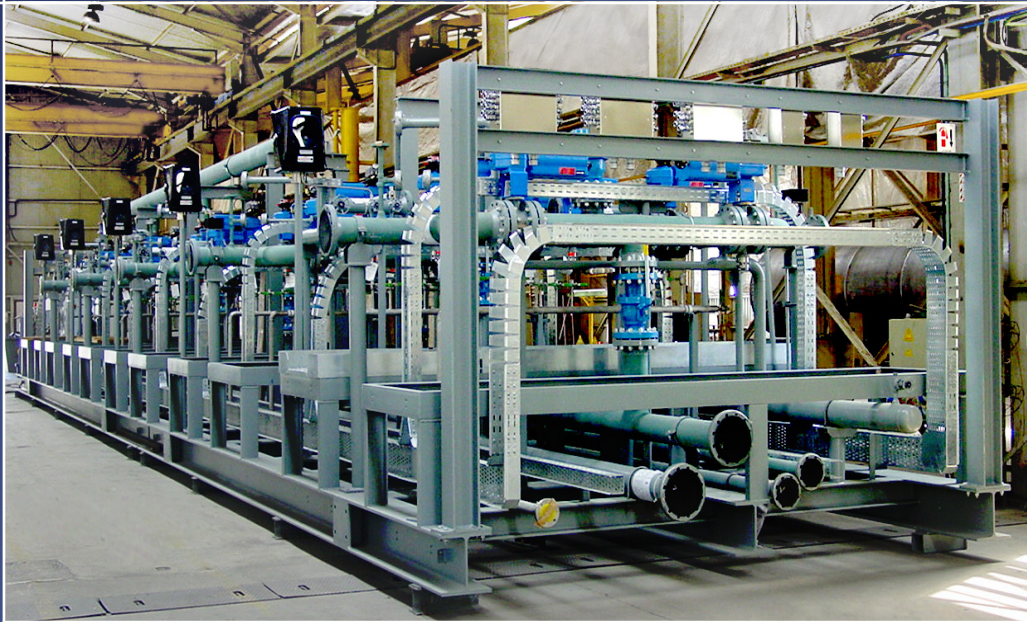
Boilers & HRSGs



Modular  
Bridges



Modularized  
Buildings



**POLY BED HYDROGEN PURIFICATION SKID PROJECT** *Russia*  
150 t



**SECOND GENERATION PROJECT** *Kazakhstan*  
400 t



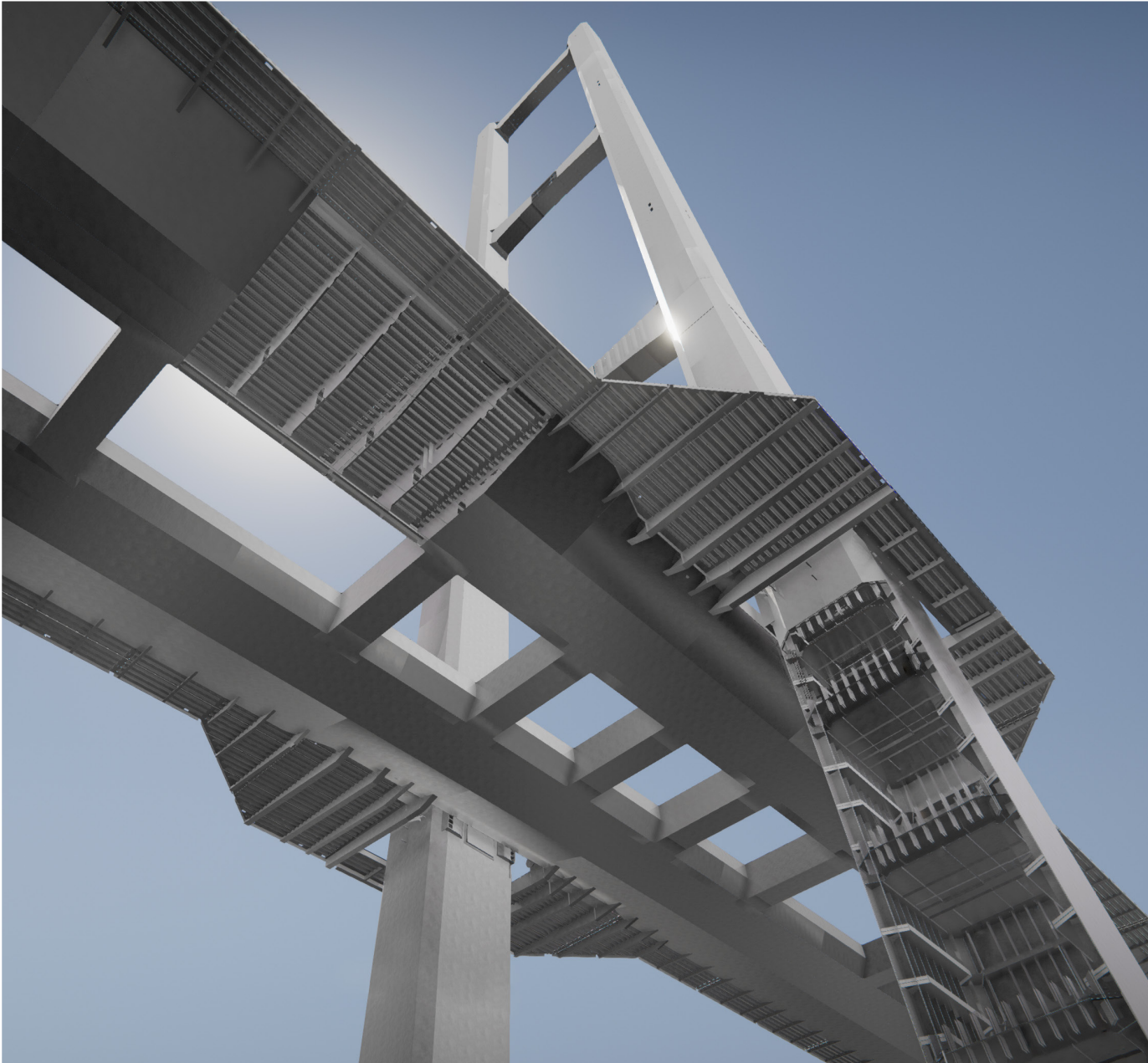
**SECOND GENERATION PROJECT** *Kazakhstan*  
500 t



**WEST QURNA PROJECT** *Iraq*  
2,000 t

# ENGINEERING

SOPHISTICATED & UP-TO-DATE SOFTWARES  
DATA MANAGEMENT PACKAGES



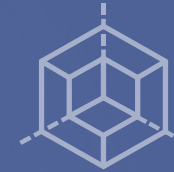
1915 ÇANAKKALE SUSPENSION BRIDGE 3D MODEL



**Analysis**



**Connection Design**



**Modeling**



**Shop Drawing**



**Coding**



**BIM**



**Method Engineering**



**R & D**

# OPERATIONS



PRODUCTION  
PROCUREMENT

QUALITY  
LOGISTICS



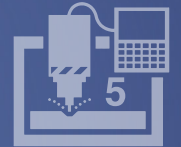
**200**  
Engineers



**20**  
Fabrication Halls



**CNC**  
Operations



**5-AXIS**  
Machining



Indoor/Outdoor  
**Assembly**



Robotic  
**Blasting & Painting**



**300 t**  
Indoor Crane Capacity



**2000 t**  
Handling Capacity



**CNC PLATE** - PROFILE BENDING



**5-AXIS** CNC MACHINING



**ROBOTIC** - AUTOMATED - MANUAL WELDING



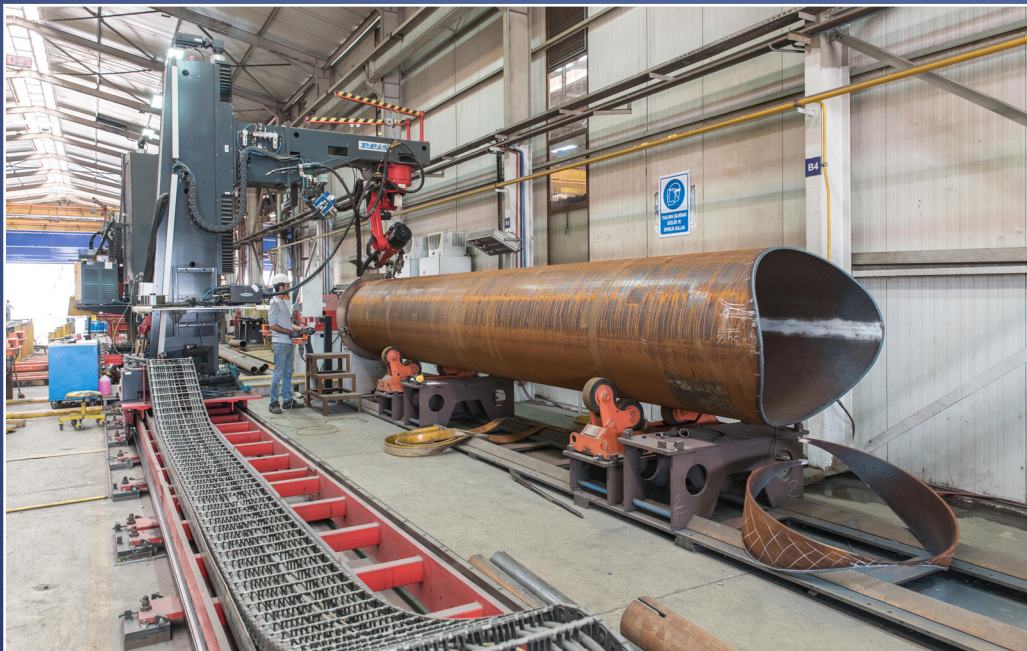
**WELD** OVERLAY



**CNC CUTTING - DRILLING - BENDING**



**COLD PLATE ROLLING**



**ROBOTIC CUTTING - WELDING**



**ROBOTIC - MANUAL BLASTING - PAINTING**



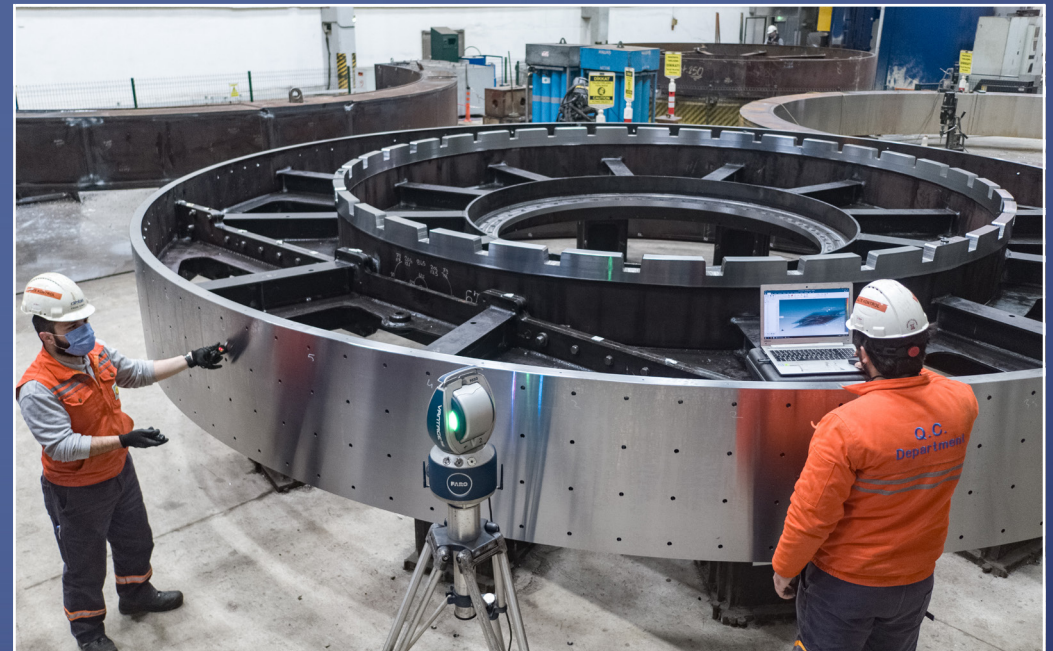
**CERTIFIED** QUALITY MANAGEMENT SYSTEMS



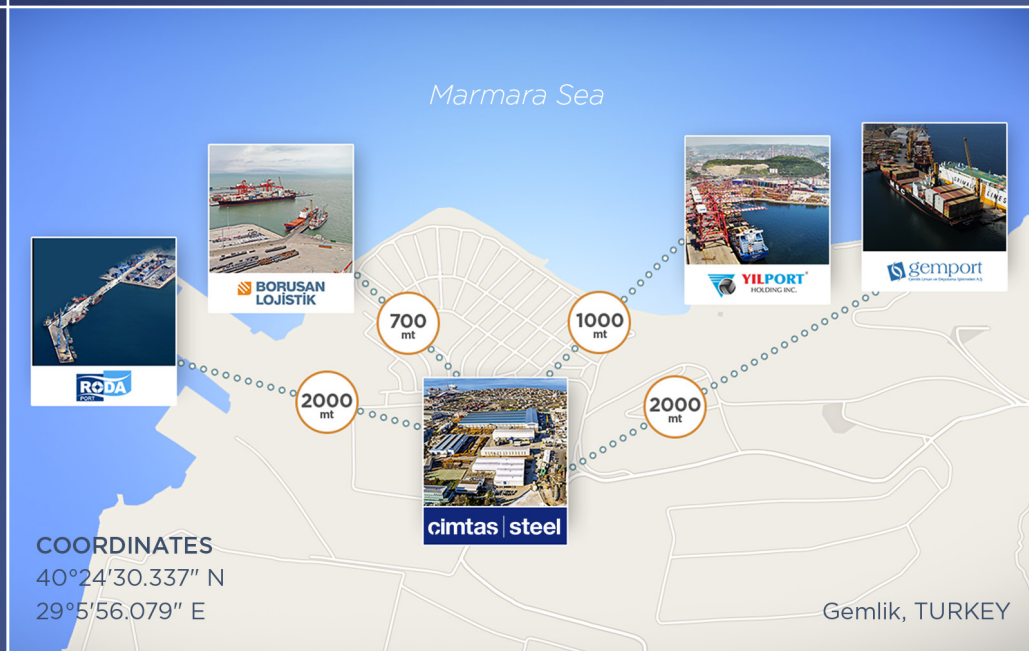
**INDEPENDENT** QA&QC ORGANIZATION



**IN-HOUSE** CERTIFIED NDE PERSONNEL



**STATE OF THE ART TECHNOLOGY**



**4 INTERNATIONAL DEEP SEA PORTS** WITHIN 2 km RANGE



**OWN LAND & SEA FLEET**



**2,000 t HORIZONTAL & VERTICAL** TRANSPORT CAPACITY



**IN-HOUSE LOGISTICS ORGANIZATION**

# cimtas | shipyard



ÇİMTAŞ SHIPYARD manufactures structural steel, steel wind towers, offshore structures, modules and sea vessels at its facility having vast assembly yards and a self-quay for direct sea transportation.

A subsidiary of **cimtas | steel**



**50,000 t**  
Fabrication



**60,000 t**  
Assembly



**1,800**  
Employees



**252 m**  
Waterfront



**400 t**  
Portal Crane Capacity



**2000 t**  
Handling Capacity



**Zero**  
Accident Policy



**Free Trade**  
Zone

# BUSINESS LINES



**STRUCTURAL  
STEEL**



**STEEL  
WIND TOWERS**



**OFFSHORE  
STRUCTURES**



**SHIPBUILDING**



**POWERSHIPS**



**MODULARIZATION**

# STRUCTURAL STEEL

ENGINEERING  
ASSEMBLY

FABRICATION  
TRANSPORTATION



1915 ÇANAKKALE SUSPENSION BRIDGE GIRDER BLOCK



Steel Bridges



Industrial  
Plants



Airports



Power, Oil & Gas Plants

# STEEL WIND TOWERS

MASS PRODUCTION  
MECHANICAL - ELECTRICAL WORKS



**8 m**



**45 m**  
Section



**400 t**  
Section

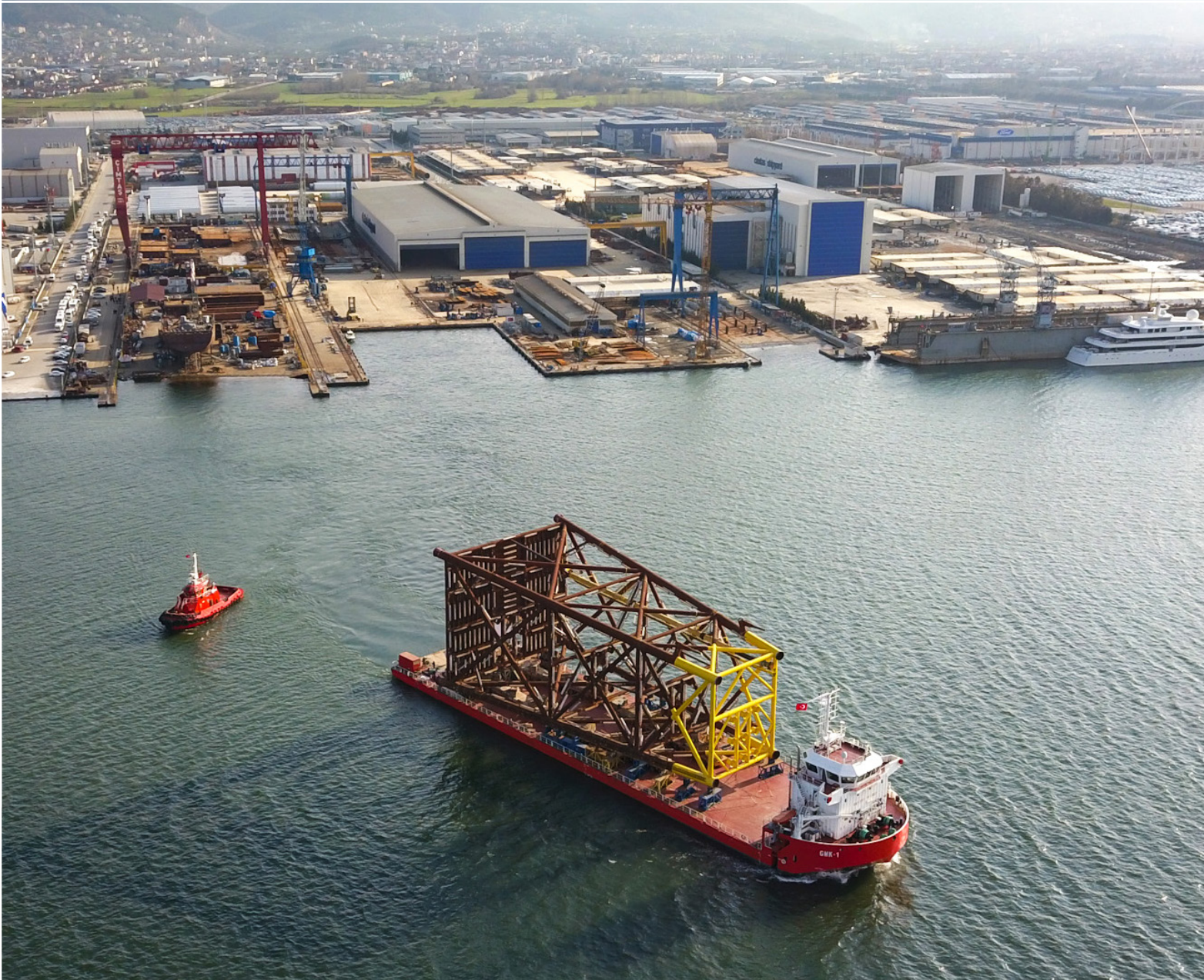


**Onshore & Offshore**

# OFFSHORE STRUCTURES

ENGINEERING  
ASSEMBLY

FABRICATION  
TRANSPORTATION



**Jackets**



**Jack - up &  
Platforms**



**Monopiles &  
Transition Pieces**



**Offshore Platforms**

**KUZEY MARMARA UNDERGROUND GAS STORAGE EXPANSION PROJECT**  **4,000 t**

*Turkey*



# SHIPBUILDING

ENGINEERING      FABRICATION  
MECHANICAL - ELECTRICAL WORKS



**GMK-1** DYNAMIC POSITIONING SERVICE VESSEL

 DWT: **4,200 t**     93 m x 22 m



**Barges**



**Tankers**



**Gas Carriers**



**Special Service Vessels**



☐ DWT: **7,000 t**    ⇄ 110 m x 17 m



☐ DWT: **5,850 t**    ⇄ 106 m x 17 m



☐ DWT: **5,800 t**    ⇄ 105 m x 18 m



☐ DWT: **5,700 t**    ⇄ 100 m x 16,6 m

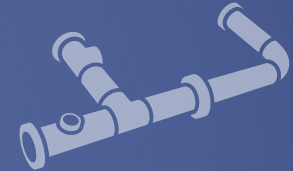
# POWERSHIPS

ENGINEERING  
ASSEMBLY

FABRICATION  
COMMISSIONING



**Structural Works**



**Piping Works**



**Equipment & Instrumentation  
Installation**



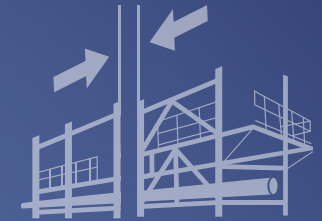
**Mechanical & Electrical  
Installation**

**KPS6 POWERSHIP** ⚡ **114 MW** ⇄ 158 m x 28 m

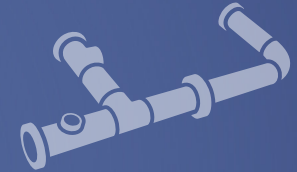
# MODULARIZATION

ENGINEERING  
ASSEMBLY

FABRICATION  
TRANSPORTATION



**Structural** Assembly



**Piping**  
Fabrication & Installation



**Equipment & Instrumentation**  
Installation



**Mechanical & Electrical**  
Installation

WEST QURNA PROJECT  2,000 t

*Iraq*



# OTHER SUBSIDIARIES

## ÇİMTAŞ PIPE - FITTING - SPOOL



### *Gemlik / Turkey*

Fenced Area	: 130,000 m <sup>2</sup>
Covered Area	: 70,000 m <sup>2</sup>
Number of Employees	: 900
Spool Fabrication	: 42,000 t
Pipe-Fitting Manufacturing	: 150,000 t

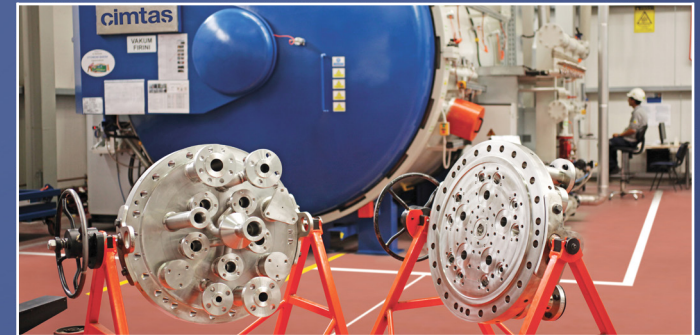
## ÇİMTAŞ NINGBO



### *Ningbo / China*

Fenced Area	: 55,250 m <sup>2</sup>
Covered Area	: 31,700 m <sup>2</sup>
Number of Employees	: 400
Spool Fabrication	: 20,000 t

## ÇİMTAŞ PRECISION MACHINING



### *Gemlik / Turkey*

Fenced Area	: 12,000 m <sup>2</sup>
Covered Area	: 11,400 m <sup>2</sup>
Number of Employees	: 300

FOR MORE  
[www.cimtas.com](http://www.cimtas.com)  
THANK YOU

