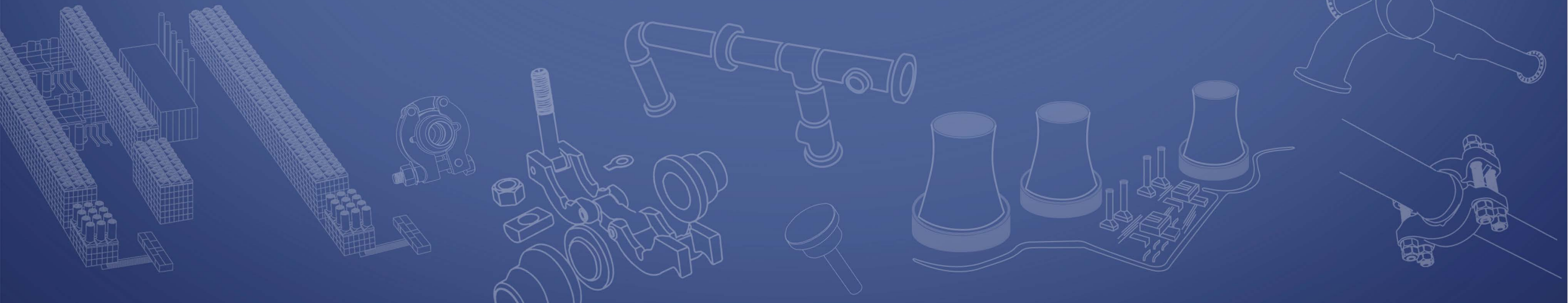


cimtas | ningbo

COMPANY OVERVIEW 2024



WHO WE ARE



cimtas | ningbo



20,000 t
Spool Capacity



6,000 t
Assembly / Annual



50,000 t
Fabricated



650
Employees



+55
Countries



+350
Major Projects



Zero
Accident Policy



Free Trade
Zone

ÇİMTAŞ NINGBO, member of ÇİMTAŞ GROUP, provides process & OEM piping, skid-mounted process assemblies, and modularization solutions to power, oil & gas and petrochemical industries.

ENKA

More than **570** Projects in **53** Countries
More than **60 Billion USD** Historical Contract Value

53rd @ ENR Top 250 International Contractors List - 2023
More than **20,000** Employees



OIL, GAS & PETROCHEMICALS



POWER PLANTS

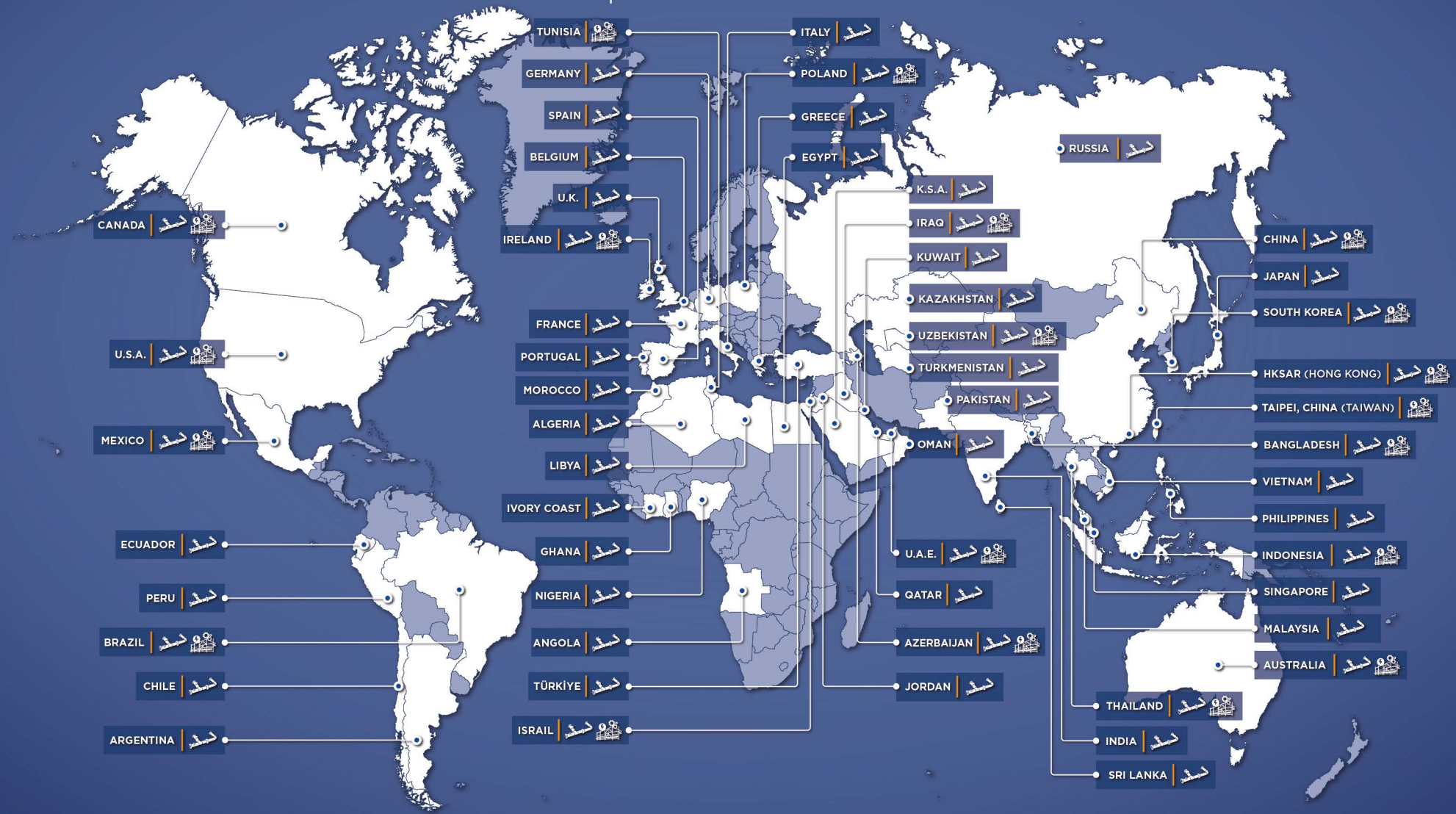


INFRASTRUCTURE

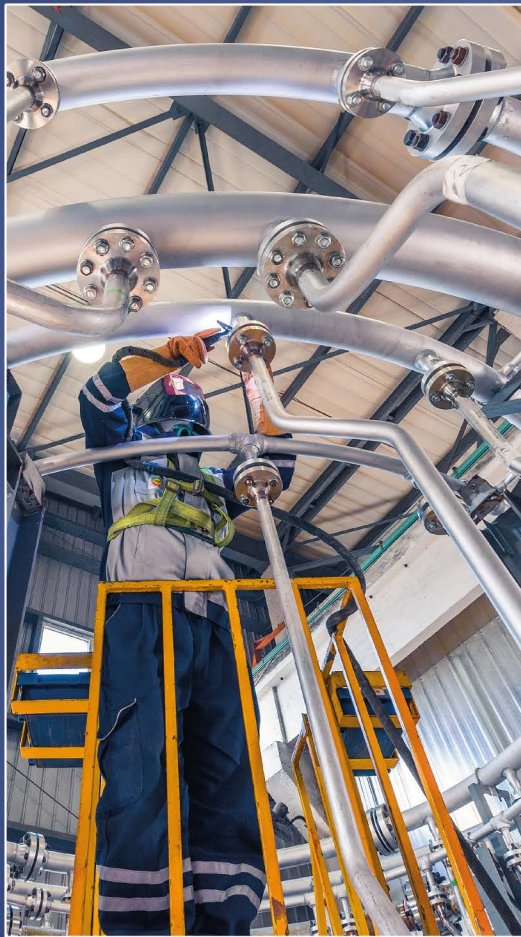


BUILDING WORKS

WORLDWIDE PROJECTS



BUSINESS LINES



PIPE SPOOLS



MODULARIZATION



ENERGY SERVICES



QUICK RELEASE FLANGES

PIPE SPOOLS



20,000 t / 1.5 M Dia”
Fabrication Capacity



+95%
Local (China) Sourcing



5,950 WPS
2,350 PQR



+55
Countries



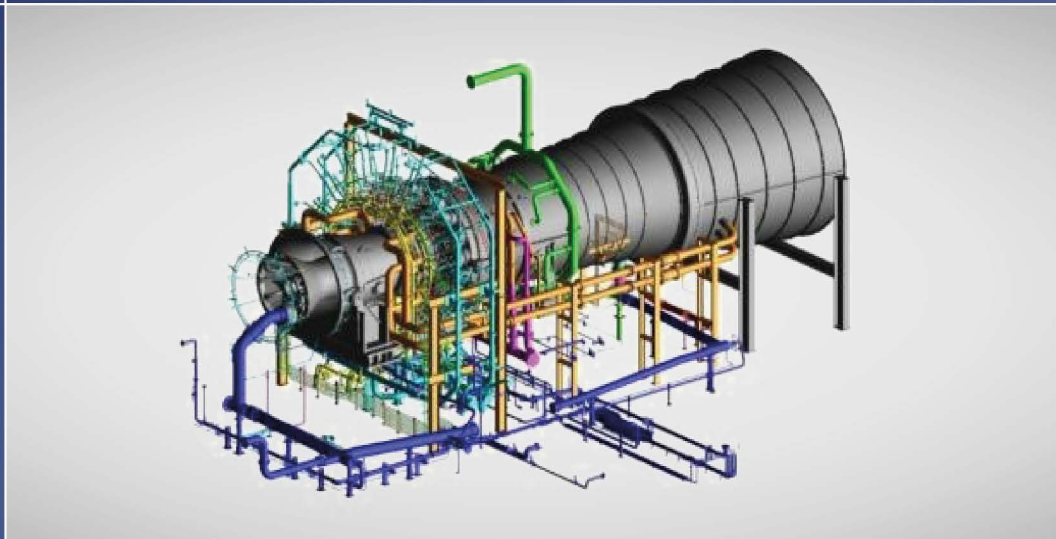
+350
Major Projects



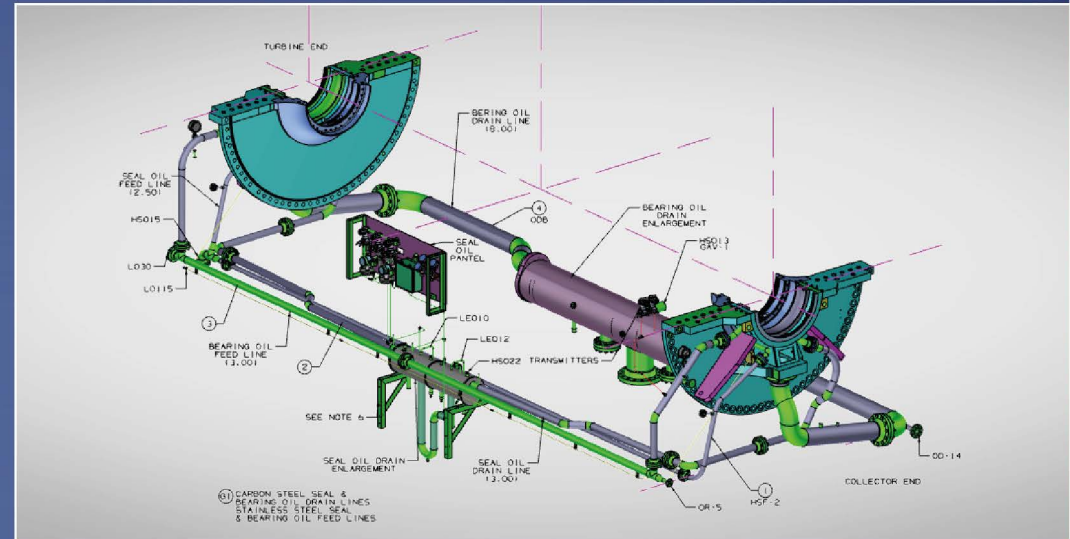
Zero
Accident Policy



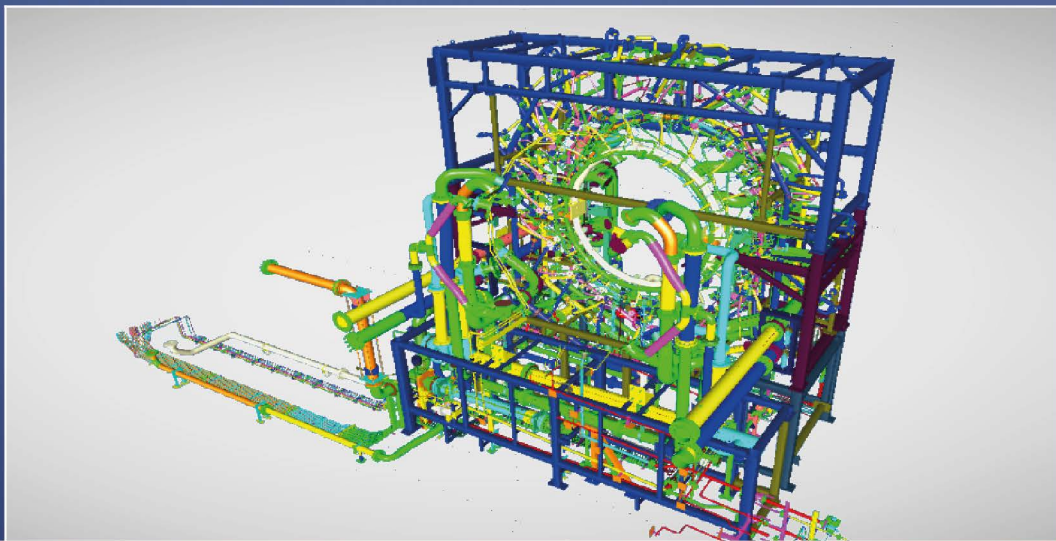
Free Trade
Zone



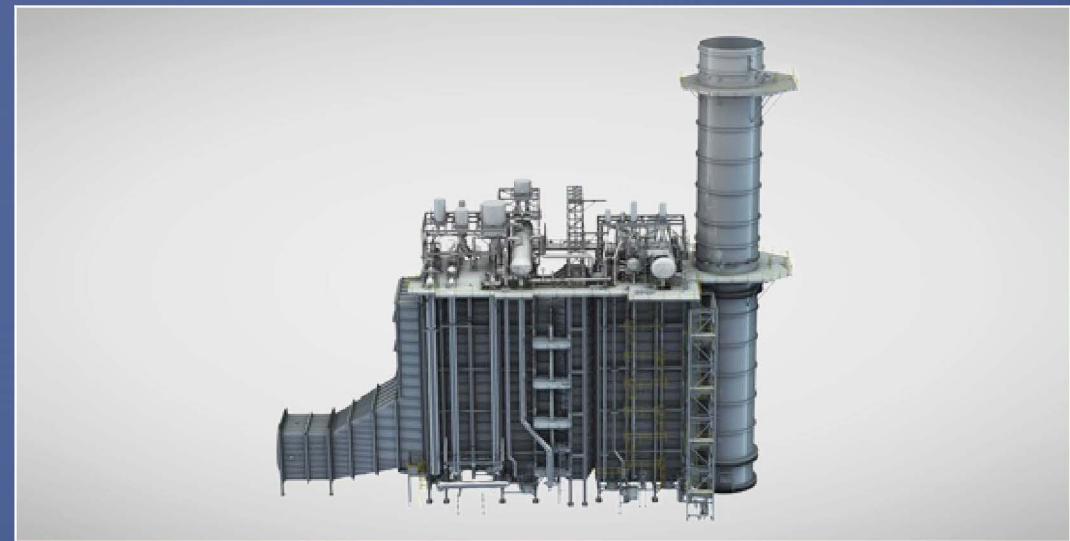
GAS TURBINE PIPING



GENERATOR PIPING



MODULARIZED PIPING



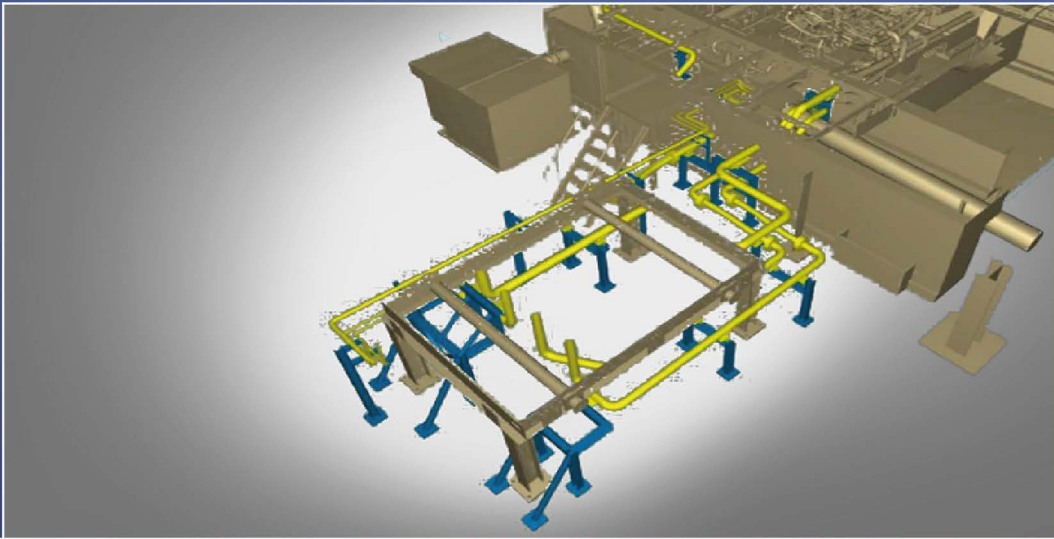
HRSG PIPING



MAIN STEAM PIPING



SKID PIPING



BOP PIPING



LNG PIPING

MODULARIZATION



ENGINEERING
INSTALLATION

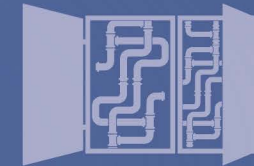
FABRICATION
TRANSPORTATION



**Pre-Assembled
Racks**



**6,000 t
Assembly / Annual**



Process Skids



E & I Systems



**+20
Countries**



**Gas Turbine
Modularization**

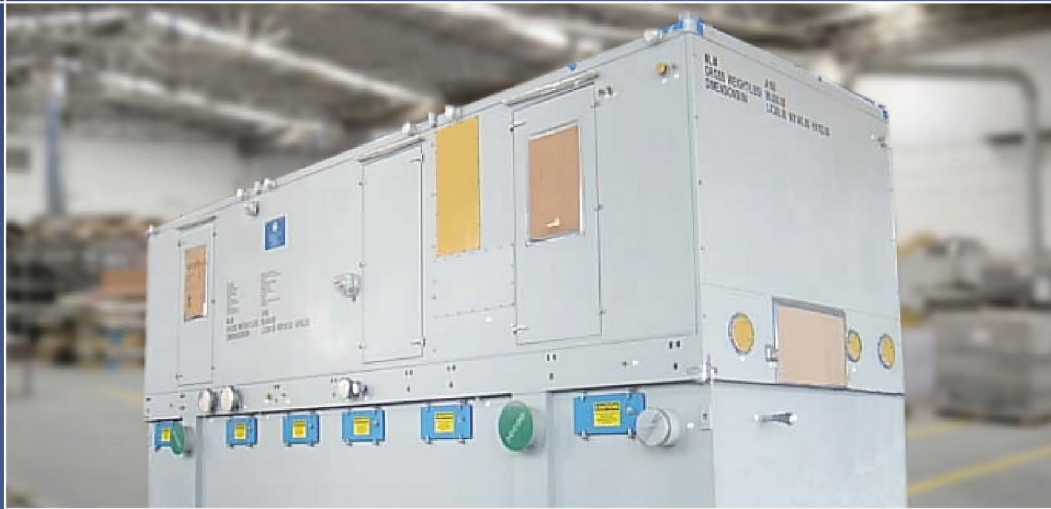


Customer Excellence

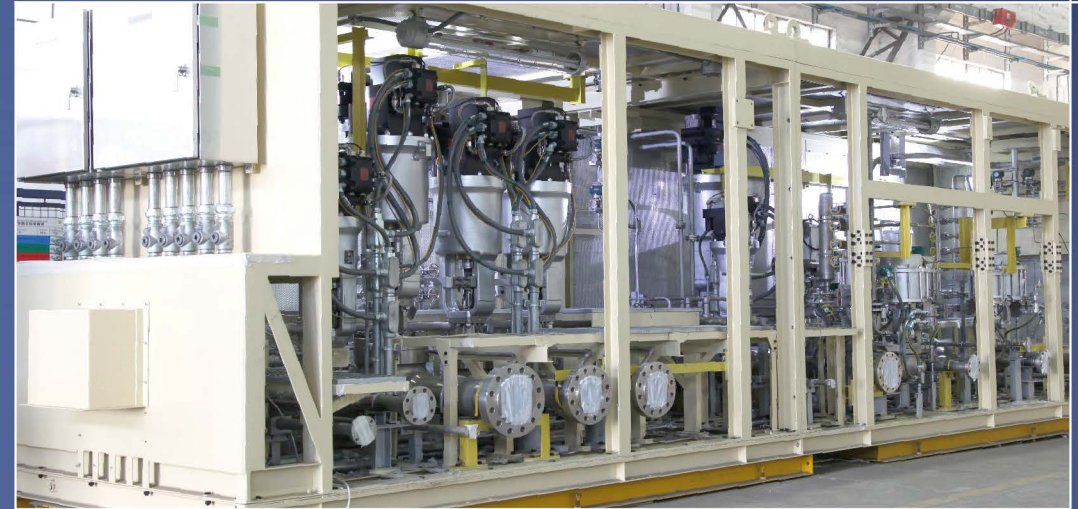


Boilers & HRSGs

SKID/MODULE PROJECTS



GENERAL ELECTRIC A160 SKID



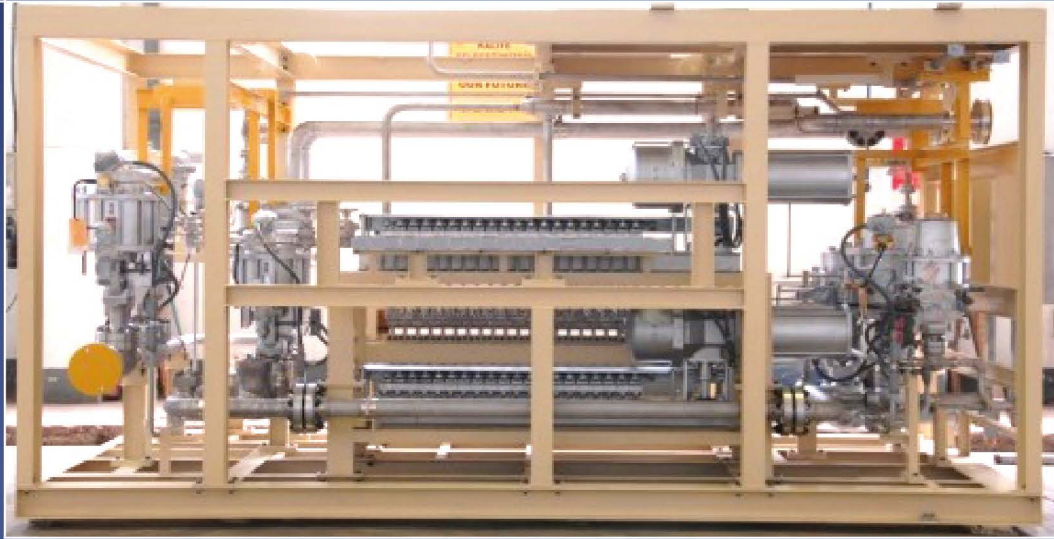
MITSUBISHI POWER M701F5 FUEL GAS MODULE



MITSUBISHI POWER PURGE AIR SKID



MITSUBISHI POWER 501J FUEL GAS & PURGE AIR ASSEMBLIES



MITSUBISHI POWER FLOW DIVIDER



MITSUBISHI POWER FUEL GAS SKIDS



MITSUBISHI POWER M701 F4 FUEL GAS SKID

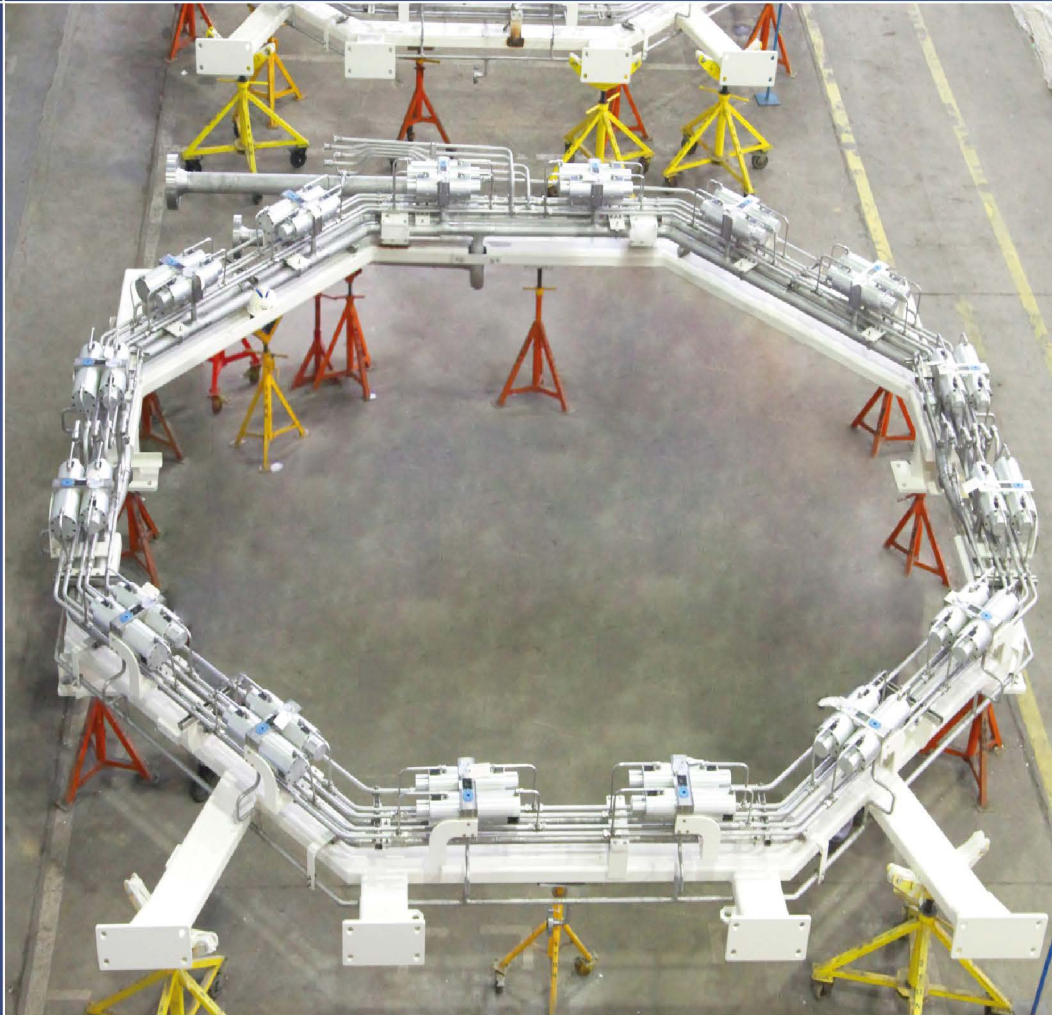


MITSUBISHI POWER M701 F4 FUEL GAS SKID

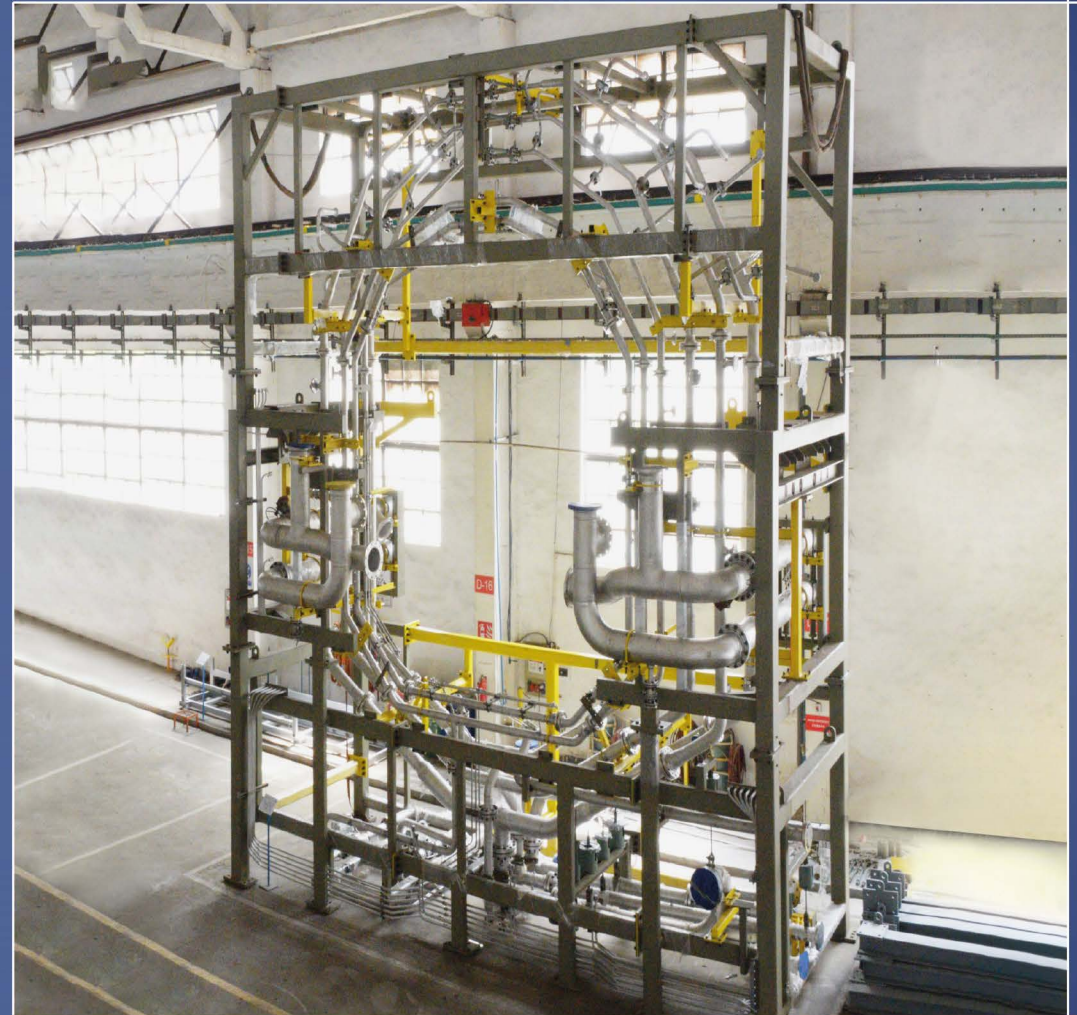
PHARMACEUTICAL SKIDS



MODULES



GENERAL ELECTRIC EPE 9HA 9016 MODULE



GENERAL ELECTRIC 9FA MSD PIPING MODULES

SELECTED JIG PROJECTS



MITSUBISHI POWER AMERICA M501J JIG



MITSUBISHI POWER AMERICA M501J JIG

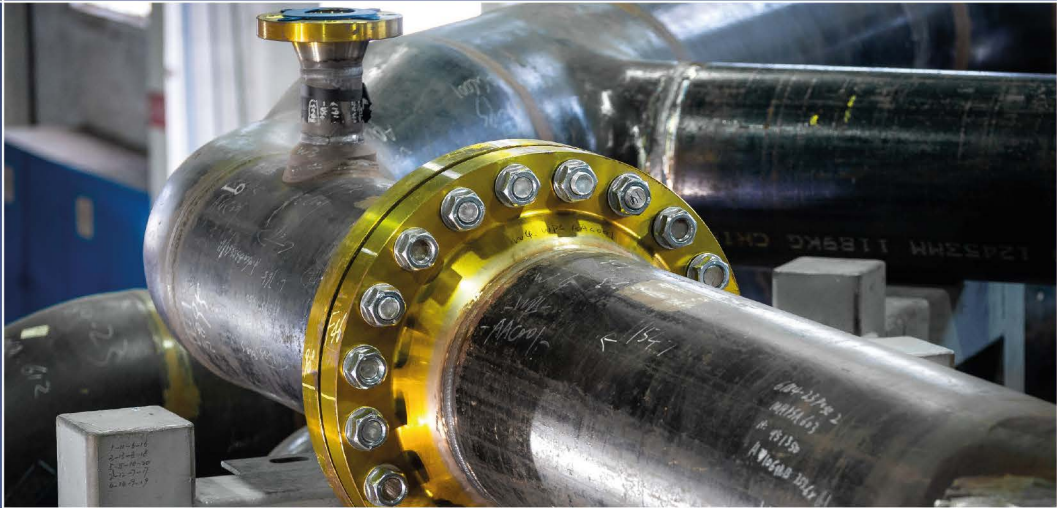


MITSUBISHI POWER M701F4 JIG



MITSUBISHI POWER M701F4 JIG

BLEED AIR JIG



ENERGY SERVICES



Supply of Piping and Auxiliary Components
for Maintenance



Repair & Overhaul
Operations



Short Cycle Times
Expedited Solutions



Agility, Flexibility, Adaptability at
Project Coordination,
Procurement and Production Planning

QUICK RELEASE FLANGES

6 DIFFERENT SIZES
214 DIFFERENT PART NUMBERS



Single
Bolted Clamps



4
Bolted Clamps

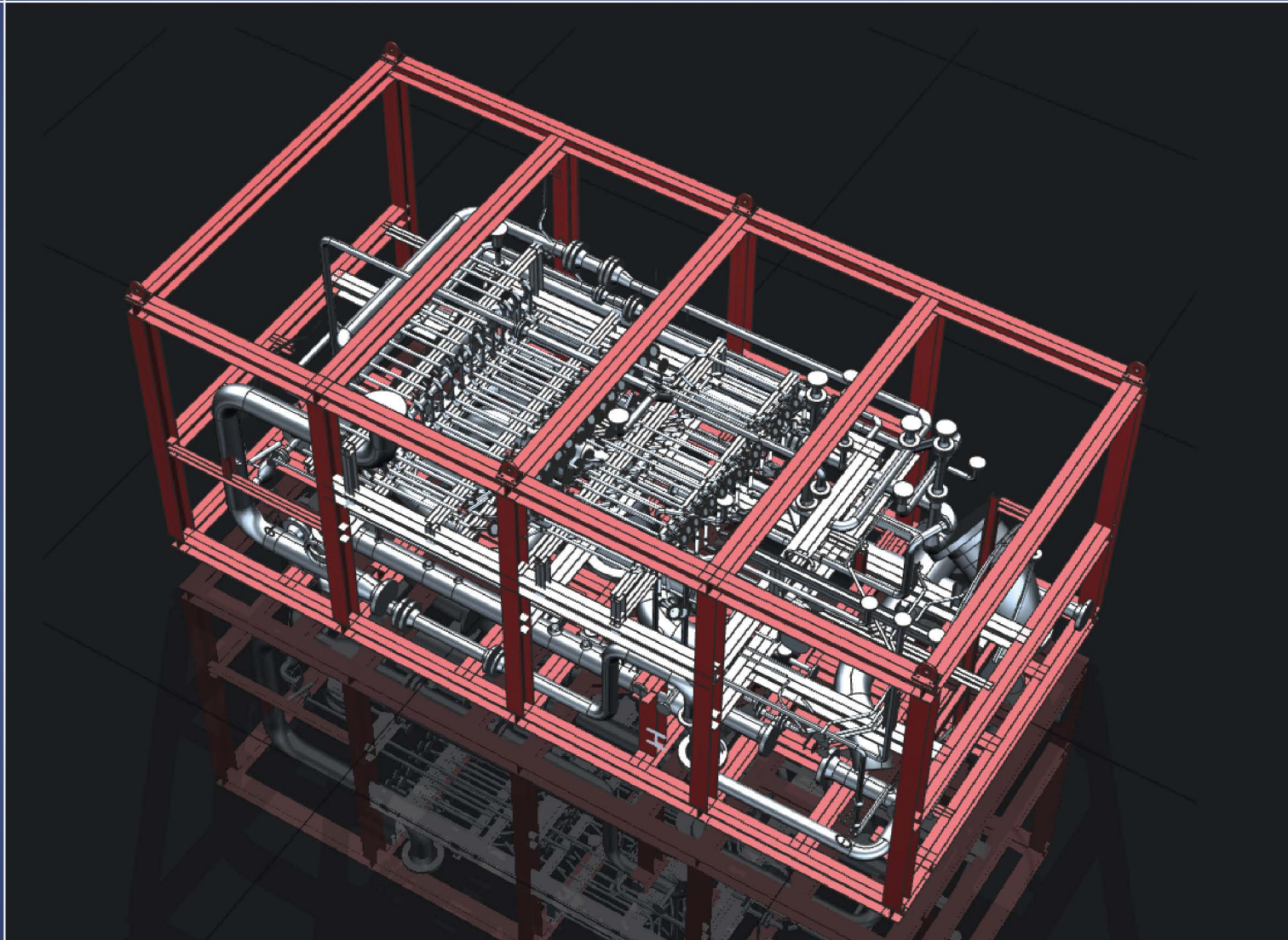


Hubs



Seals

ENGINEERING



International Design
Codes & Softwares



Plant & Piping
Design



Mechanical Design &
FEA Analysis



Pressure Vessel
Design



Modelling / Sharing



Electrical &
Instrument Design



3D Modelling
for all Disciplines



Civil, Structural &
Modular Design

CIVIL, MECHANICAL & STRUCTURAL DESIGN OF JIGS,
CABLEWAY & INSTRUMENT DETAIL DESIGN AND PROJECT SPECIFIC CUSTOM DESIGN SOLUTIONS

OPERATIONS



1/4" to 66"
Fabrication Range



Bending & Cutting



Heat Treatments & RT Equipment



Heavy Automation Machine



9
Fabrication Halls



Passivation & Pickling Pools



Sandblasting & Painting



35
Overhead Cranes



FABRICATION BAYS



HIGH MODULE ASSEMBLY BAY



WAREHOUSE (INDOOR)



WAREHOUSE (OUTDOOR)



AUXILIARY EQUIPMENT **GRIT BLASTING**
DIMENSIONS: 14.0x5.0x4.5m **QUANTITY:** 3 UNITS



AUXILIARY EQUIPMENT **HEAT TREATMENT**
UNIT-1 DIMENSIONS: 14.0x6.9x3.5m **UNIT-2 DIMENSIONS:** 8.0x4.0x3.0m



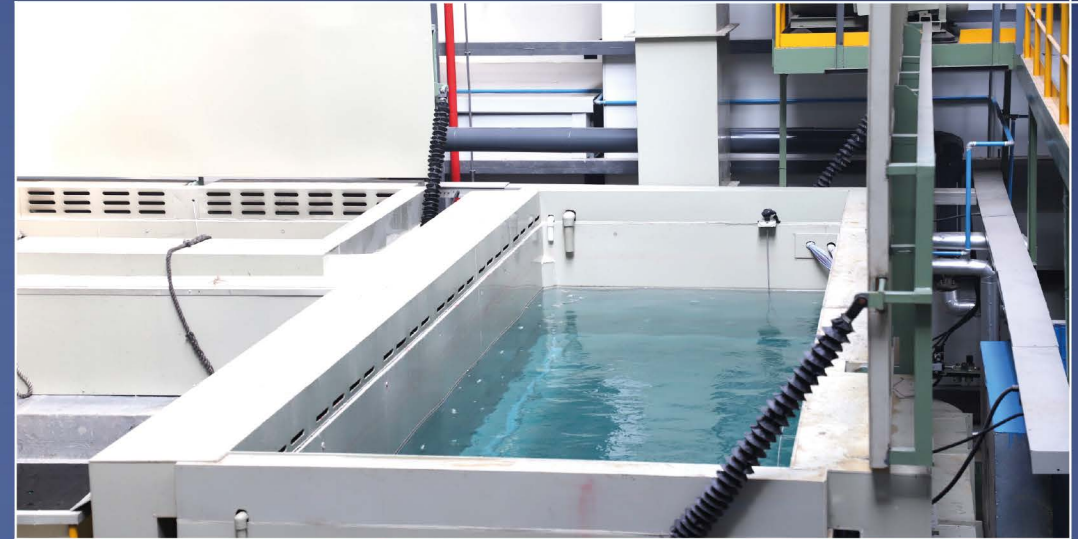
AUXILIARY EQUIPMENT **PAINTING**
DIMENSIONS: 20.0x12.0x5.0m **QUANTITY:** 2 UNITS



AUXILIARY EQUIPMENT **NDT**
UNIT-1 DIMENSIONS: 14.0x5.5x4.0m **UNIT-2 DIMENSIONS:** 14.0x5.5x3.5m



AUXILIARY EQUIPMENT **PICKLING** POOL



AUXILIARY EQUIPMENT **PHOSPHATE** POOL



AUXILIARY EQUIPMENT **STAINLESS STEEL** PRE-TREATMENT AREA
DIMENSIONS: 6.8*2.3*2.0m



AUXILIARY EQUIPMENT **CARBON STEEL** PRE-TREATMENT AREA
DIMENSIONS: 6.8*2.3*2.0m



COLD & ROUND BENDING



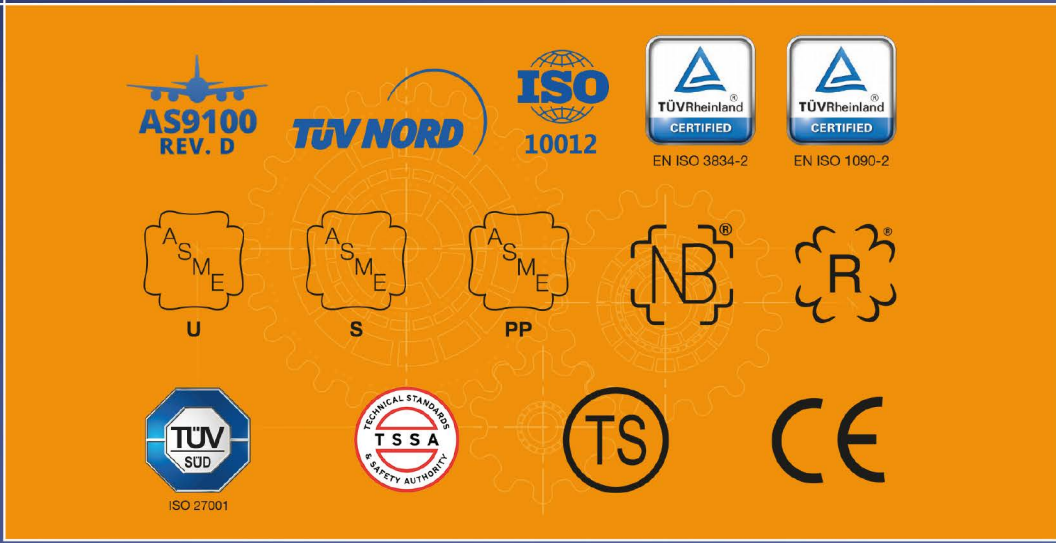
CUTTING



MANUAL WELDING



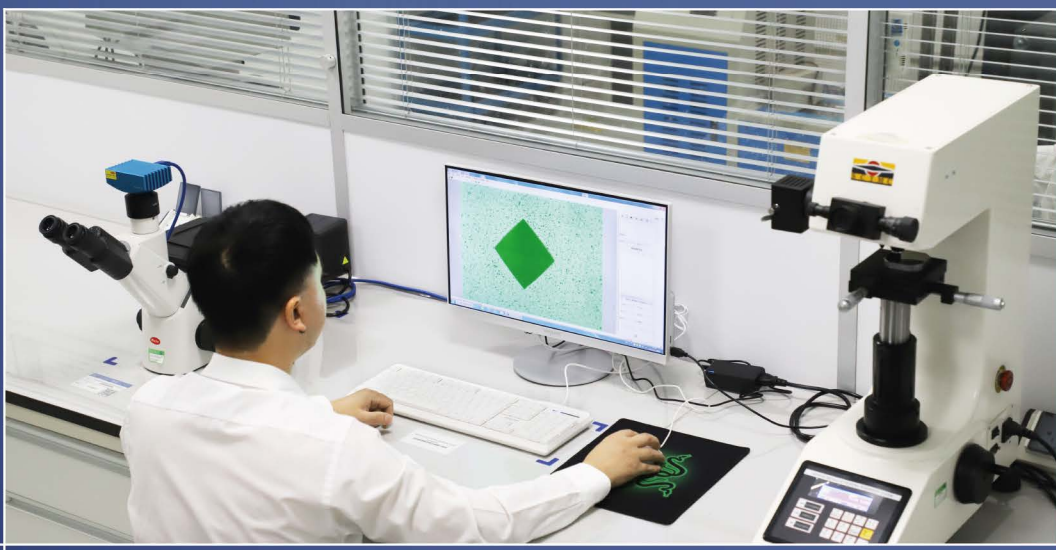
AUTOMATION WELDING



CERTIFIED QUALITY MANAGEMENT SYSTEMS



INDEPENDENT QA&QC ORGANIZATION

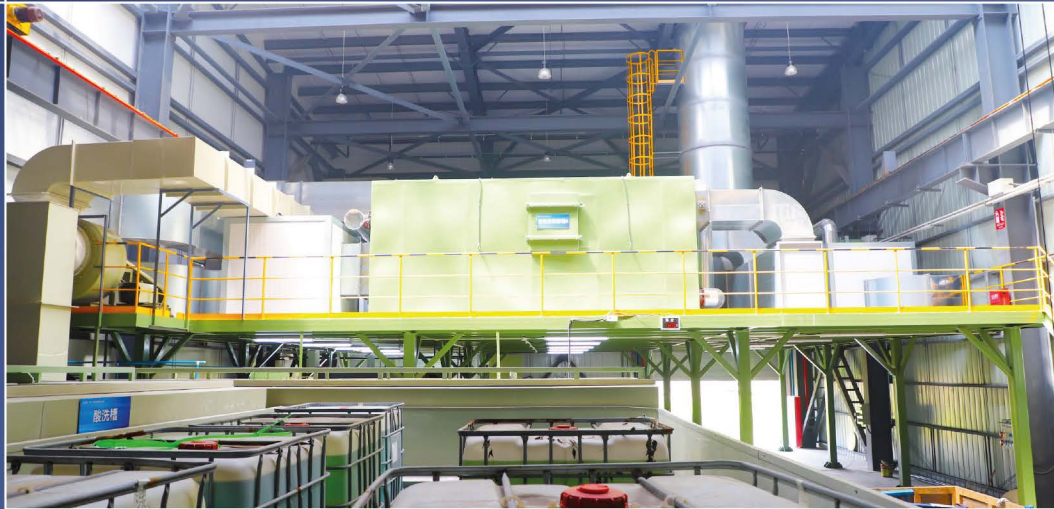


QA/QC LABORATORY



3D MEASUREMENTS

ENVIRONMENTAL PROTECTION



THE CATALYTIC COMBUSTION SYSTEM
CAPACITY: 30 ton/shift



WASTE WATER TREATMENT SYSTEM
CAPACITY: 2 ton/hour



ACID MIST PURIFICATION SYSTEM
CAPACITY: 40,000 m³/hour



CHEMICAL STORAGE AREA
CAPACITY: 40 ton

GROUP COMPANIES

ÇİMTAŞ STEEL



Gemlik / Türkiye

Fenced Area : 160,000 m²
Covered Area : 62,000 m²
Number of Employees : 2,000
Annual Fab. Capacity : 80,000 t

ÇİMTAŞ PIPE



Gemlik / Türkiye

Fenced Area : 120,000 m²
Covered Area : 75,000 m²
Number of Employees : 1,000
Annual Spool Fab. Capacity : 42,000 t
Pipe-Fitting Manufacturing : 165,000 t
Annual Fittings Capacity : 6,000 t
Annual LSAW Process Pipe Capacity : 40,000 t
Annual LSAW Line Pipe Capacity : 160,000 t

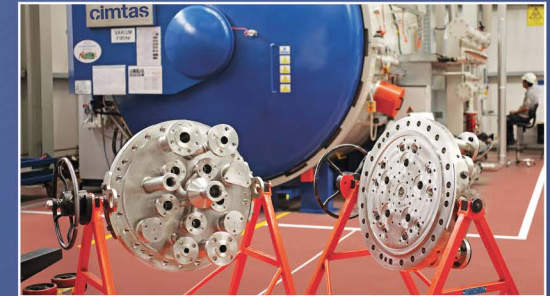
ÇİMTAŞ SHIPYARD



Gölcük / Türkiye

Fenced Area : 270,000 m²
Covered Area : 55,000 m²
Number of Employees : 1,400
Annual Fab. Capacity : 80,000 t

ÇİMTAŞ MACHINING



Gemlik / Türkiye

Fenced Area : 13,000 m²
Covered Area : 12,000 m²
Number of Employees : 300

FOR MORE
www.cimtasnbo.com
THANK YOU

