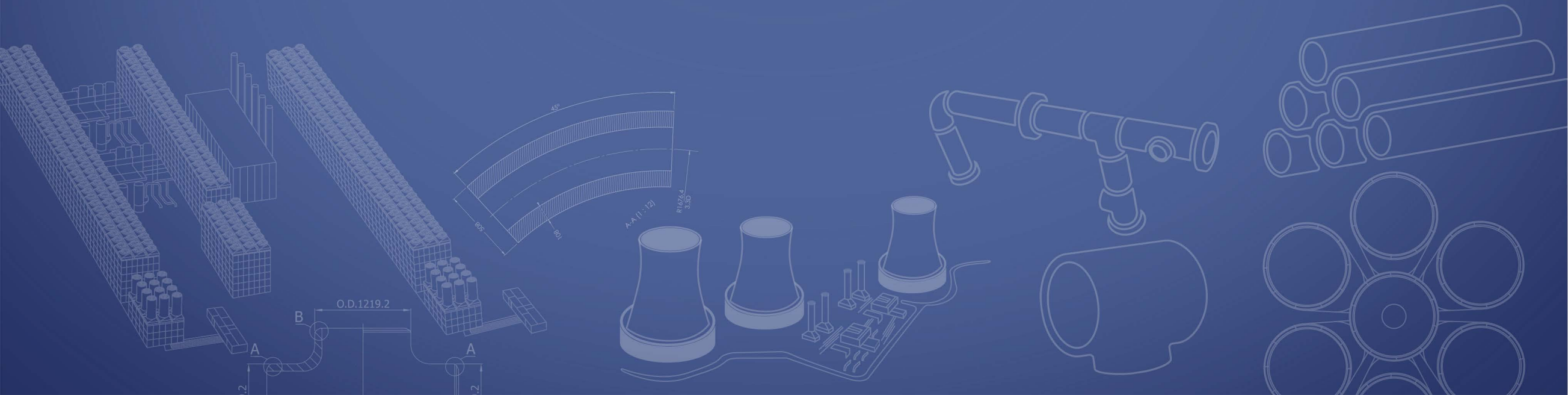


# cimtas | pipe

## COMPANY OVERVIEW 2024



# WHO WE ARE



Cimtas Pipe is a market-leading company providing engineering, procurement, manufacturing of LSAW pipes and fittings, fabrication of pipe spools for power, oil, gas and nuclear industry with the best in class vision.

## cimtas | pipe



**280,000 t**  
Total Fabricated



**40** Countries



**42,000 t**  
Spool Capacity



**+200**  
Major Projects



**40,000 t**  
LSAW  
Process Pipe Capacity



**Zero**  
Accident  
Policy



**6,000 t**  
Fitting Capacity



**Free Trade**  
Zone

# ENKA

More than **570** Projects in **53** Countries  
More than **60 Billion USD** Historical Contract Value

**53<sup>rd</sup>** @ ENR Top 250 International Contractors List - 2023  
More than **20,000** Employees



**OIL, GAS & PETROCHEMICALS**



**POWER PLANTS**



**INFRASTRUCTURE**



**BUILDING WORKS**

# WORLDWIDE PROJECTS



# BUSINESS LINES



**LSAW PIPE WORKS**



**FITTING WORKS**



**SPOOL WORKS**

# LSAW PIPE WORKS



**+40.000 t**  
Yearly Capacity / Process Piping

---



**+160.000 t**  
Yearly Capacity / Line Pipe

---

CS-SS-Alloy

Metallurgy

---



**16" to 64"**  
Range



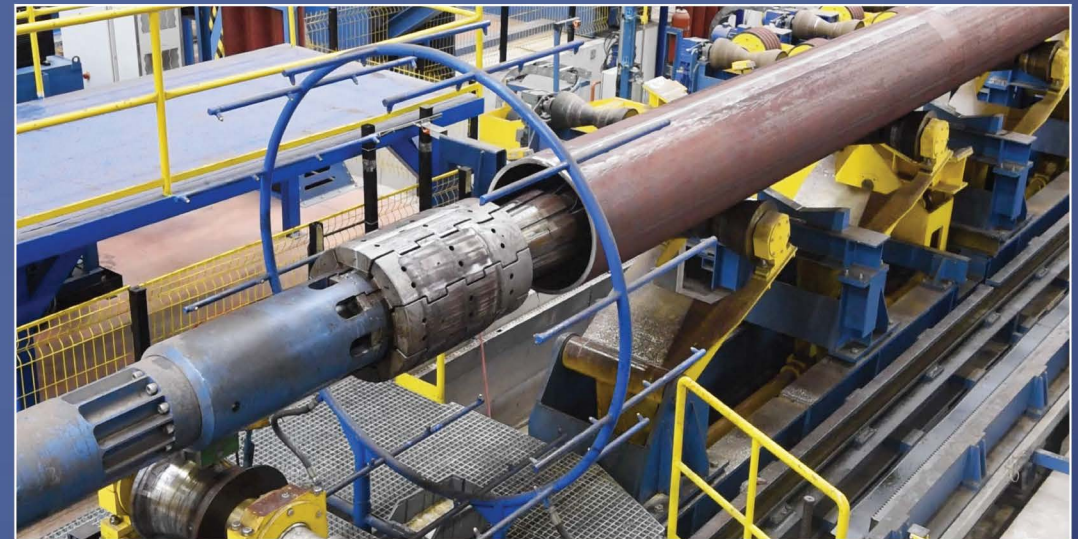
**JCO FORMING**



**POST BENDING**



**HEAT TREATMENT**



**FULL BODY MECHANICAL EXPANDER**

# FITTING WORKS



INDUCTION BENDS  
LATERAL TEES

ELBOWS  
TEES



**+ 500 t**  
Monthly Capacity



**+ 6.000 t**  
Yearly Capacity

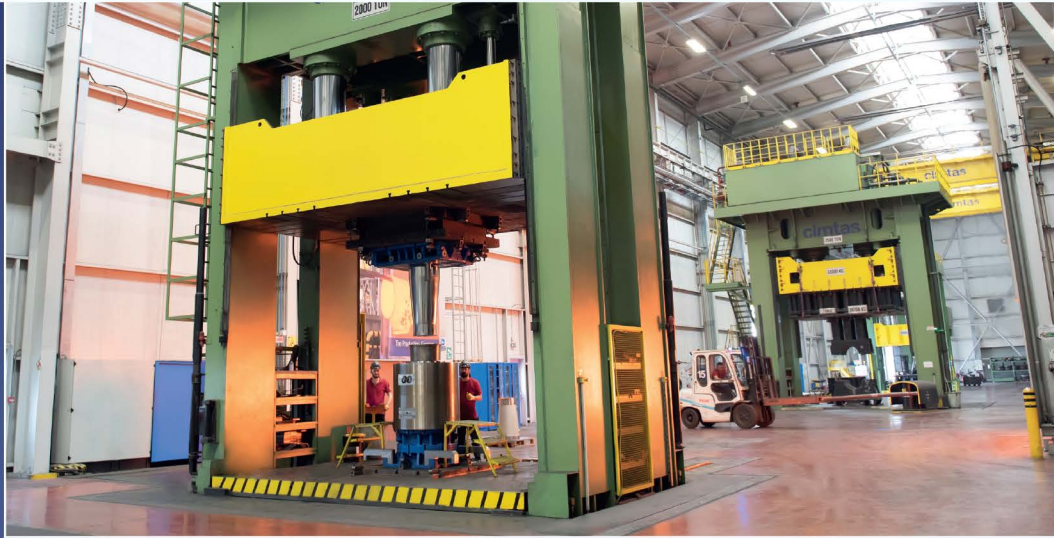
**CS-SS-Alloy**

Metallurgy



**0,5" to 60"**  
Range





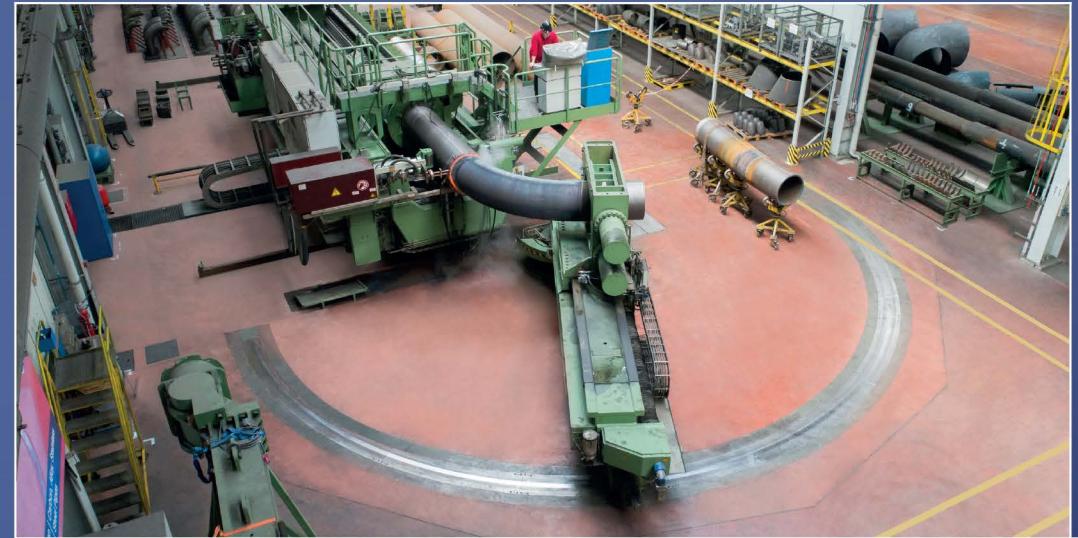
**HOT FORMING**



**HOT FORMING BY MANDREL**



**COLD FORMING**



**INDUCTION BENDING**

# SPOOL WORKS



**+ 220.000 t**  
Production in Total



**+ 20 M Dia"**  
Production in Total



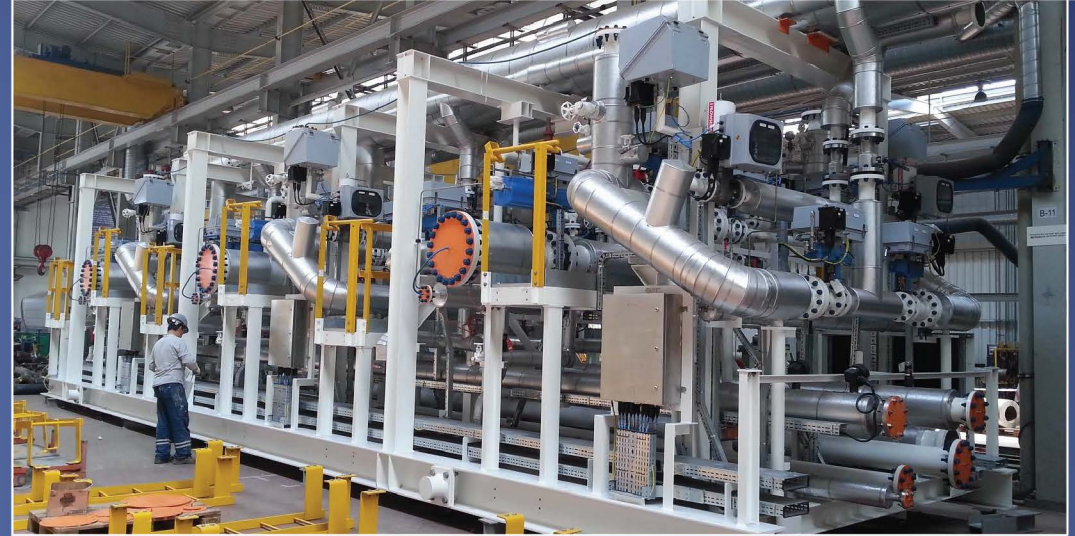
**+ 220.000 Dia"**  
Monthly Capacity



**+ 42.000 t**  
Yearly Capacity



PIPE SPOOL FABRICATION



SKID & MODULES



PACKAGING



TRANSPORTATION

# SABINE PASS LNG 6 TRAINS

ENGINEERING  
PROCUREMENT

FABRICATION  
TRANSPORTATION

📏 41,098 t / 2,6 M Dia"



# CORPUS CHRISTI LNG 3 TRAINS

ENGINEERING

PROCUREMENT

FABRICATION

21,371 t / 1,4 M Dia"





**ANGOLA LNG**

*Angola*



**QUEENSLAND LNG**

*Australia*



**GLADSTONE LNG**

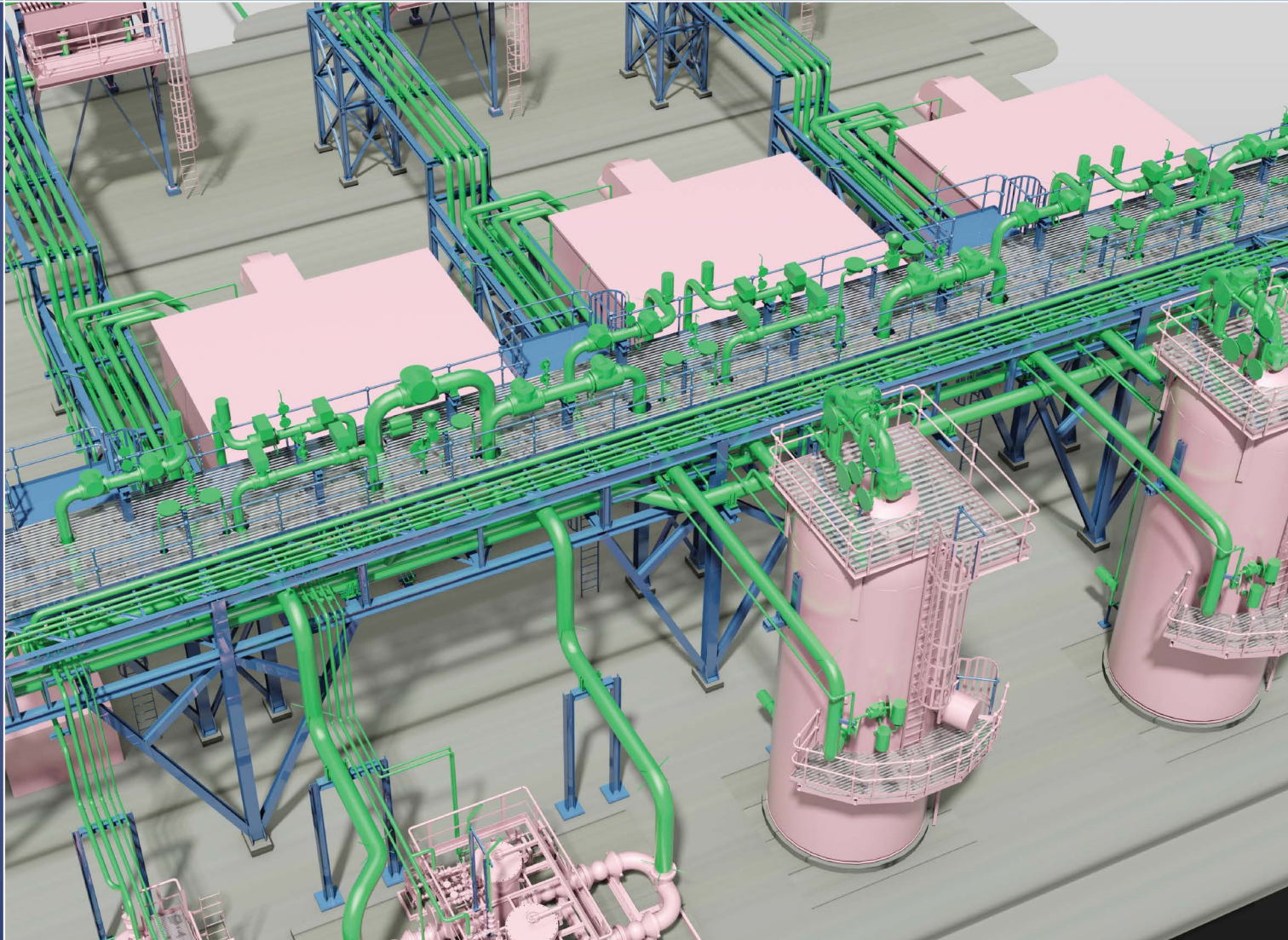
*Australia*



**AUSTRALIA PACIFIC LNG**

*Australia*

# ENGINEERING



WEST QURNA-2 OILFIELD SCGT, 3 X 42 MW



**International Design**  
Codes & Softwares



**Plant & Piping**  
Design



**Mechanical Design &**  
FEA Analysis



**Pressure Vessel**  
Design



**Modelling / Sharing**



**Electrical & Instrument**  
Design



**3D Modelling**  
for all Disciplines



**Civil, Structural &**  
Modular Design

# OPERATIONS



PRODUCTION  
PROCUREMENT

QUALITY  
LOGISTICS



**95**  
Engineers



**17**  
Fabrication Halls



**CNC**  
Operations



**5-AXIS**  
Machining



Indoor/Outdoor  
**Module Assembly**



Blasting &  
**Painting**

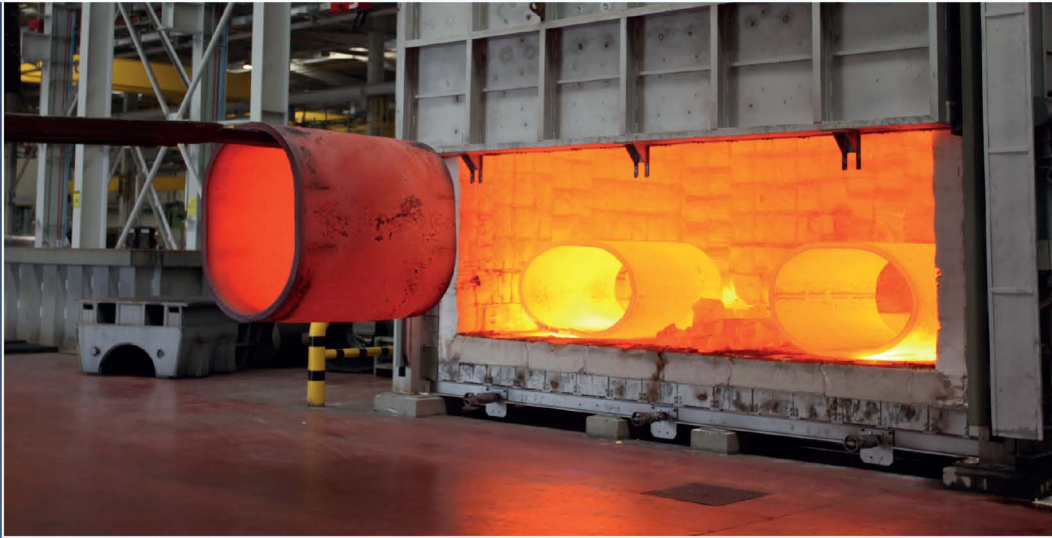


Cold and Induction  
**Bending**



Mechanized  
**Welding**

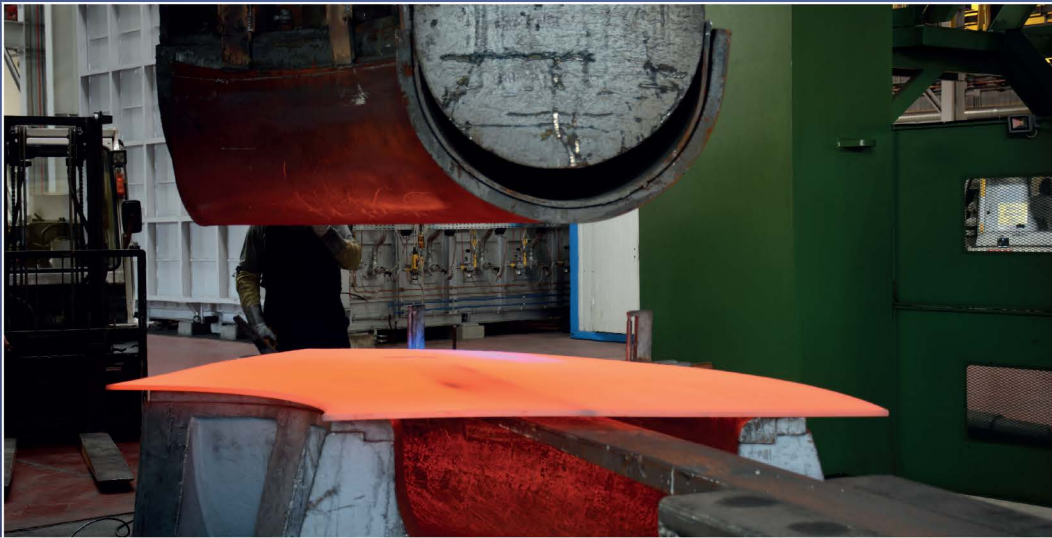




**NORMALIZING**



**VERTICAL DIE**



**2 HALVES**



**TEE FORMING**



WELDING



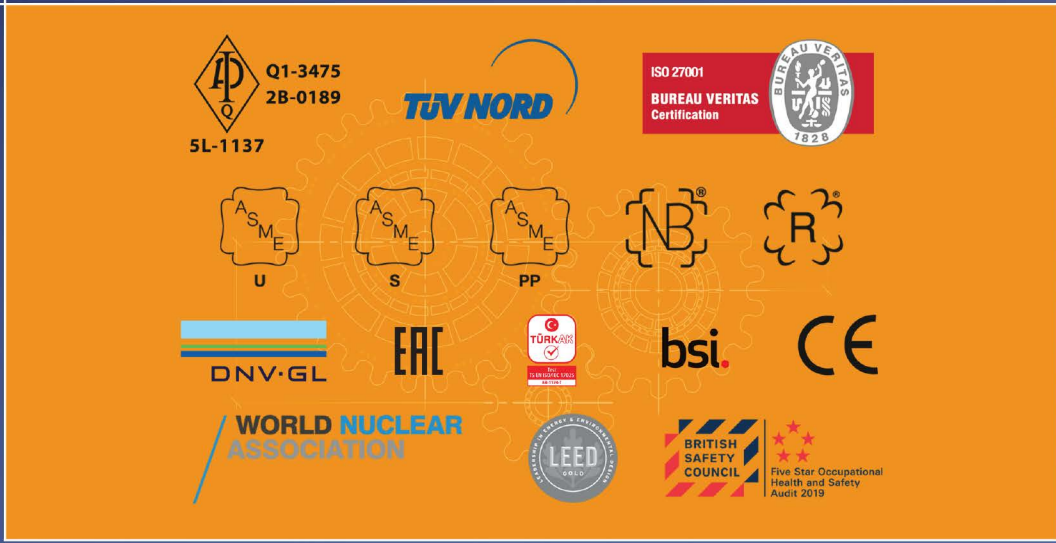
QUENCHING



MACHINING



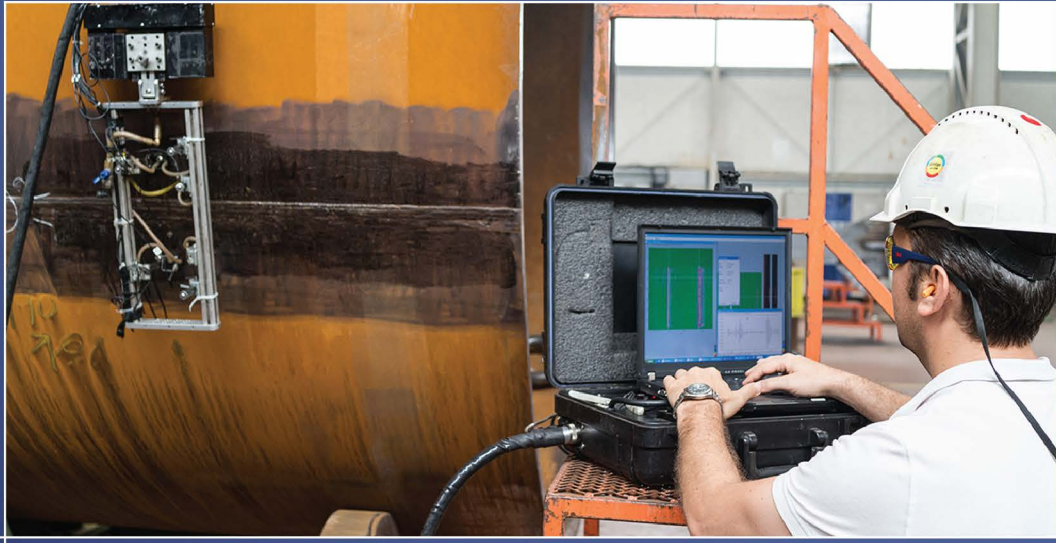
MACHINING



CERTIFIED QUALITY MANAGEMENT SYSTEMS



INDEPENDENT QA&QC ORGANIZATION



IN-HOUSE CERTIFIED NDE PERSONNEL



MECHANICAL & METALLOGRAPHIC TEST LABORATORY

# GROUP COMPANIES

## ÇİMTAŞ STEEL



### Gemlik / Türkiye

Fenced Area : 160,000 m<sup>2</sup>  
Covered Area : 62,000 m<sup>2</sup>  
Number of Employees : 2,000  
Annual Fab. Capacity : 80,000 t

## ÇİMTAŞ SHIPYARD



### Gölcük / Türkiye

Fenced Area : 270,000 m<sup>2</sup>  
Covered Area : 55,000 m<sup>2</sup>  
Number of Employees : 1,400  
Annual Fab. Capacity : 80,000 t

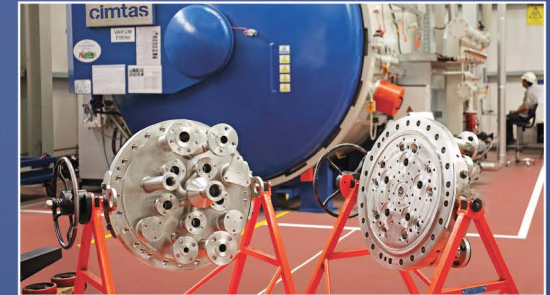
## ÇİMTAŞ NINGBO



### Ningbo / China

Fenced Area : 56,000 m<sup>2</sup>  
Covered Area : 32,000 m<sup>2</sup>  
Number of Employees : 650  
Annual Fab. Capacity : 20,000 t

## ÇİMTAŞ MACHINING



### Gemlik / Türkiye

Fenced Area : 13,000 m<sup>2</sup>  
Covered Area : 12,000 m<sup>2</sup>  
Number of Employees : 300

**FOR MORE**  
**[www.cimtaspipe.com](http://www.cimtaspipe.com)**  
**THANK YOU**

