

## OVERVIEW

2025







400,000t CAPACITY   5,000 EMPLOYEES   ZERO INCIDENT POLICY

ÇİMTAŞ GROUP, a subsidiary of ENKA, having with an aggregated annual capacity of 400,000 tons, provides engineering, procurement, fabrication, machining, modularization, erection and installation services to the leading customers of construction, power, oil, gas and chemicals industries.



# COMPANY STRUCTURE

**ENKA**

cimtas | steel

cimtas | pipe

cimtas | shipyard

cimtas | ningbo

cimtas | machining



More than **580** Projects in **57** Countries  
More than **63 Billion USD** Historical Contract Value

**54<sup>th</sup>** @ ENR Top 250 International Contractors List - 2024  
More than **20,000** Employees

**ENKA**



OIL, GAS & PETROCHEMICALS



POWER PLANTS



INFRASTRUCTURE



BUILDING WORKS



# cimtas | steel

80,000 t ZERO  
CAPACITY INCIDENT POLICY

📍 Gemlik / Türkiye  
160,000 m<sup>2</sup>

ÇİMTAŞ STEEL, being the flagship company of ÇİMTAŞ GROUP; provides engineering, welded fabrication, modularization and installation services to the leading customers of construction, power, oil, gas, chemicals and offshore industries.

A subsidiary of **ENKA**





# cimtas | pipe

**3 Million DIA"**  
SPOOL FABRICATION  
CAPACITY

**100,000 t**  
LSAW PIPE  
CAPACITY

**6,000 t**  
FITTINGS  
CAPACITY

  
Gemlik FTZ / Türkiye  
120,000 m<sup>2</sup>

CİMTAS PIPE is a market-leading company providing engineering, procurement, manufacturing of LSAW pipes and fittings, fabrication of pipe spools for power, oil, gas and nuclear industry with the best in class vision.



# cimtas | shipyard

**80,000 t**  
FABRICATION  
CAPACITY

**70,000 t**  
ASSEMBLY  
CAPACITY

  
Kocaeli FTZ / Türkiye  
270,000 m<sup>2</sup>

ÇİMTAŞ SHIPYARD fabricates structural steel, steel wind towers, offshore & subsea structures, modules and sea vessels at its facility having vast assembly yards and a self-quay for direct sea transportation.





cimtas | ningbo

**1.5 Million DIA"**  
SPOOL FABRICATION  
CAPACITY

**6,000 t**  
SKID & MODULES  
ASSEMBLY CAPACITY

  
Ningbo FTZ / China  
56,000 m<sup>2</sup>

CIMTAS NINGBO provides process & OEM piping, skid-mounted process assemblies and modularization solutions to power, oil & gas and petrochemical industries.



# cimtas | machining



7 NADCAP 5 MERIT 200,000 HOURS  
5 AXIS MACHINING

📍 Gemlik FTZ / Türkiye  
13,000 m<sup>2</sup>

ÇİMTAŞ MACHINING is the most technologically advanced member of ÇİMTAŞ GROUP; providing complex gas turbine parts & modules to the leading OEMs of both the power and aerospace industries.





STRUCTURAL  
STEEL



PRESSURIZED  
EQUIPMENT



STEEL  
WIND TOWERS



INSTALLATION



OFFSHORE  
STRUCTURES



MODULARIZATION



SHIPBUILDING &  
POWERSHIPS



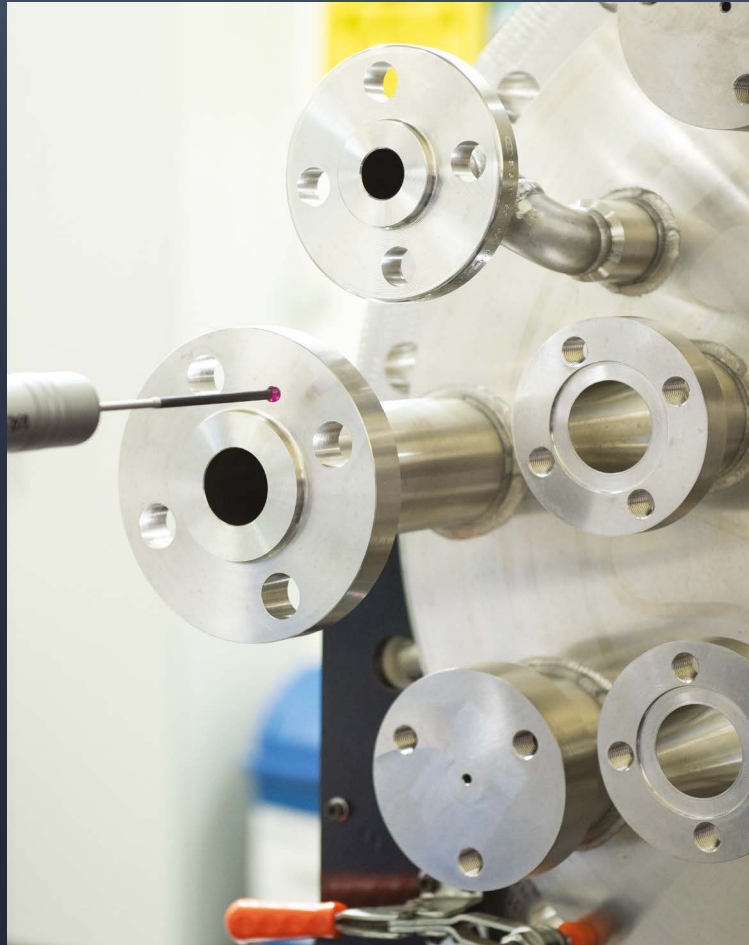
SPOOLS



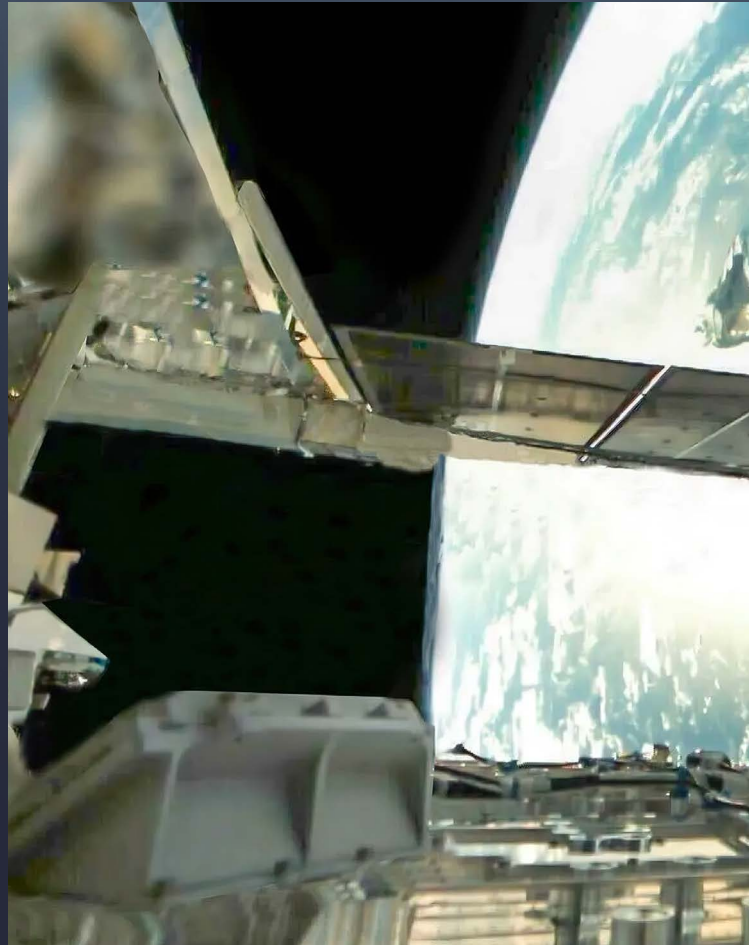
FITTINGS



LSAW PIPES



GAS TURBINE  
COMPONENTS



SATELLITE  
COMPONENTS





HIGH RISES



STEEL BRIDGES



POWER, OIL & GAS PLANTS



INDUSTRIAL PLANTS



AIRPORTS



STADIUMS





TCO FUTURE GROWTH PROJECT

Kazakhstan



ICA FLUOR PROJECT

Mexico



ANGOLA LNG

Angola



PEMEX PRESSURE VESSELS

Mexico





8 m DIAMETER



300 t SECTION WEIGHT



35 m LENGTH



25 COUNTRIES





İZMİR-GEBZE-ADAPAZARI CCPP 3,850 MW

Türkiye



WALSUM COAL FIRED POWER PLANT 800 MW

Germany



RIJNMOND CCPP 770 MW

The Netherlands



SECOND GENERATION PROJECT 25 Million t

Kazakhstan





SAKARYA GAS FIELD DEVELOPMENT PROJECT



Türkiye

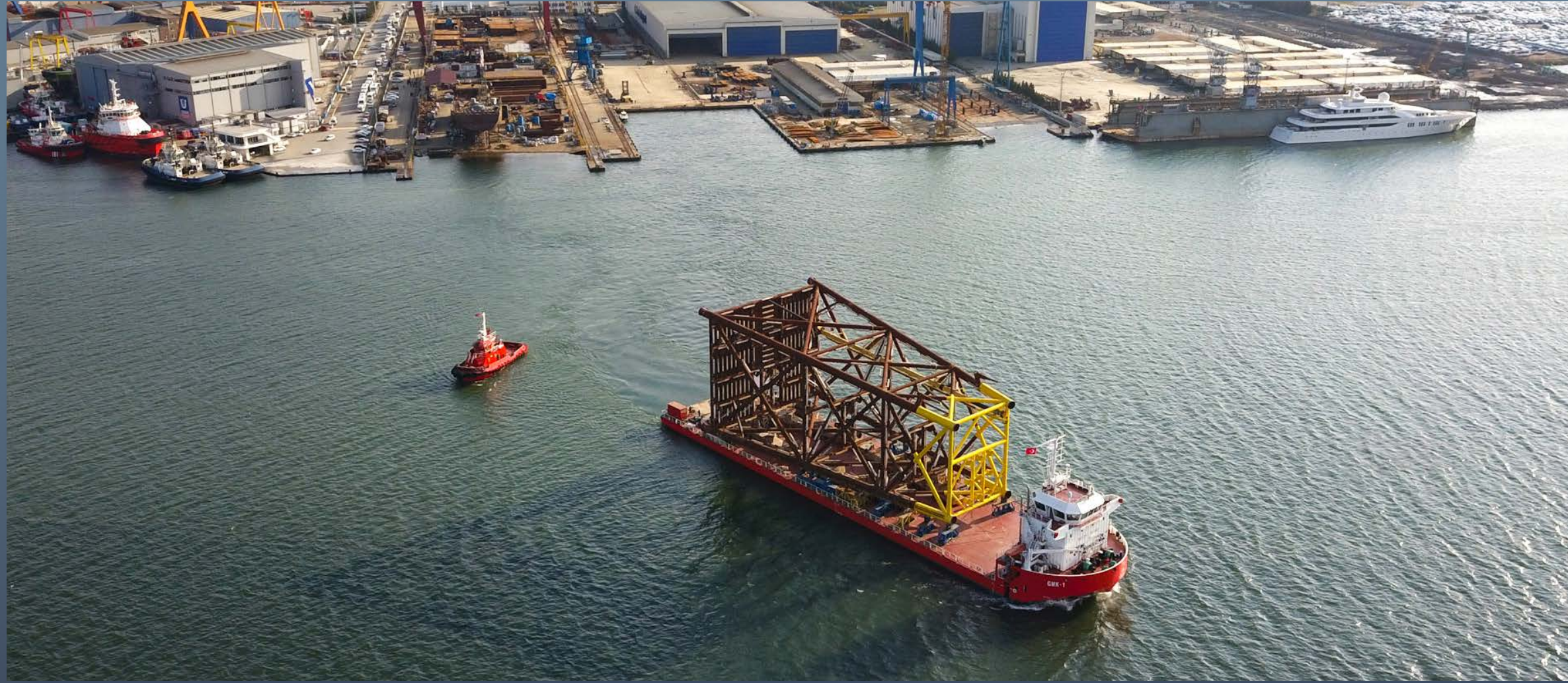


SAKARYA GAS FIELD DEVELOPMENT PROJECT



Türkiye



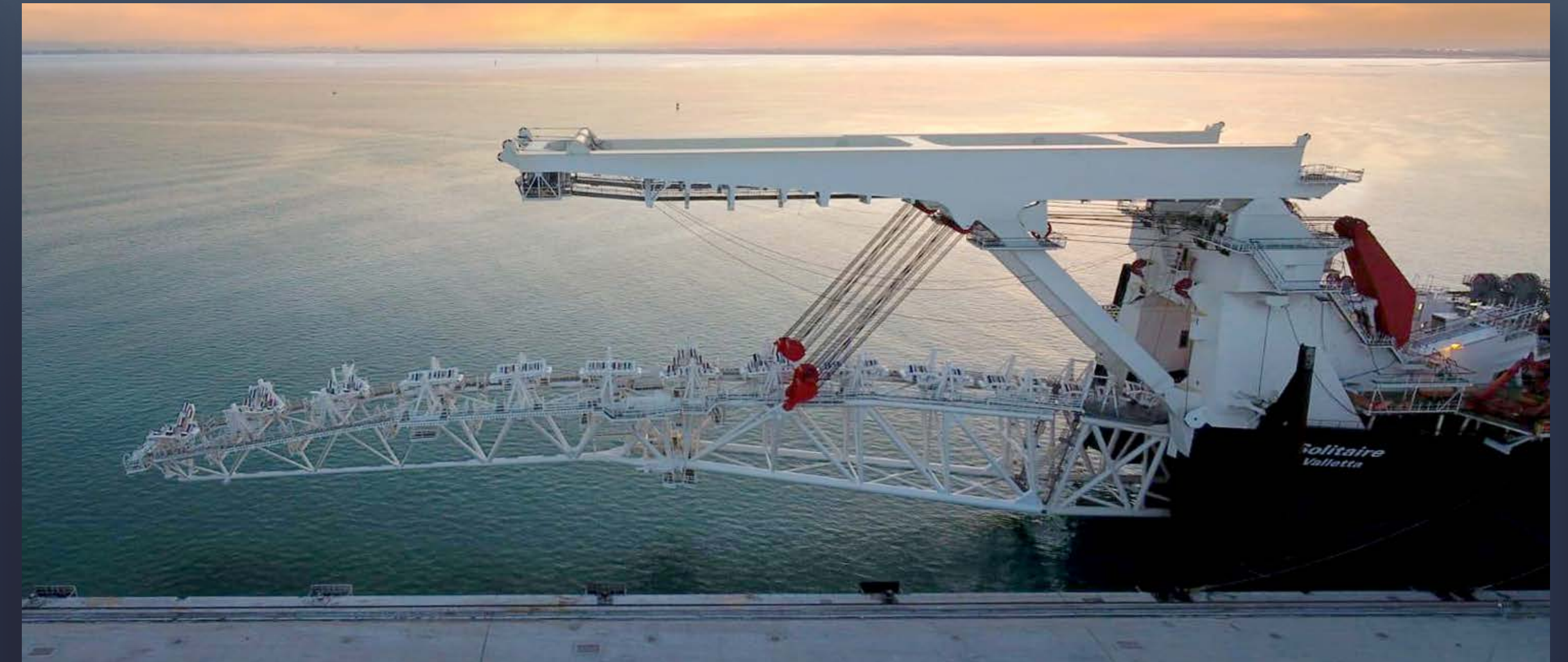


KUZEY MARMARA UNDERGROUND GAS STORAGE EXPANSION PROJECT

Türkiye



STINGER SECTION PROJECT



The Netherlands





WEST QURNA PROJECT



SECOND GENERATION PROJECT



PETROBRAZI PLANT CCR



POLY BED HYDROGEN PURIFICATION SKID

Romania

Kazakhstan

Russia





KPS6 POWERSHIP

Türkiye



KPS9 POWERSHIP

Türkiye



GMK-1 DYNAMIC POSITIONING SERVICE VESSEL

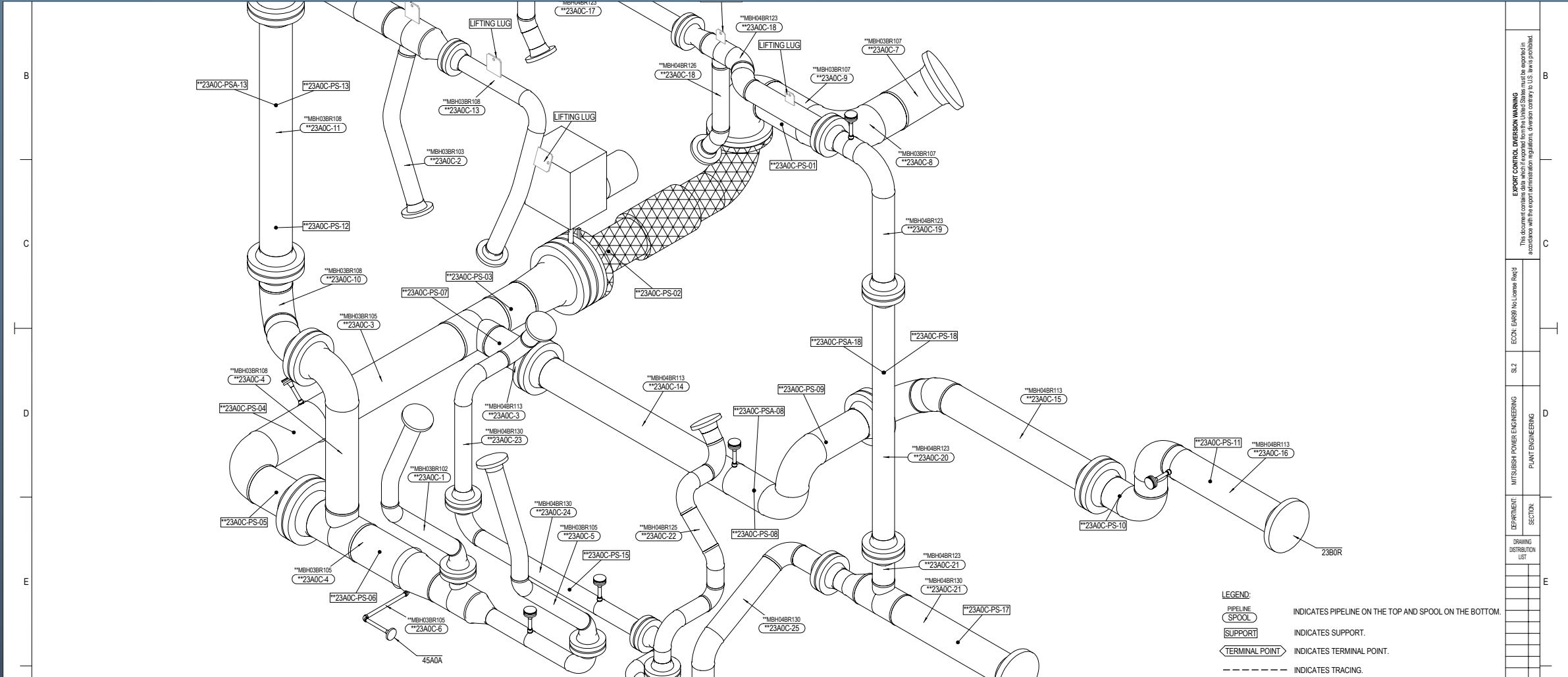
Türkiye



SOLEY-4

Türkiye





ENGINEERING

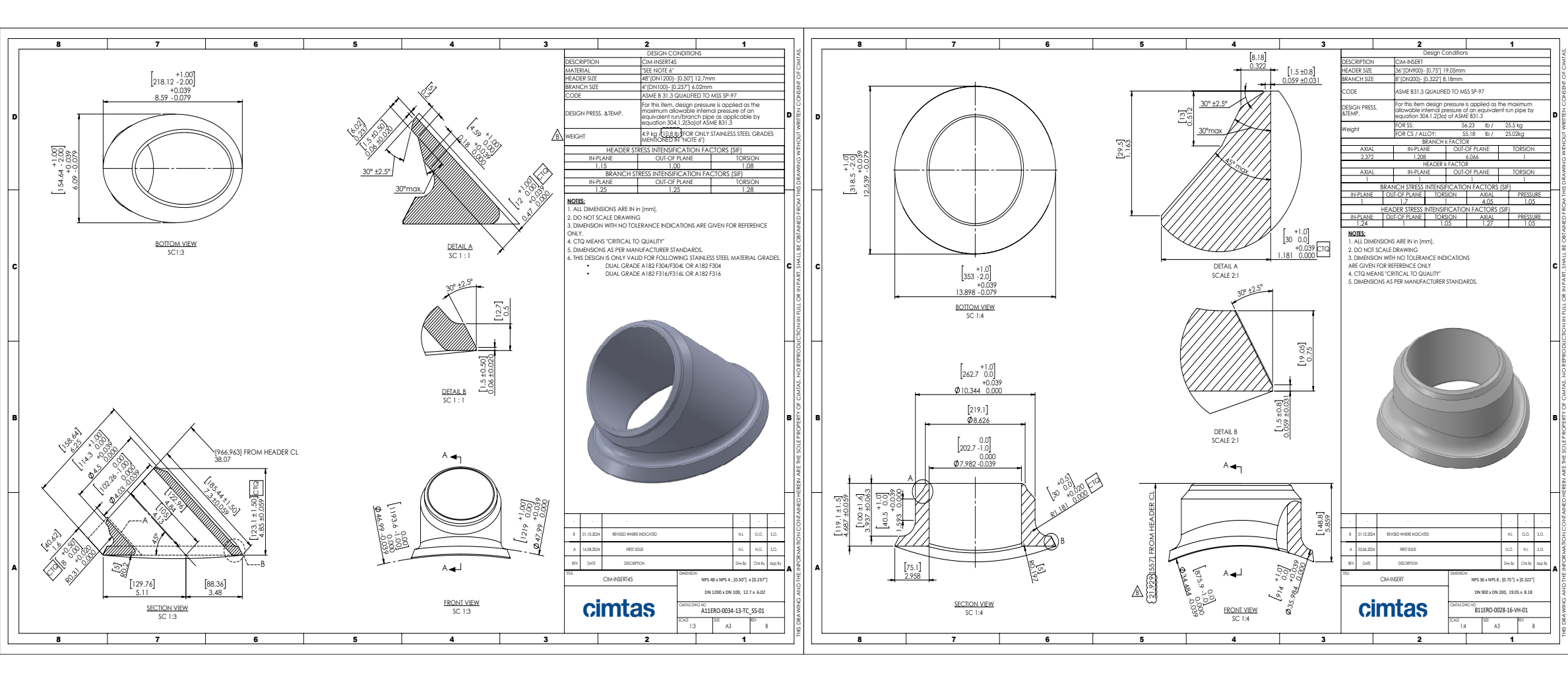
FABRICATION



PACKAGING

TRANSPORTATION





ENGINEERING

HOT FORMING

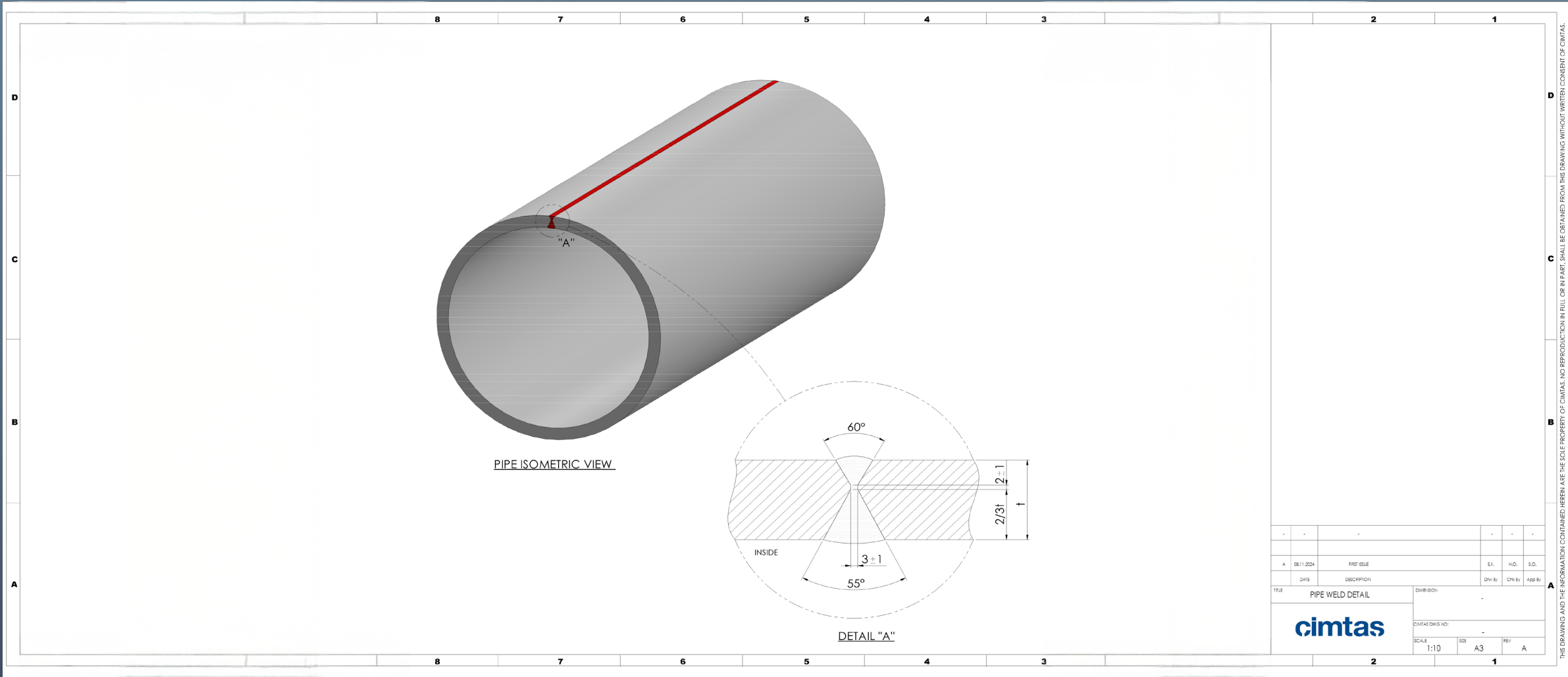


INDUCTION BENDING



TEES





ENGINEERING

FABRICATION



JCO FORMING

HEAT TREATMENT





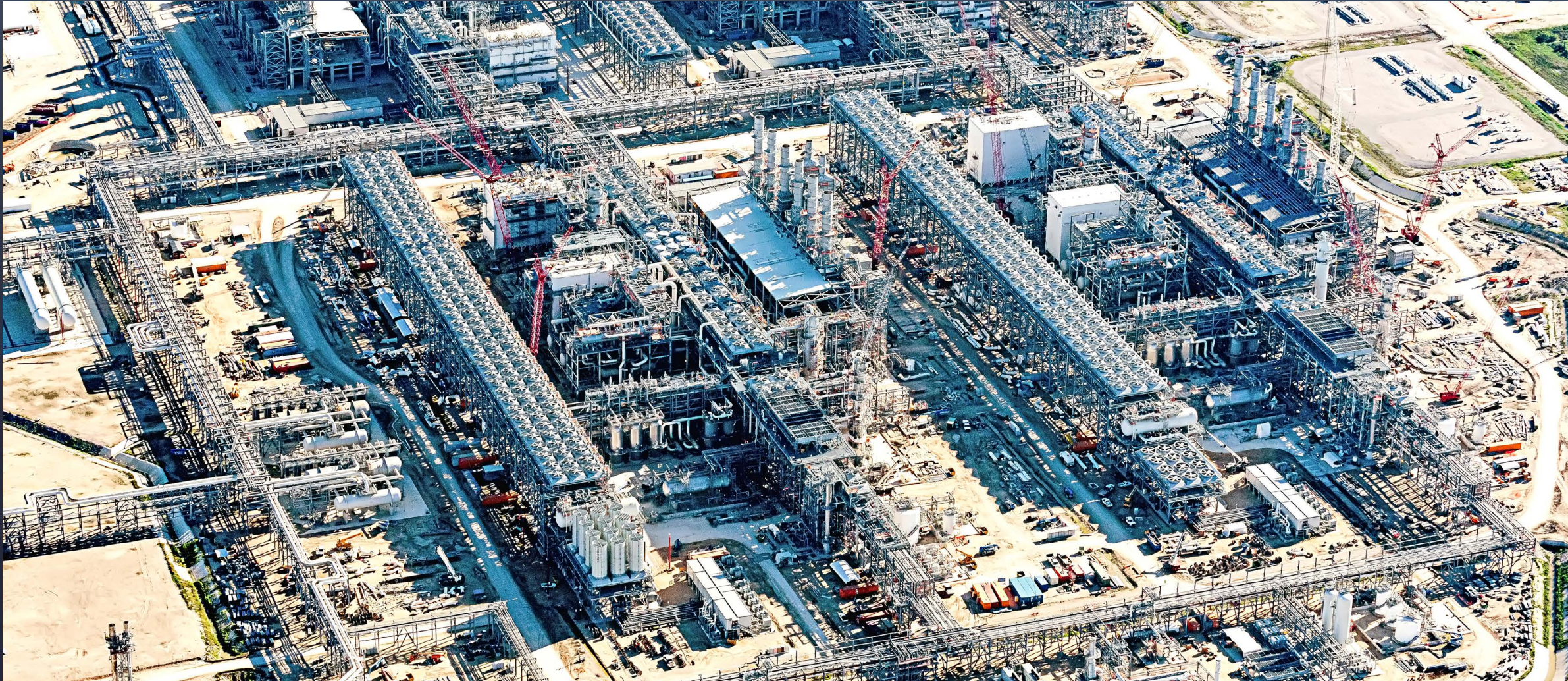
IFOP STAR REFINERY

Türkiye



AUSTRALIA PACIFIC LNG

Australia



SABINE PASS LNG

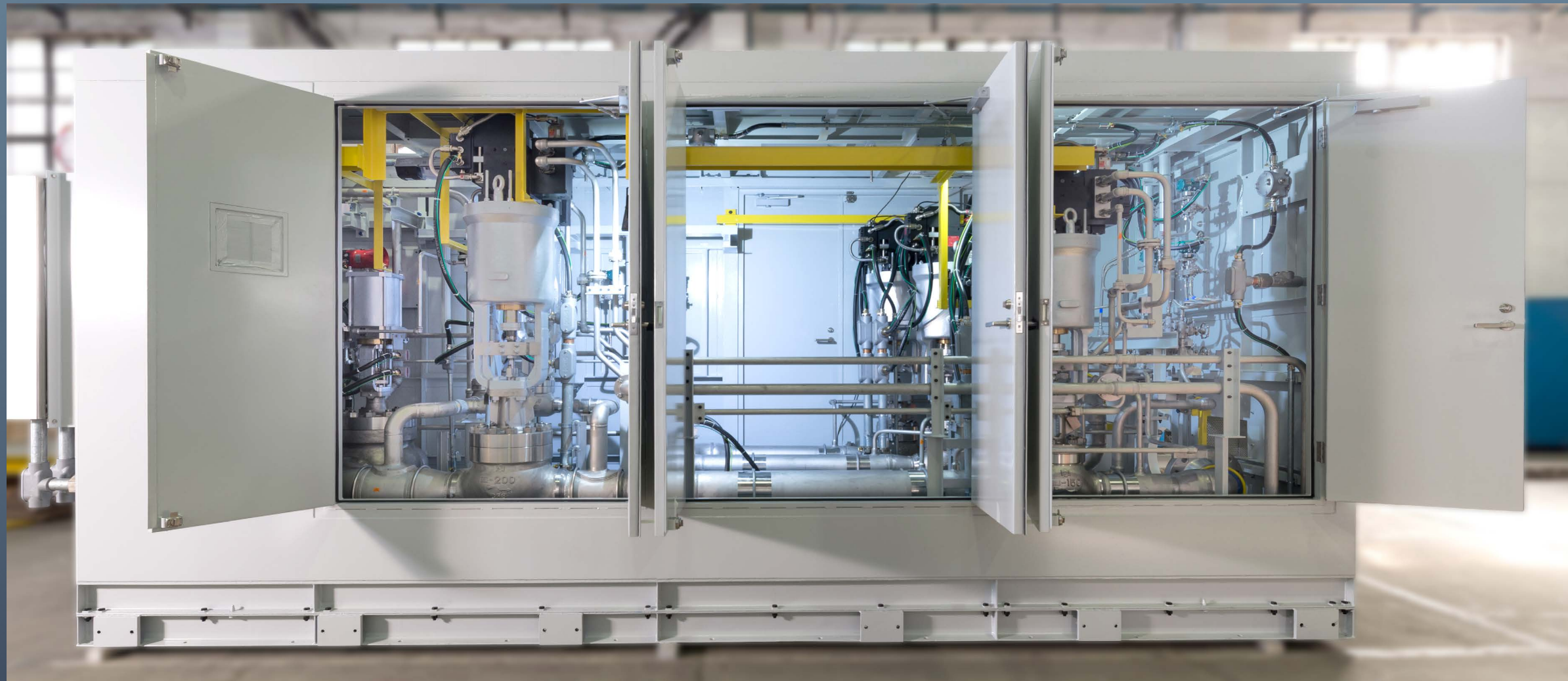
USA



CORPUS CHRISTI LNG

USA





MITSUBISHI POWER M701 F4 FUEL GAS SKID



MITSUBISHI POWER FUEL GAS SKID

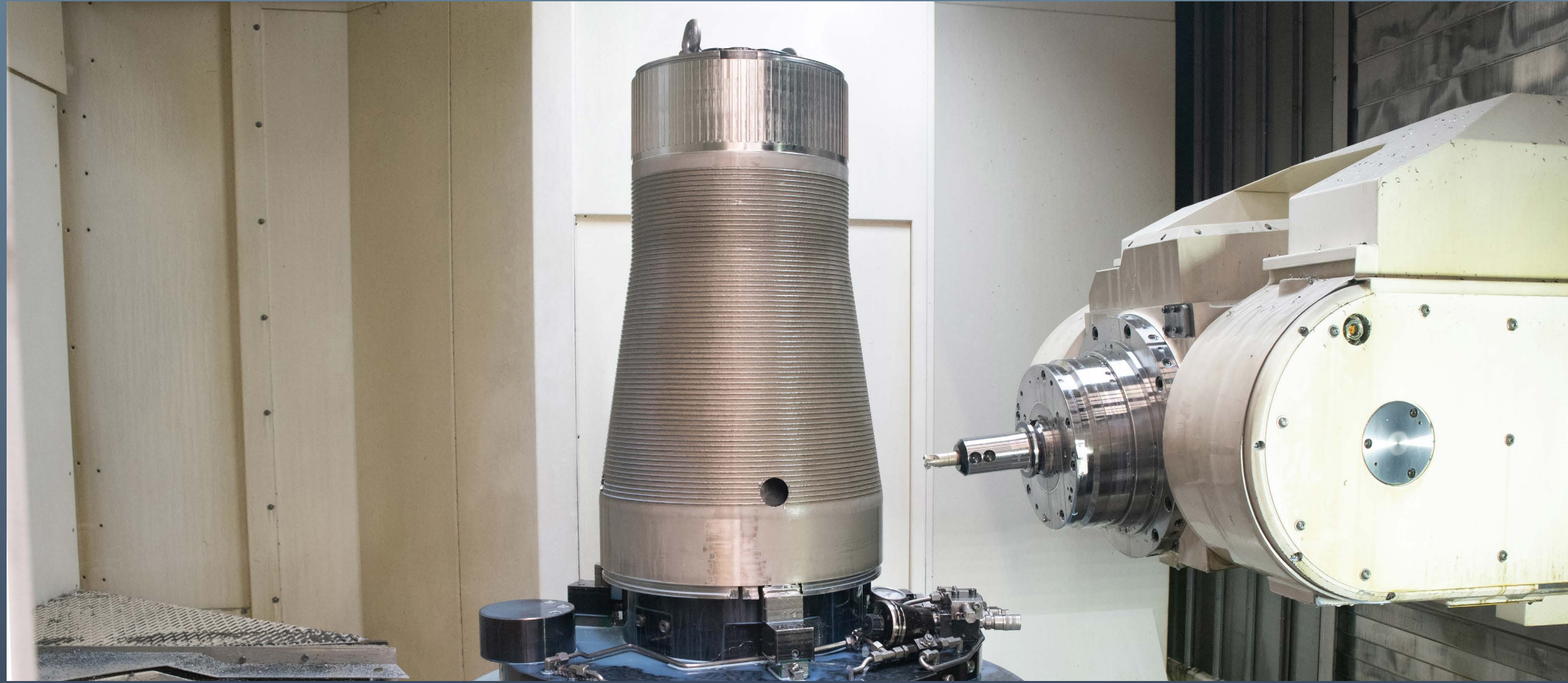


MITSUBISHI POWER M701 F4 FUEL GAS SKID

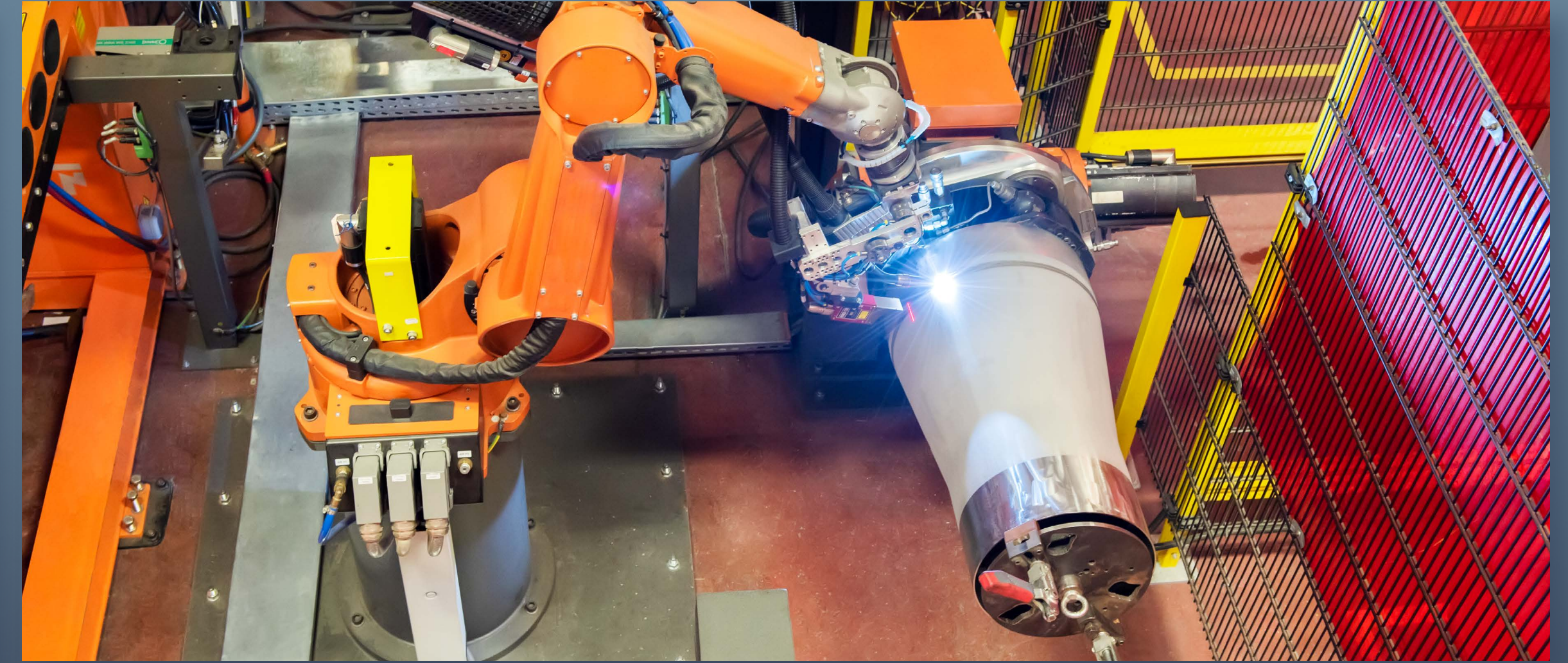


GENERAL ELECTRIC A160 SKID

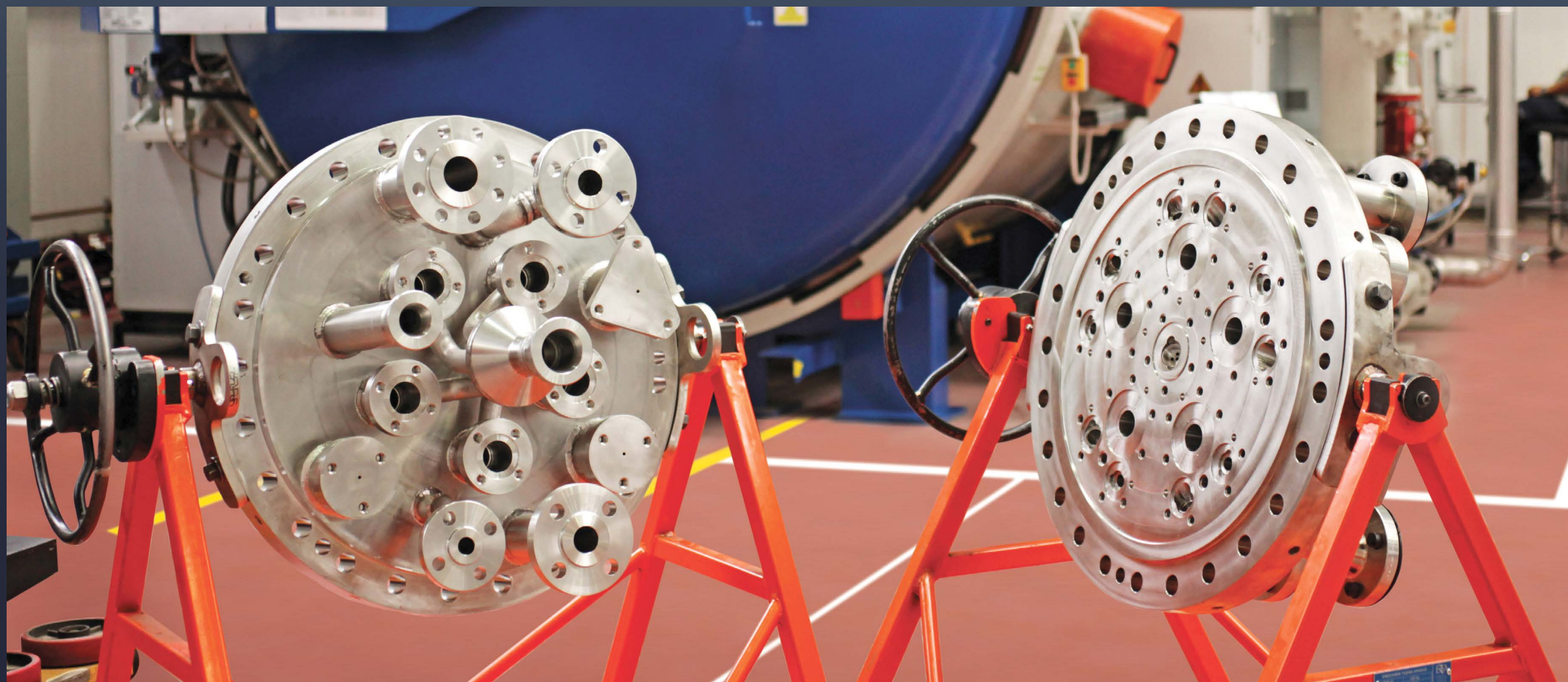




COMBUSTION LINER ASSEMBLY



POWER - COMBUSTION COMPONENTS



COMBUSTION END COVER ASSEMBLY

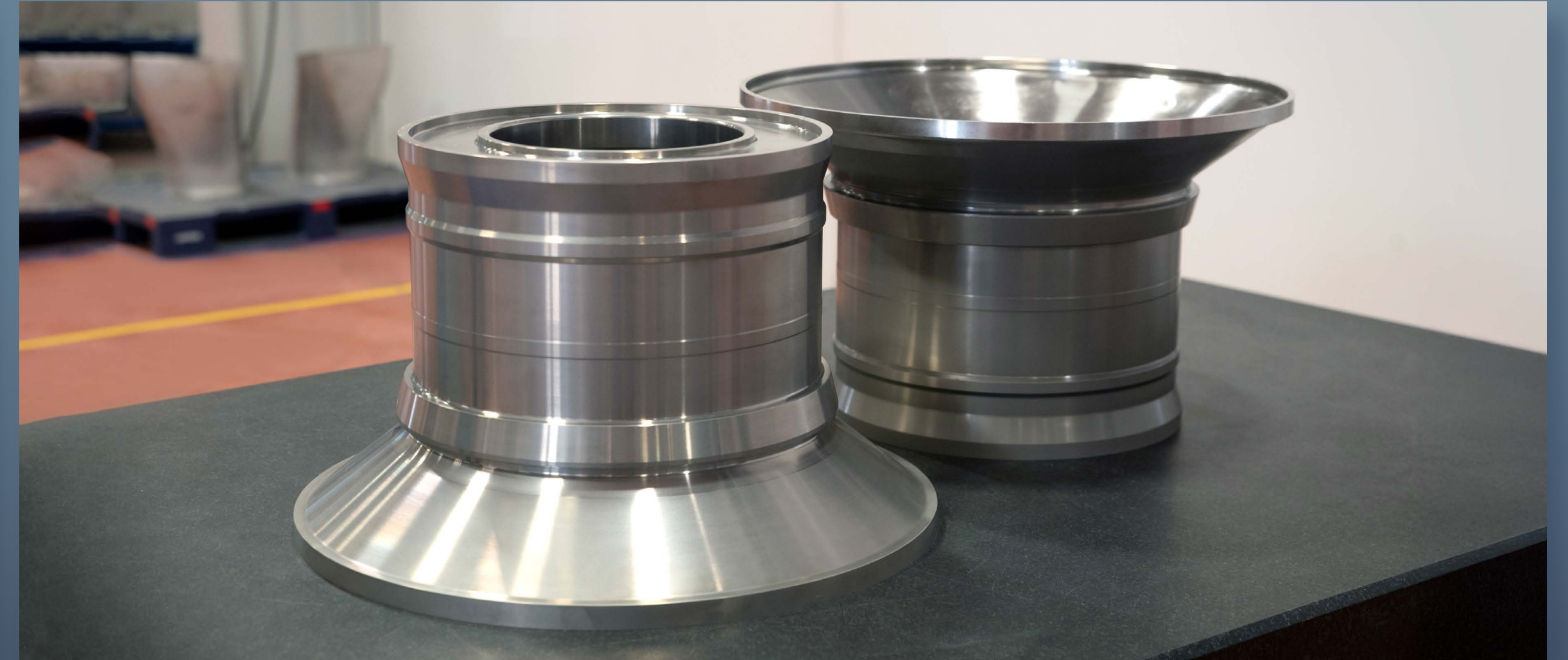


COMBUSTION OUTER CAP ASSEMBLY

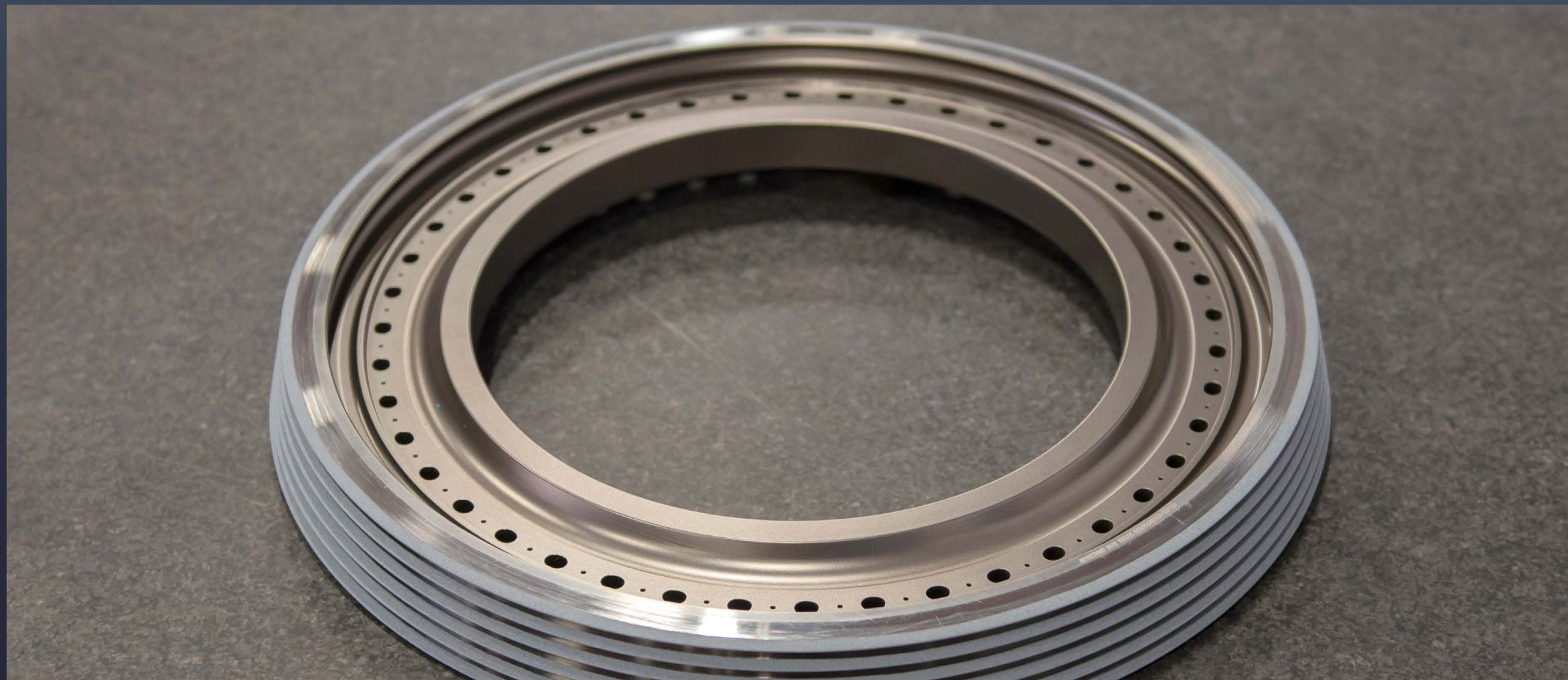




HIGH PRESSURE ROTATING SEAL - CF 6



HIGH PRESSURE COMPRESSOR CONE - TRENT XWB



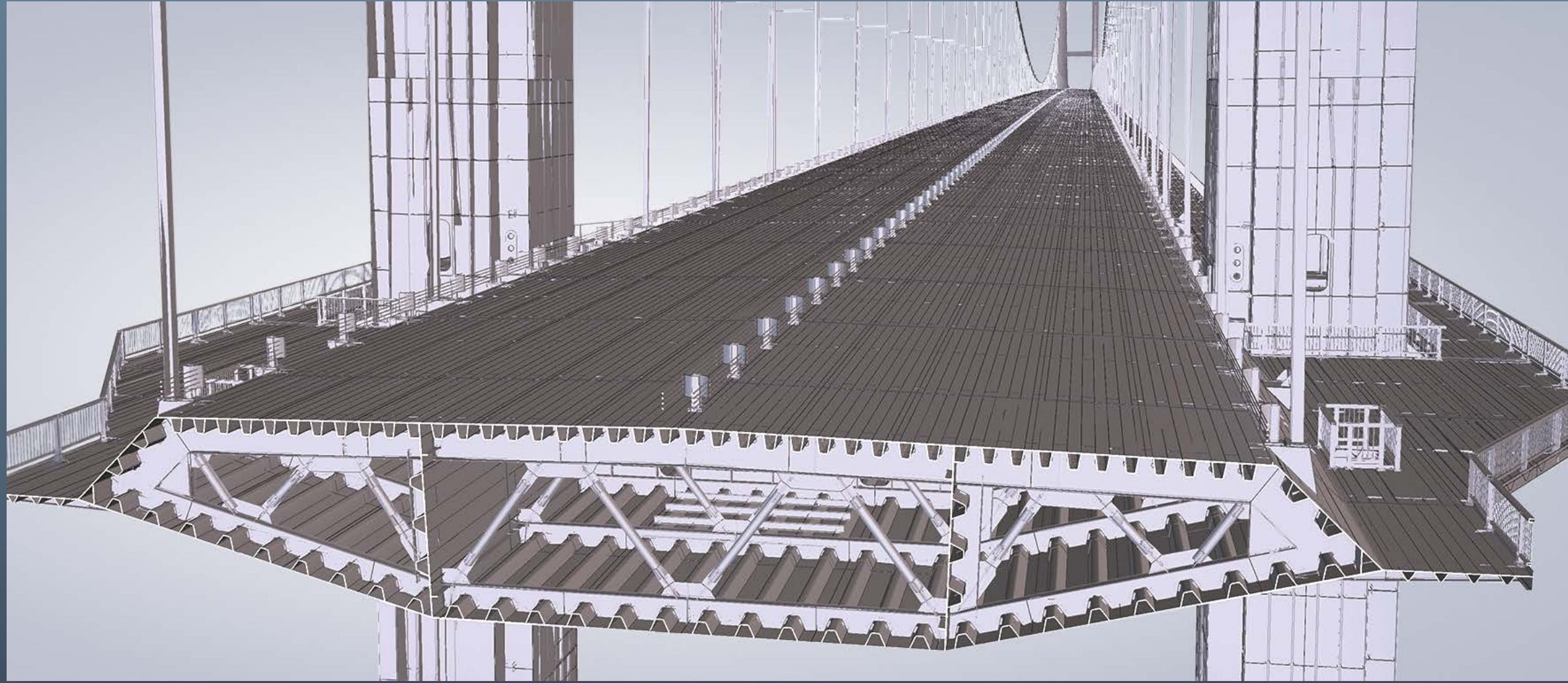
HIGH PRESSURE COMPRESSOR ROTATING SEAL



AIRCRAFT STRUCTURAL COMPONENTS



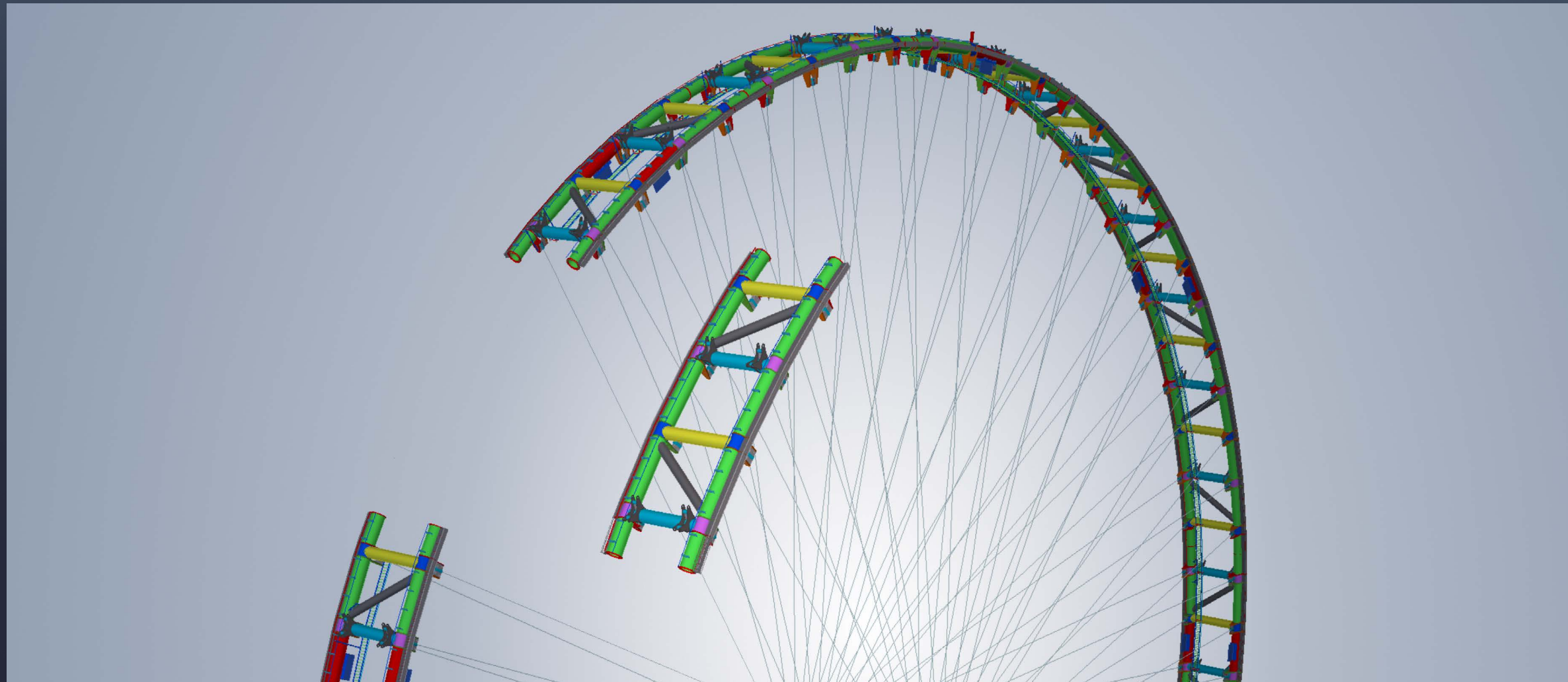
# STRUCTURAL ENGINEERING



OSMANGAZI SUSPENSION BRIDGE 3D MODEL



1915 ÇANAKKALE SUSPENSION BRIDGE 3D MODEL



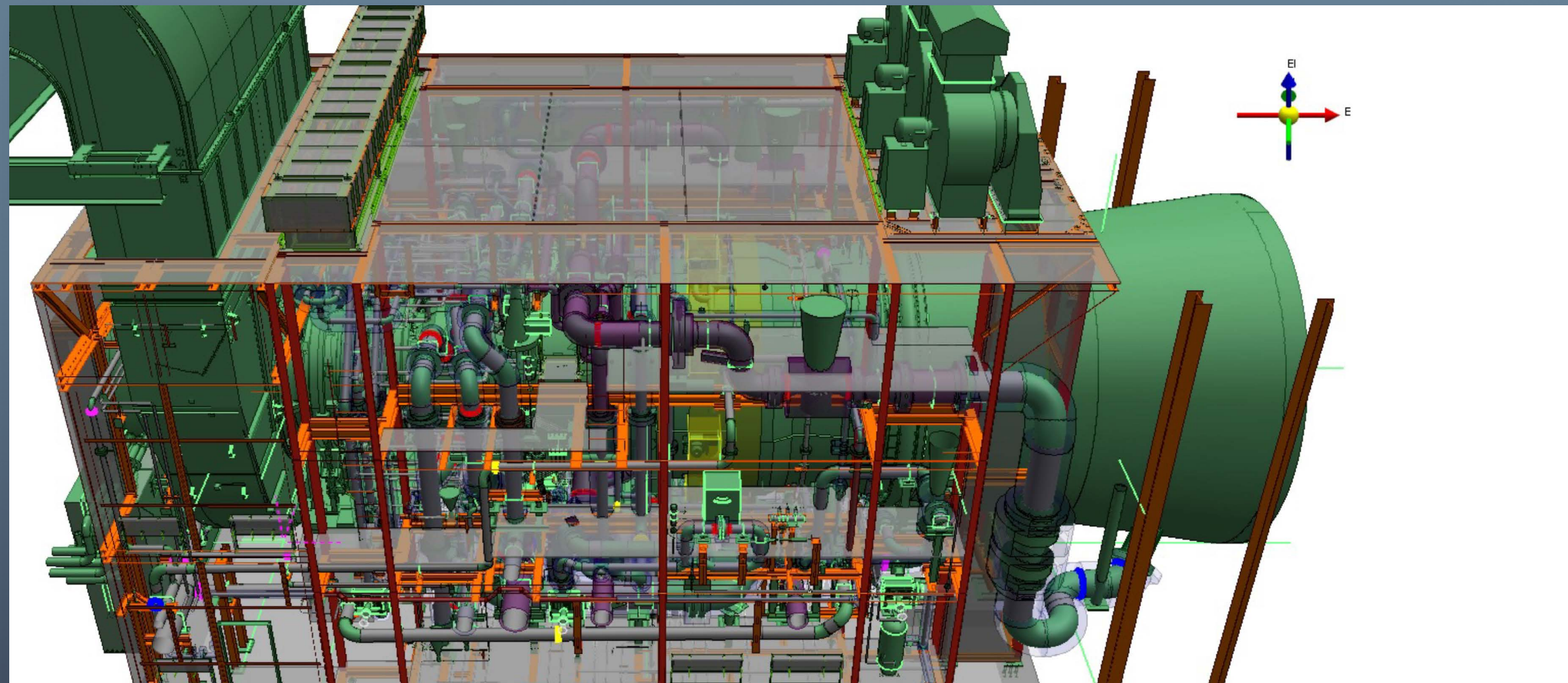
NEW YORK FERRIS WHEEL 3D MODEL



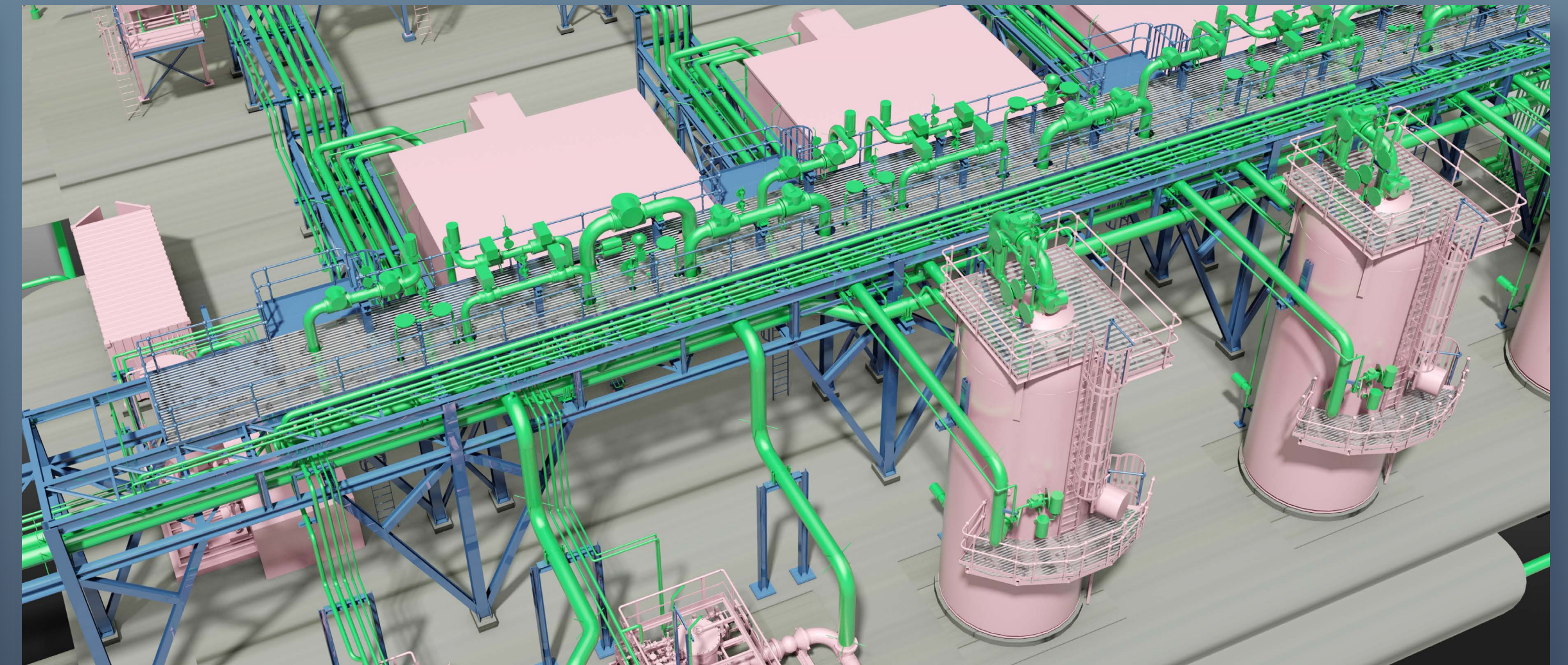
MAKKAH CLOCK TOWER 3D MODEL



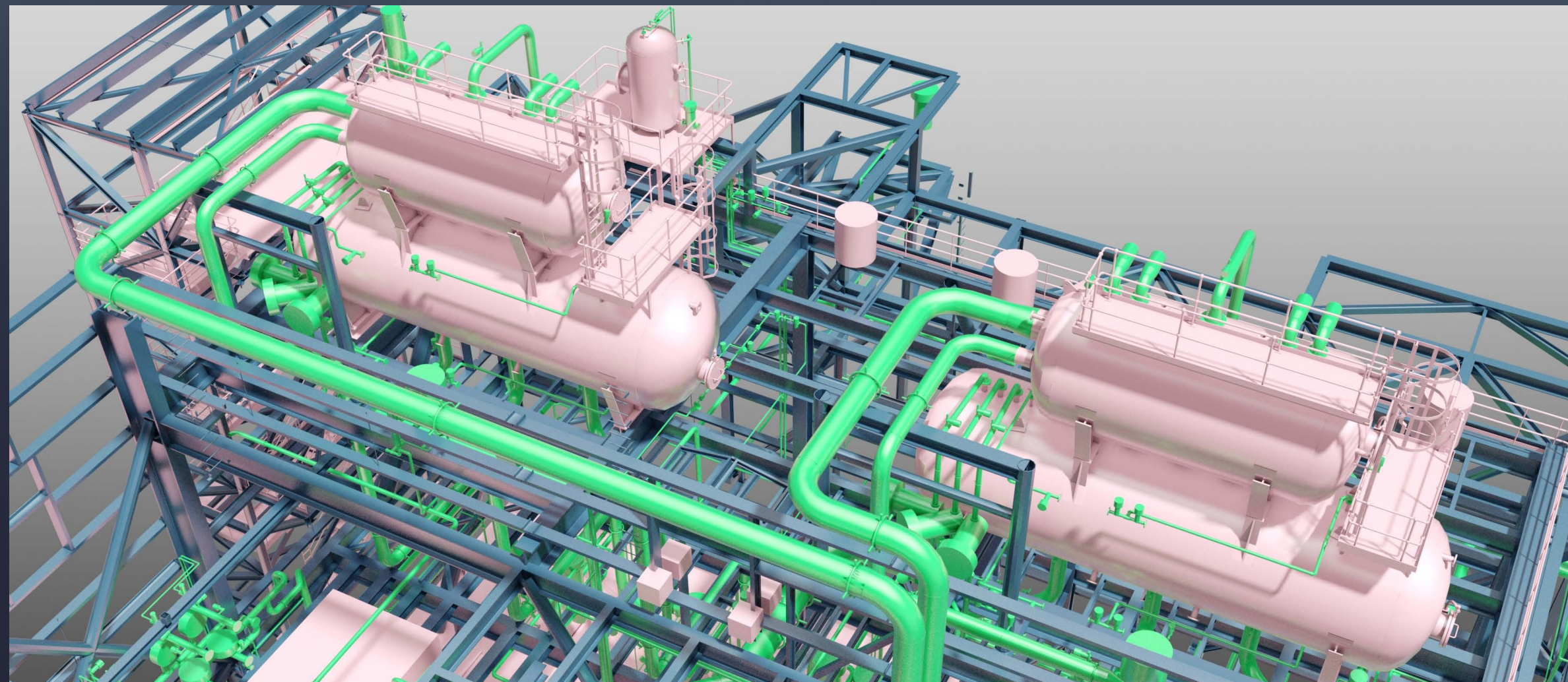
# PLANT DESIGN & ENGINEERING



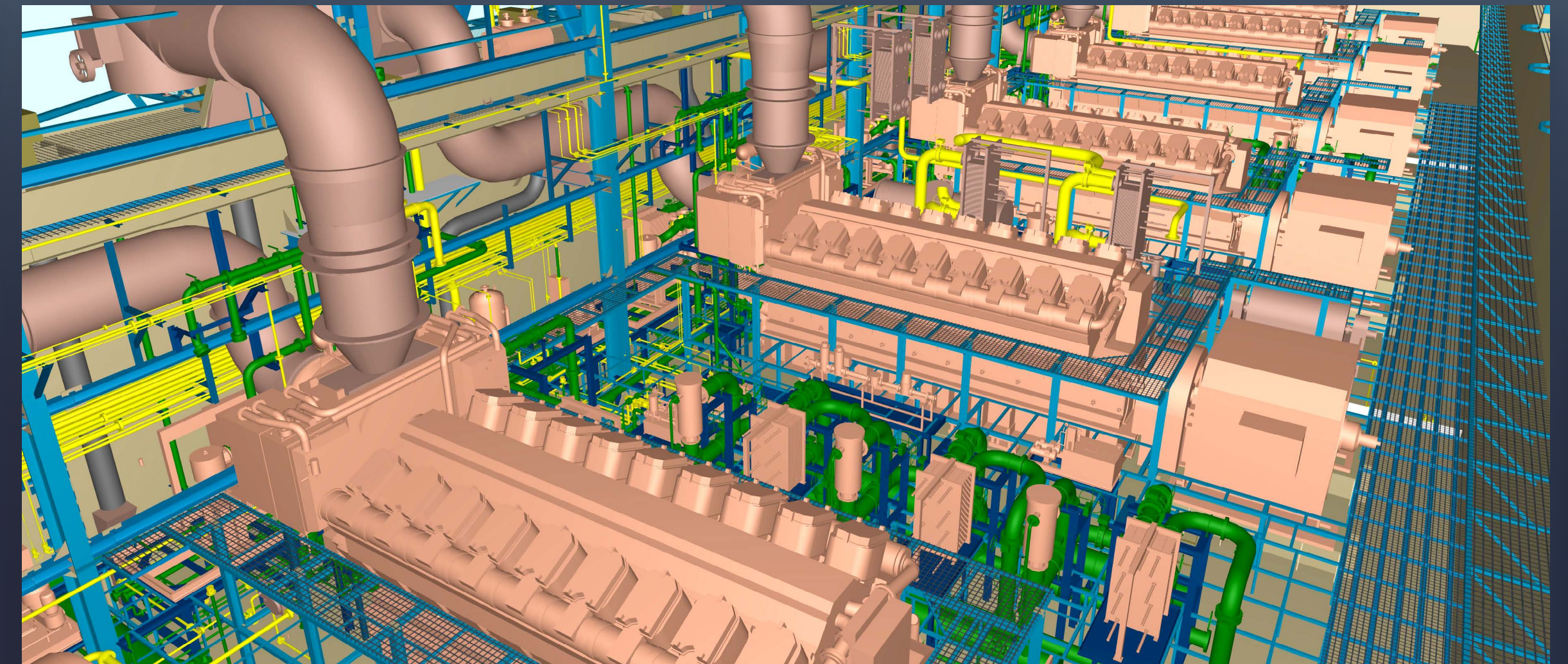
MHI GAS TURBINE MODULAR ENCLOSURE



WEST QURNA-2 OILFIELD



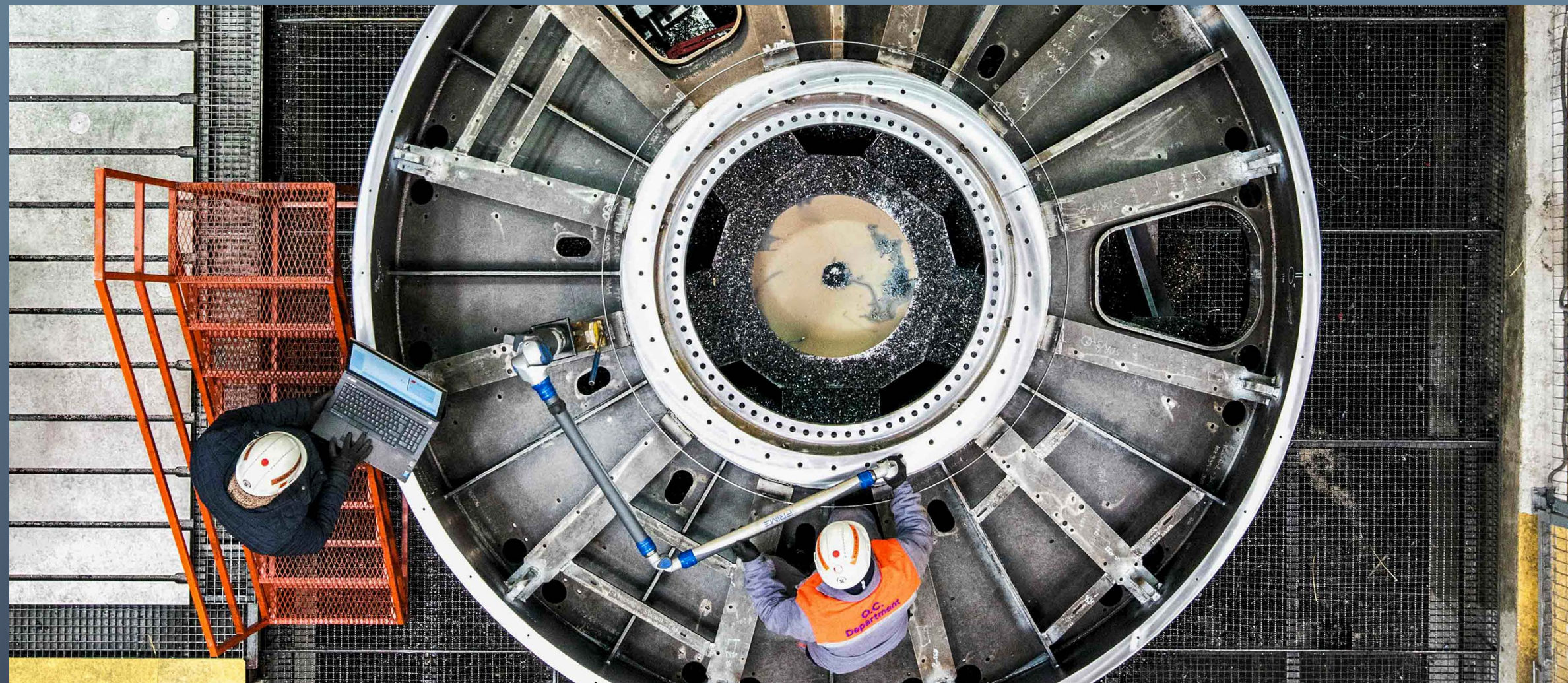
BAZYAN CCPP



KPS-6 POWERSHIP



# FABRICATION & MACHINING



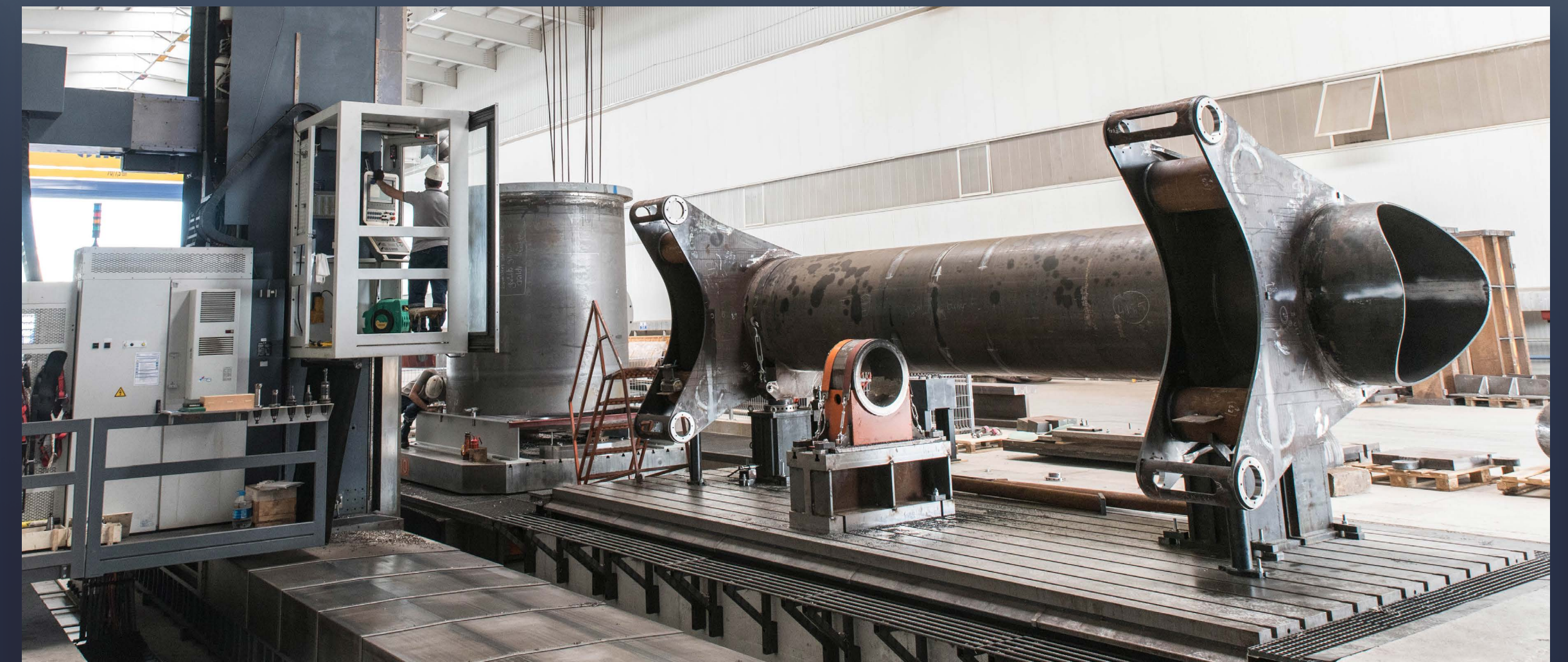
ENERCON ROTOR



ENERCON STATOR



MAMMOET USA



NEW YORK FERRIS WHEEL



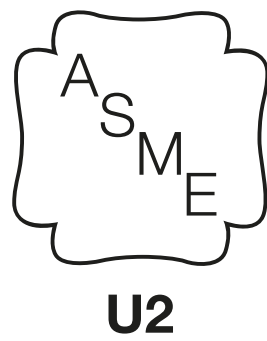
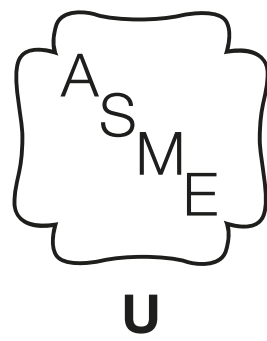
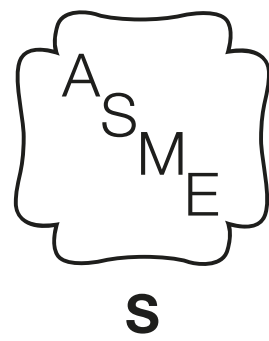
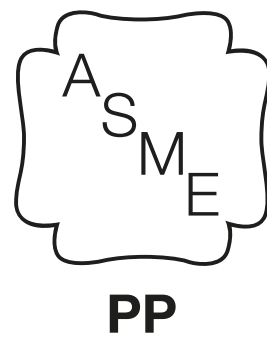
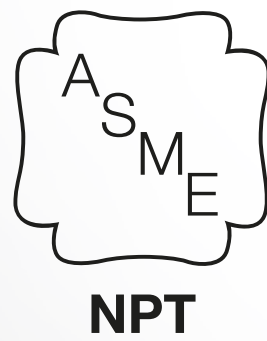
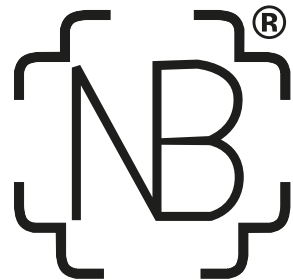
# CERTIFICATES



EN ISO 3834-2



EN ISO 1090-2





# LOGISTICS



OSMANGAZİ SUSPENSION BRIDGE



STINGER SECTION PROJECT



TCO FUTURE GROWTH PROJECT



1915 ÇANAKKALE SUSPENSION BRIDGE



# LOGISTICS



ÇİMTAŞ SHIPYARD

Gölcük / Türkiye



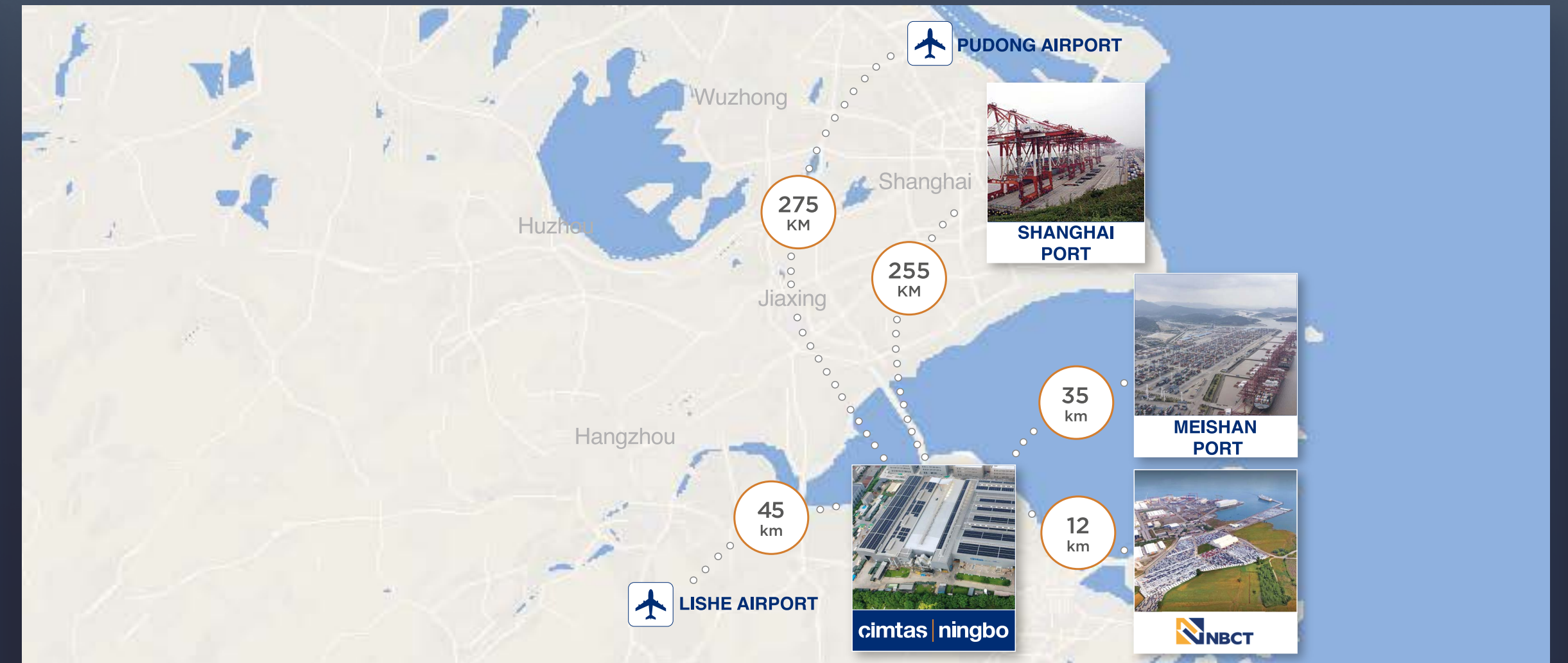
ÇİMTAŞ STEEL

Gemlik / Türkiye



ÇİMTAŞ PIPE - ÇİMTAŞ MACHINING

Gemlik / Türkiye



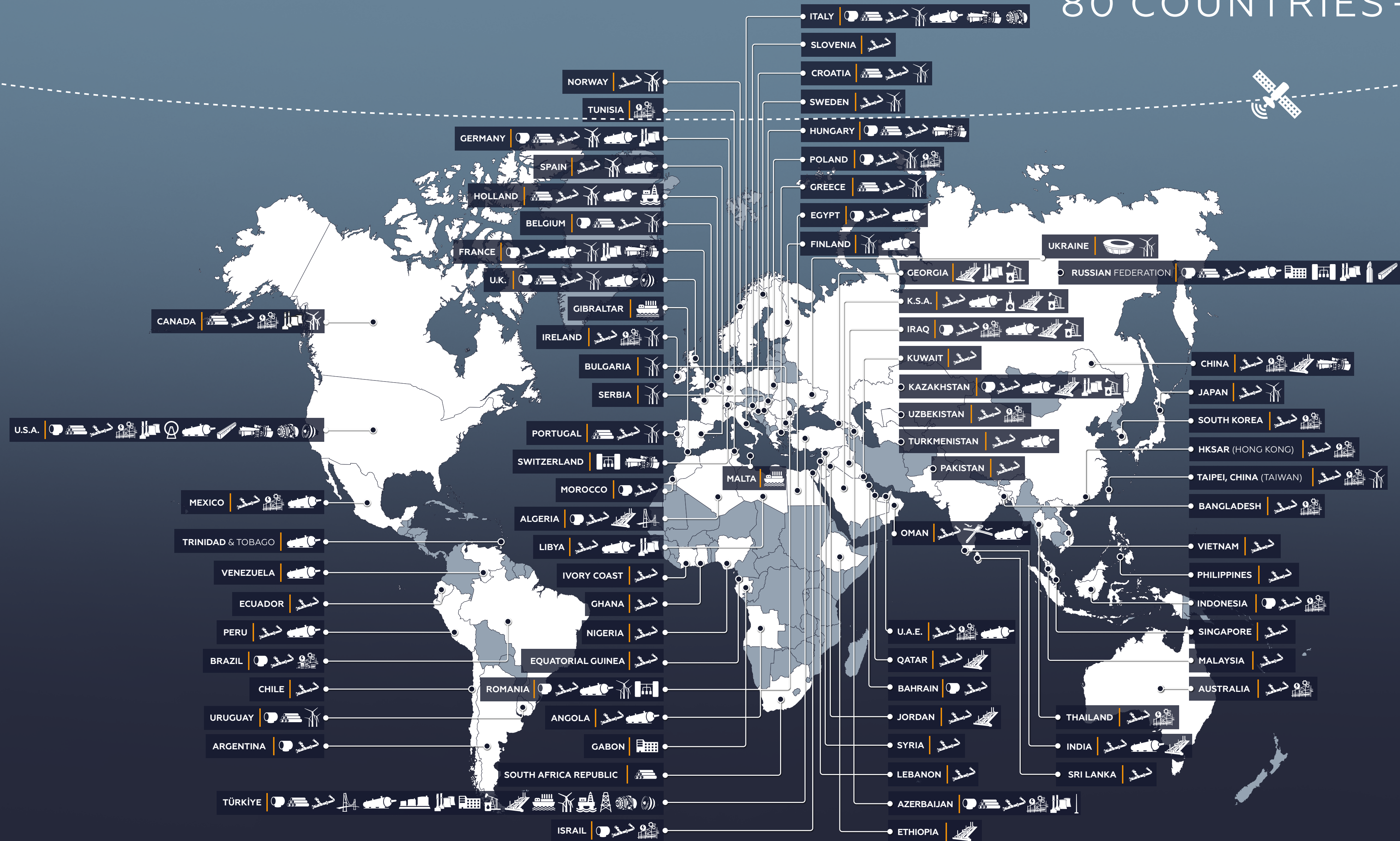
ÇİMTAŞ NINGBO

Ningbo / China



# WORLDWIDE PROJECTS

80 COUNTRIES + ORBIT.





GROUP COMPANIES	PRODUCTS & ABILITIES	
<div><div>cimtas   steel</div><div>Gemlik / Türkiye</div></div>	<ul style="list-style-type: none"><li>• STRUCTURAL STEEL</li><li>• PRESSURIZED EQUIPMENT</li><li>• OFFSHORE STRUCTURE</li></ul>	<ul style="list-style-type: none"><li>• STEEL WIND TOWER &amp; COMPONENTS</li><li>• MODULARIZATION</li><li>• STRUCTURAL ENGINEERING</li></ul>
<div><div>cimtas   pipe</div><div>Gemlik / Türkiye</div></div>	<ul style="list-style-type: none"><li>• SPOOL FABRICATION</li><li>• PIPE MANUFACTURING</li></ul>	<ul style="list-style-type: none"><li>• FITTING MANUFACTURING</li><li>• PLANT ENGINEERING</li></ul>
<div><div>cimtas   shipyard</div><div>Kocaeli / Türkiye</div></div>	<ul style="list-style-type: none"><li>• STRUCTURAL STEEL</li><li>• OFFSHORE STRUCTURE</li><li>• FLOATING STRUCTURE</li></ul>	<ul style="list-style-type: none"><li>• SHIPBUILDING</li><li>• STEEL WIND TOWER</li><li>• XL MODULARIZATION</li></ul>
<div><div>cimtas   ningbo</div><div>Ningbo / China</div></div>	<ul style="list-style-type: none"><li>• SPOOL FABRICATION</li><li>• MODULARIZATION</li></ul>	<ul style="list-style-type: none"><li>• SKID</li><li>• INSTALLATION</li></ul>
<div><div>cimtas   machining</div><div>Gemlik / Türkiye</div></div>	<ul style="list-style-type: none"><li>• 5 AXIS PRECISION MACHINING</li><li>• ELECTRON BEAM WELDING</li><li>• THERMAL SPRAY COATING</li></ul>	<ul style="list-style-type: none"><li>• VACUUM HEAT TREATMENT</li><li>• ROBOTIC LASER WELDING &amp; CUTTING</li><li>• CHEMICAL PROCESSING</li></ul>



# SUSTAINABILITY

Çimtaş, along with the efforts to attain its wide-range social and economic sustainability goals, is striving to reduce its environmental footprint with all solar-powered facilities, paperless processes and responsible water & waste management approach; and by caring for an olive yard with a tree for each of its employees, a special olive kind awarded with protected designation of origin (PDO) status by the European Union at region where Çimtaş's core facilities are located.





THANK YOU  
**FOR MORE**

[www.cimtas.com](http://www.cimtas.com)

