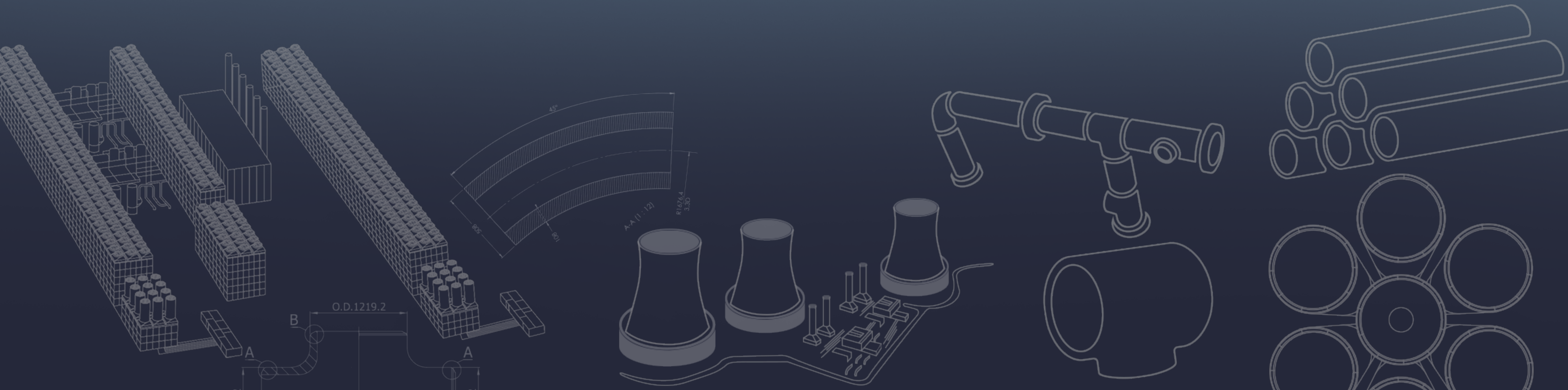


COMPANY OVERVIEW

2025





cimtas | pipe

WHO WE ARE

3 Million DIA"
SPOOL FABRICATION
CAPACITY

100,000 t
LSAW PIPE
CAPACITY

6,000 t
FITTINGS
CAPACITY


Gemlik FTZ / Türkiye
120,000 m²

CİMTAS PIPE is a market-leading company providing engineering, procurement, manufacturing of LSAW pipes and fittings, fabrication of pipe spools for power, oil, gas and nuclear industry with the best in class vision.

More than **580** Projects in **58** Countries
More than **65 Billion USD** Historical Contract Value

54th @ ENR Top 250 International Contractors List - 2024
More than **20,000** Employees



OIL, GAS & PETROCHEMICALS



POWER PLANTS



INFRASTRUCTURE



BUILDING WORKS

BUSINESS LINES



LSAW PIPE
WORKS



SPOOL
WORKS



FITTING
WORKS

WORLDWIDE PROJECTS



50,000 ton
PROCESS PIPE

100,000 ton
LINE PIPE

CS-SS - ALLOY
METALLURGY

16" to 64"
RANGE

LSAW PIPE WORKS



JCO FORMING



CALIBRATION



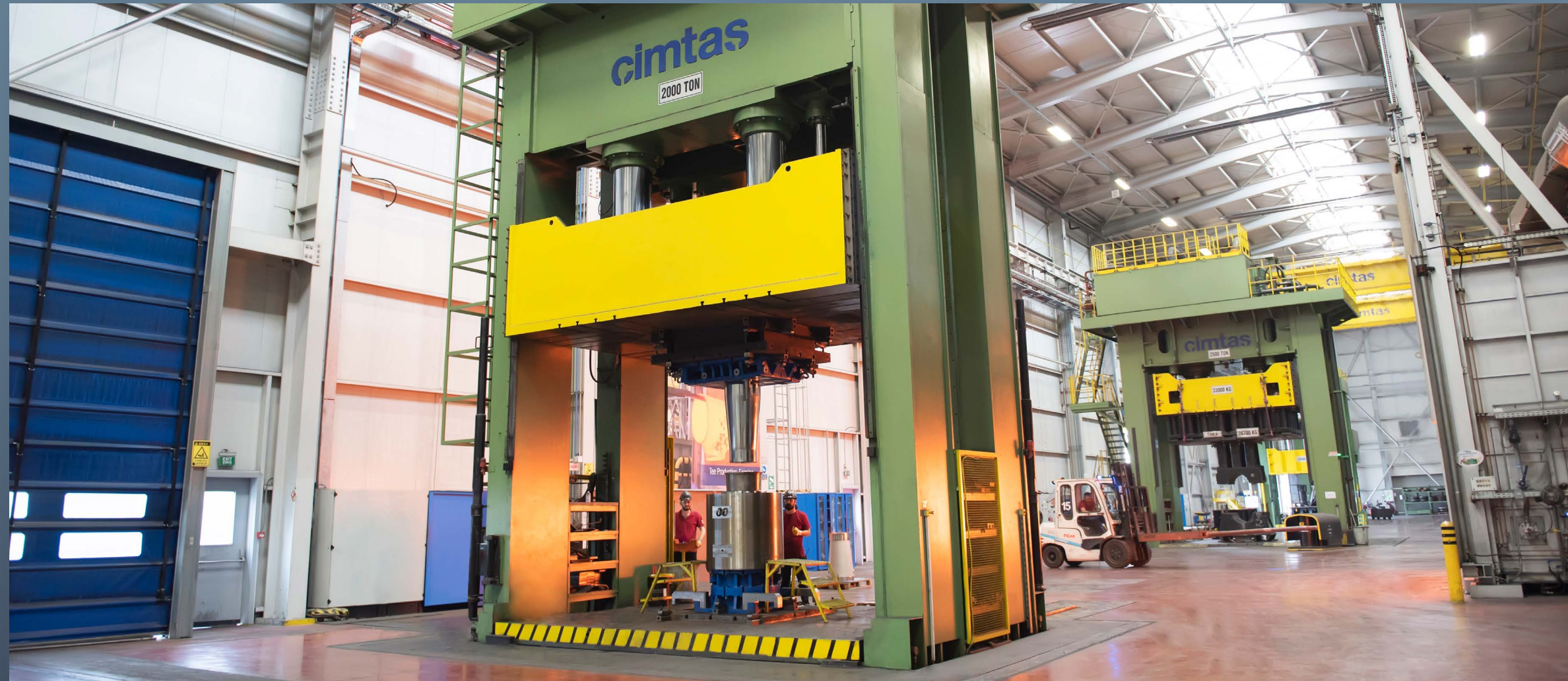
HEAT TREATMENT



FULL BODY MECHANICAL EXPANDER

6,000 ton / 25,000 EA CS-SS - ALLOY 0,5" to 60"
FITTING METALLURGY RANGE

FITTING WORKS



HOT FORMING



HOT FORMING BY MANDREL



COLD FORMING



INDUCTION BENDING

50,000 ton/3 Million DIA" PIPE SPOOL

SPOOL WORKS



PIPE SPOOL FABRICATION



SKID & MODULES



PIPE SPOOL FABRICATION



PACKAGING & TRANSPORTATION

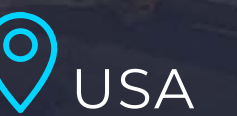
SABINE PASS LNG 6 TRAINS

41,098 t / 2,6 M DIA"



CORPUS CHRISTI LNG 10 TRAINS

35,775 t / 3,12 M DIA"



SPOOL WORKS



ANGOLA LNG

Angola



QUEENSLAND LNG

Australia



GLADSTONE LNG

Australia



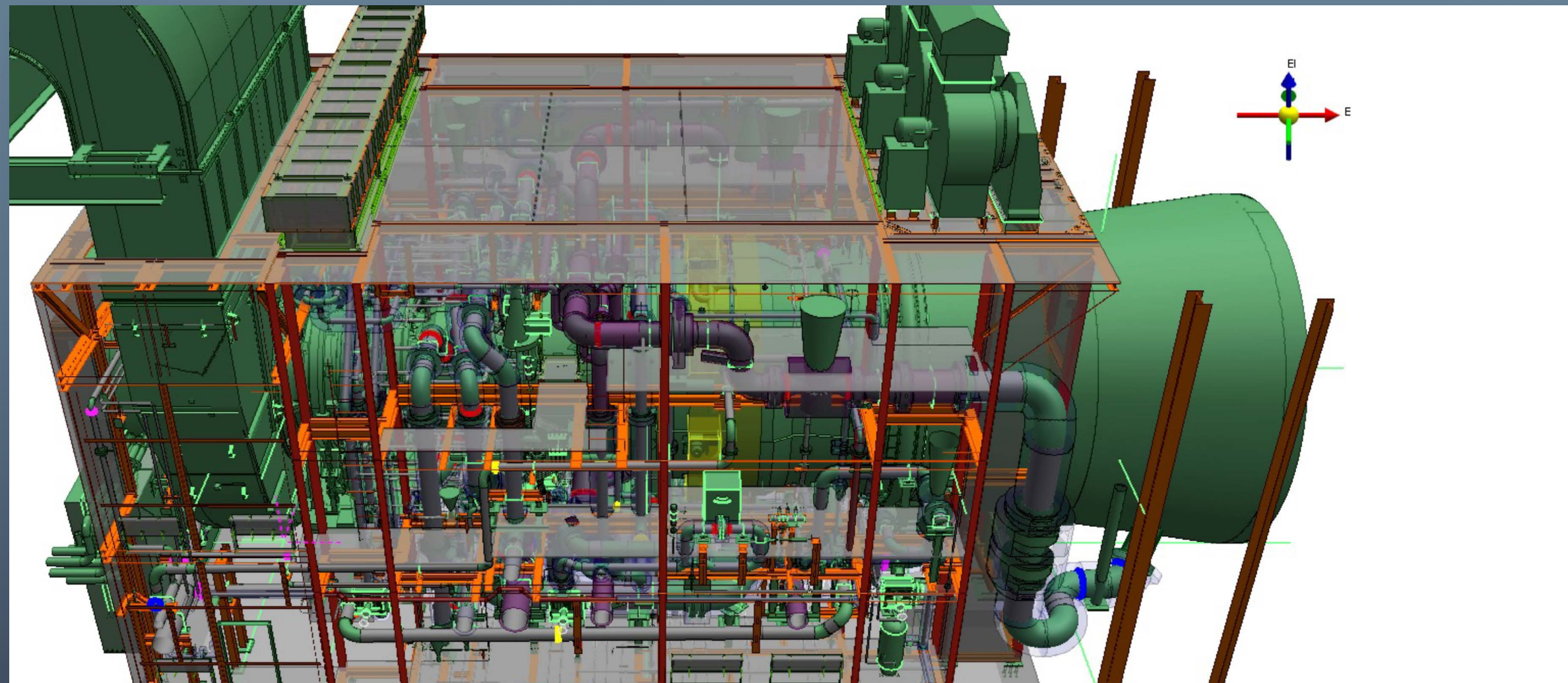
AUSTRALIA PACIFIC LNG

Australia

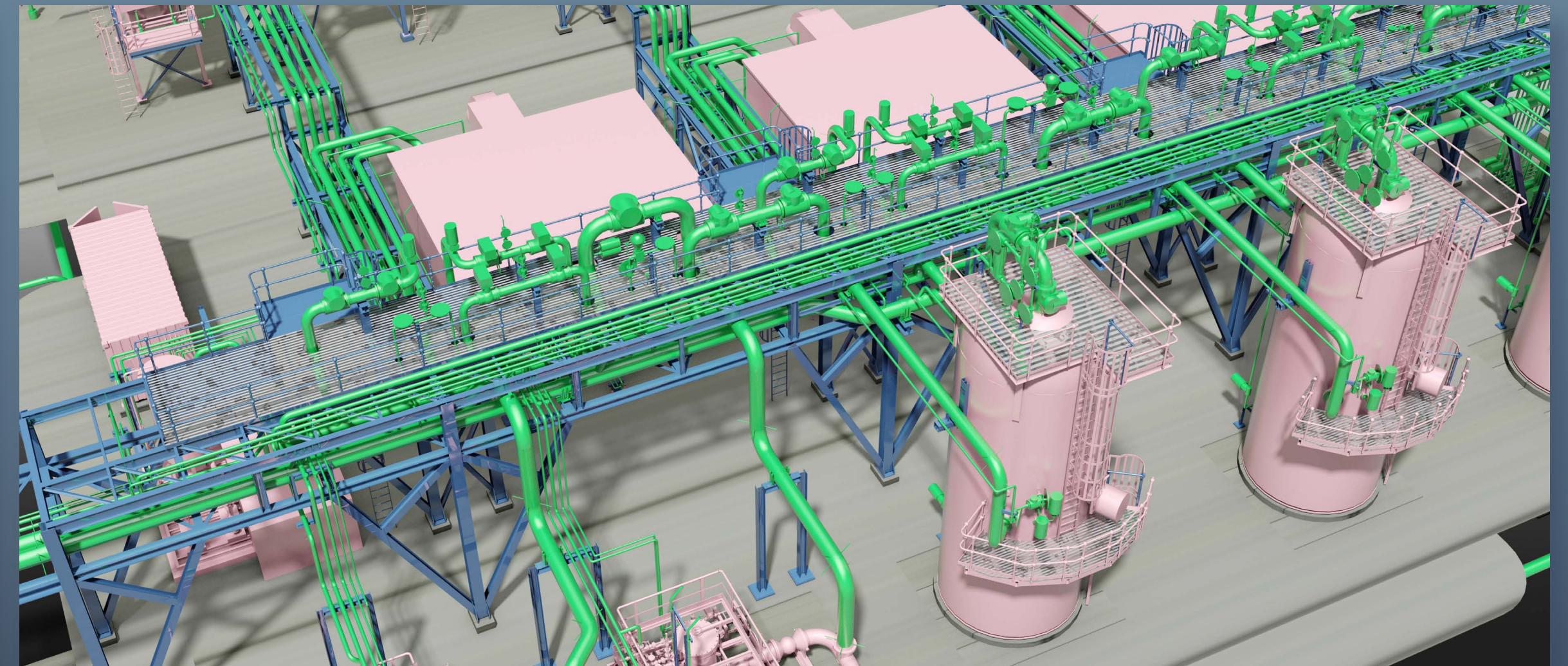
- PLANT & PIPING DESIGN
- MECHANICAL DESIGN & FEA ANALYSIS
- PRESSURE VESSEL DESIGN

- ELECTRICAL & INSTRUMENT DESIGN
- 3D MODELLING for all DISCIPLINES
- CIVIL, STRUCTURAL & MODULAR DESIGN

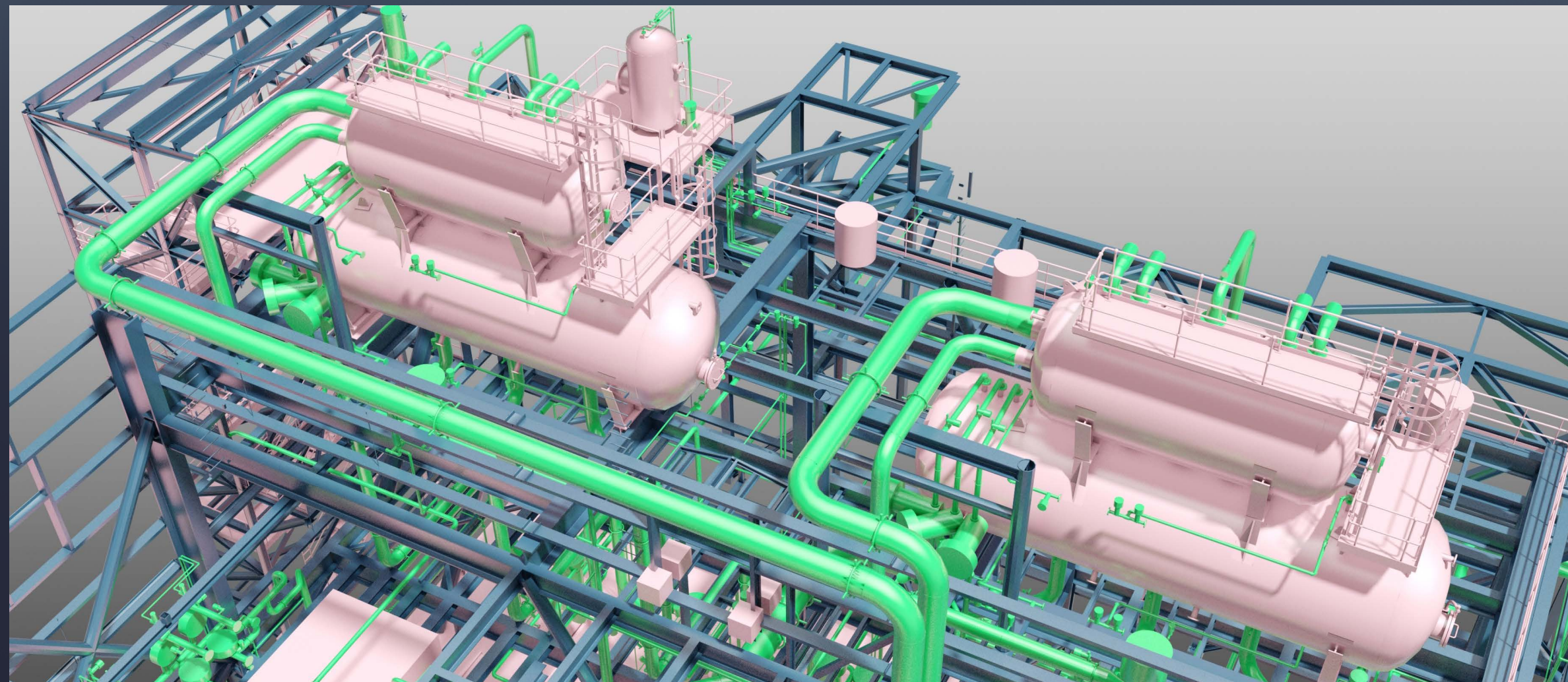
ENGINEERING



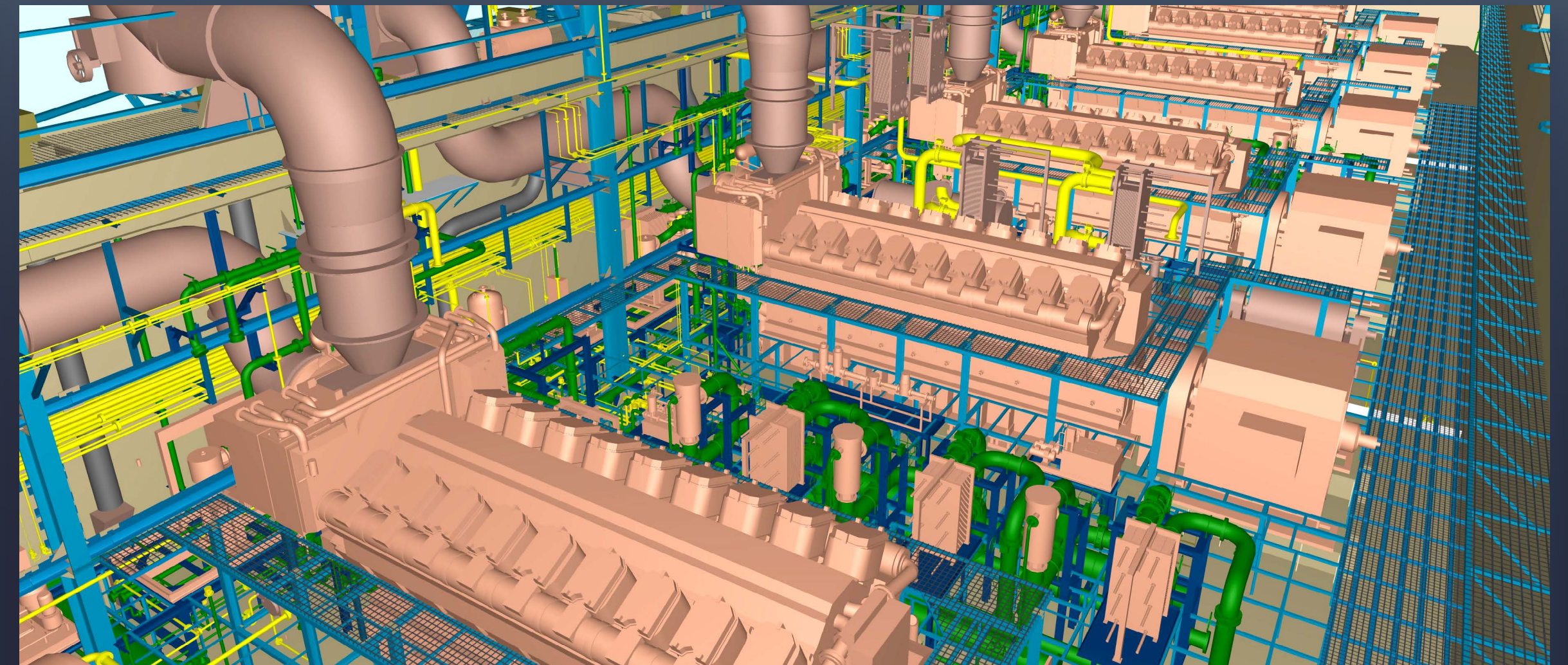
MHI GAS TURBINE MODULAR ENCLOSURE



WEST QURNA-2 OILFIELD



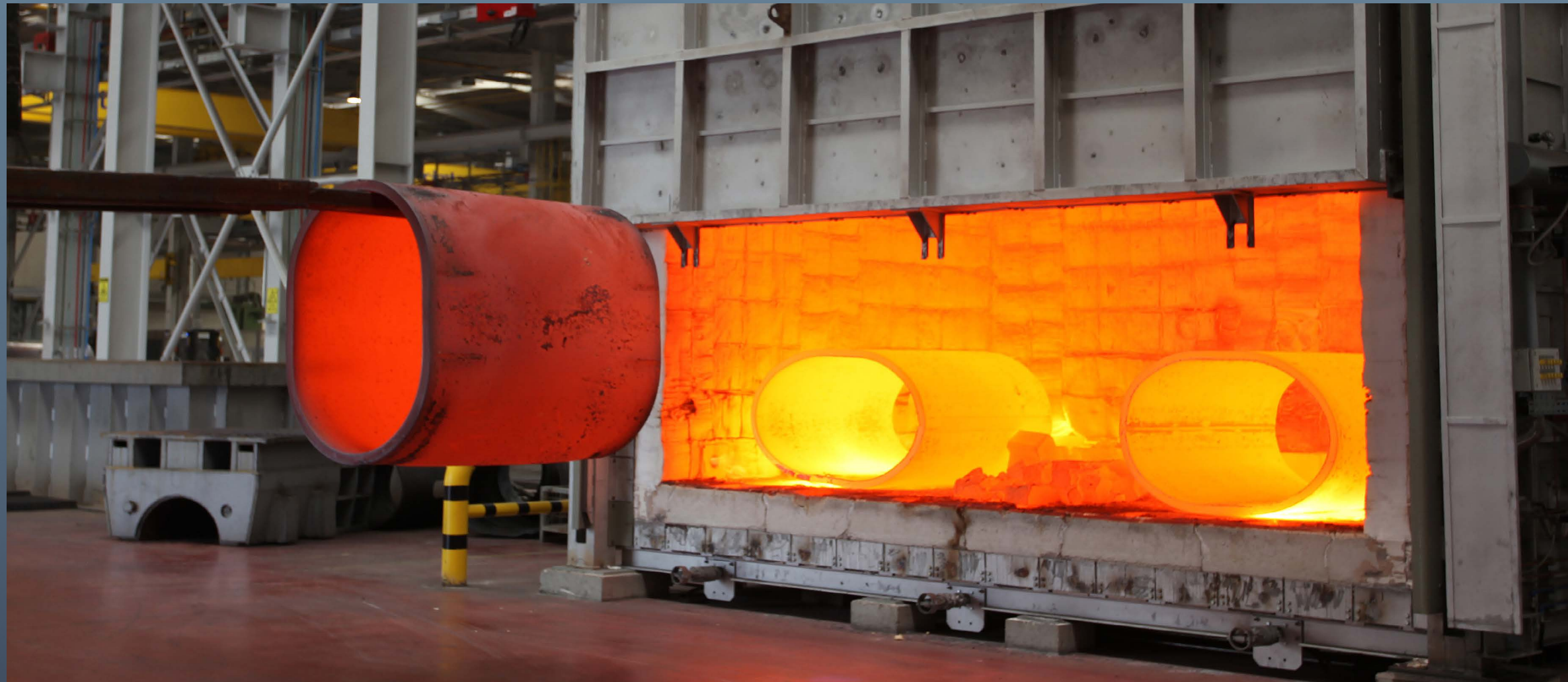
BAZYAN CCPP



KPS-6 POWERSHIP

- +100 ENGINEERS
- 17 FABRICATION HALLS
- 5-AXIS MACHINING
- INDOOR/OUTDOOR MODULE ASSEMBLY
- COLD and INDUCTION BENDING
- MECHANIZED & ROBOTIC WELDING

OPERATIONS



NORMALIZING



VERTICAL DIE



2 HALVES

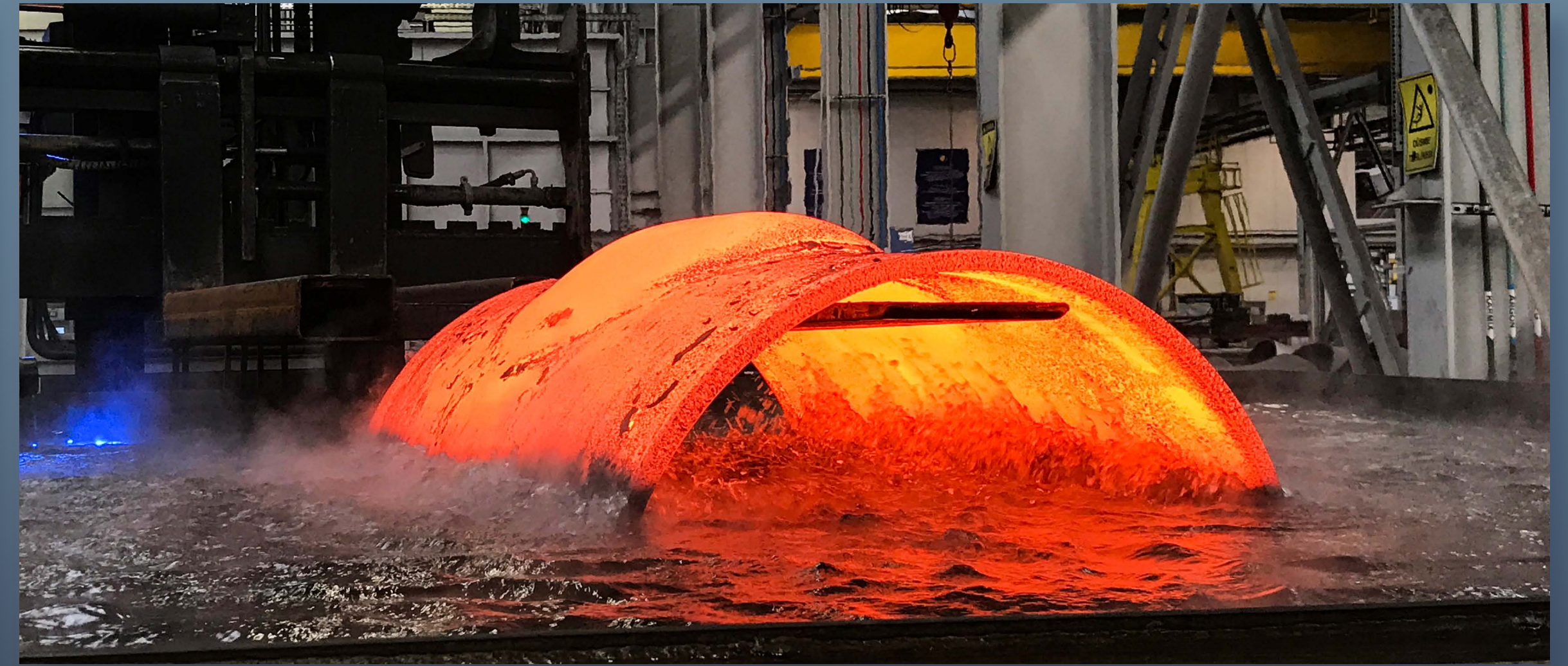


TEE FORMING

OPERATIONS



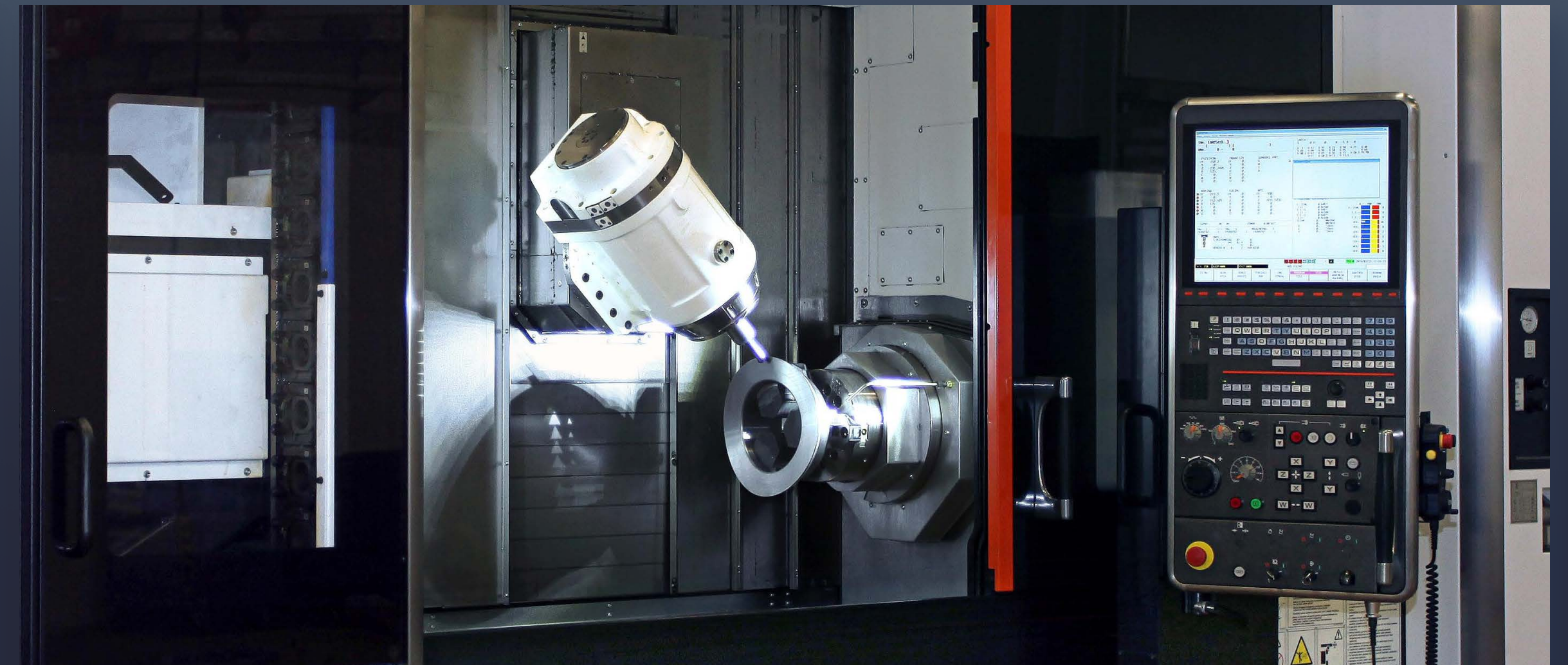
WELDING



QUENCHING

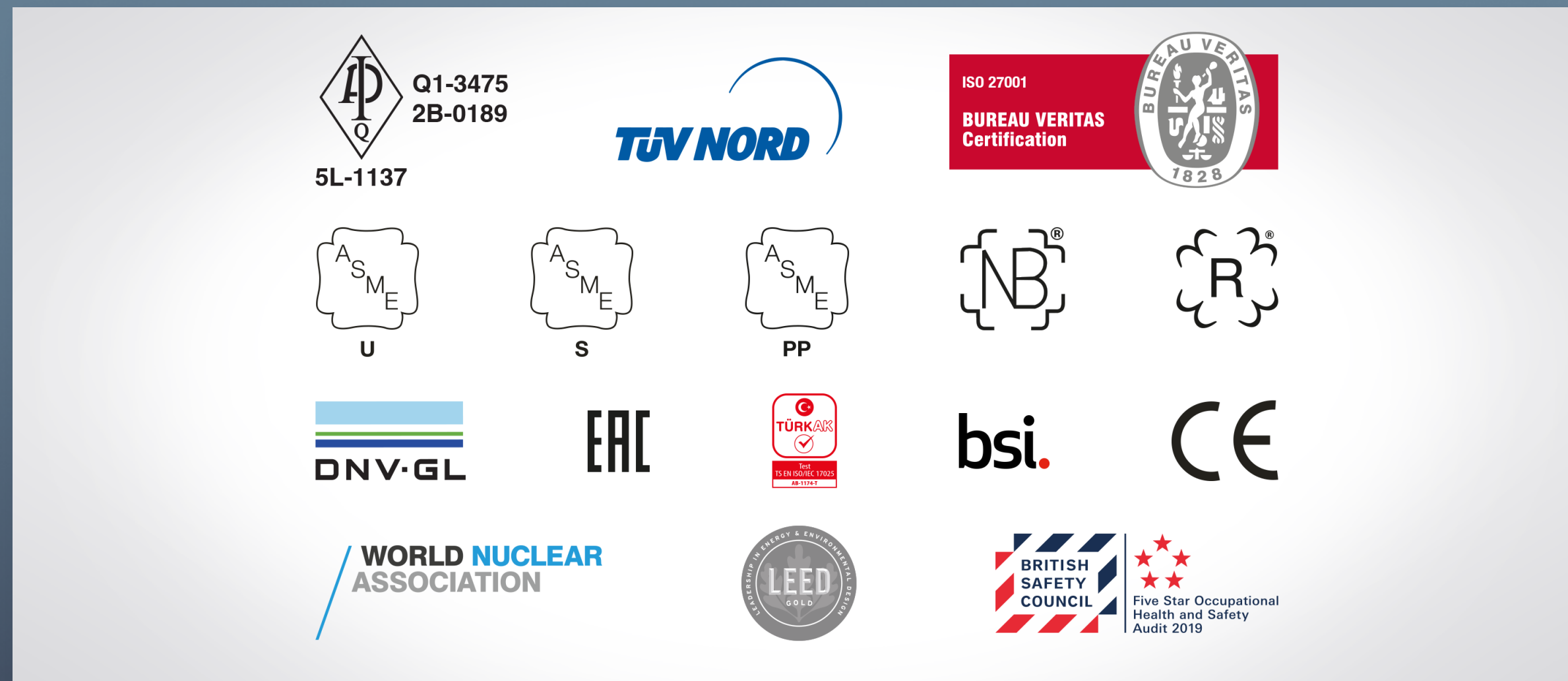


MACHINING



MACHINING

OPERATIONS



CERTIFIED QUALITY MANAGEMENT SYSTEMS



INDEPENDENT QA&QC ORGANIZATION



IN-HOUSE CERTIFIED NDE PERSONNEL



MECHANICAL & METALLOGRAPHIC TEST LABORATORY

GROUP COMPANIES



Gemlik / Türkiye

cintas | steel

Fenced Area : 160,000 m²
Covered Area : 62,000 m²
Number of Employees : 2,000
Annual Fab. Capacity : 80,000 t



Kocaeli / Türkiye

cintas | shipyard

Fenced Area : 270,000 m²
Covered Area : 55,000 m²
Number of Employees : 1,400
Annual Fab. Capacity : 80,000 t



Ningbo / China

cintas | ningbo

Fenced Area : 56,000 m²
Covered Area : 32,000 m²
Number of Employees : 650
Annual Fab. Capacity : 20,000 t



Gemlik / Türkiye

cintas | machining

Fenced Area : 13,000 m²
Covered Area : 12,000 m²
Number of Employees : 300

SUSTAINABILITY

Çimtaş, along with the efforts to attain its wide-range social and economic sustainability goals, is striving to reduce its environmental footprint with all solar-powered facilities, paperless processes and responsible water & waste management approach; and by caring for an olive yard with a tree for each of its employees, a special olive kind awarded with protected designation of origin (PDO) status by the European Union at region where Çimtaş's core facilities are located.



THANK YOU
FOR MORE
www.cimtas.com

