

COMPANY OVERVIEW

2025





cimtas | ningbo

WHO WE ARE

1.5 Million DIA"
SPOOL FABRICATION
CAPACITY

6,000 t
SKID & MODULES
ASSEMBLY CAPACITY

ZERO
INCIDENT
POLICY

 Ningbo FTZ / China
56,000 m²

CIMTAS NINGBO provides process & OEM piping, skid-mounted process assemblies and modularization solutions to power, oil & gas and petrochemical industries.

More than **580** Projects in **58** Countries
More than **65 Billion USD** Historical Contract Value

54th @ ENR Top 250 International Contractors List - 2024
More than **20,000** Employees



OIL, GAS & PETROCHEMICALS



POWER PLANTS



INFRASTRUCTURE



BUILDING WORKS

BUSINESS LINES



PIPE SPOOLS



MODULARIZATION

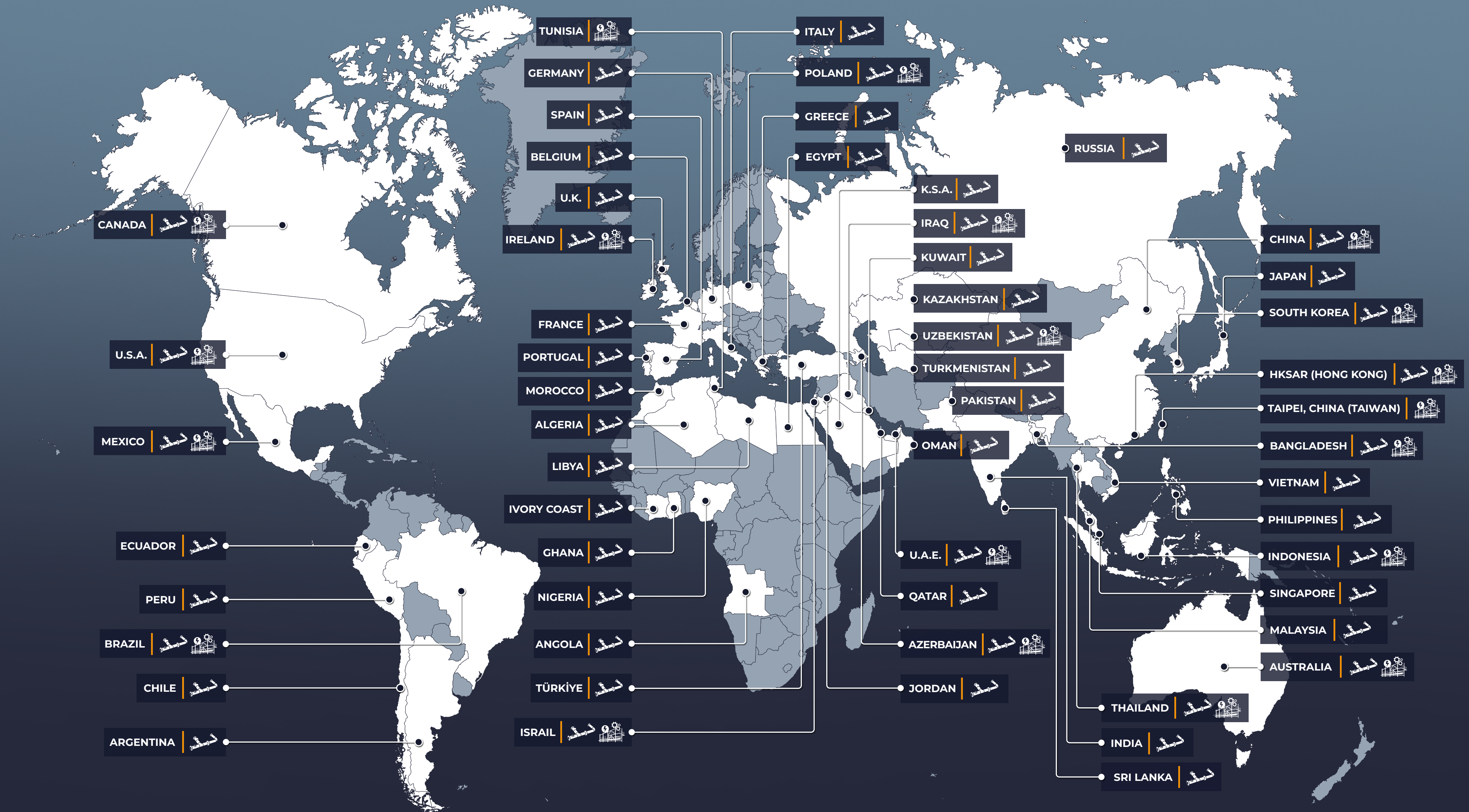


ENERGY SERVICES



QUICK RELEASE FLANGES

WORLDWIDE PROJECTS



20,000 ton / 1.5 Million DIA"
SPOOL CAPACITY

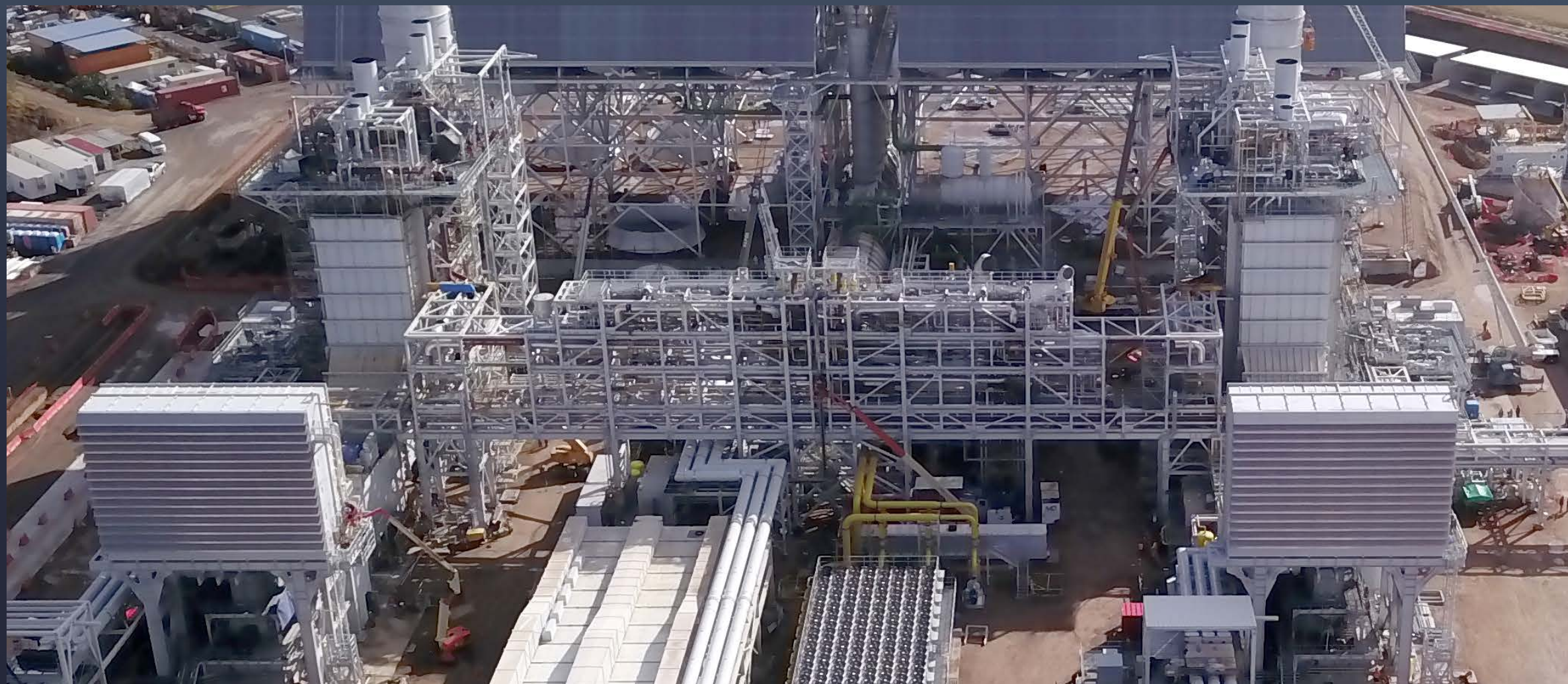
PIPE SPOOLS



MAIN STEAM PIPING



SKID PIPING



BOP PIPING



LNG PIPING

6,000 ton
ASSEMBLY / ANNUAL

MODULES



MHI GAS TURBINE ENCLOSURE MODULES



SIEMENS AIP MODULES



GENERAL ELECTRIC EPE 9HA 9016 MODULE



GENERAL ELECTRIC 9 FA MSD PIPING MODULES

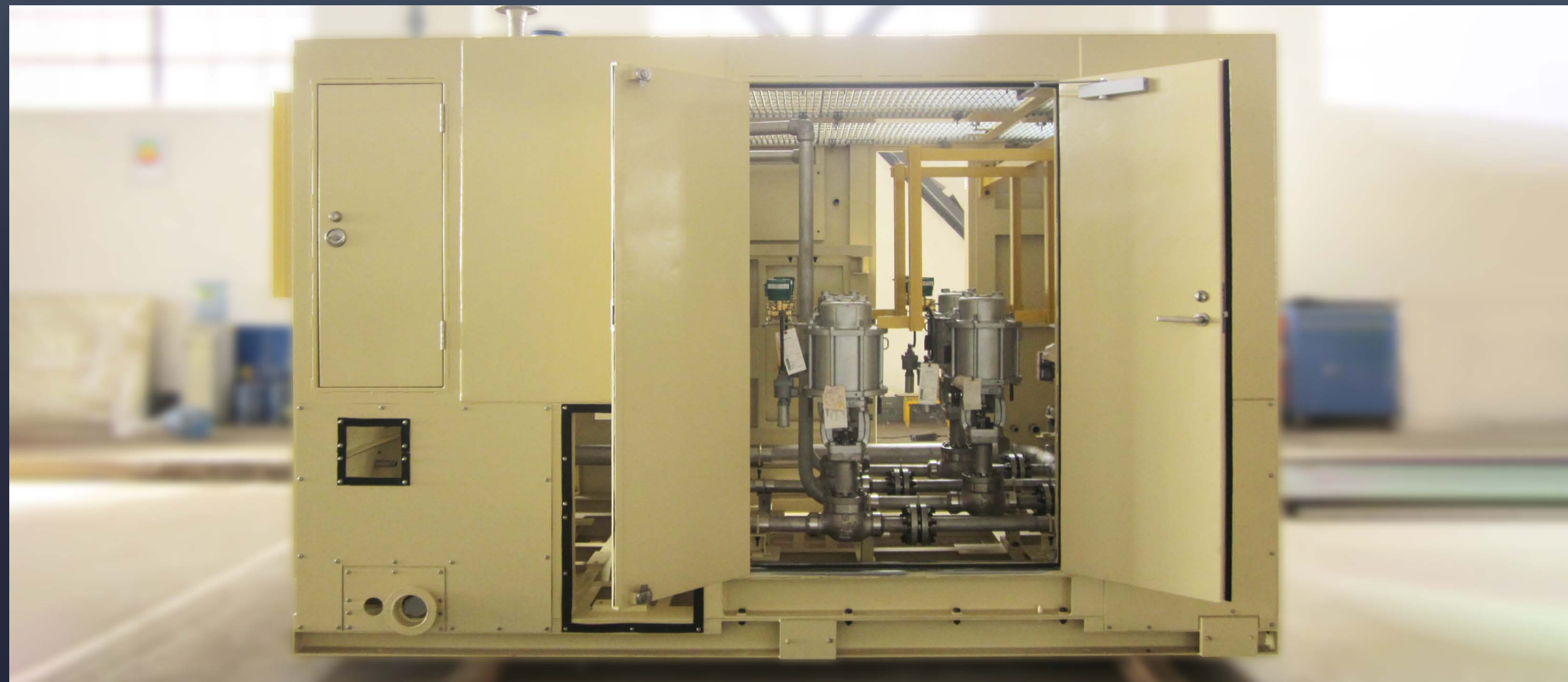
SKID/MODULE PROJECTS



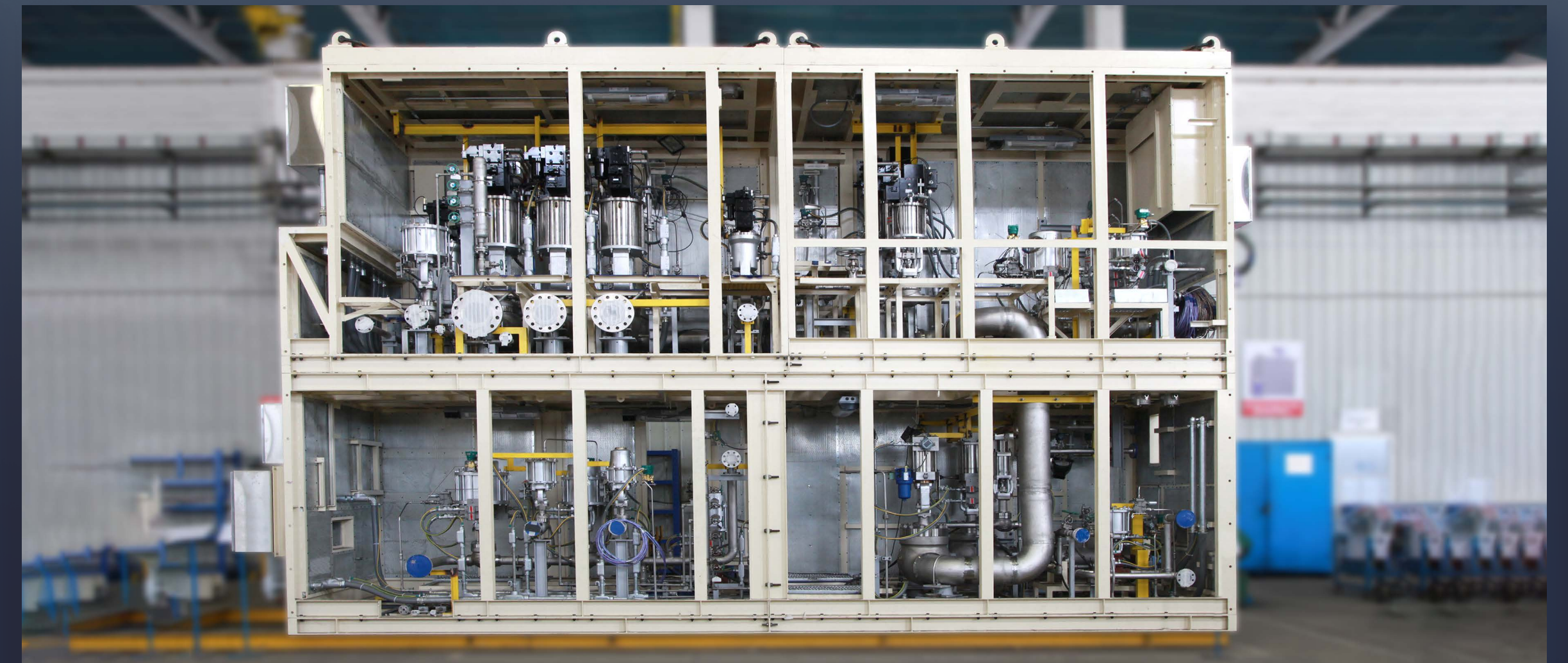
GENERAL ELECTRIC A160 SKID



MITSUBISHI POWER M701F5 FUEL GAS MODULE



MITSUBISHI POWER PURGE AIR SKID



MITSUBISHI POWER 501J FUEL GAS & PURGE AIR ASSEMBLIES

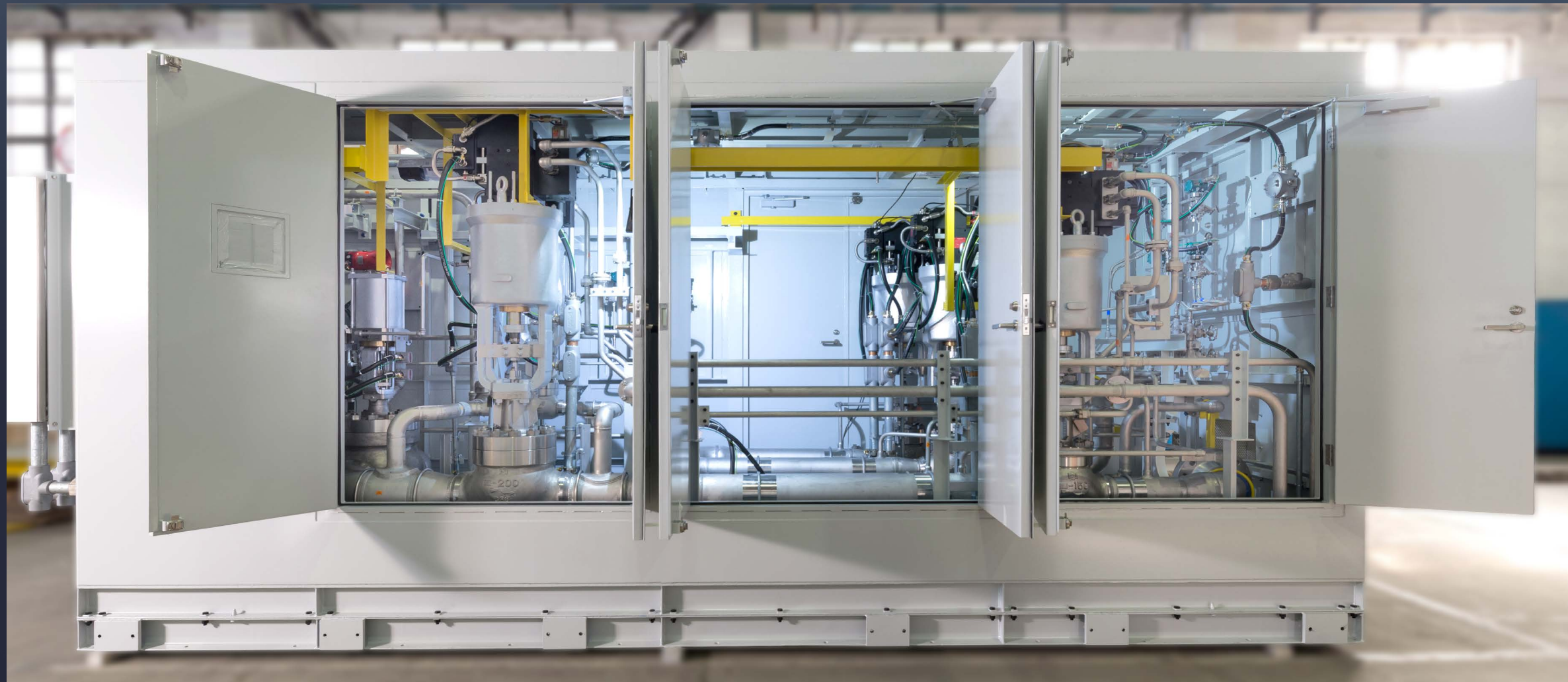
SKID/MODULE PROJECTS



MITSUBISHI POWER FLOW DIVIDER



MITSUBISHI POWER FUEL GAS SKIDS



MITSUBISHI POWER M701 F4 FUEL GAS SKID



MITSUBISHI POWER M701 F4 FUEL GAS SKID

FUEL GAS JIG



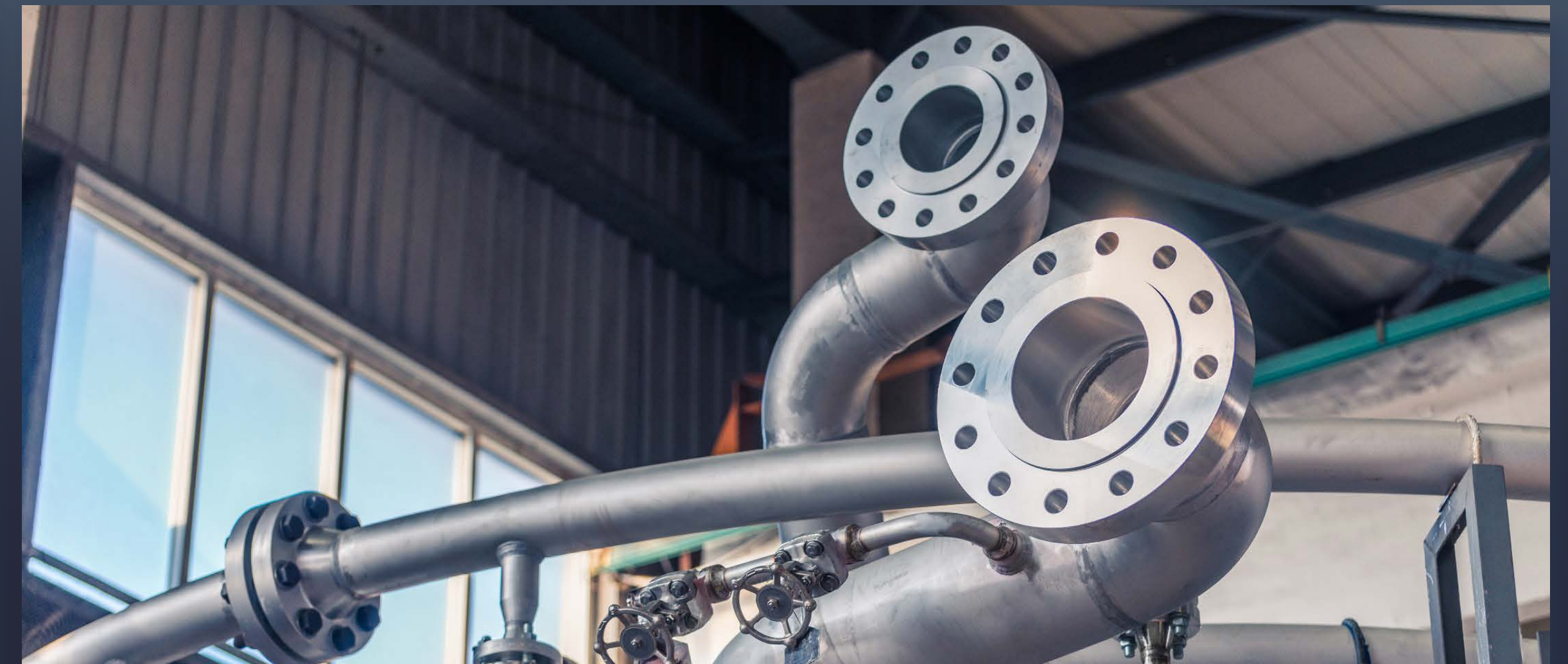
MITSUBISHI POWER AMERICA M501J JIG



MITSUBISHI POWER AMERICA M501J JIG

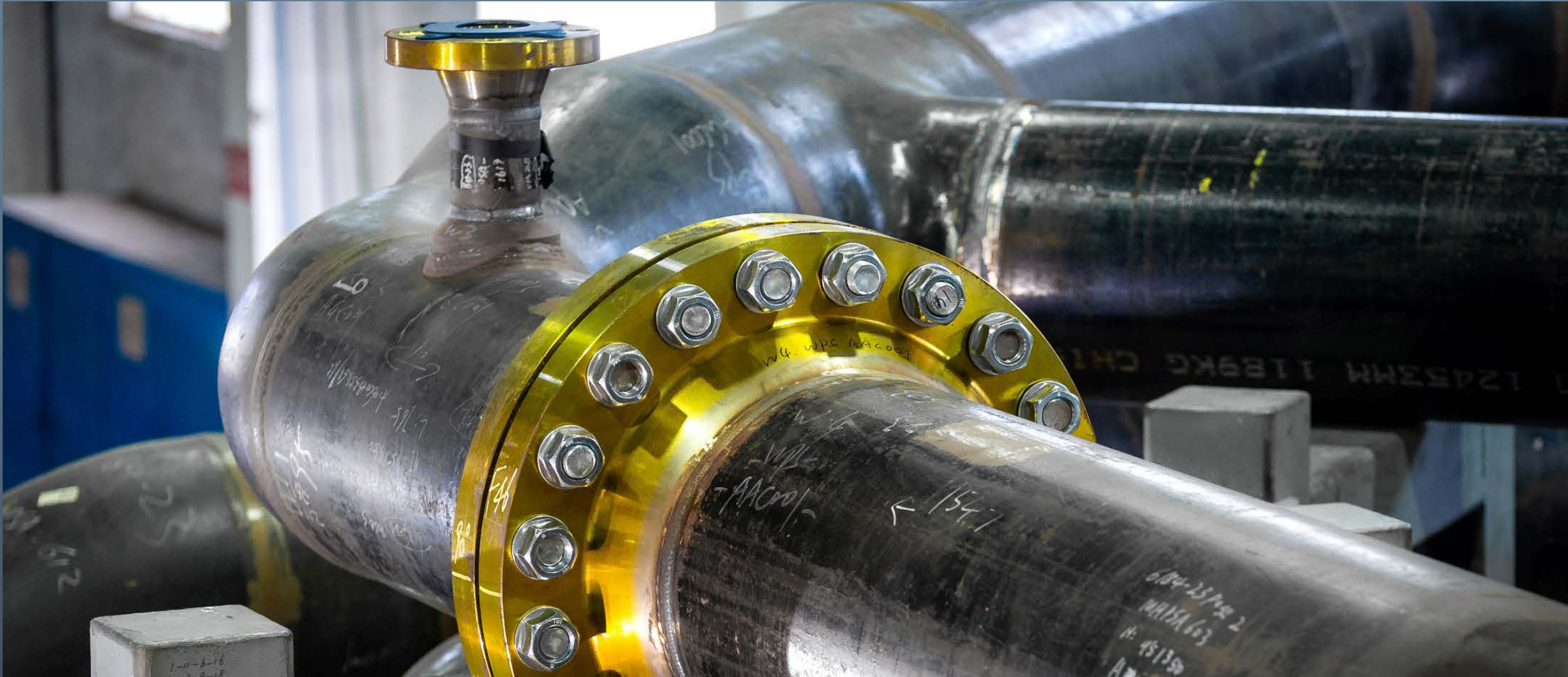


MITSUBISHI POWER M701F4 JIG

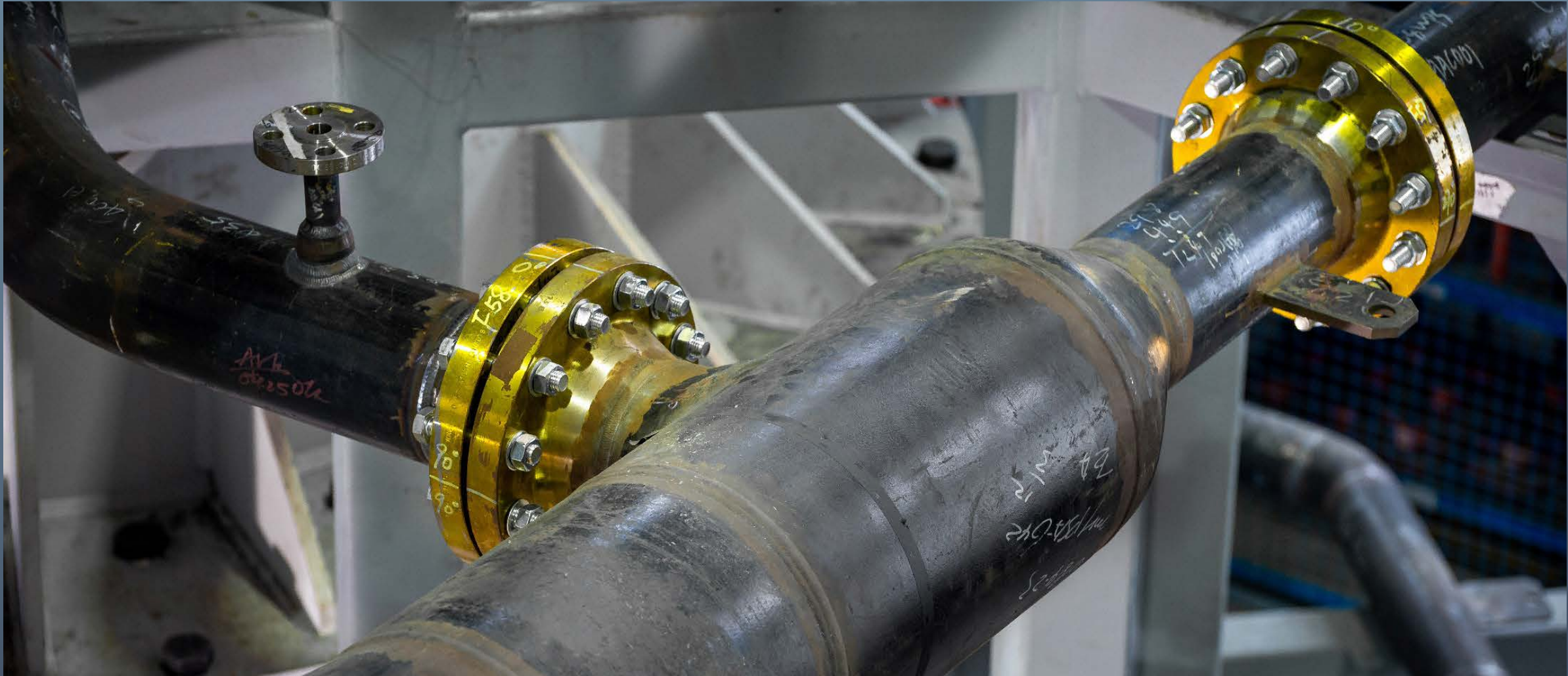


MITSUBISHI POWER M701F4 JIG

BLEED AIR JIG



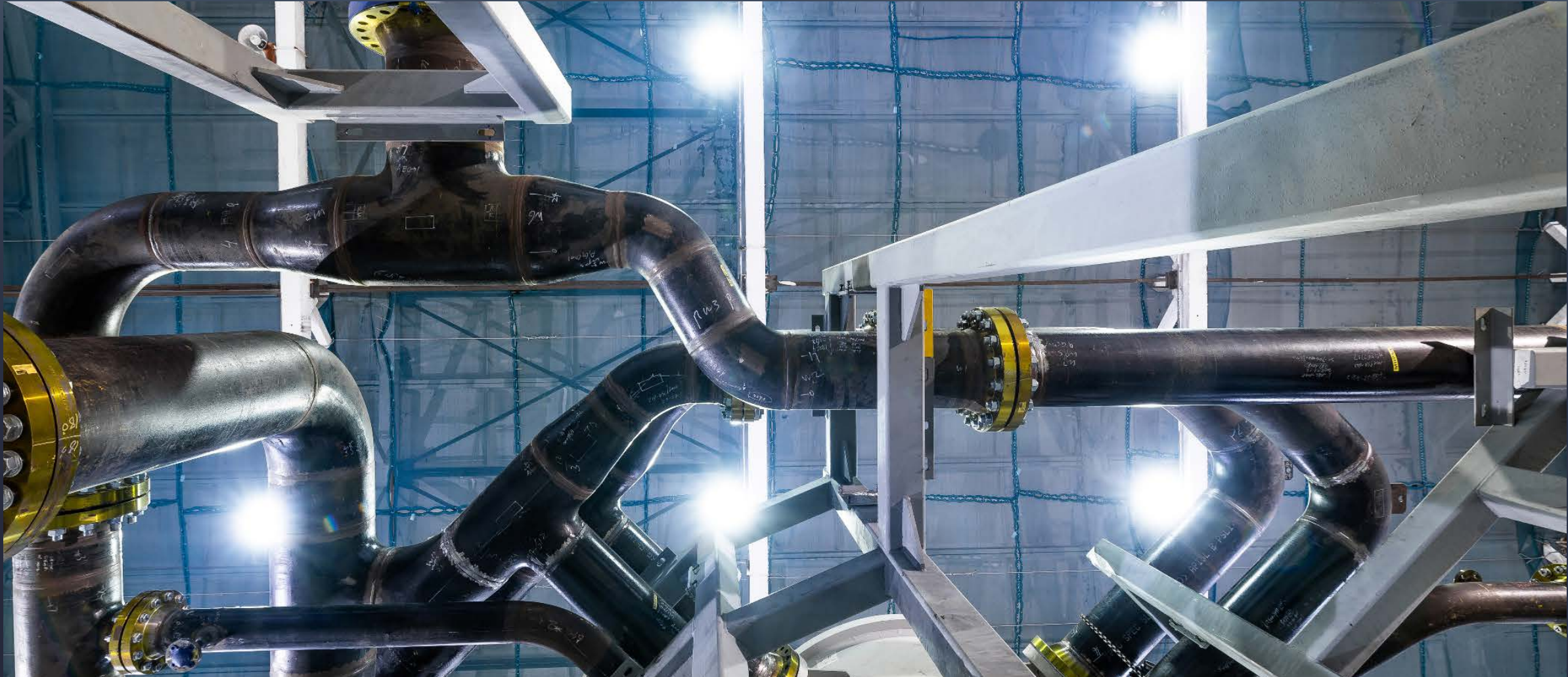
MITSUBISHI POWER M701F4 JIG



MITSUBISHI POWER M701F4 JIG



MITSUBISHI POWER M701F4 JIG



MITSUBISHI POWER M701F4 JIG

PHARMACEUTICAL SKIDS



CPME BLENDER SKID



CPME BLENDER SKID



CPME BLENDER SKID



CPME BLENDER SKID

ENERGY SERVICES & QUICK RELEASE FLANGES



SUPPLY of PIPING and AUX. COMPONENT for MAINTENANCE



6 DIFFERENT SIZES



SHORT CYCLE TIME

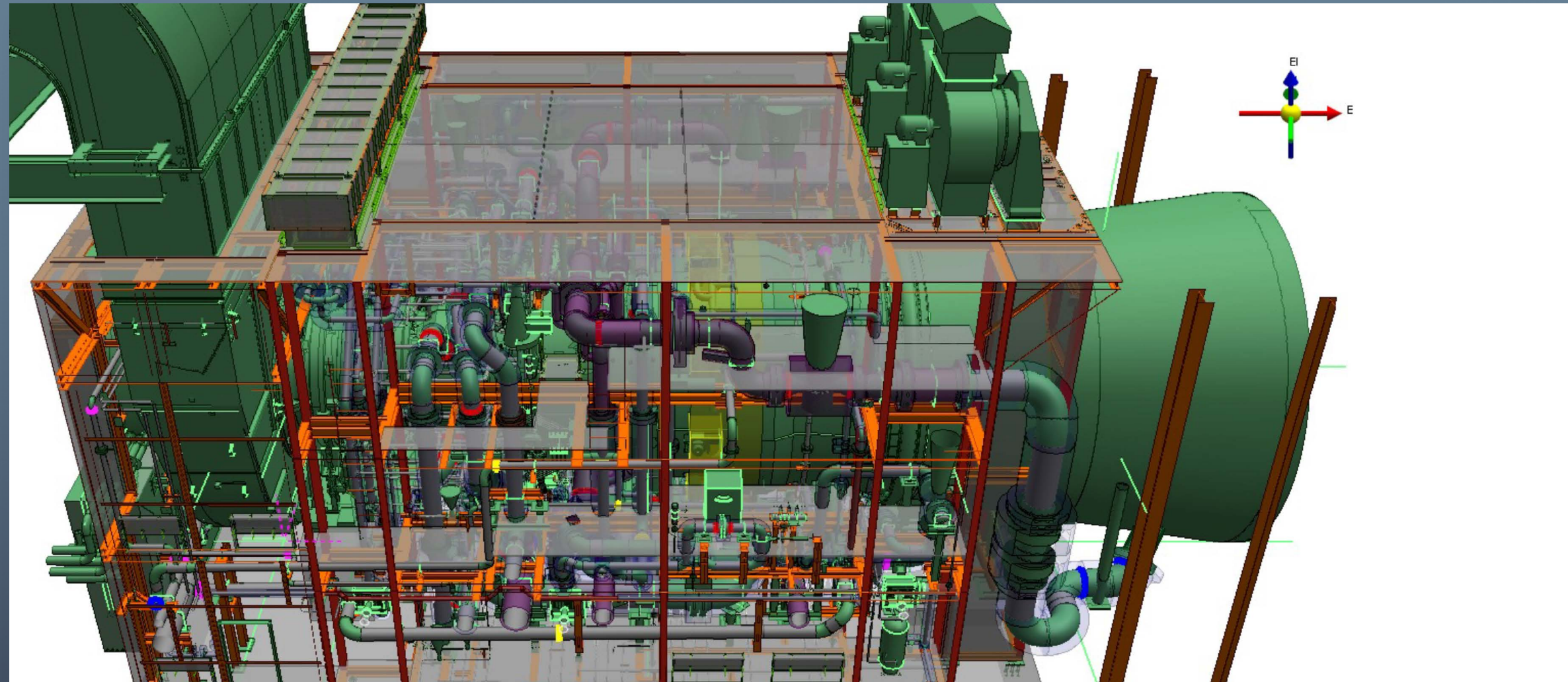


214 DIFFERENT PART NUMBERS

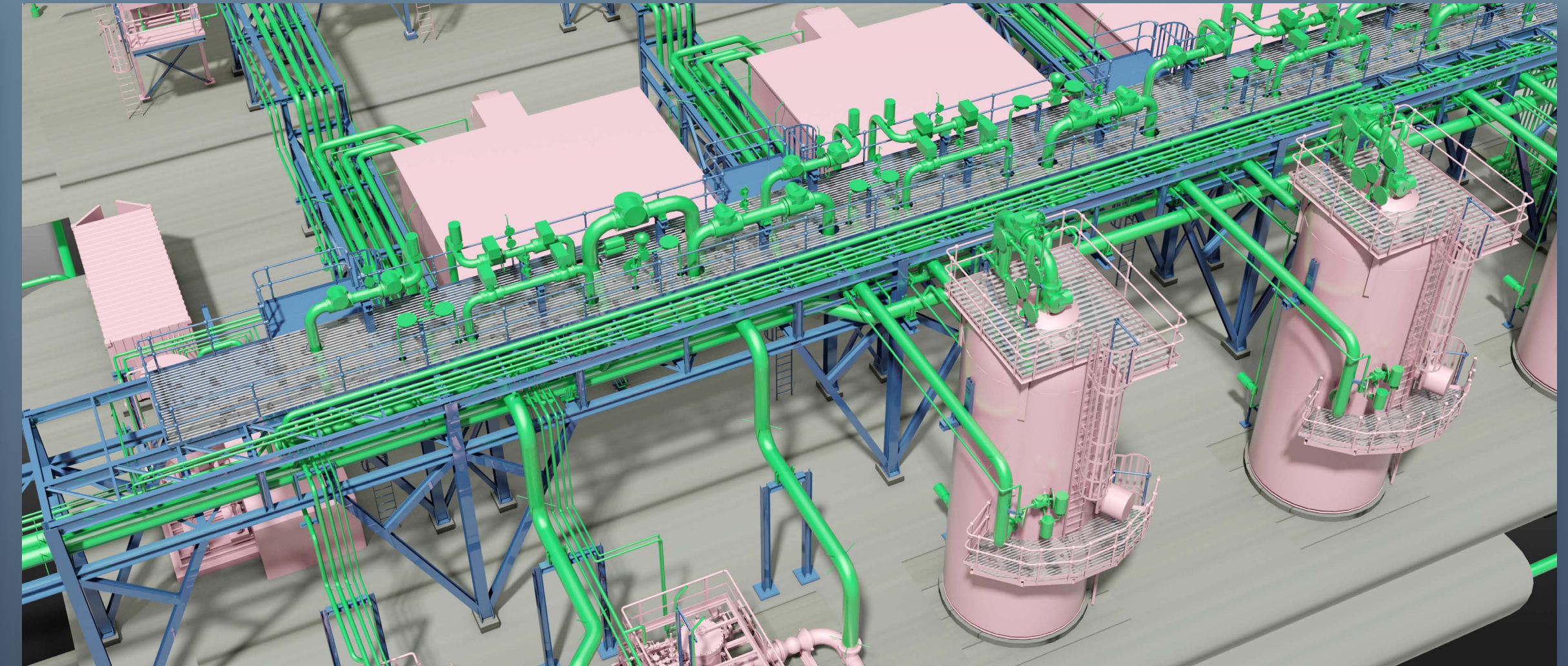
- PLANT & PIPING DESIGN
- MECHANICAL DESIGN & FEA ANALYSIS
- PRESSURE VESSEL DESIGN

- CIVIL & STRUCTURAL DESIGN
- ELECTRICAL & INSTRUMENTAL DESIGN
- MODULAR & JIG DESIGN

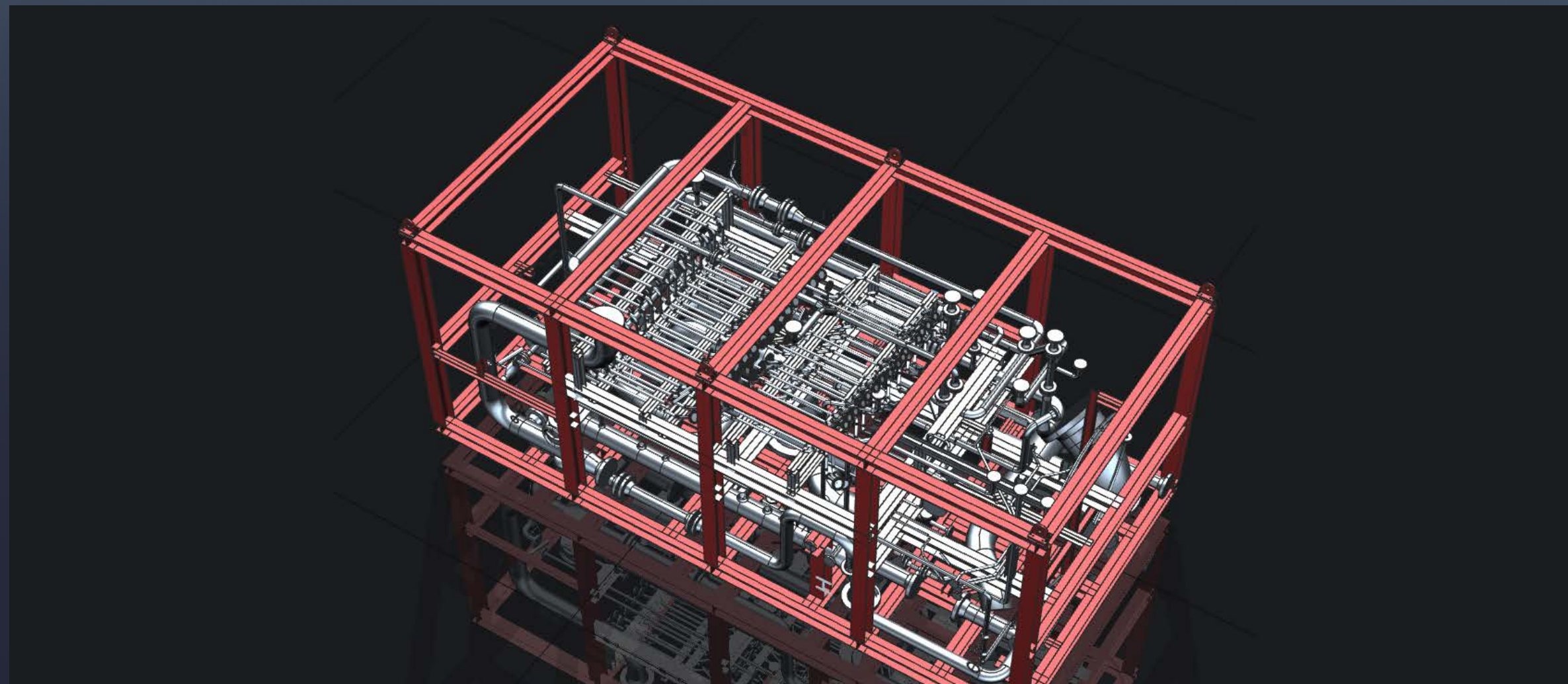
ENGINEERING



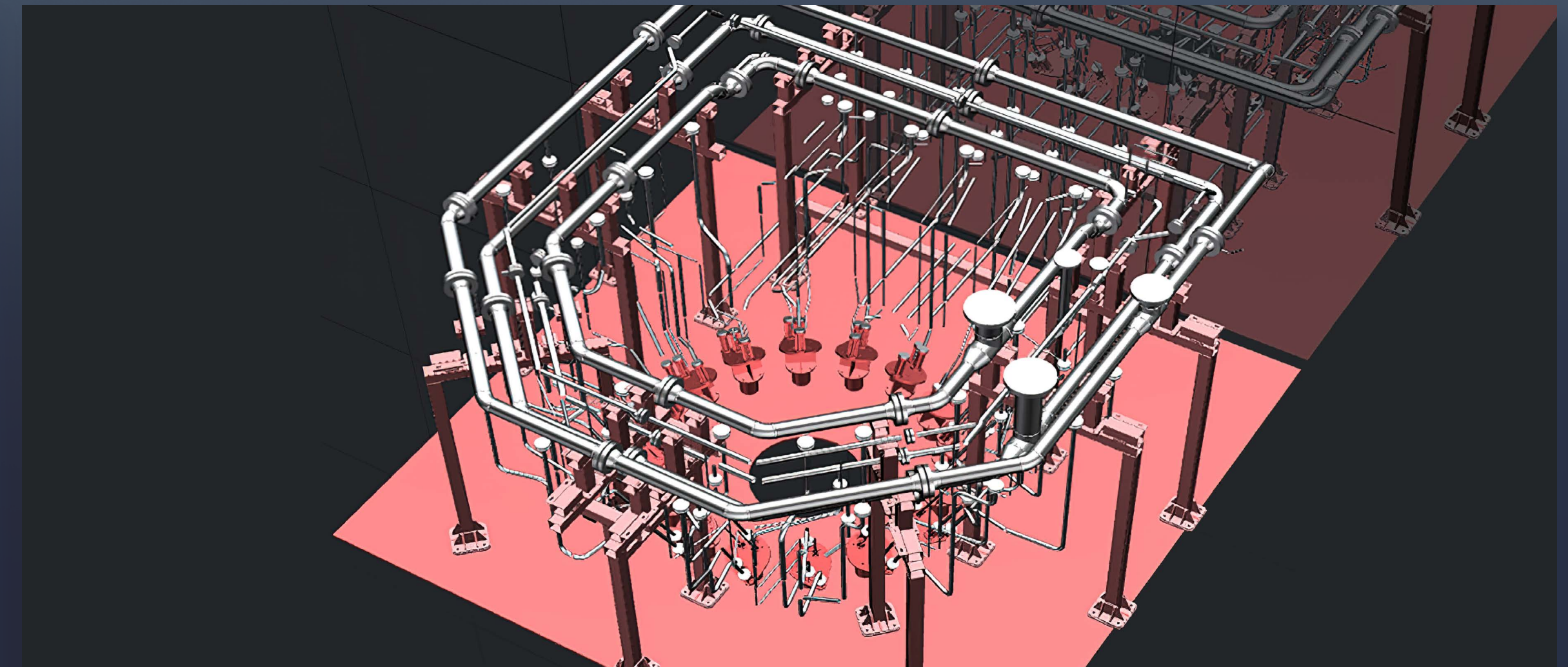
MHI GAS TURBINE MODULAR ENCLOSURE



WEST QURNA-2 OILFIELD



MHI MODULAR SKID



GAS TURBINE JIG

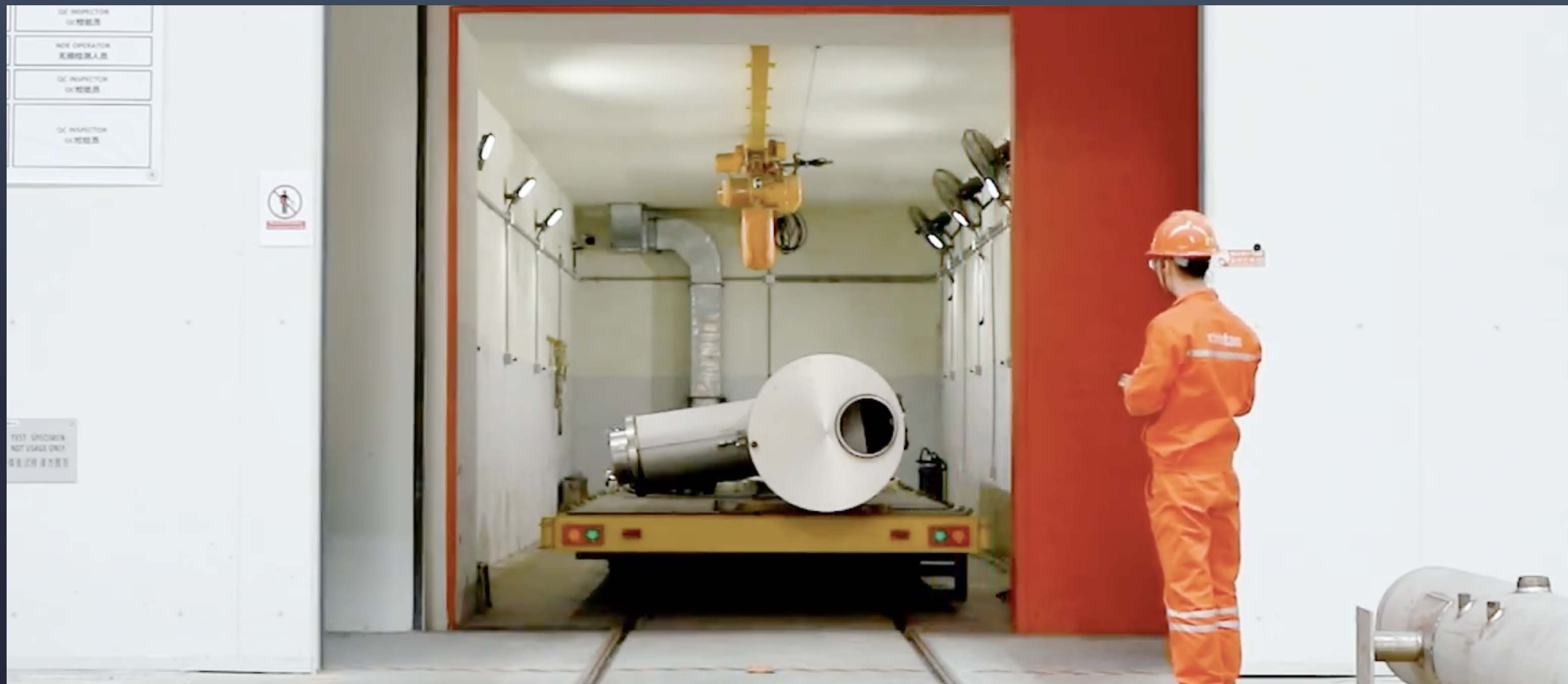
OPERATIONS



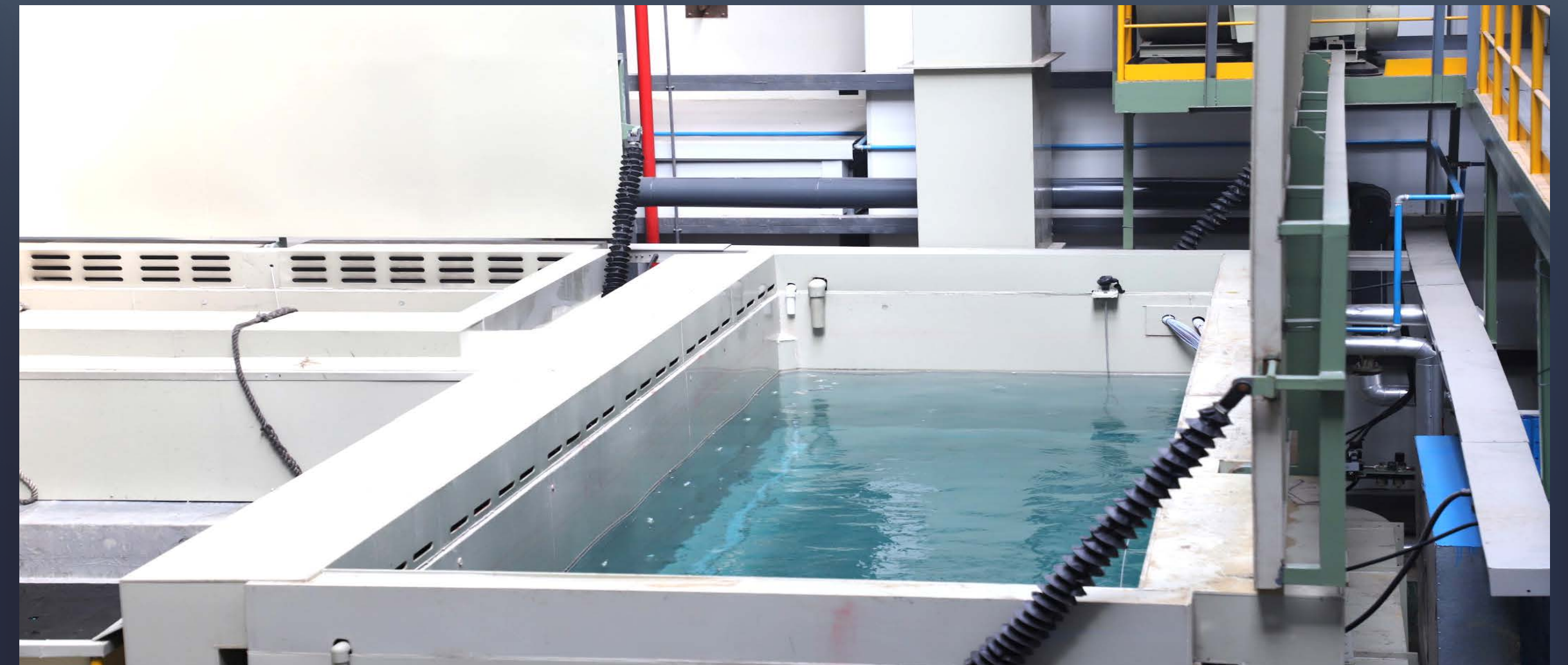
FABRICATION BAYS



HIGH MODULE ASSEMBLY BAY



AUXILIARY EQUIPMENT NDT



AUXILIARY EQUIPMENT PICKLING & PHOSPHATE POOL

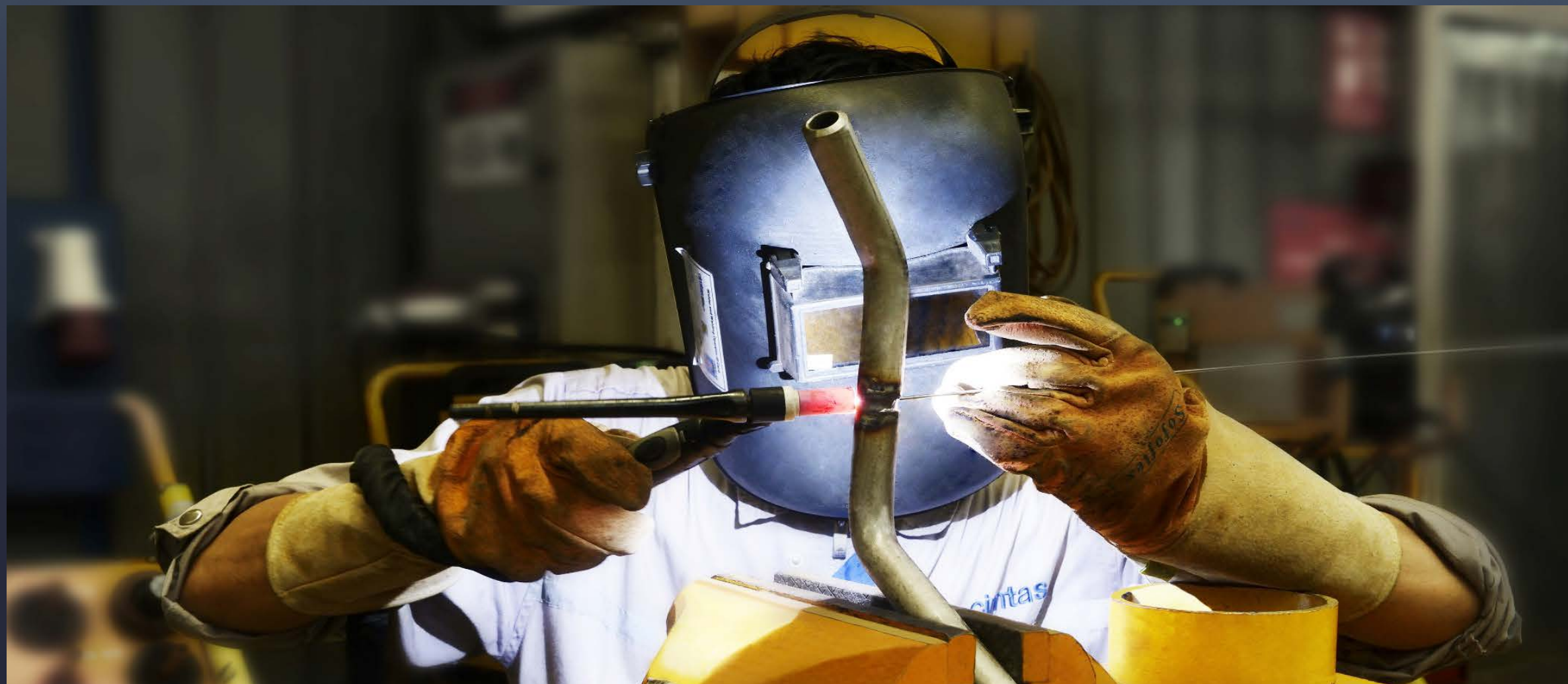
OPERATIONS



COLD & ROUND BENDING



CUTTING



MANUAL WELDING



AUTOMATION WELDING

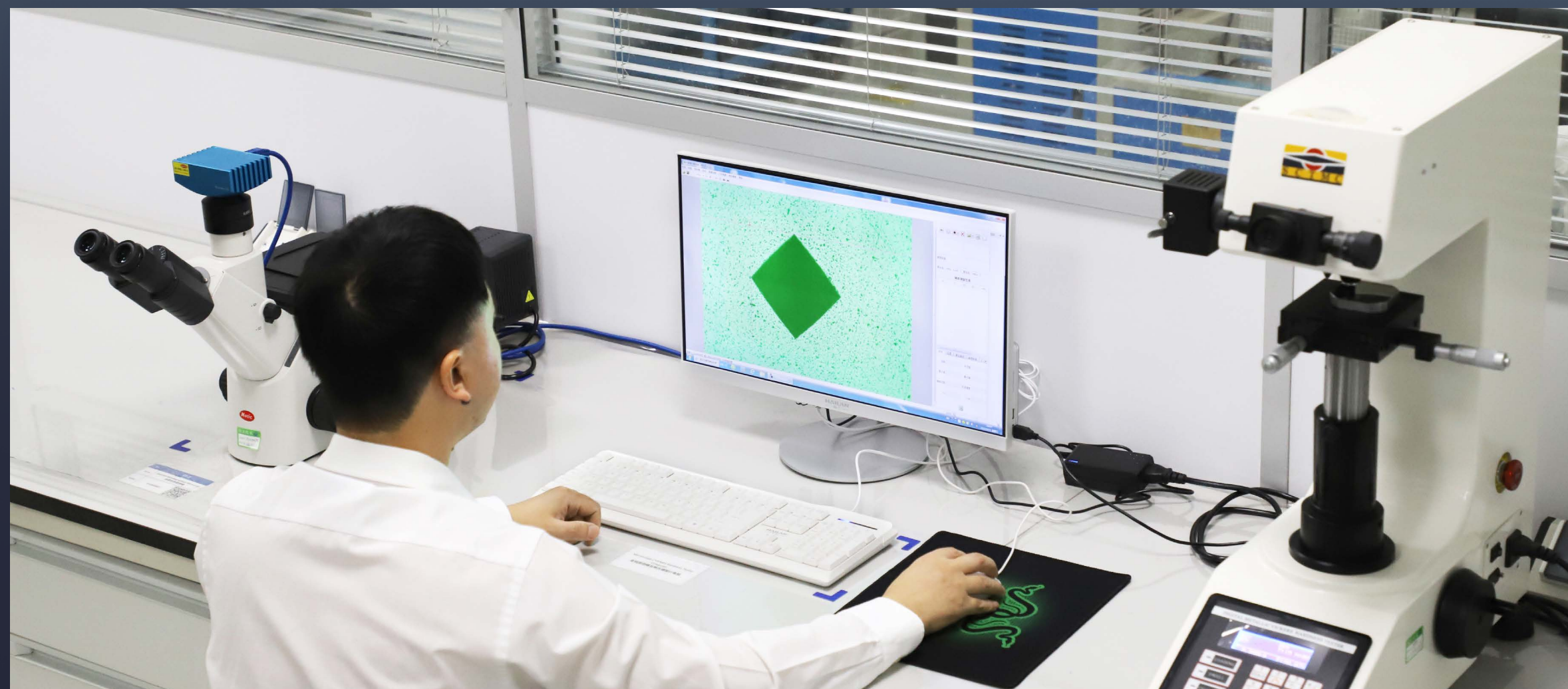
OPERATIONS



CERTIFIED QUALITY MANAGEMENT SYSTEMS



INDEPENDENT QA&QC ORGANIZATION

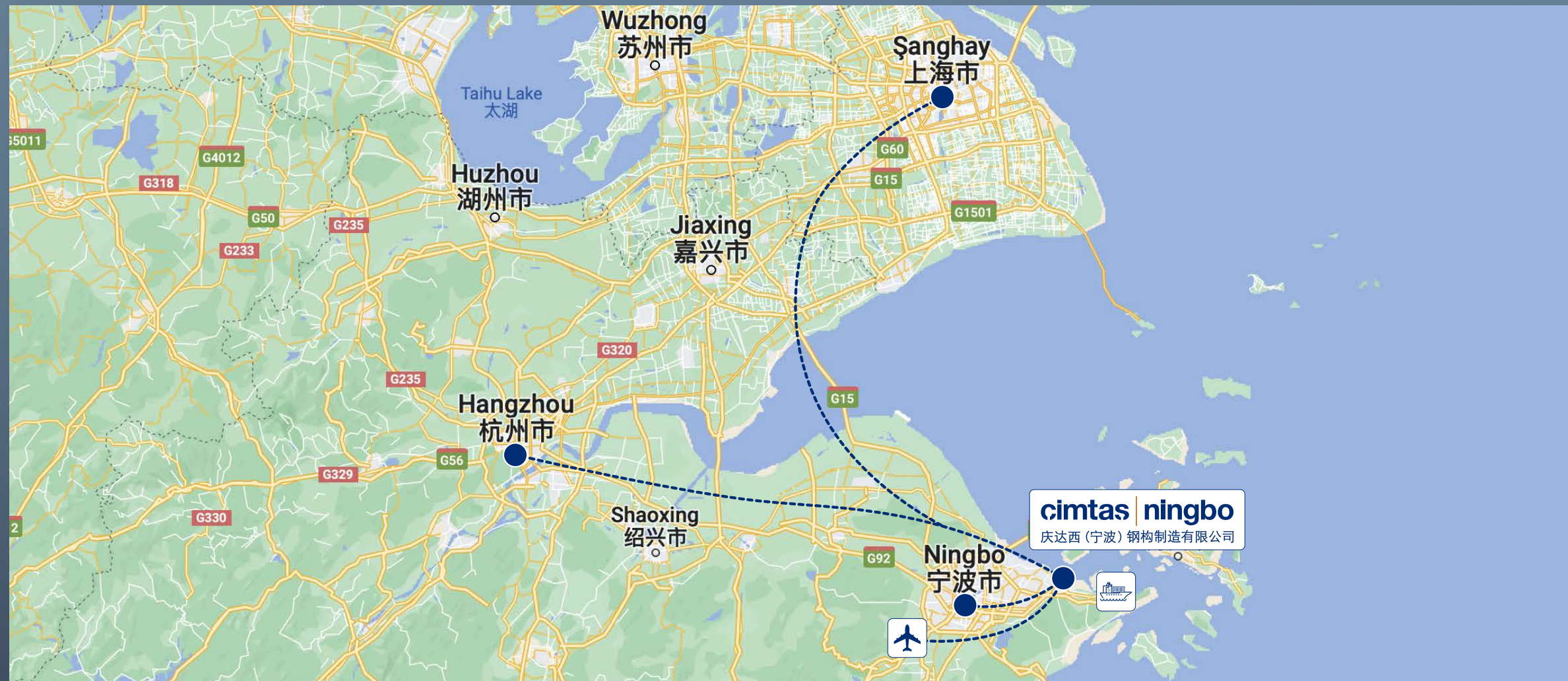


QA/QC LABORATORY



3D MEASUREMENTS

LOGISTICS



LOCATION



TRANSPORTATION



NEARBY DEEP SEAPORT



STEEL FRAME PACKING

ENVIRONMENTAL PROTECTION



THE C A T A L Y T I C C O M B U S T I O N S Y S T E M



W A S T E W A T E R T R E A T M E N T S Y S T E M



A C I D M I S T P U R I F I C A T I O N S Y S T E M



C H E M I C A L S T O R A G E A R E A

GROUP COMPANIES



cintas | steel

Fenced Area : 160,000 m²
Covered Area : 62,000 m²
Number of Employees : 2,000
Annual Fab. Capacity : 80,000 t



cintas | pipe

Fenced Area : 120,000 m²
Covered Area : 75,000 m²
Number of Employees : 1,000
Annual Spool Fab. Capacity : 42,000 t
Pipe-Fitting Manufacturing : 165,000 t
Annual Fittings Capacity : 6.000 t
Annual LSAW Process Pipe Capacity : 40.000 t
Annual LSAW Line Pipe Capacity : 160.000 t



cintas | shipyard

Fenced Area : 270,000 m²
Covered Area : 55,000 m²
Number of Employees : 1,400
Annual Fab. Capacity : 80,000 t



cintas | machining

Fenced Area : 13,000 m²
Covered Area : 12,000 m²
Number of Employees : 300

SUSTAINABILITY

Çimtaş, along with the efforts to attain its wide-range social and economic sustainability goals, is striving to reduce its environmental footprint with all solar-powered facilities, paperless processes and responsible water & waste management approach; and by caring for an olive yard with a tree for each of its employees, a special olive kind awarded with protected designation of origin (PDO) status by the European Union at region where Çimtaş's core facilities are located.



THANK YOU
FOR MORE
www.cimtas.com

