

COMPANY OVERVIEW
2025





cimtas | shipyard

WHO WE ARE

80,000 t
FABRICATION
CAPACITY

70,000 t
ASSEMBLY
CAPACITY

ZERO
INCIDENT
POLICY


Kocaeli FTZ / Türkiye
270,000 m²

ÇİMTAŞ SHIPYARD fabricates structural steel, steel wind towers, offshore & subsea structures, modules and sea vessels at its facility having vast assembly yards and a self-quay for direct sea transportation.

More than **580** Projects in **58** Countries
More than **65 Billion USD** Historical Contract Value

46th @ ENR Top 250 International Contractors List - 2025
More than **20,000** Employees



OIL, GAS & PETROCHEMICALS



POWER PLANTS



INFRASTRUCTURE



BUILDING WORKS

BUSINESS LINES



STRUCTURAL
STEEL



OFFSHORE
STRUCTURES



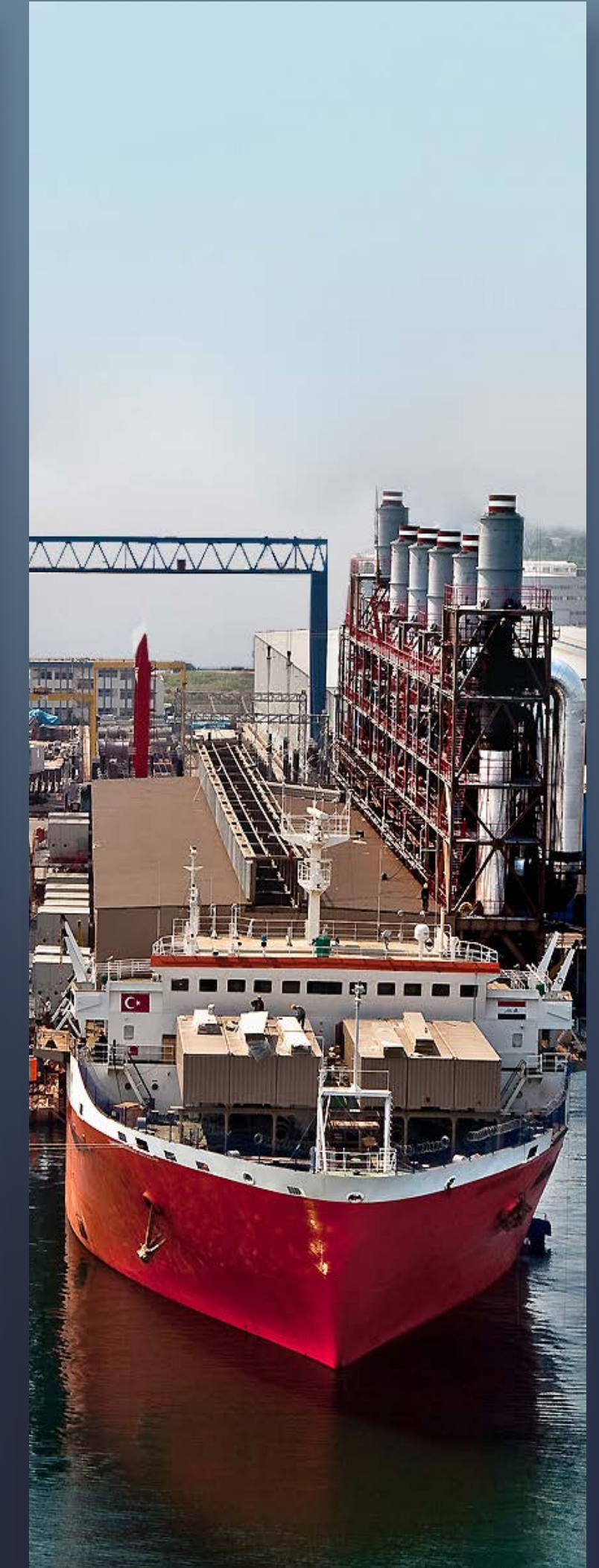
SUBSEA
STRUCTURES



MODULARIZATION

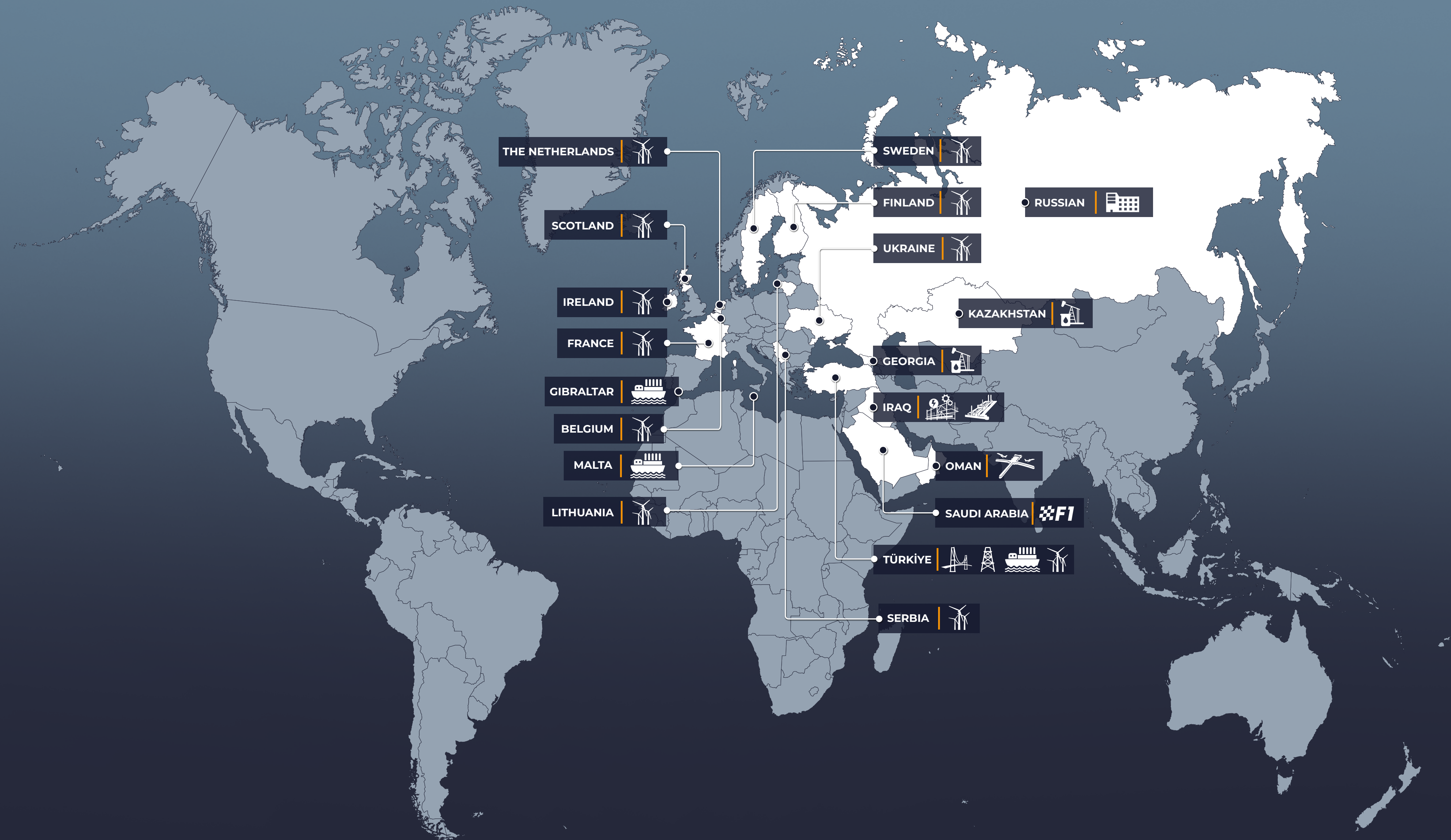


STEEL
WIND TOWERS



POWERSHIPS &
SHIPBUILDING

WORLDWIDE PROJECTS

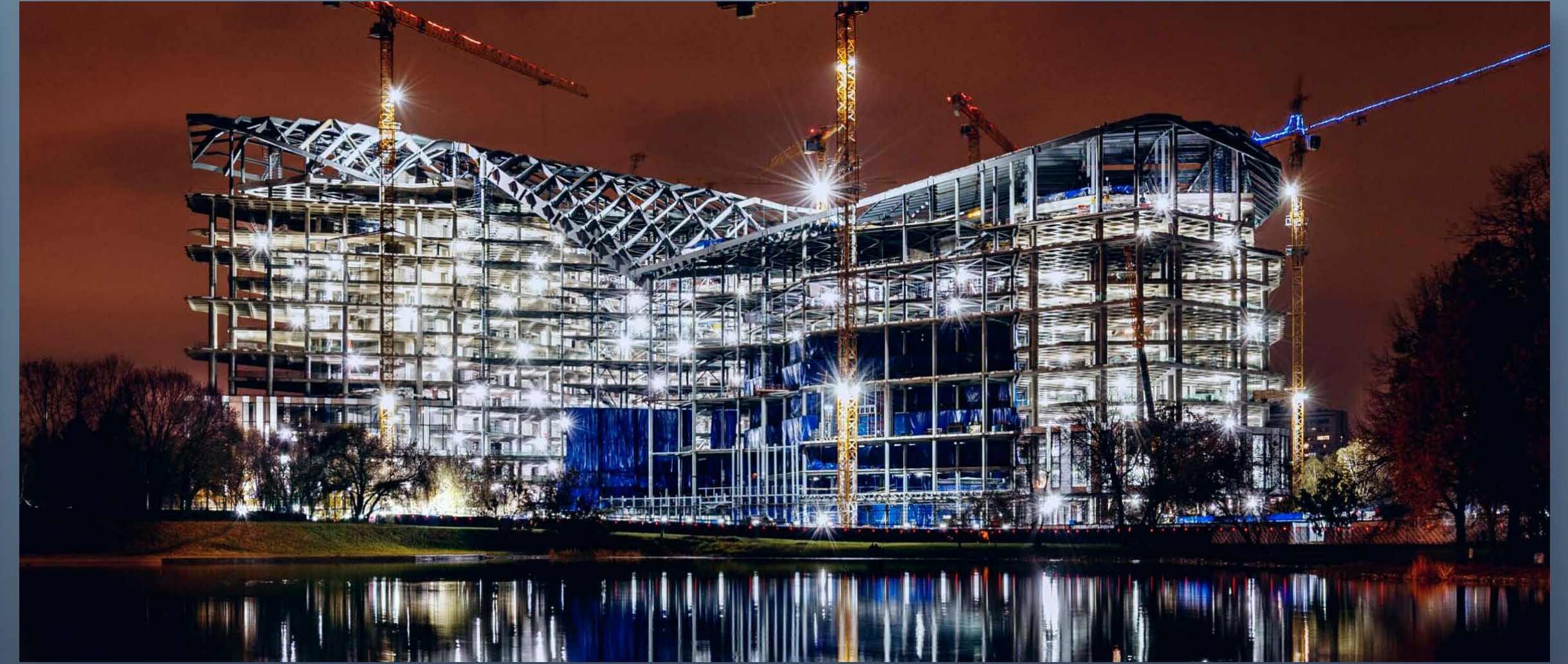


- ENGINEERING
- FABRICATION
- TRIAL ASSEMBLY
- COATING
- PROCUREMENT
- ASSEMBLY
- INSULATION
- SHIPMENT

STRUCTURAL STEEL



STEEL BRIDGES



STEEL BUILDINGS



AIRPORTS

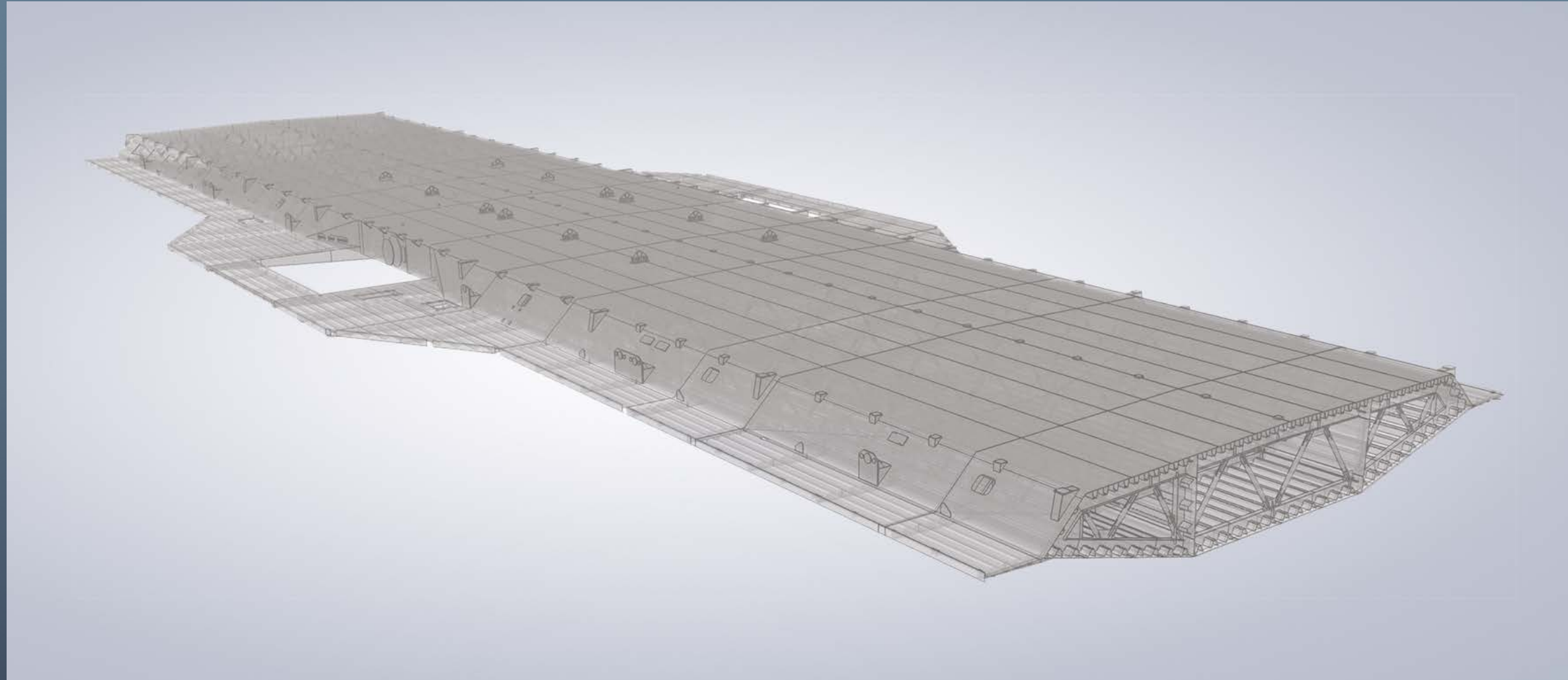


POWER, OIL & GAS PLANTS

OSMANGAZI SUSPENSION BRIDGE

52,000 t **1,550 m**
WEIGHT MAIN SPAN

OSMANGAZI SUSPENSION BRIDGE



3D MODEL



GIRDER BLOCK FORMATION



GIRDER BLOCK TRIAL ASSEMBLY



GIRDER BLOCK TRANSPORTATION

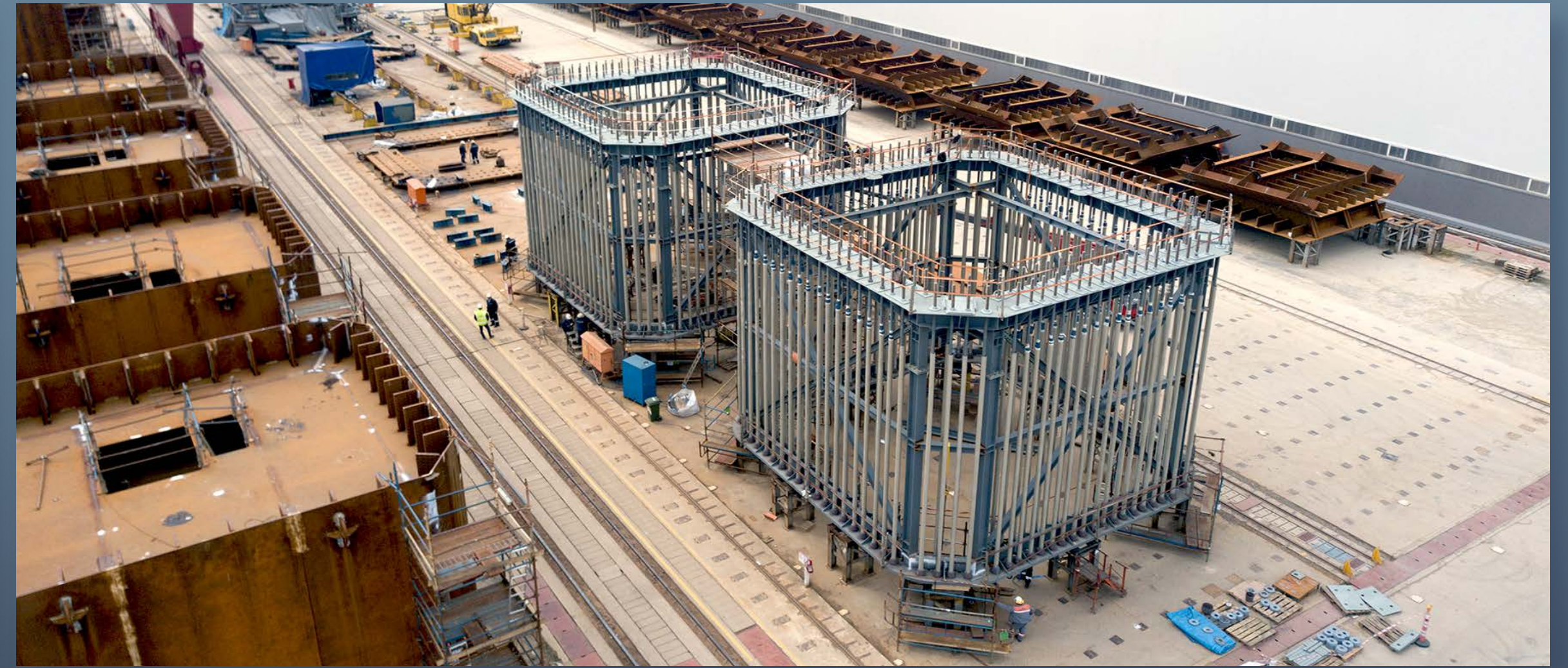
1915 ÇANAKKALE THE WORLD'S LONGEST SUSPENSION BRIDGE

105,000 t **2,023 m**
WEIGHT MAIN SPAN

1915 ÇANAKKALE SUSPENSION BRIDGE



STEEL SHAFT FABRICATION



ANCHOR FRAME FABRICATION



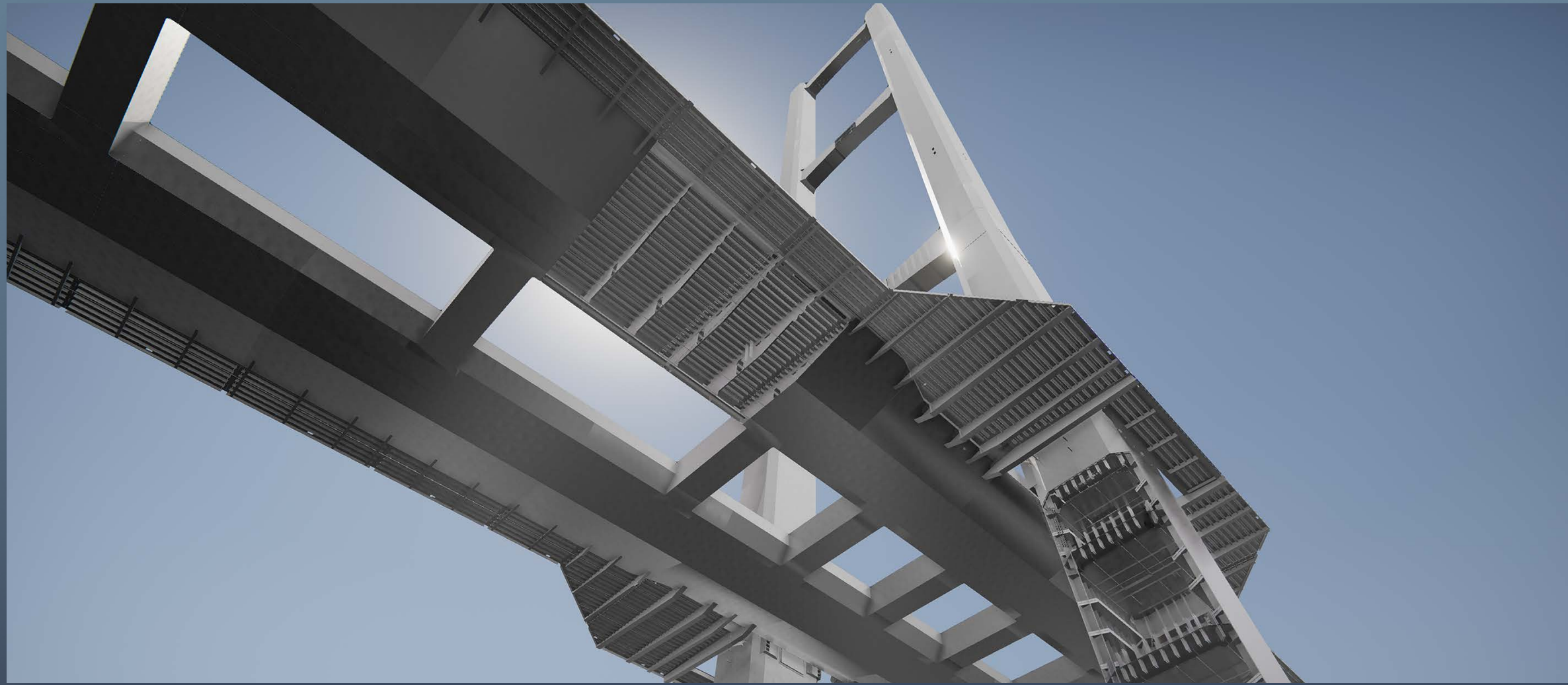
TOWER BLOCK FORMATION & TRIAL ASSEMBLY



STEEL SHAFT & TOWER BLOCK TRANSPORTATION



1915 ÇANAKKALE SUSPENSION BRIDGE



3D MODEL



GIRDER BLOCK FORMATION



GIRDER BLOCK TRIAL ASSEMBLY



GIRDER BLOCK TRANSPORTATION

1,200 SECTION/YEAR 70,000 TONS/YEAR



COLD PLATE ROLLING & PRECISE MACHINING & AUTOMATED WELDING

STEEL WIND TOWERS



PAINTING & INTERNALS ASSEMBLY



SECTION 45 m Length



TRANSPORTATION 11 Countries

- JACKET
- STINGER
- BOAT LANDING
- CONDUCTOR
- DRIVEN / DRILLED PILES
- RISERS

SUBSEA STRUCTURES



JACKETS 3D MODEL



JACKETS FABRICATION



JACKET LOAD-OUT



JACKET OFFSHORE INSTALLATION

- RIGID SPOOL
- SUCTION PILES
- SUCTION ANCHOR
- MANIFOLD
- SLIDING FRAME
- INSTALL AT ION AIDS

SUBSEA STRUCTURES



RIGID SPOOL



SUCTION PILE



MANIFOLD



INSTALLATION AIDS



- ENGINEERING
- FABRICATION
- TRIAL ASSEMBLY
- COATING
- PROCUREMENT
- E&I WORKS
- INSULATION
- SHIPMENT

MODULARIZATION



MODULARIZATION WORKS



MODULE TRIAL ASSEMBLY



MODULE TRANSPORTATION



MODULE LOAD-OUT

- POWERSHIPS
- SPECIAL SERVICE VESSELS
- BARGES
- TANKERS

POWERSHIPS & SHIPBUILDINGS



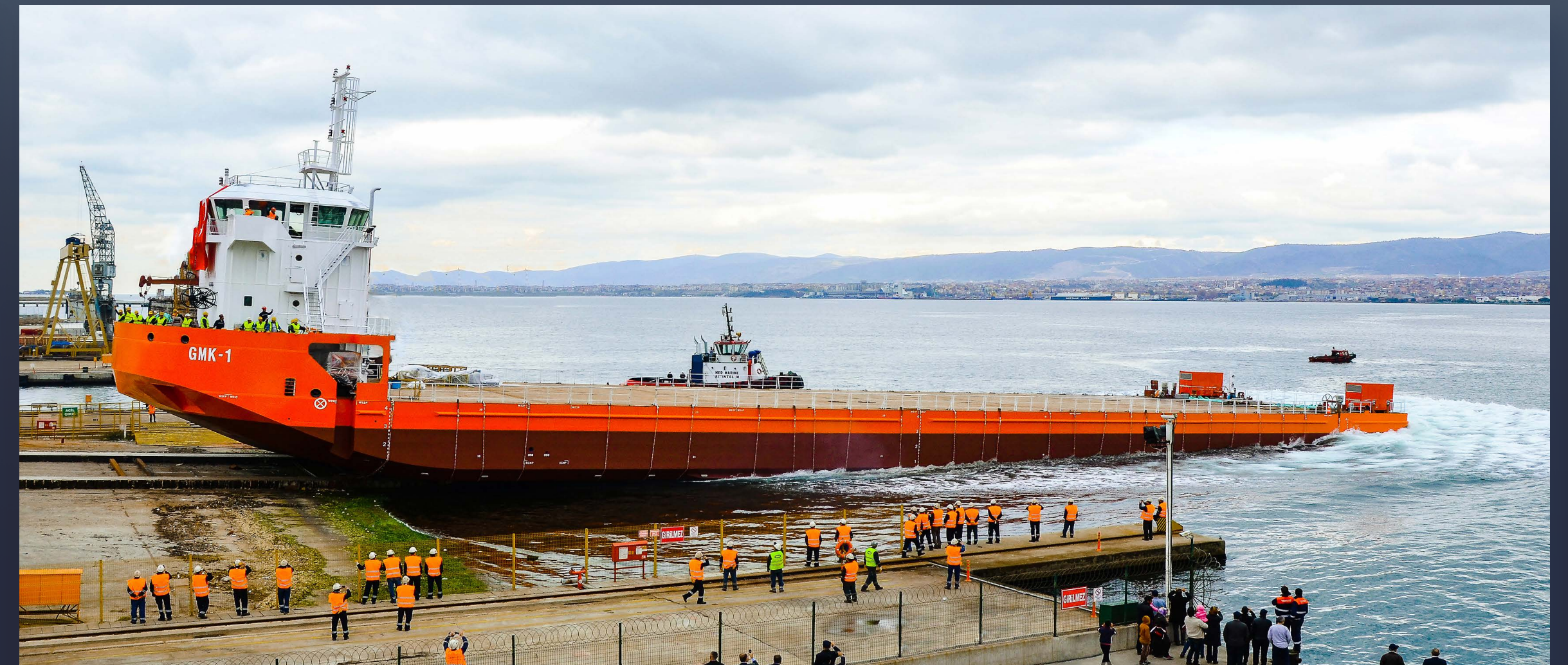
POWERSHIP



POWERSHIP



TANKER

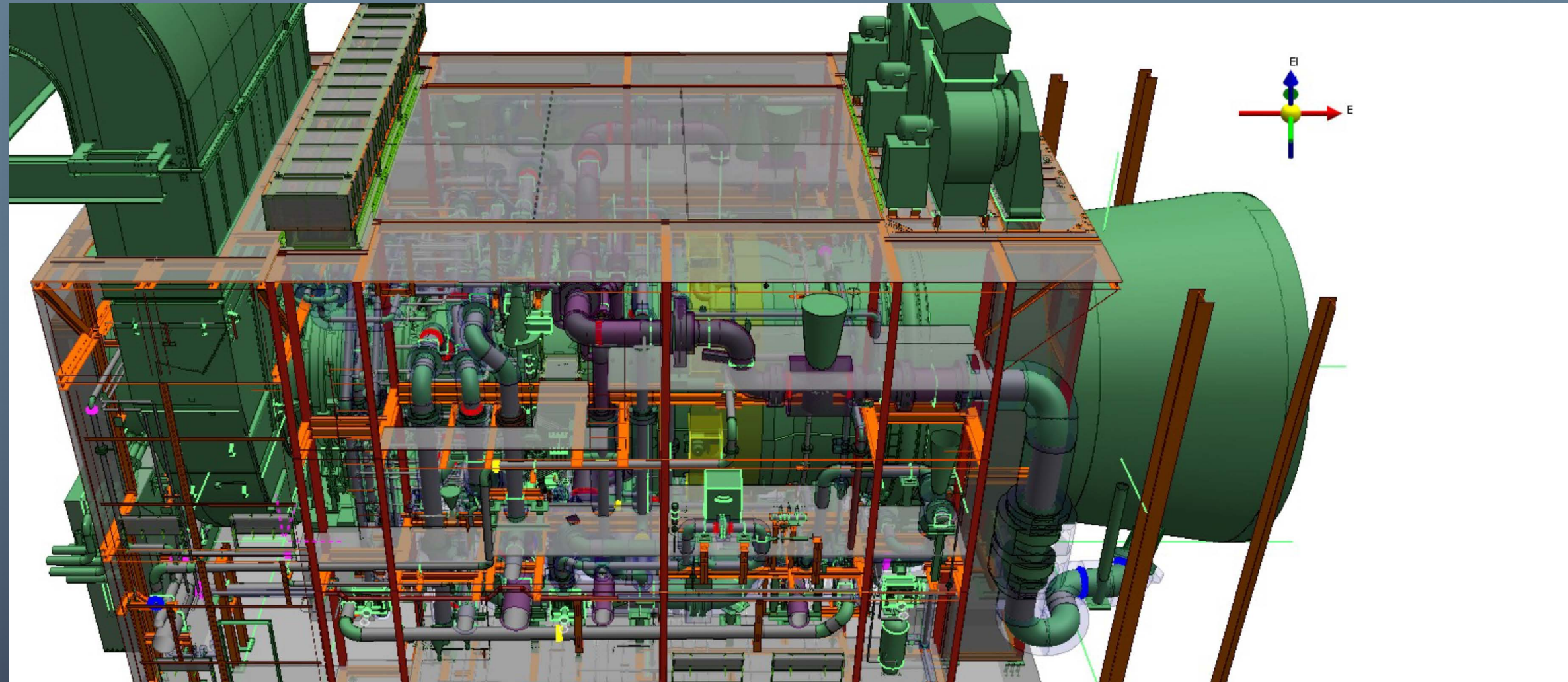


DYNAMIC POSITIONING SERVICE VESSEL

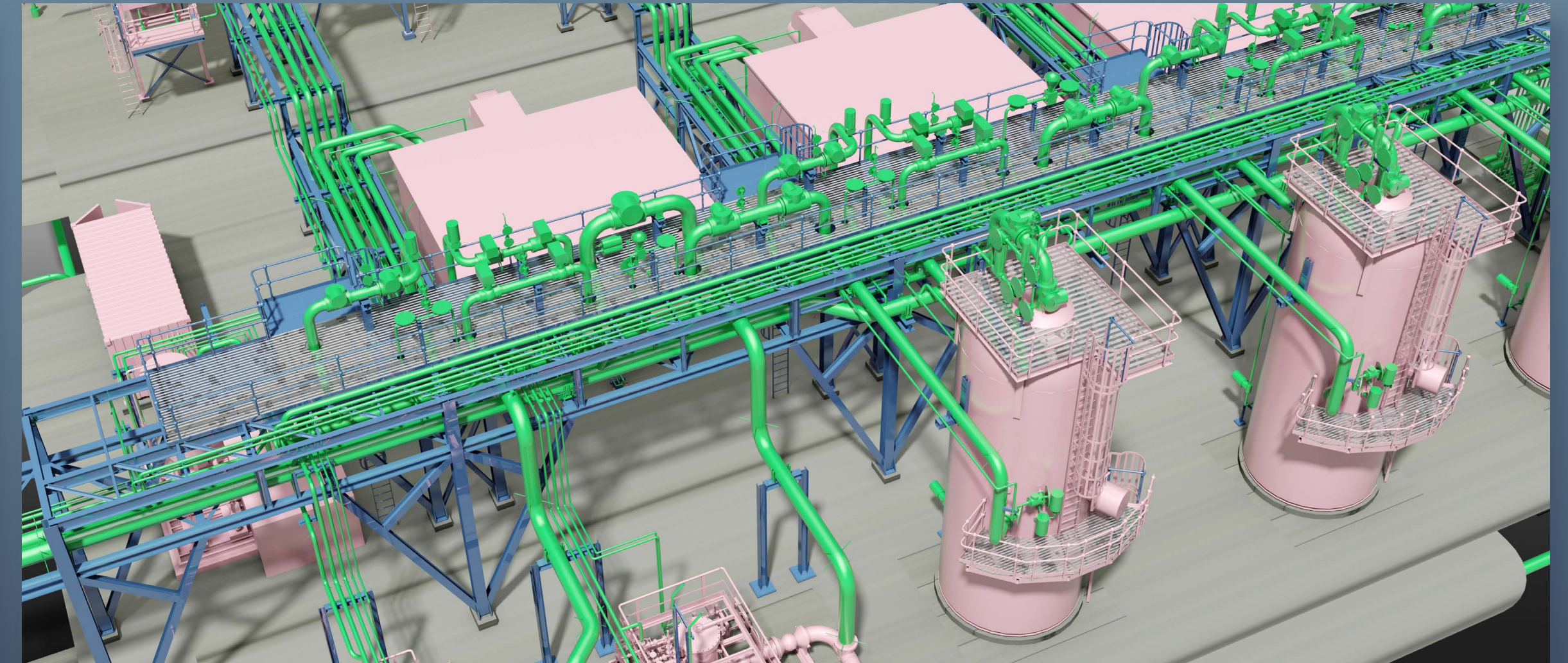
- PLANT & PIPING DESIGN
- MECHANICAL DESIGN & FEA ANALYSIS
- PRESSURE VESSEL DESIGN

- ELECTRICAL & INSTRUMENT DESIGN
- 3D MODELLING for all DISCIPLINES
- CIVIL, STRUCTURAL & MODULAR DESIGN

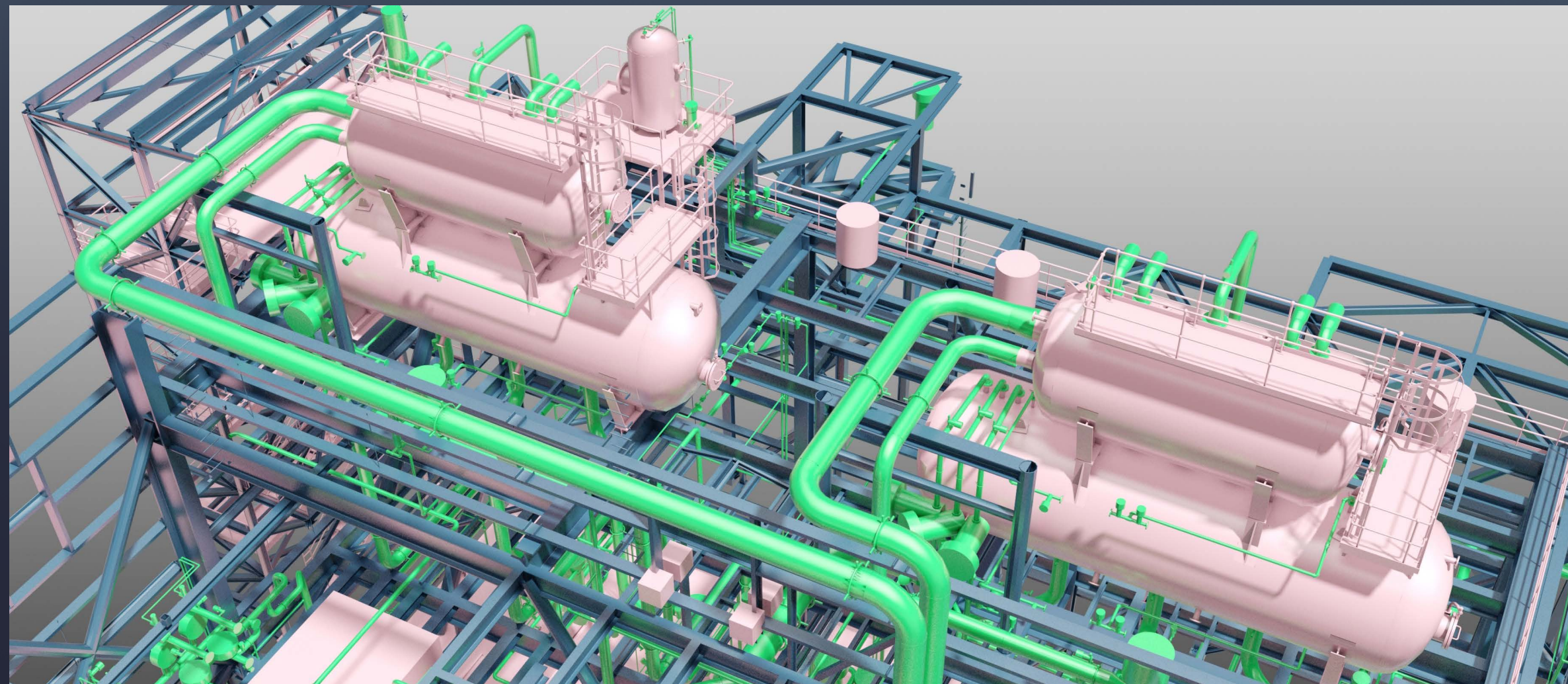
ENGINEERING



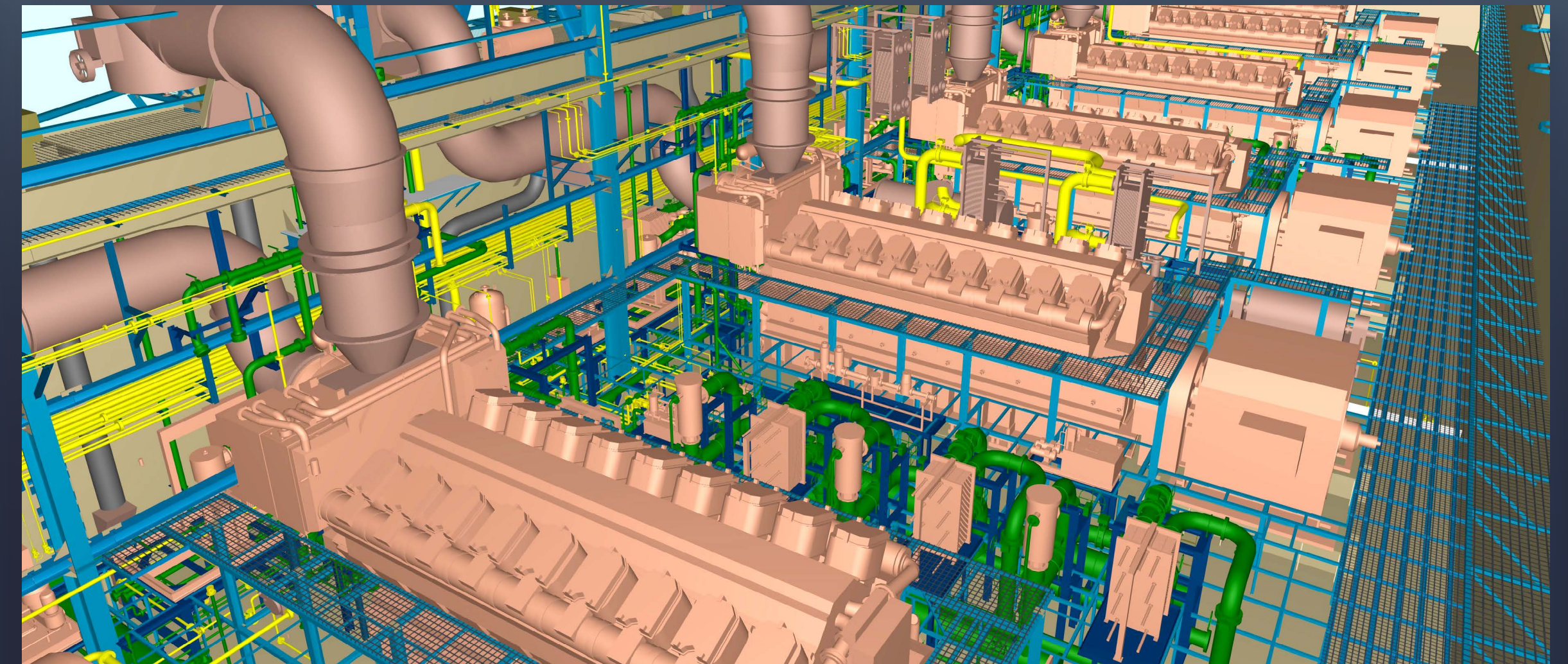
MHI GAS TURBINE MODULAR ENCLOSURE



WEST QURNA-2 OILFIELD



BAZYAN CCPP



KPS-6 POWERSHIP

OPERATIONS



CNC PLATE BENDING



5-AXIS CNC MACHINING



ROBOTIC - AUTOMATED - MANUAL WELDING



CNC PROFILE CUTTING - DRILLING

OPERATIONS



CNC CUTTING - WELDING



COLD PLATE ROLLING

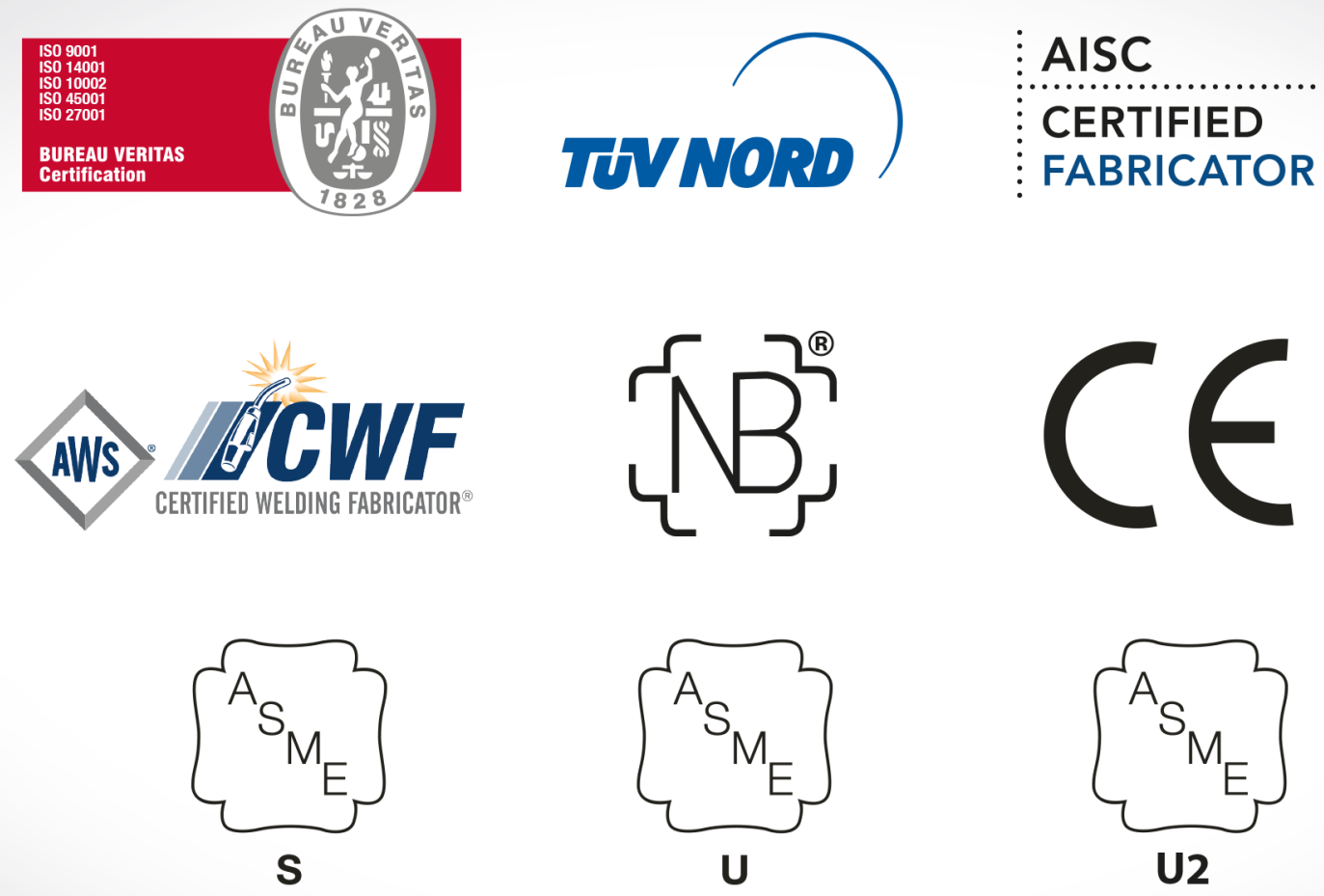


CNC CUTTING - WELDING



BLASTING - PAINTING

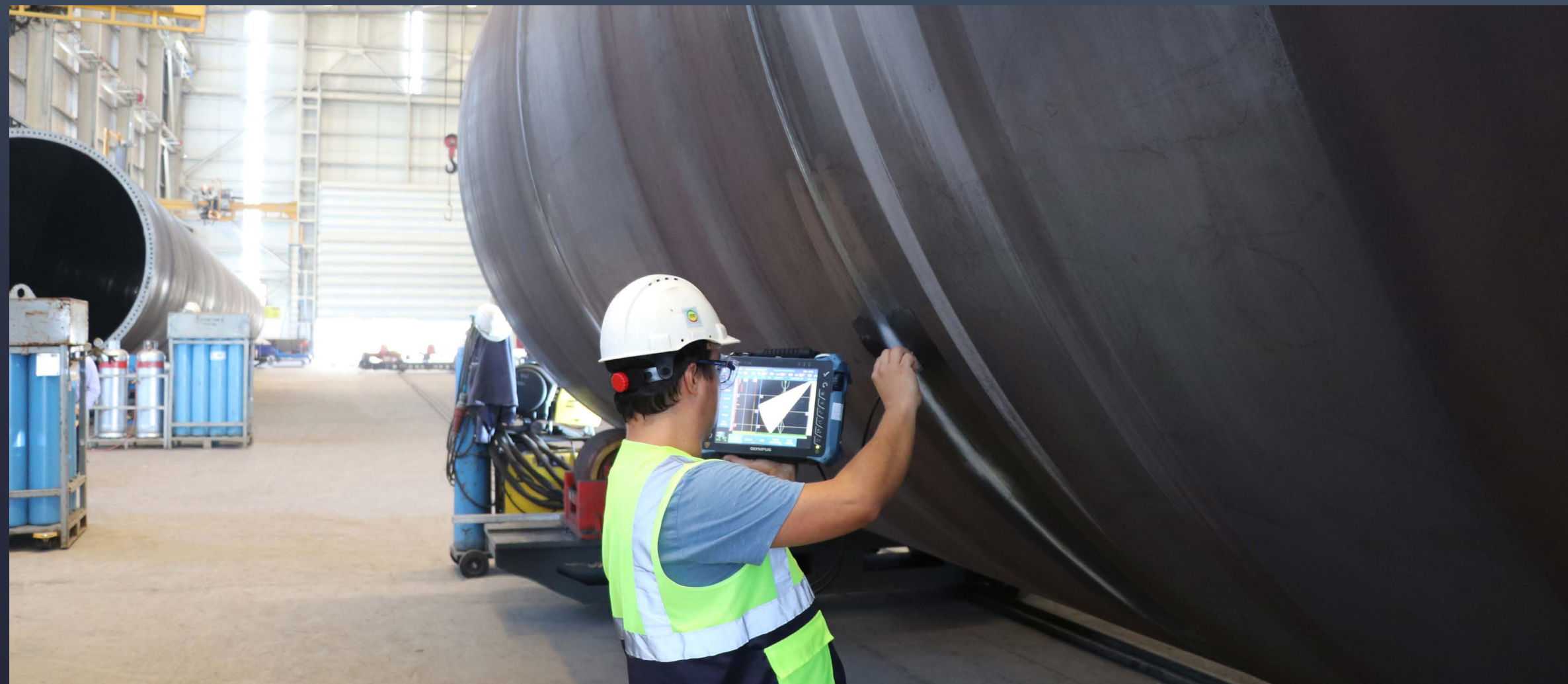
OPERATIONS



CERTIFIED QUALITY MANAGEMENT SYSTEMS



INDEPENDENT QA&QC ORGANIZATION



IN-HOUSE CERTIFIED NDE PERSONNEL



PRECISION in QUALITY CONTROL

LOGISTICS



DIRECT SEA ACCESS



3 INTERNATIONAL DEEP SEA PORTS



OWN LAND & SEA FLEET



IN-HOUSE LOGISTICS ORGANIZATION

ACCESS MAP



GROUP COMPANIES



cintas | steel

Fenced Area : 160,000 m²
Covered Area : 62,000 m²
Number of Employees : 2,000
Annual Fab. Capacity : 80,000 t



cintas | pipe

Fenced Area : 120,000 m²
Covered Area : 75,000 m²
Number of Employees : 1,000
Annual Spool Fab. Capacity : 42,000 t
Pipe-Fitting Manufacturing : 165,000 t
Annual Fittings Capacity : 6.000 t
Annual LSAW Process Pipe Capacity : 40.000 t
Annual LSAW Line Pipe Capacity : 160.000 t



cintas | ningbo

Fenced Area : 56,000 m²
Covered Area : 32,000 m²
Number of Employees : 650
Annual Fab. Capacity : 20,000 t



cintas | machining

Fenced Area : 13,000 m²
Covered Area : 12,000 m²
Number of Employees : 300

SUSTAINABILITY

Çimtaş, along with the efforts to attain its wide-range social and economic sustainability goals, is striving to reduce its environmental footprint with all solar-powered facilities, paperless processes and responsible water & waste management approach; and by caring for an olive yard with a tree for each of its employees, a special olive kind awarded with protected designation of origin (PDO) status by the European Union at region where Çimtaş's core facilities are located.



THANK YOU
FOR MORE

www.cimtas.com

