

COMPANY OVERVIEW

2026







# cimtas | pipe

# WHO WE ARE

**4 Million DIA"**  
SPOOL FABRICATION  
CAPACITY

**100,000 t**  
LSAW PIPE  
CAPACITY

**6,000 t**  
FITTINGS  
CAPACITY

  
Gemlik FTZ / Türkiye  
120,000 m<sup>2</sup>

CIMTAS PIPE is a market-leading company providing engineering, procurement, manufacturing of LSAW pipes and fittings, fabrication of pipe spools for power, oil, gas, nuclear and mining industry with the best in class vision.



More than **590** Projects in **60** Countries  
More than **67 Billion USD** Historical Contract Value

**46<sup>th</sup>** @ ENR Top 250 International Contractors List - 2025  
More than **25,000** Employees



OIL, GAS & PETROCHEMICALS



POWER PLANTS



INFRASTRUCTURE



BUILDING WORKS



# BUSINESS LINES



LSAW PIPE  
WORKS



SPOOL  
WORKS



FITTING  
WORKS



# WORLDWIDE PROJECTS





50,000 ton  
PROCESS PIPE

100,000 ton  
LINE PIPE

CS-SS-ALLOY  
METALLURGY

16" to 64"  
RANGE

LSAW PIPE WORKS



JCO FORMING



CALIBRATION



HEAT TREATMENT

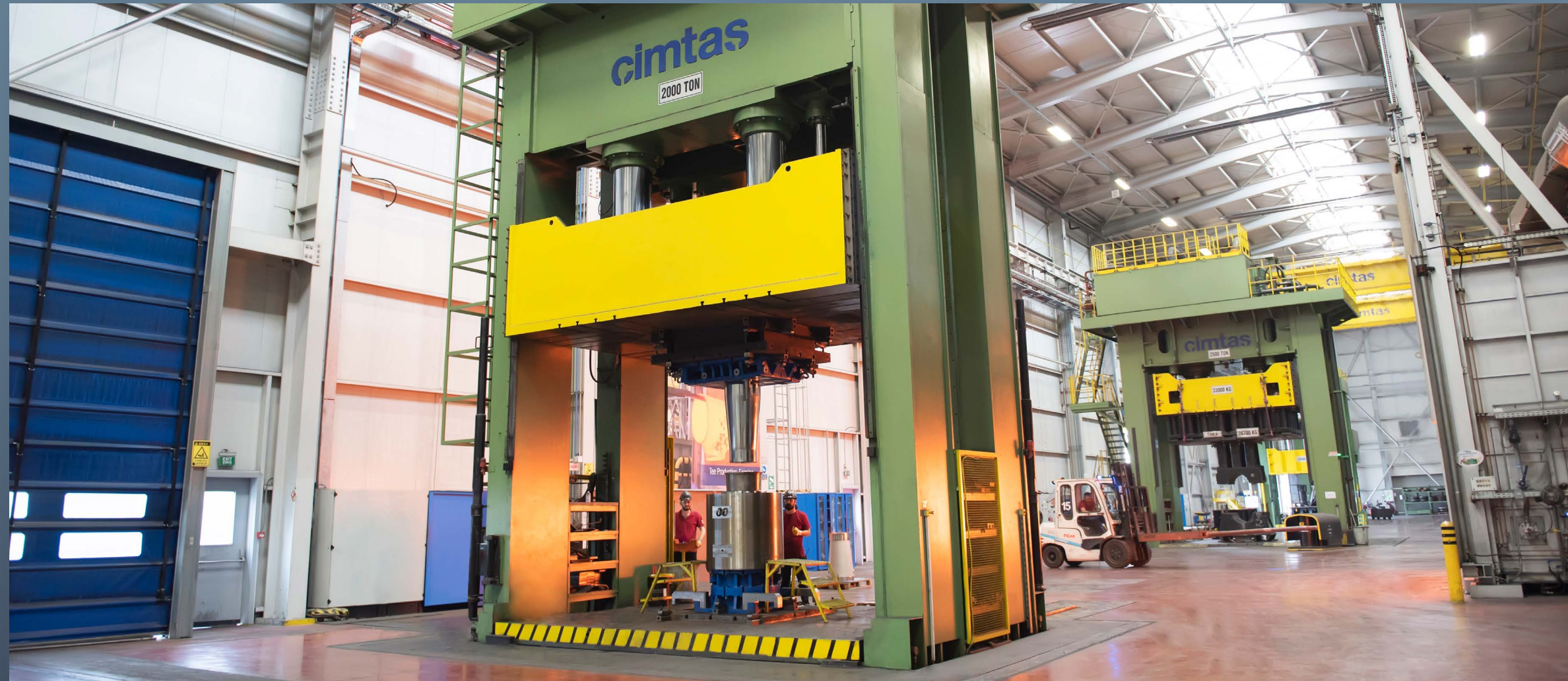


FULL BODY MECHANICAL EXPANDER



6,000 ton / 25,000 EA CS-SS-ALLOY 0.5" to 60"  
FITTING METALLURGY RANGE

# FITTING WORKS



HOT FORMING



HOT FORMING BY MANDREL



COLD FORMING



INDUCTION BENDING



# 50,000 ton/ 4 Million DIA" PIPE SPOOL

# SPOOL WORKS



PIPE SPOOL FABRICATION



SKID & MODULES



PIPE SPOOL FABRICATION



PACKAGING & TRANSPORTATION



# BECHTEL PROJECTS

## SEMPRA PROGRAM

- PORT ARTHUR LIQUEFACTION PROJECT PHASE 1 - 28,000 tons, 1.64M wdi
- PORT ARTHUR LIQUEFACTION PROJECT PHASE 2 - 28,000 tons, 1.64M wdi



# BECHTEL PROJECTS

## NEXTDECADE PROGRAM

- RIO GRANDE LIQUEFACTION PROJECT TRAINS 1 & 2 & 3 - 37,000 tons, 2.8M wdi
- RIO GRANDE LIQUEFACTION PROJECT TRAINS 4 & 5 - 20,500 tons, 1.5M wdi





# BECHTEL PROJECTS

## CHENIERE PROGRAM

- SABINE PASS LIQUEFACTION PROGRAM - 41,000 tons, 2.65M wdi
- CORPUS CHRISTI LIQUEFACTION PROGRAM - 42,000 tons, 3.85M wdi



# BECHTEL PROJECTS

## WOODSIDE PROGRAM

- PLUTO TRAIN 2 LNG PROJECT - 17,850 tons, 930K wdi
- LOUISIANA LNG PROJECT PHASE 1 & 2 - 36,000 tons, 2.3M wdi



## OIL, GAS & PETROCHEMICALS

- SOUTH CAUCACUS PIPELINE EXPANSION PROJECT
- WEST QURNA I PRODUCED WATER 2
- SAKHALIN II PROJECT

## POWER PLANTS

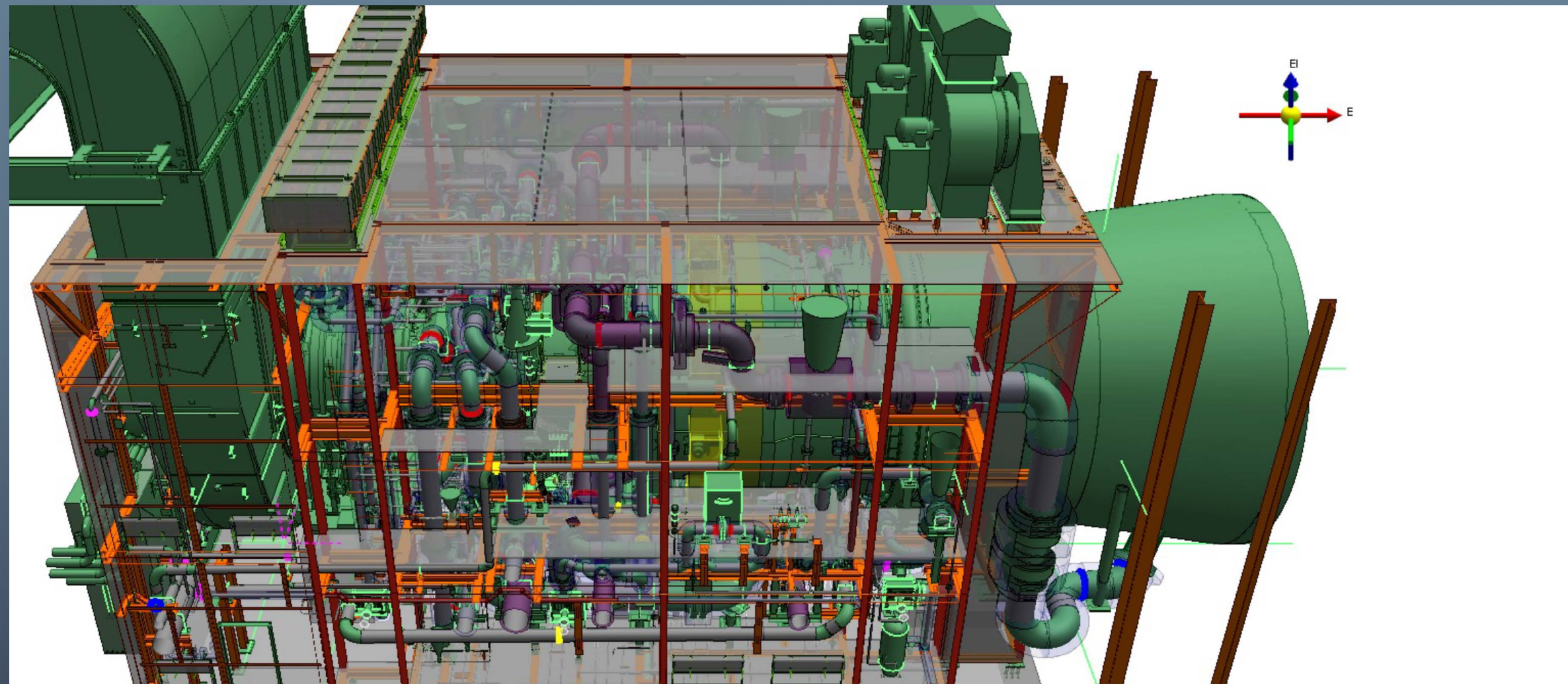
- HINKLEY POINT C
- DHI-QAR CCPP
- TRIPOLI SCPP
- VERBENA KIRKLARELI CCPP
- SAMAWA CCPP
- DRADENAU



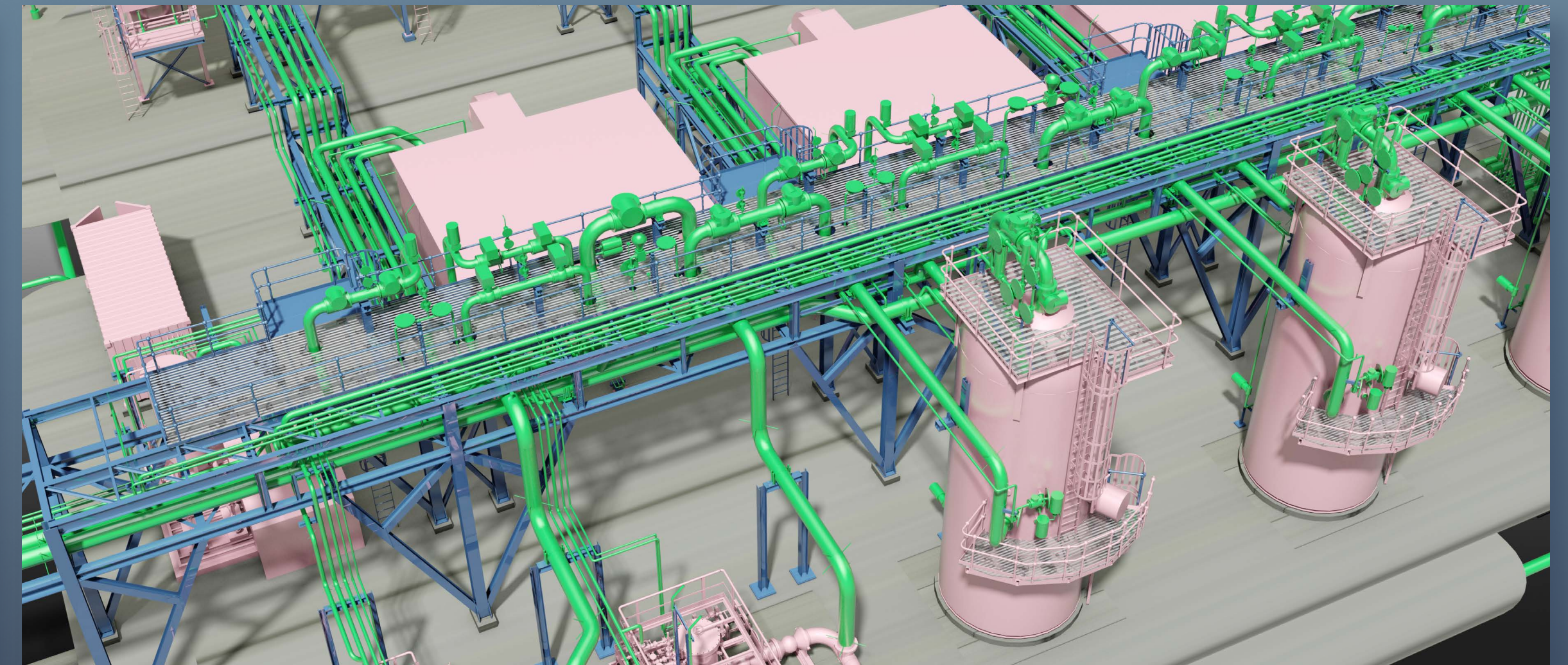
- PLANT & PIPING DESIGN
- MECHANICAL DESIGN & FEA ANALYSIS
- PRESSURE VESSEL DESIGN

- ELECTRICAL & INSTRUMENT DESIGN
- 3D MODELLING for all DISCIPLINES
- CIVIL, STRUCTURAL & MODULAR DESIGN

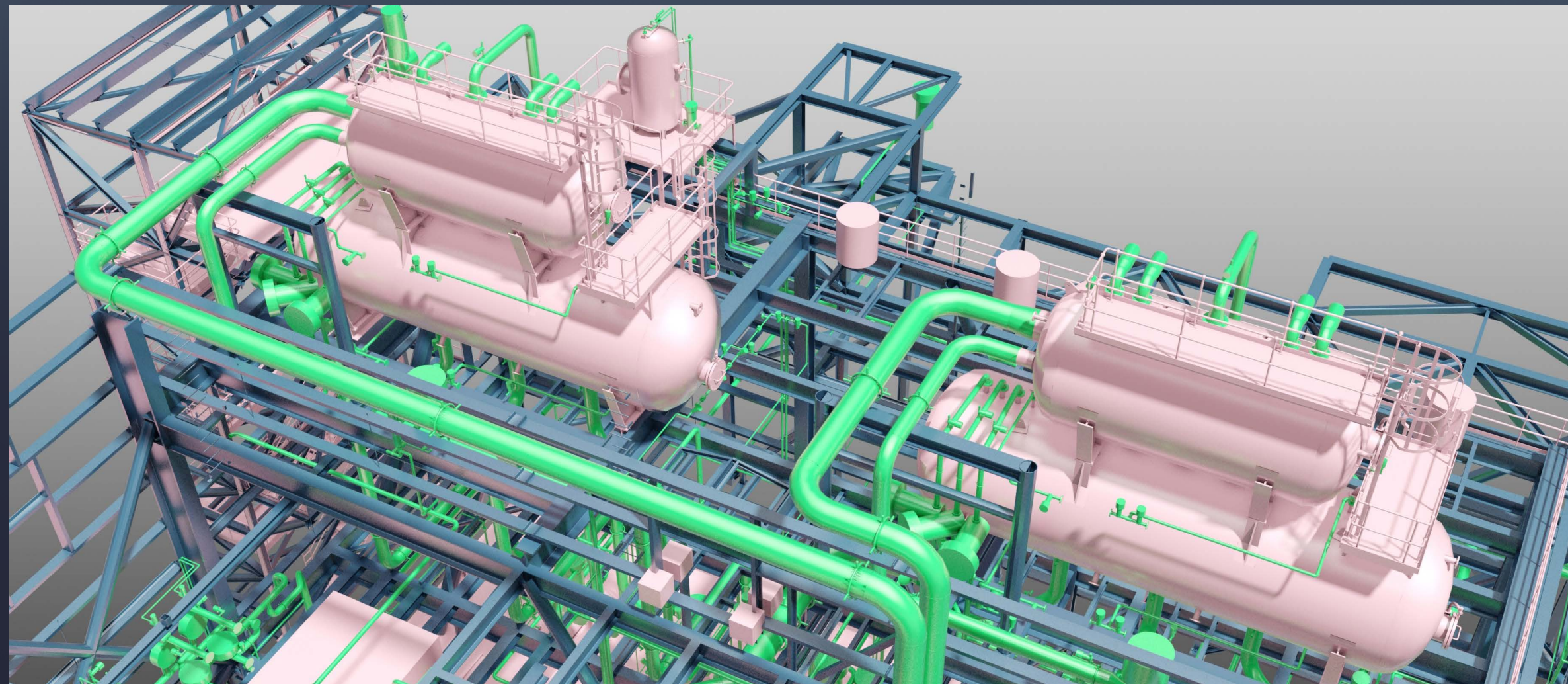
# ENGINEERING



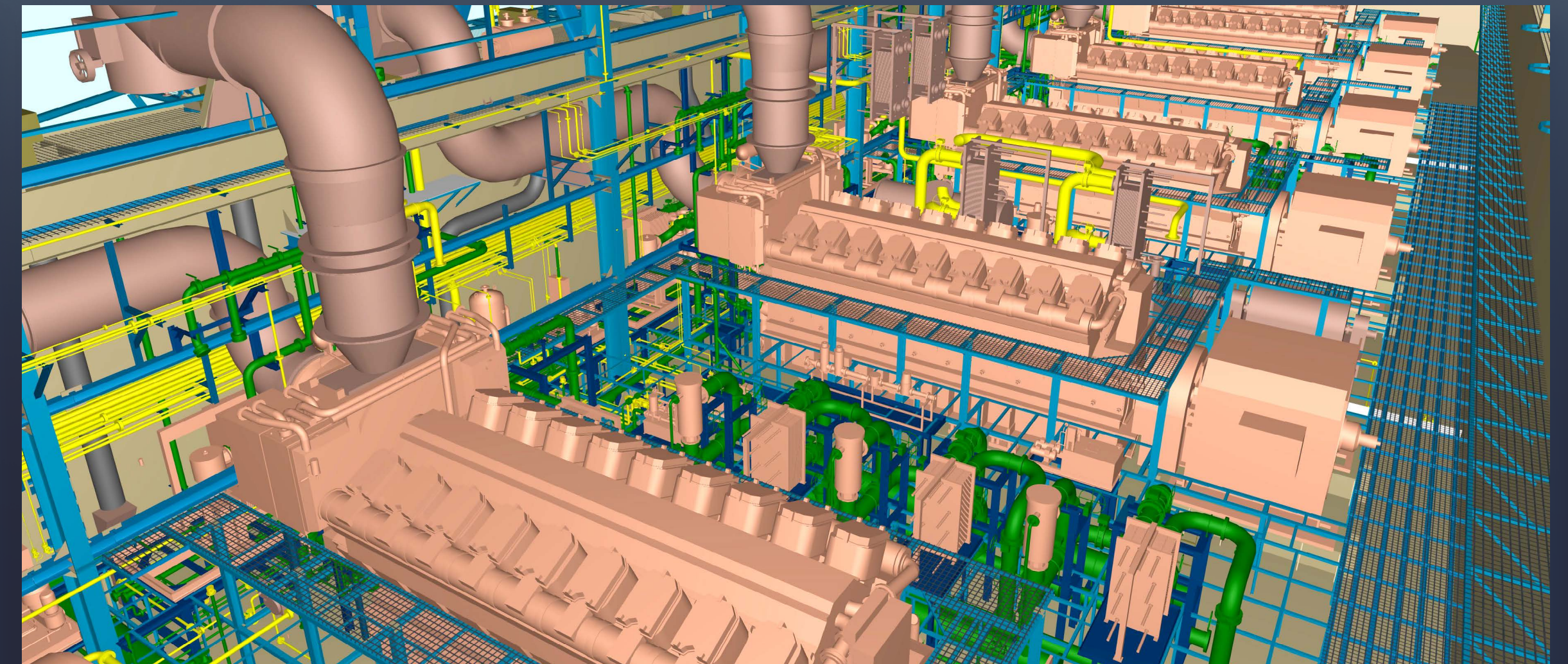
MHI GAS TURBINE MODULAR ENCLOSURE



WEST QURNA-2 OILFIELD



BAZYAN CCPP



KPS-6 POWERSHIP



- +100 ENGINEERS
- 25 FABRICATION HALLS
- 5-AXIS MACHINING
- INDOOR/OUTDOOR MODULE ASSEMBLY
- COLD and INDUCTION BENDING
- MECHANIZED & ROBOTIC WELDING

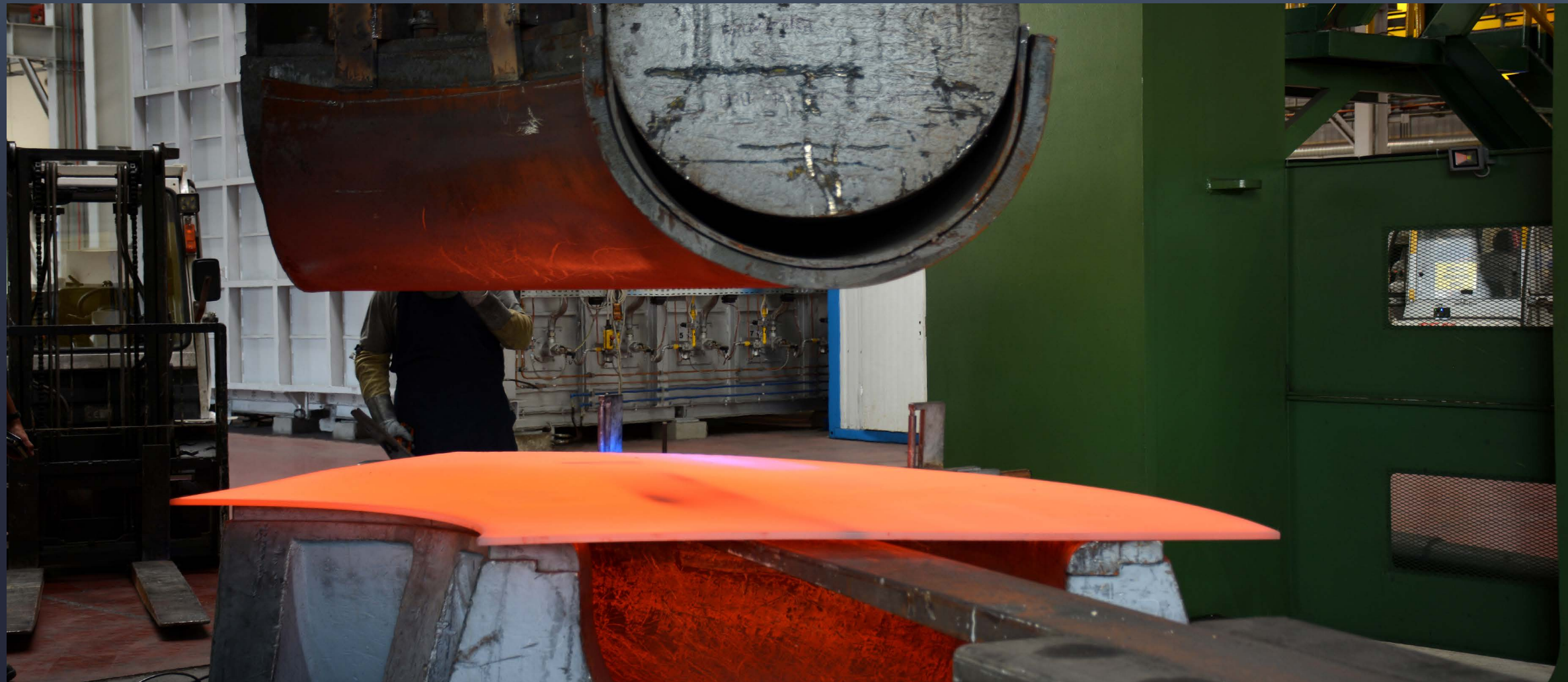
# OPERATIONS



NORMALIZING



TEE FORMING



2 HALVES



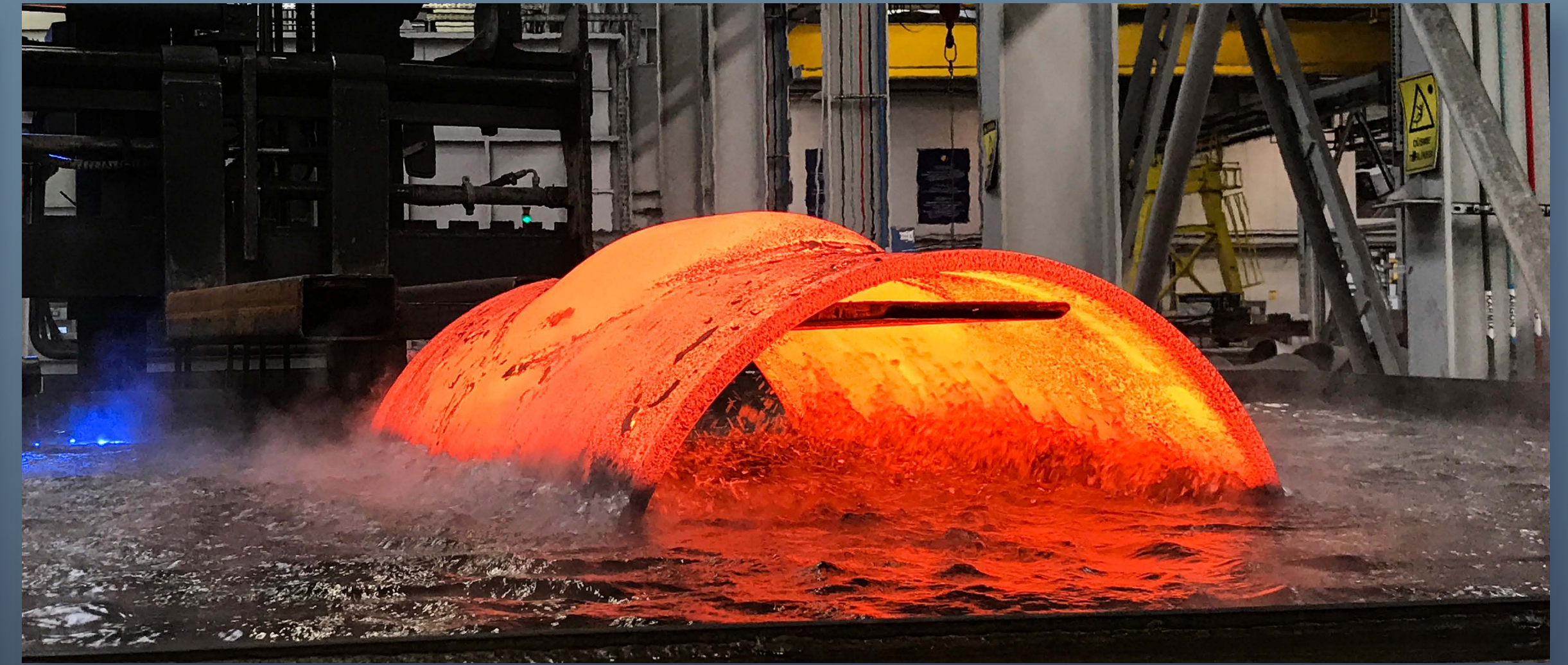
VERTICAL DIE



# OPERATIONS



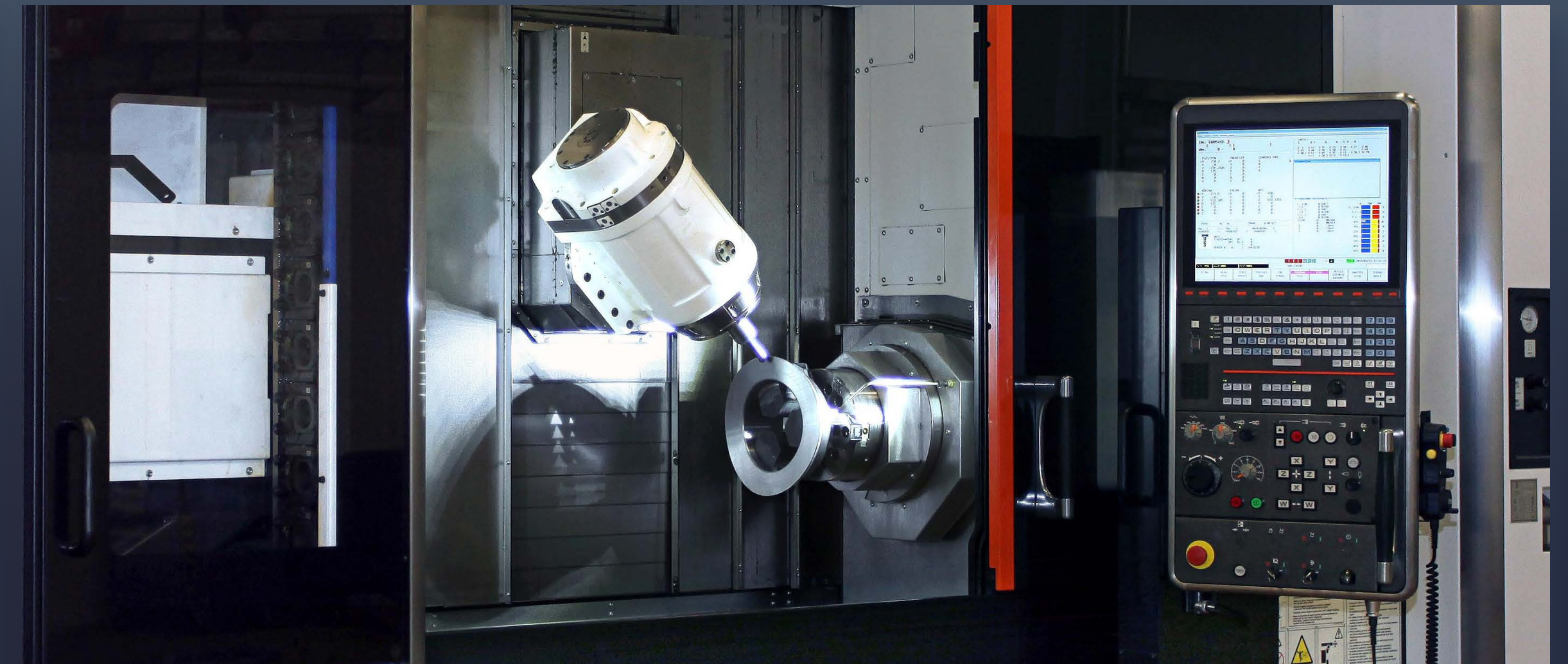
WELDING



QUENCHING



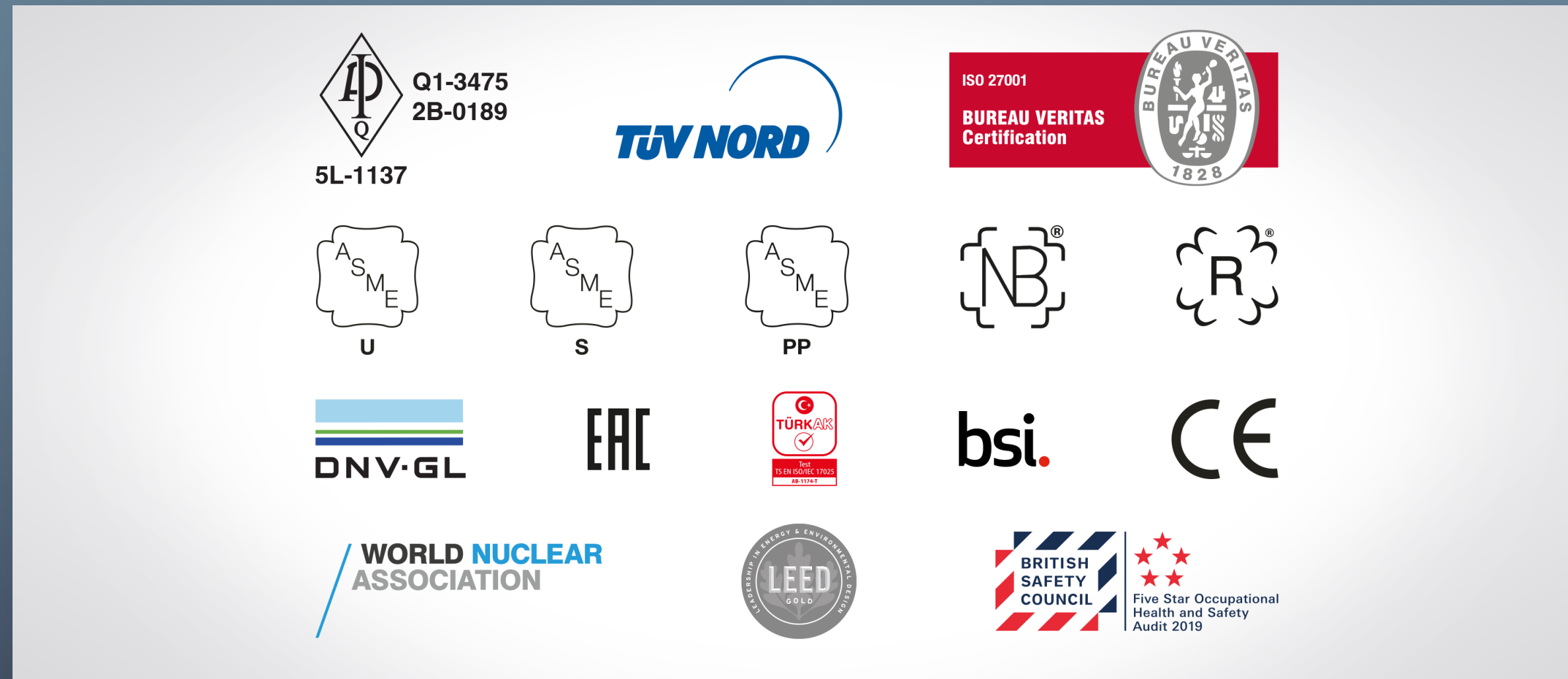
MACHINING



MACHINING



# QUALITY



CERTIFIED QUALITY MANAGEMENT SYSTEMS



INDEPENDENT QA&QC ORGANIZATION



IN-HOUSE CERTIFIED NDE PERSONNEL



MECHANICAL & METALLOGRAPHIC TEST LABORATORY



# GROUP COMPANIES



## cintas | steel

Fenced Area : 160,000 m<sup>2</sup>  
Covered Area : 62,000 m<sup>2</sup>  
Number of Employees : 2,000  
Annual Fab. Capacity : 80,000 t



## cintas | shipyard

Fenced Area : 270,000 m<sup>2</sup>  
Covered Area : 55,000 m<sup>2</sup>  
Number of Employees : 1,400  
Annual Fab. Capacity : 80,000 t



## cintas | ningbo

Fenced Area : 56,000 m<sup>2</sup>  
Covered Area : 32,000 m<sup>2</sup>  
Number of Employees : 650  
Annual Fab. Capacity : 20,000 t



## cintas | machining

Fenced Area : 13,000 m<sup>2</sup>  
Covered Area : 12,000 m<sup>2</sup>  
Number of Employees : 500



# SUSTAINABILITY

Çimtaş, along with the efforts to attain its wide-range social and economic sustainability goals, is striving to reduce its environmental footprint with all solar-powered facilities, paperless processes and responsible water & waste management approach; and by caring for an olive yard with a tree for each of its employees, a special olive kind awarded with protected designation of origin (PDO) status by the European Union at region where Çimtaş's core facilities are located.





THANK YOU  
FOR MORE

[www.cimtas.com](http://www.cimtas.com)

