

COMPANY OVERVIEW  
2026







# cimtas | shipyard

# WHO WE ARE

**80,000 t**  
FABRICATION  
CAPACITY

**70,000 t**  
ASSEMBLY  
CAPACITY

**ZERO**  
INCIDENT  
POLICY

  
Kocaeli FTZ / Türkiye  
270,000 m<sup>2</sup>

ÇİMTAŞ SHIPYARD fabricates structural steel, steel wind towers, offshore & subsea structures, modules and sea vessels at its facility having vast assembly yards and a self-quay for direct sea transportation.



More than **590** Projects in **60** Countries  
More than **67 Billion USD** Historical Contract Value

**46<sup>th</sup>** @ ENR Top 250 International Contractors List - 2025  
More than **25,000** Employees



OIL, GAS & PETROCHEMICALS



POWER PLANTS



INFRASTRUCTURE



BUILDING WORKS



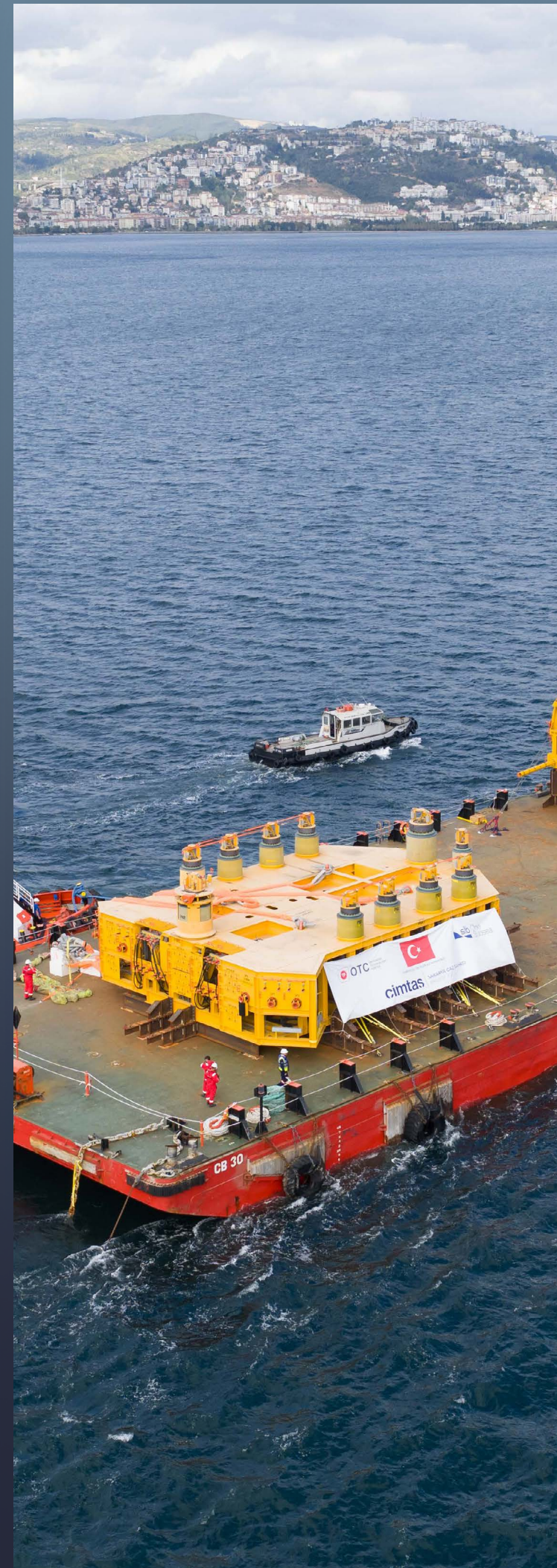
# BUSINESS LINES



STRUCTURAL  
STEEL



OFFSHORE  
STRUCTURES



SUBSEA  
STRUCTURES



MODULARIZATION



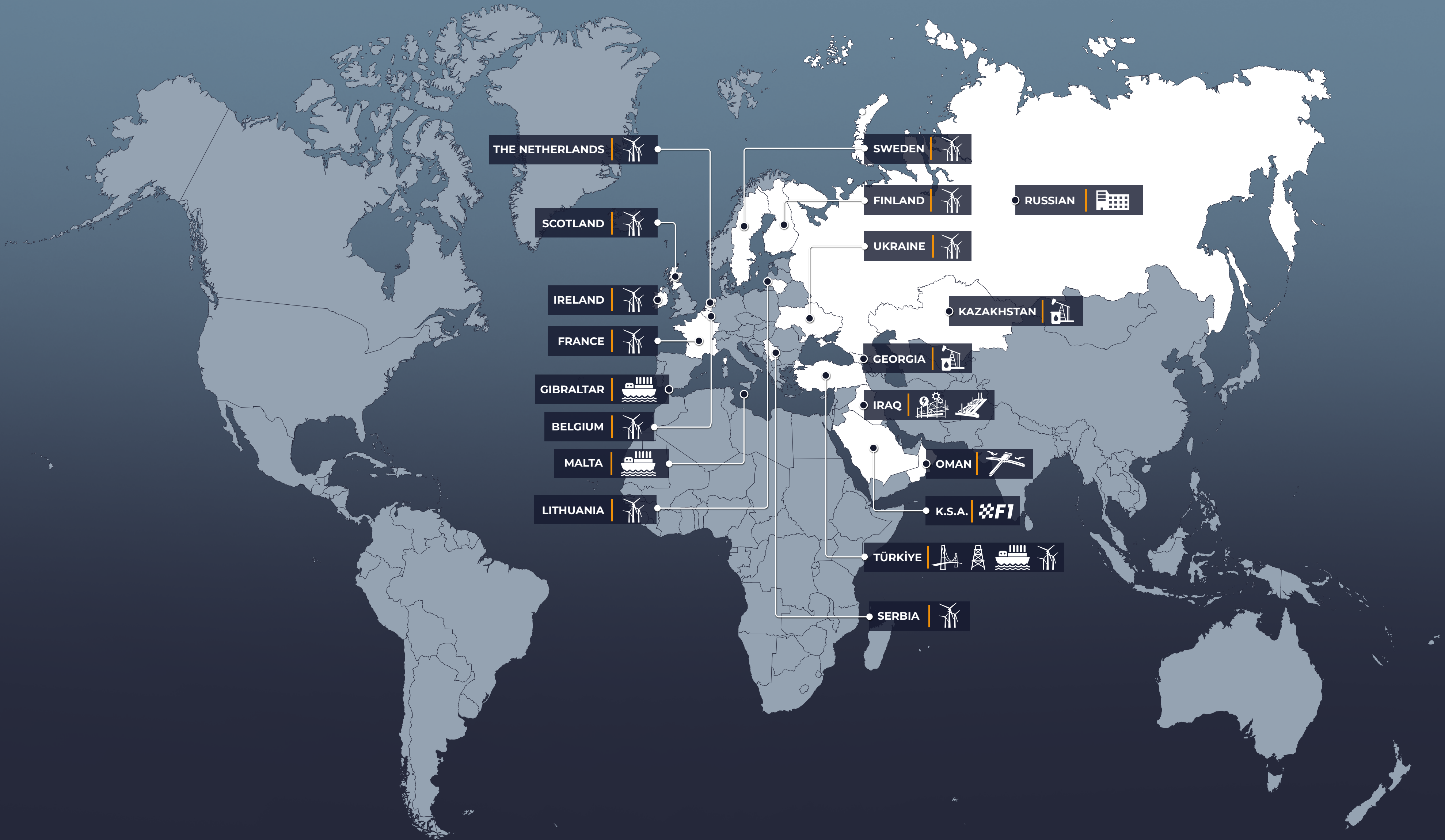
STEEL  
WIND TOWERS



POWERSHIPS &  
SHIPBUILDING



# WORLDWIDE PROJECTS



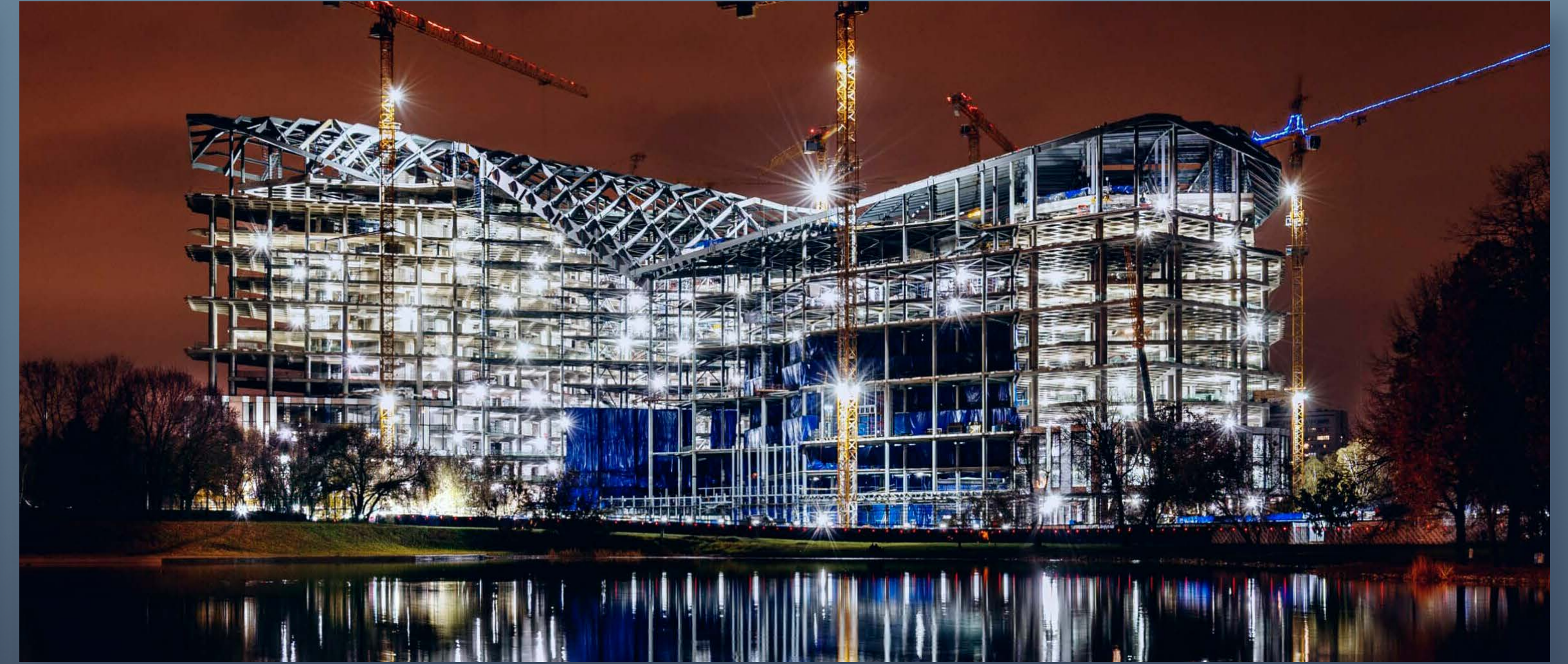


- ENGINEERING
- FABRICATION
- TRIAL ASSEMBLY
- COATING
- PROCUREMENT
- ASSEMBLY
- INSULATION
- SHIPMENT

# STRUCTURAL STEEL



STEEL BRIDGES



STEEL BUILDINGS



AIRPORTS



POWER, OIL & GAS PLANTS

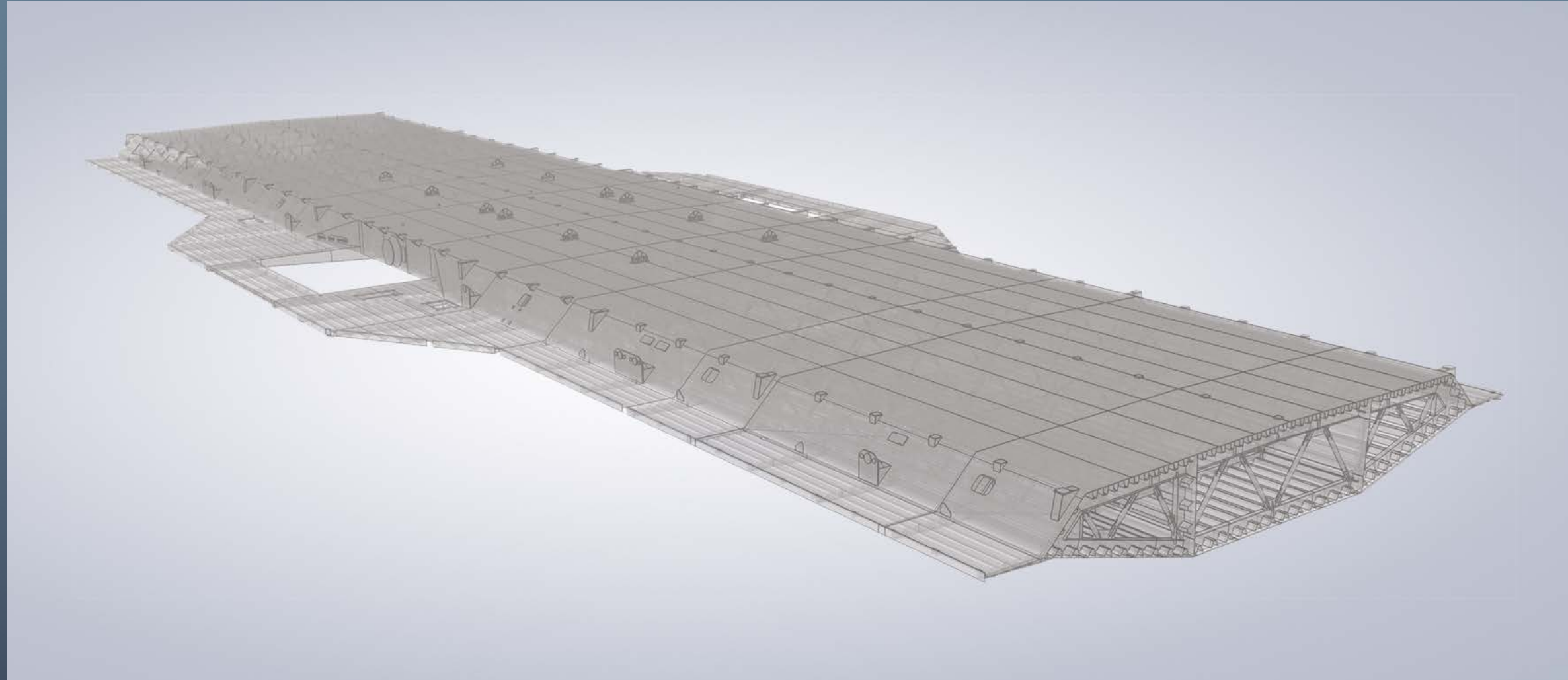


# OSMANGAZI SUSPENSION BRIDGE

**52,000 t** **1,550 m**  
WEIGHT MAIN SPAN



# OSMANGAZI SUSPENSION BRIDGE



3D MODEL



GIRDER BLOCK FORMATION



GIRDER BLOCK TRIAL ASSEMBLY



GIRDER BLOCK TRANSPORTATION



# 1915 ÇANAKKALE THE WORLD'S LONGEST SUSPENSION BRIDGE

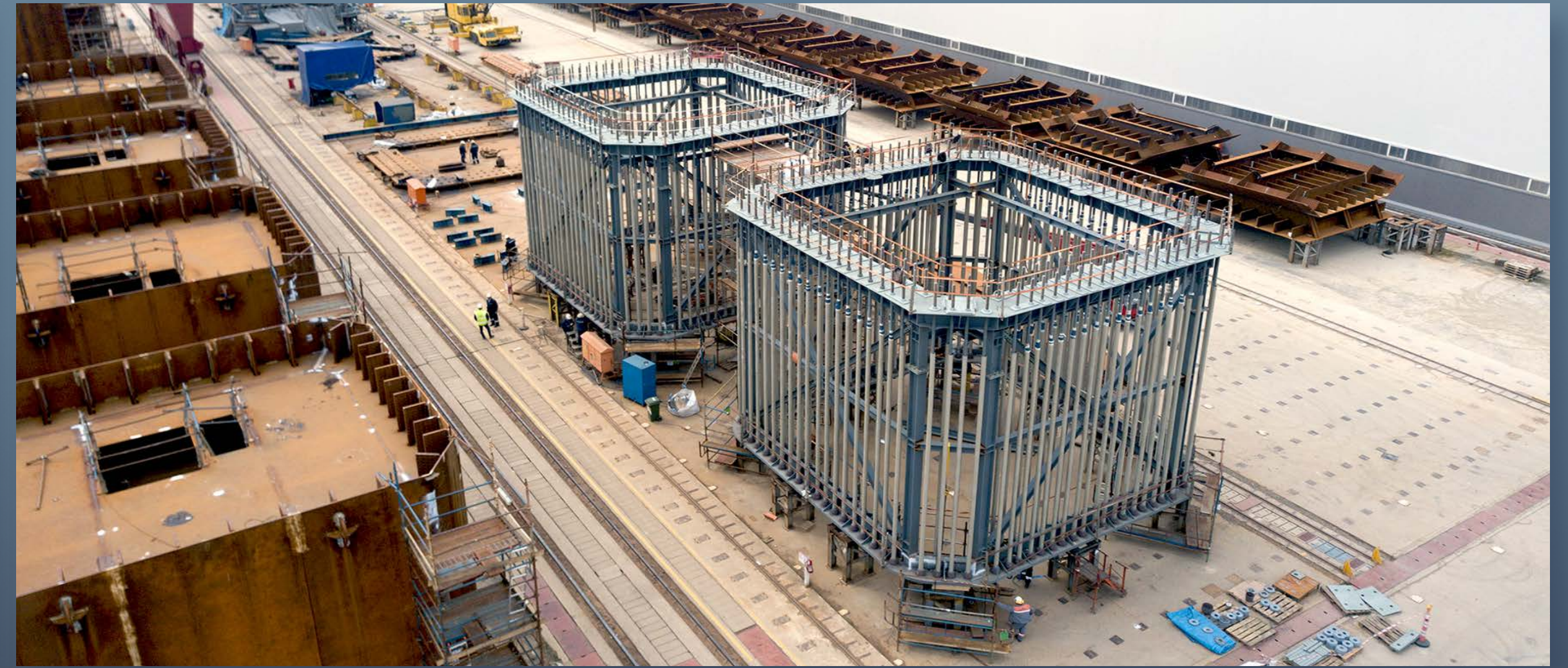
**105,000 t** **2,023 m**  
WEIGHT MAIN SPAN



# 1915 ÇANAKKALE SUSPENSION BRIDGE



STEEL SHAFT FABRICATION



ANCHOR FRAME FABRICATION



TOWER BLOCK FORMATION & TRIAL ASSEMBLY



STEEL SHAFT & TOWER BLOCK TRANSPORTATION





# 1915 ÇANAKKALE SUSPENSION BRIDGE



3D MODEL



GIRDER BLOCK FORMATION



GIRDER BLOCK TRIAL ASSEMBLY



GIRDER BLOCK TRANSPORTATION



# QIDDIYA SPEED PARK BLADE PROJECT



3D MODEL



FABRICATION



COMPLEX NODE STRUCTURE



TRANSPORTATION



- JACKET
- STINGER
- BOAT LANDING
- CONDUCTOR
- DRIVEN / DRILLED PILES
- RISERS

# OFFSHORE STRUCTURES



JACKETS 3D MODEL



JACKETS FABRICATION



JACKET LOAD-OUT



JACKET OFFSHORE INSTALLATION



- RIGID SPOOL
- SUCTION PILES
- SUCTION ANCHOR
- MANIFOLD
- SLIDING FRAME
- INSTALLATION AIDS

# SUBSEA STRUCTURES



RIGID SPOOL FABRICATION



INSTALLATION AIDS TRANSPORTATION



RIGID SPOOL SHIPMENT



INSTALLATION AIDS TRANSPORTATION



- RIGID SPOOL
- SUCTION ANCHOR
- SLIDING FRAME
- SUCTION PILES
- MANIFOLD
- INSTALL AT ION AIDS

# SUBSEA STRUCTURES



MANIFOLD HEADER INSTALLATION



SUCTION PILE VERTICALITY TEST



MANIFOLD TRANSPORTATION

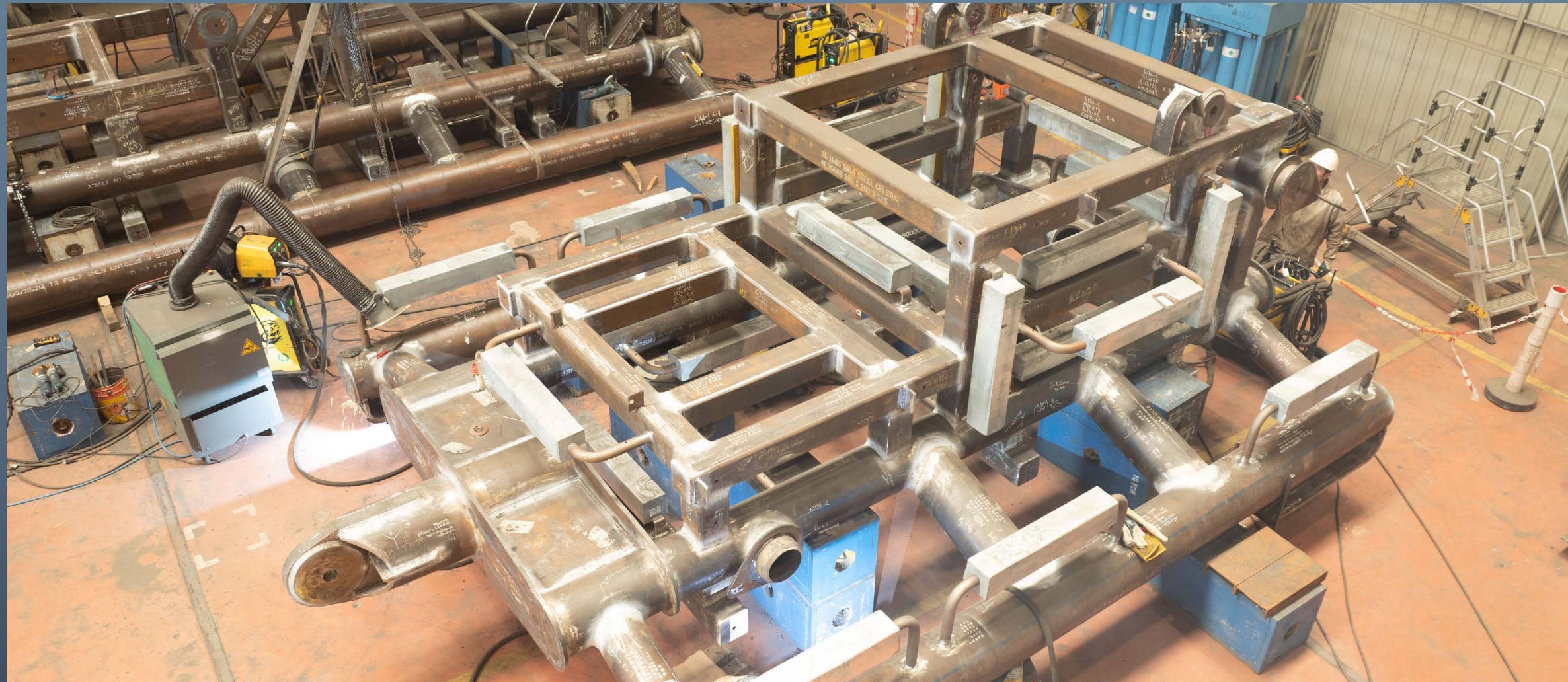


MANIFOLD & SUCTION PILE SHIPMENT



- RIGID SPOOL
- SUCTION PILES
- SUCTION ANCHOR
- MANIFOLD
- SLIDING FRAME
- INSTALL AT ION AIDS

# SUBSEA STRUCTURES



PLET - SLIDING FRAME FABRICATION



PLET - SLIDING FRAME HANDLING



PLET - SLIDING FRAME TESTING



PLET - SLIDING FRAME LOAD-OUT



- RIGID SPOOL
- SUCTION PILES
- SUCTION ANCHOR
- MANIFOLD
- SLIDING FRAME
- INSTALL AT ION AIDS

# SUBSEA STRUCTURES



SUCTION ANCHOR SIT



SUCTION ANCHOR HANDLING



SUCTION ANCHOR STORAGE



SUCTION ANCHOR SHIPMENT



- ENGINEERING
- FABRICATION
- TRIAL ASSEMBLY
- COATING
- PROCUREMENT
- E&I WORKS
- INSULATION
- SHIPMENT

# MODULARIZATION



MODULARIZATION WORKS



MODULE TRIAL ASSEMBLY



MODULE TRANSPORTATION



MODULE LOAD-OUT



1,200 SECTION/YEAR 70,000 TONS/YEAR



COLD PLATE ROLLING & PRECISE MACHINING & AUTOMATED WELDING

# STEEL WIND TOWERS



PAINTING & INTERNALS ASSEMBLY



SECTION 45 m Length



TRANSPORTATION 11 Countries



- POWERSHIPS
- SPECIAL SERVICE VESSELS
- BARGES
- TANKERS

# POWERSHIPS & SHIPBUILDINGS



POWERSHIP



POWERSHIP



TANKER



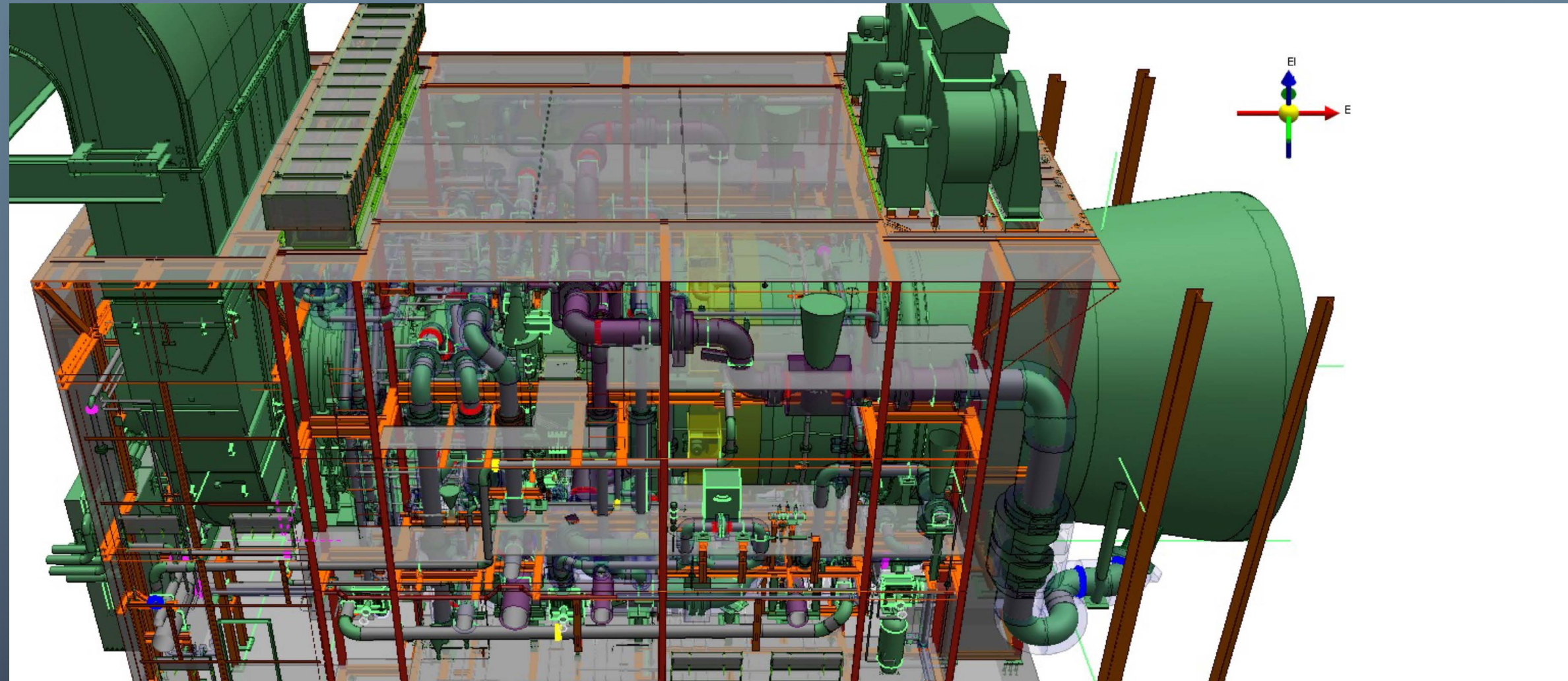
DYNAMIC POSITIONING SERVICE VESSEL



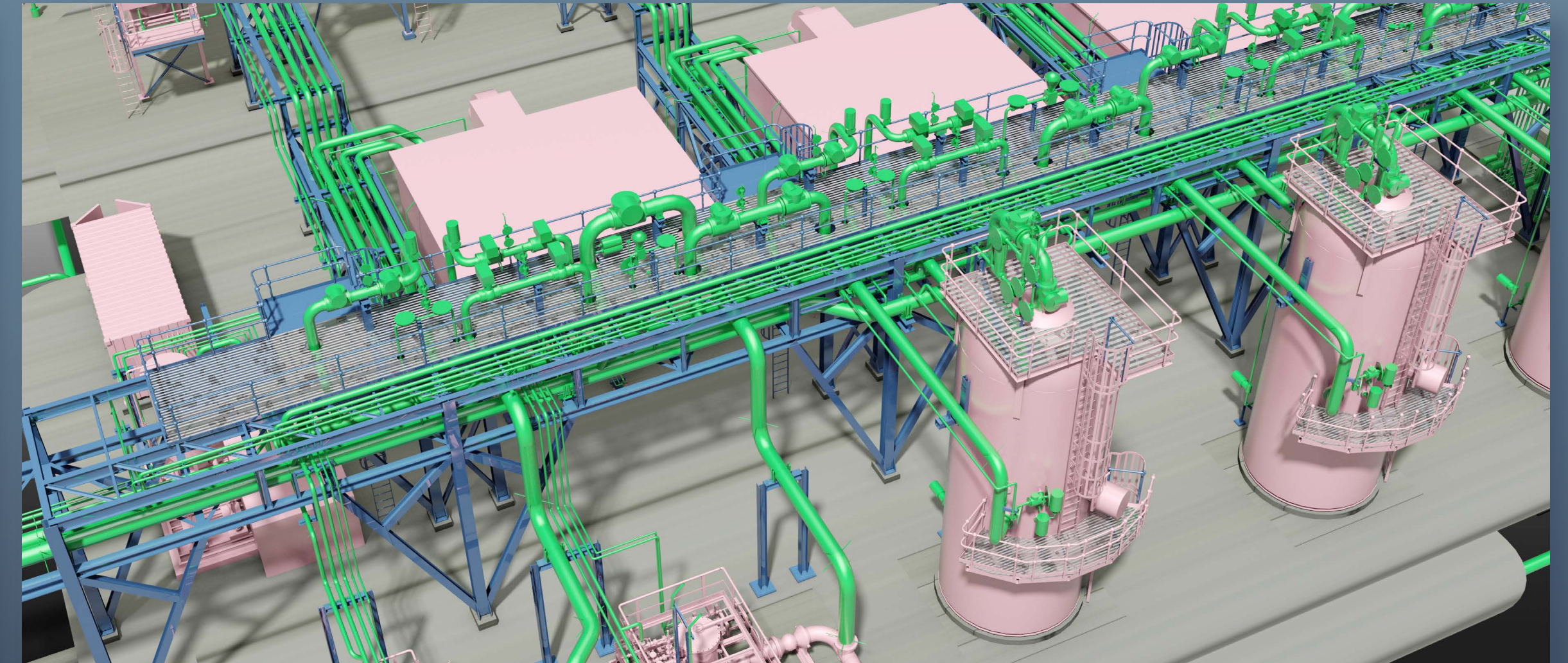
- PLANT & PIPING DESIGN
- MECHANICAL DESIGN & FEA ANALYSIS
- PRESSURE VESSEL DESIGN

- ELECTRICAL & INSTRUMENT DESIGN
- 3D MODELLING for all DISCIPLINES
- CIVIL, STRUCTURAL & MODULAR DESIGN

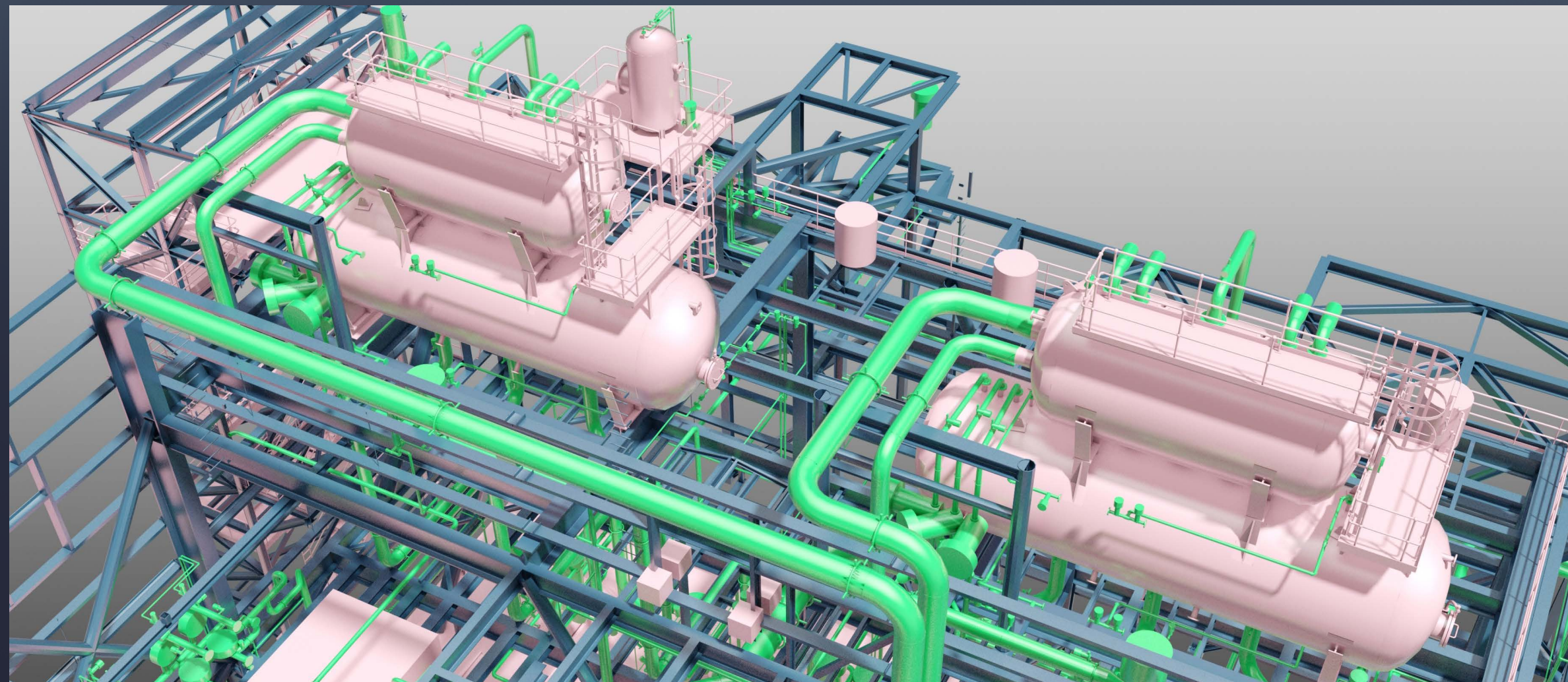
# ENGINEERING



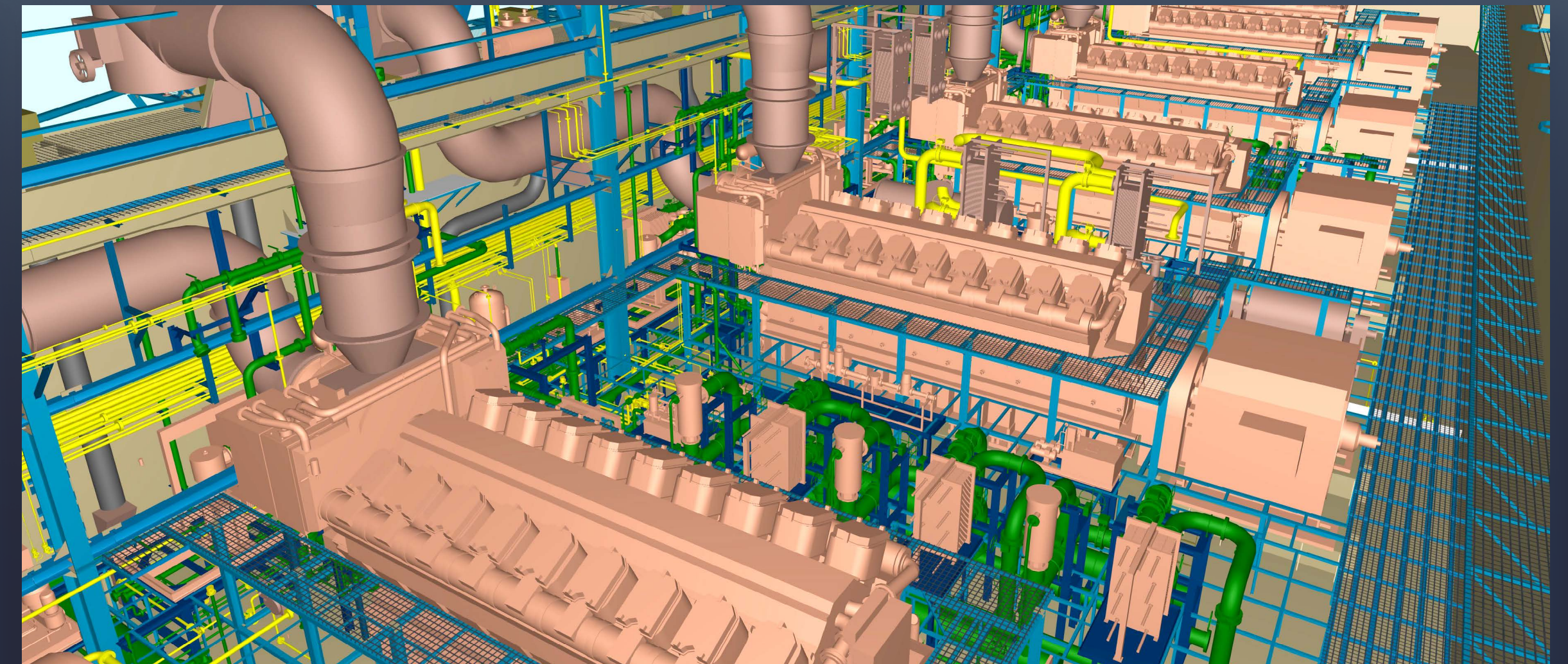
MHI GAS TURBINE MODULAR ENCLOSURE



WEST QURNA-2 OILFIELD



BAZYAN CCPP



KPS-6 POWERSHIP



# OPERATIONS



CNC PLATE BENDING



5-AXIS CNC MACHINING



ROBOTIC - AUTOMATED - MANUAL WELDING



CNC PROFILE CUTTING - DRILLING



# OPERATIONS



CNC CUTTING - WELDING



COLD PLATE ROLLING



CNC CUTTING - WELDING



BLASTING - PAINTING



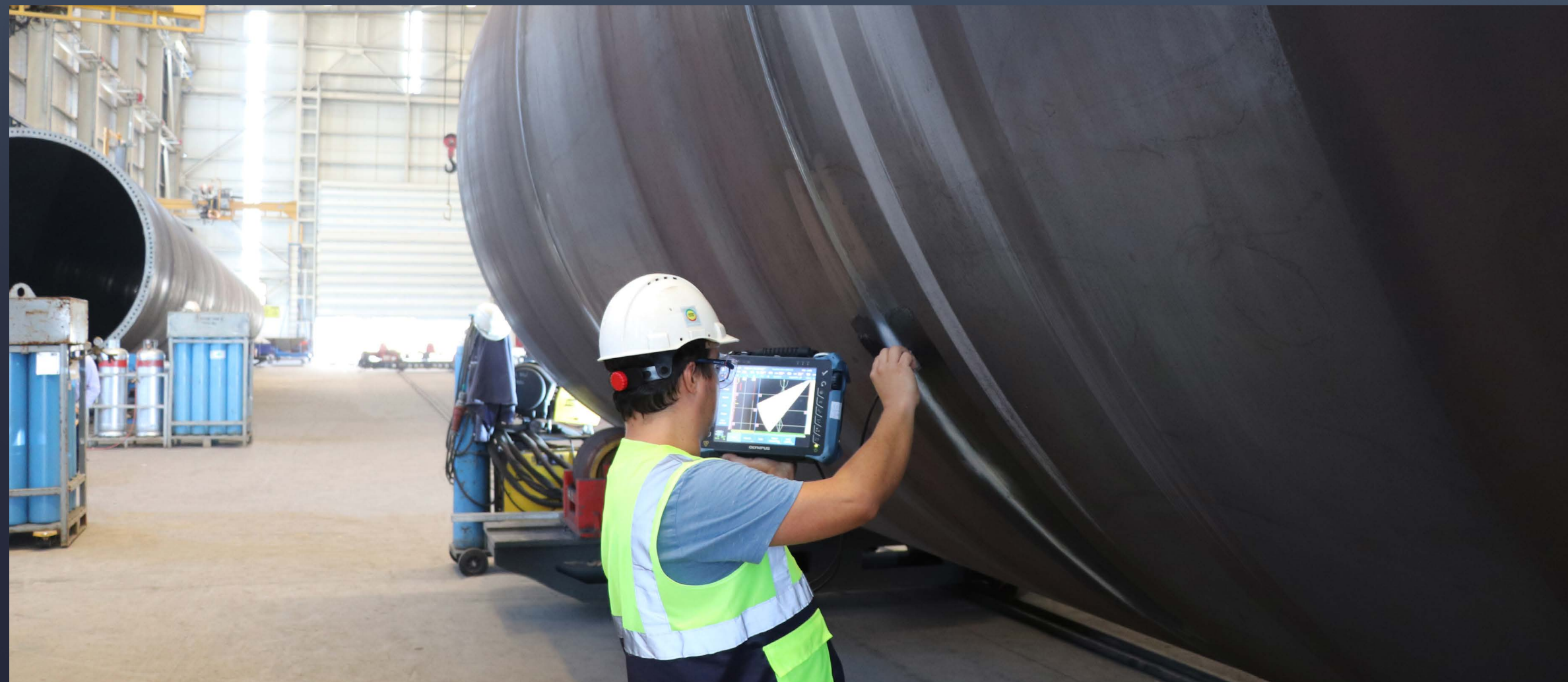
# OPERATIONS



CERTIFIED QUALITY MANAGEMENT SYSTEMS



INDEPENDENT QA&QC ORGANIZATION



IN-HOUSE CERTIFIED NDE PERSONNEL



PRECISION in QUALITY CONTROL



# LOGISTICS



DIRECT SEA ACCESS



3 INTERNATIONAL DEEP SEA PORTS



HEAVY LIFTING OPERATIONS



IN-HOUSE LOGISTICS ORGANIZATION



# ACCESS MAP





# GROUP COMPANIES



## cintas | steel

Fenced Area : 160,000 m<sup>2</sup>  
Covered Area : 62,000 m<sup>2</sup>  
Number of Employees : 2,000  
Annual Fab. Capacity : 80,000 t



## cintas | pipe

Fenced Area : 120,000 m<sup>2</sup>  
Covered Area : 75,000 m<sup>2</sup>  
Number of Employees : 1,000  
Annual Spool Fab. Capacity : 50,000 t  
Pipe-Fitting Manufacturing : 106,000 t  
Annual Fittings Capacity : 6.000 t  
Annual LSAW Process Pipe Capacity : 50.000 t  
Annual LSAW Line Pipe Capacity : 100.000 t



## cintas | ningbo

Fenced Area : 56,000 m<sup>2</sup>  
Covered Area : 32,000 m<sup>2</sup>  
Number of Employees : 650  
Annual Fab. Capacity : 20,000 t



## cintas | machining

Fenced Area : 13,000 m<sup>2</sup>  
Covered Area : 12,000 m<sup>2</sup>  
Number of Employees : 500



# SUSTAINABILITY

Çimtaş, along with the efforts to attain its wide-range social and economic sustainability goals, is striving to reduce its environmental footprint with all solar-powered facilities, paperless processes and responsible water & waste management approach; and by caring for an olive yard with a tree for each of its employees, a special olive kind awarded with protected designation of origin (PDO) status by the European Union at region where Çimtaş's core facilities are located.





www.cimtas.com

www.cimtas.com